

A vintage travel poster illustration. The central focus is a large, white, high-wing seaplane with two propellers, floating on a blue body of water. The plane has a red stripe along its side and several small windows. In the foreground, a small wooden boat with a person is near the plane. To the right, a small village with red-roofed houses is visible on the water's edge. The background features towering, rugged mountains with patches of snow and a sky filled with white birds. The overall style is reminiscent of early 20th-century travel posters.

Sotheran's  
LONDON

**VINTAGE TRAVEL POSTERS 2019**

# VINTAGE TRAVEL POSTERS 2019

Sotheran's are delighted to bring you the thirteenth Annual Vintage Travel Posters exhibition.

Once again we have a large collection of British posters to choose from (items 1-29). There are many which we have not seen examples of before including a lovely poster of the English Lakes (item 1) showing portraits of Shelly, Southey, Ruskin, Coleridge, Walpole & Wordsworth).

There is a very attractive poster for Northern Ireland showing a couple enjoying a walk in beautiful surroundings (item 16).

My favourite poster in the exhibition is the one of the flying boat published by DNL (item 30). There weren't many of this type of aircraft in the fleet and it must have been a very impressive sight for the locals to see in 1940 Norway.

We have some fantastic posters from the South of France (items 34-38). I have been looking for an example of the rare poster showing Juan-les-Pins (item 35) for many years.

All the Swiss posters (items 61-66) are ones we have not had before. I particularly like the poster showing the yellow post bus (item 65) which although updated are still very much in use today.

There are some wonderful posters of Hong Kong & Macau (items 92-95).

The last poster in the exhibition catalogue shows the Speedbird design (item 101) which was originally commissioned by Imperial Airways and remains the call sign for British Airways.

The Private View will be held on Wednesday 6th November in the print department. We do hope some of you will be able to attend. RSVP details at back of catalogue. The exhibition will also be on view from 7th November to 28th November 2019.

These posters continue to evoke memories of the golden age of travel and you can see why they were so effective as tools for promoting tourist destinations.

Sotheran's

EST. LONDON 1761

HENRY SOTHERAN LTD

2 Sackville Street

Piccadilly

London W1S 3DP

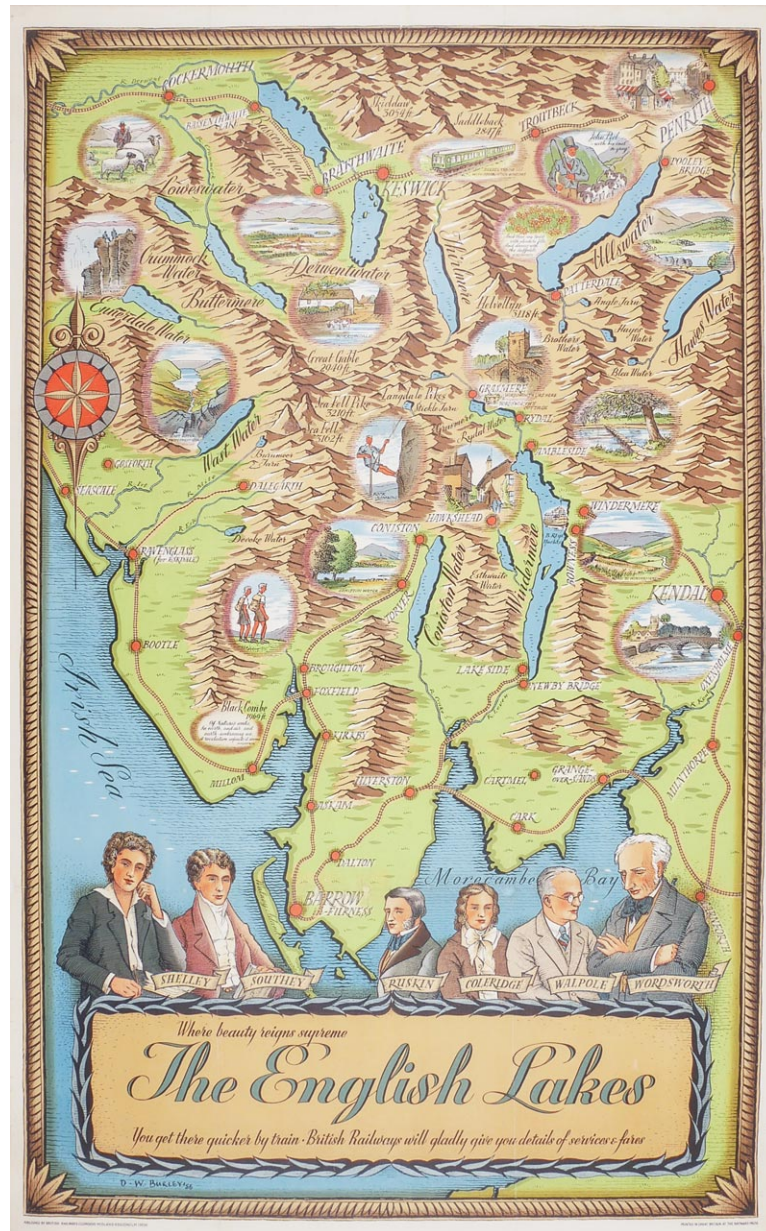
tel: 020 7439 6151

email: [prints@sotherans.co.uk](mailto:prints@sotherans.co.uk)

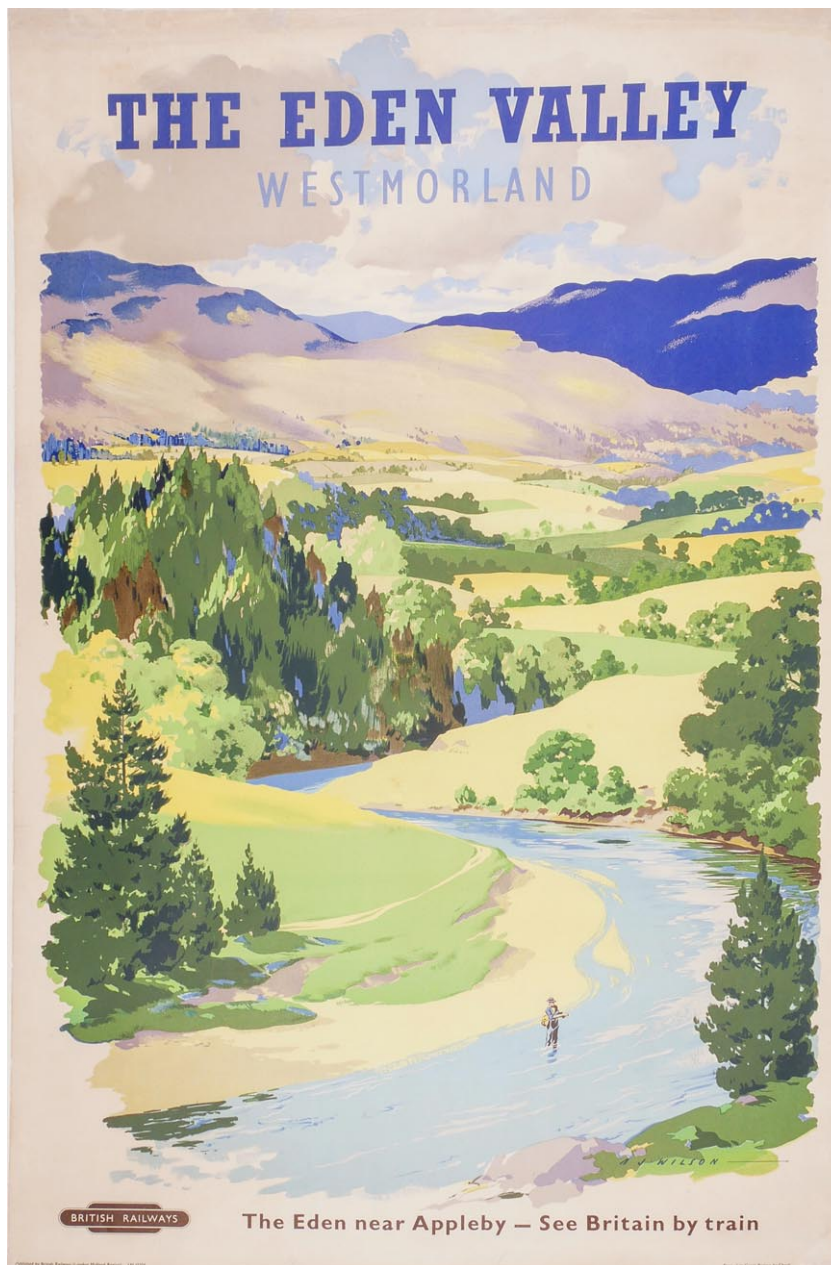
web: [sotherans.co.uk](http://sotherans.co.uk)







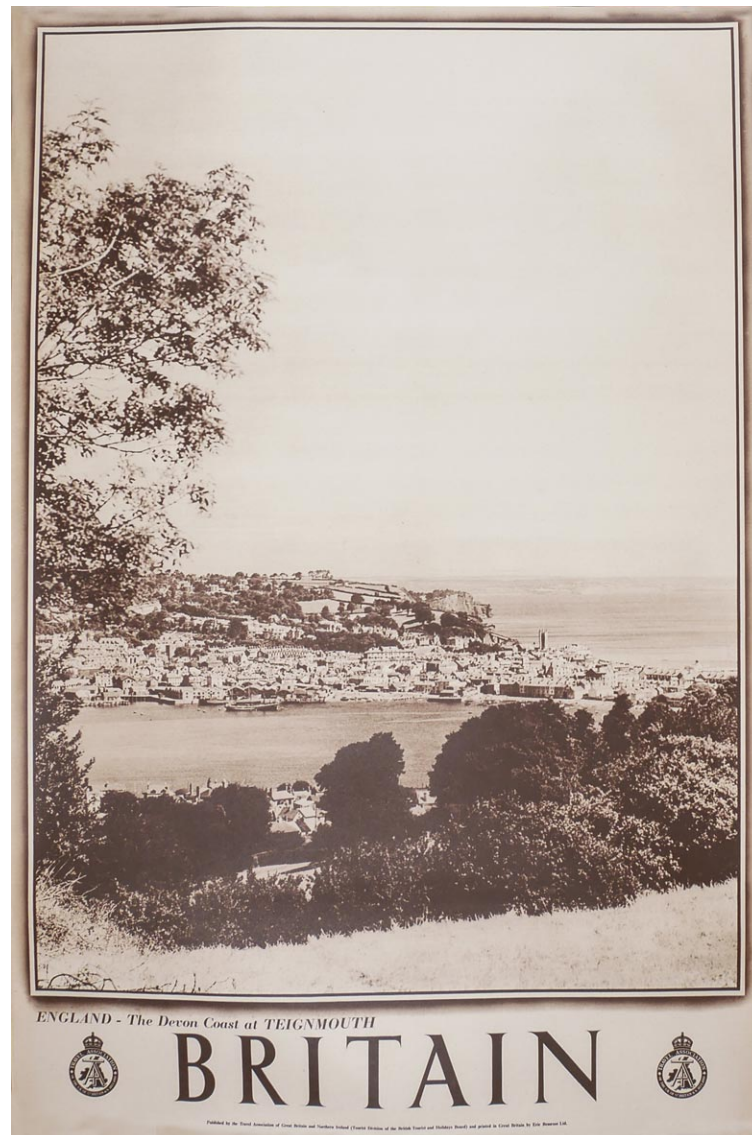
1. BURLEY, D.W. The English Lakes. Original lithograph with colour, linen backed, published by British Railways, printed in Great Britain at the Baynard Press, 1956. 1015 x 635 mm. £1,250  
 Showing portraits of Shelley, Southey, Ruskin, Coleridge, Walpole & Wordsworth.  
 Tear to upper middle.



2. WILSON, A.J. The Eden Valley, Westmoreland. Original lithograph with colour, linen backed, published by British Railways, c.1950. 1015 x 630 mm. £795

Some creases, folds & tears which are mainly confined to edges.





3. ANON. England - The Devon Coast at Teignmouth. Original lithograph printed in Great Britain for the Travel Association of the United Kingdom of Great Britain and Northern Ireland, by Eric Bemrose Ltd, c.1950. 760 x 510 mm. £125



4. DIXON-SCOTT, J. Ilfracombe - On Glorious Devon's Ocean Coast. Original lithograph printed in Great Britain for the Travel Association of the United Kingdom of Great Britain and Northern Ireland, by Clarke & Sherwell Limited, c.1950. 760 x 510 mm. £125





5. DOONE, Val. London - The Tower. Original lithograph printed in Great Britain for the Travel Association of the United Kingdom of Great Britain and Northern Ireland, by Hazell, Watson & Viney, c.1950. 760 x 510 mm. £125

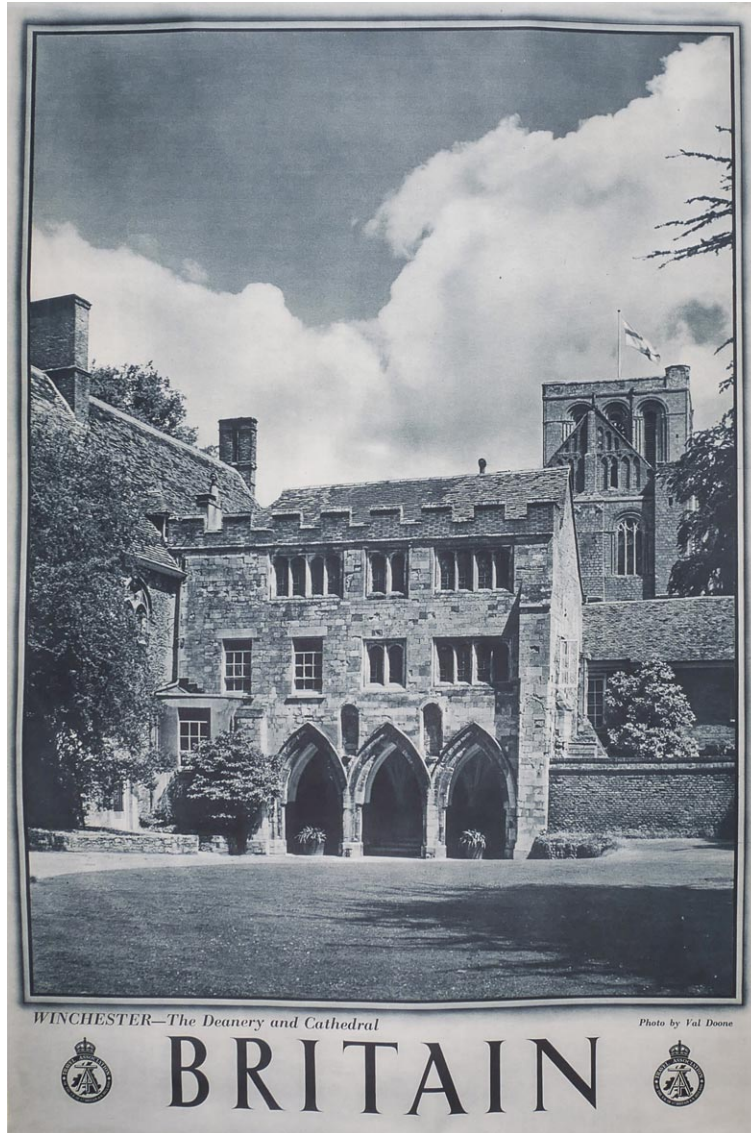


6. MASSEAU, Pierre Felix (1905-1994). [Victoria Station London]. Venice Simplon Orient Express. Original lithograph with colour as printed by Imprimerie Bauge, first edition, France, 1981. 985 x 620 mm. £395





7. CARTER, Zenas. Leamington Spa - The Parade. Original lithograph printed in Great Britain for the Travel Association of the United Kingdom of Great Britain and Northern Ireland, by Rembrandt Photogravure Limited, Watford, c.1950. 760 x 510 mm. £95



8. DOONE, Val. Winchester - The Deanery and Cathedral. Original lithograph printed in Great Britain for the Travel Association of the United Kingdom of Great Britain and Northern Ireland, by Harrison & Sons Limited, c.1950. 760 x 510 mm. £95



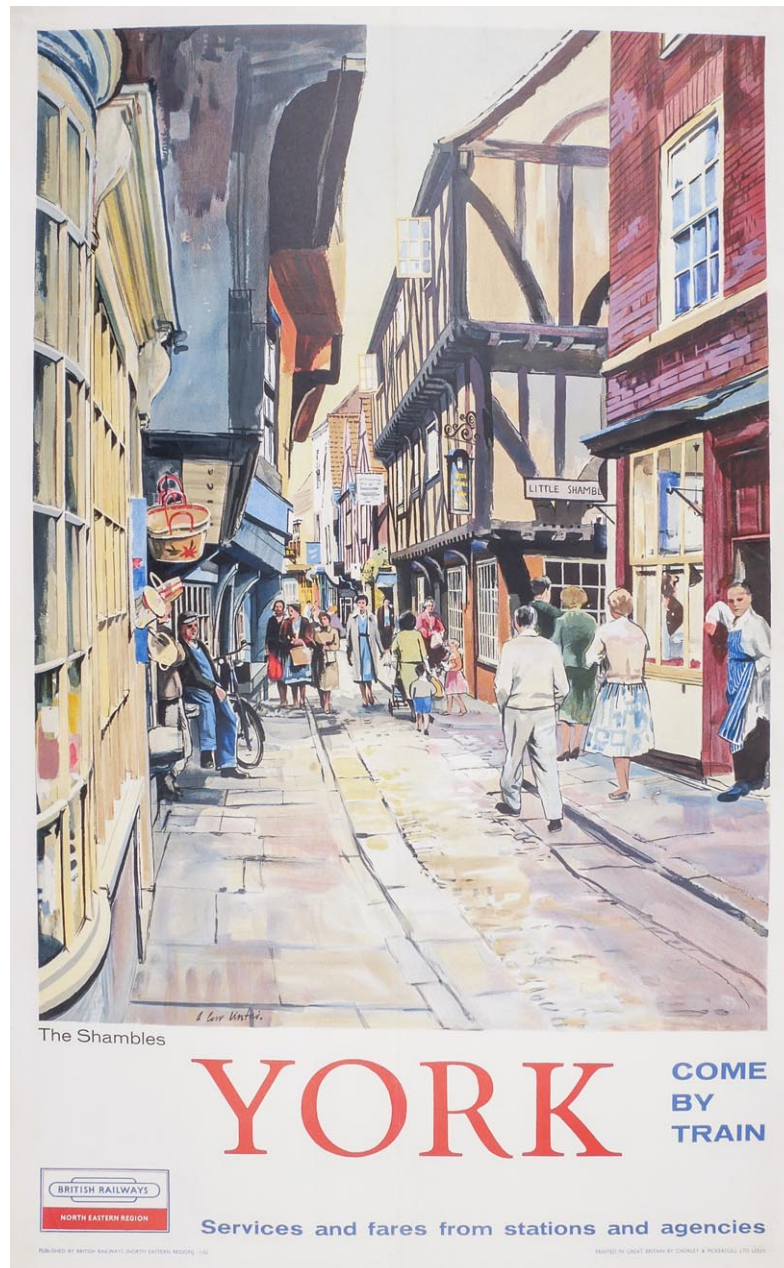


9. CRIBB, S. H.M.S. Victory, Southsea and Portsmouth, Britain. Original lithograph printed in Great Britain for the Travel Association of the United Kingdom of Great Britain and Northern Ireland, by Clarke & Sherwell Limited, c.1950. 760 x 510 mm. £95



10. DOONE, Val. Southend - on - Sea - Public Gardens. Original lithograph printed in Great Britain for the Travel Association of the United Kingdom of Great Britain and Northern Ireland, by Rembrandt Photogravure Limited, Watford, c.1950. 760 x 510 mm. £95





11. LINFORD, Alan Carr. The Shambles, York, Come by Train. Original lithograph with colour, linen backed, published by British Railways, printed in Great Britain by Chorley & Pickersgill Ltd, Leeds, 1962. 1010 x 630 mm. £750

Has been folded, with some creases & minor tears not detracting from overall look which is good.



12. STEVENS, Harry. Hire a Coach, For Party Travel, Anywhere in Britain. Original lithograph with colour, linen backed, published for Lincolnshire Road Car Co., Ltd, c.1960. 205 x 650 mm. £150





13. ANON. Britain, Land of History. Original lithograph with colour, linen backed, published by the British Travel and holidays association and printed in Great Britain by Harrison and Sons Ltd, 1962. 1015 x 645 mm. £425



14. ANON. Northern Ireland - Round Tower and Abbey, Devenish Island, Lough Erne. Original lithograph printed in Great Britain for the Travel Association of the United Kingdom of Great Britain and Northern Ireland, by Jarrold & Sons, Limited, c.1950. 760 x 510 mm. £95





15. UNGER, Hans. Britain, Northern Ireland - Land of Legend. Original lithograph with colour, linen backed, published by British Travel and printed in Great Britain, c.1970. 1010 x 640 mm. £425

# COME TO ULSTER



**Y. H. A. OF NORTHERN IRELAND**  
HOSTELS IN  
**MOUNTAINS OF MOURNE, ANTRIM COAST AND SPERRIN MOUNTAINS**  
Full Particulars and Handbook (7d. post free) from the Youth Hostel  
Association (N.I.), 31a, Wellington Place, Belfast  
INFORMATION REGARDING ULSTER AND FREE ILLUSTRATED GUIDE CAN BE HAD ON APPLICATION TO THE  
**ULSTER TOURIST DEVELOPMENT ASSOCIATION LTD., DEPT. 3, 6 ROYAL AVENUE, BELFAST**

16. ANON. Come to Ulster. Original lithograph with colour, linen backed, printed by S.C. Allen & Company Ltd, Belfast & Ireland, c.1935. 1010 x 620 mm. £2,450

Slieve Donard mountain, County Down is in the distance.





17. TILL, Walter (1880-1930). See Ireland first. Original lithograph with colour, printed by Hely's Limited. Colour Printers, Dublin, published by the Irish Tourist Association, c.1920. 1020 x 640 mm. £2,150

A vintage railway poster for the 'Starlight Special' service. The top half features a stylized, abstract illustration of a starburst or sunburst in yellow and white against a dark blue background. The text 'Starlight Special' is written in a bold, white, sans-serif font across the middle. Below this, the route 'Glasgow Edinburgh-London' is printed in a bold, black, sans-serif font. The price '85/-' is prominently displayed in a large, red, sans-serif font, followed by 'Return incl. reserved seats' in a smaller, red, sans-serif font. The dates 'Friday 15 April & Fridays 20 May to 9 September' are listed in a black, sans-serif font. A list of five benefits, each preceded by a blue star icon, includes 'BOOK IN ADVANCE', 'STAY 8 OR 15 DAYS', 'EXPRESS NIGHT TRAVEL', 'CHILDREN HALF FARE', and 'BUFFET'. At the bottom, there is a small line of text: 'FULL DETAILS FROM STATIONS AND RAILWAY TICKET AGENCIES'. The British Railways logo is located in the bottom right corner of the poster.

**Starlight  
Special**

**Glasgow Edinburgh-London**

**85/-** Return incl. reserved seats

*Friday 15 April & Fridays 20 May to 9 September*

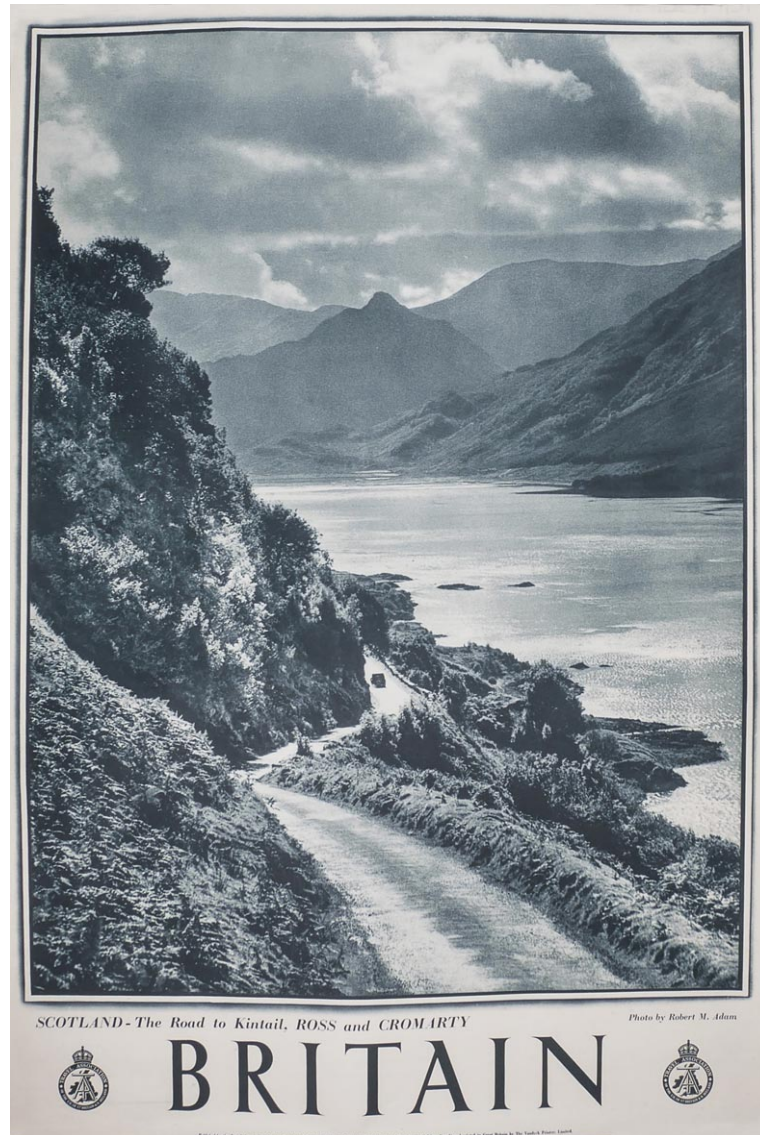
- ★ **BOOK IN ADVANCE**
- ★ **STAY 8 OR 15 DAYS**
- ★ **EXPRESS NIGHT TRAVEL**
- ★ **CHILDREN HALF FARE**
- ★ **BUFFET**

FULL DETAILS FROM STATIONS AND  
RAILWAY TICKET AGENCIES

BRITISH RAILWAYS

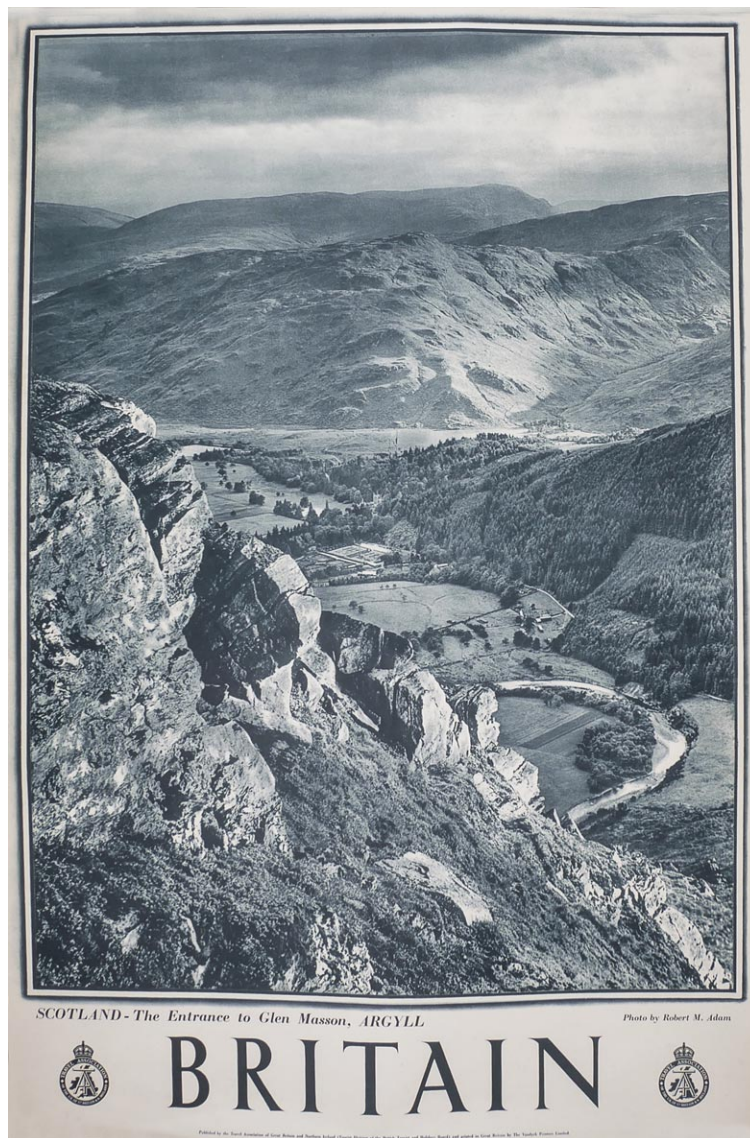
18. UNGER, Hans (1915-1975). Starlight Special, Glasgow Edinburgh - London. Original lithograph with colour, linen backed, printed by Waterlow & Sons Limited, London, published by the British transport commission, c.1965. 1020 x 630 mm.

£395

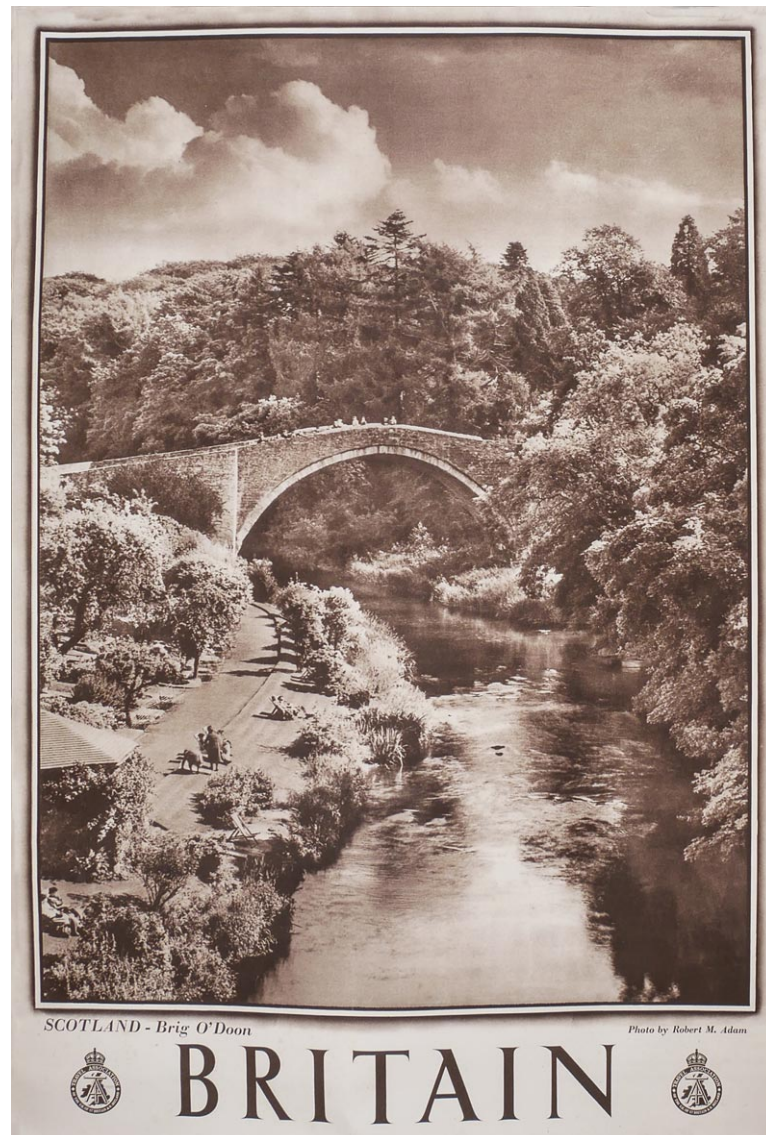


19. ADAM, Robert M. Scotland - the road to Kintail, Ross and Cromarty. Original lithograph printed in Great Britain for the Travel Association of the United Kingdom of Great Britain and Northern Ireland, by the Vandyck printers Limited, c.1950. 760 x 510 mm. £125





20. ADAM, Robert M. Scotland - The entrance to Glen Masson, Argyll. Original lithograph printed in Great Britain for the Travel Association of the United Kingdom of Great Britain and Northern Ireland, by the Vandyck Printers, Limited, c.1950. 760 x 510 mm. £125



21. ADAM, Robert M. Scotland - Brig O'Doon. Original lithograph printed in Great Britain for the Travel Association of the United Kingdom of Great Britain and Northern Ireland, by the Vandyck Printers, Limited, c.1950. 760 x 510 mm. £95





22. ADAM, Robert M. Scotland - Balmoral Castle. Original lithograph printed in Great Britain for the Travel Association of the United Kingdom of Great Britain and Northern Ireland, by Eric Bemrose Ltd, c.1950. 760 x 510 mm. £125





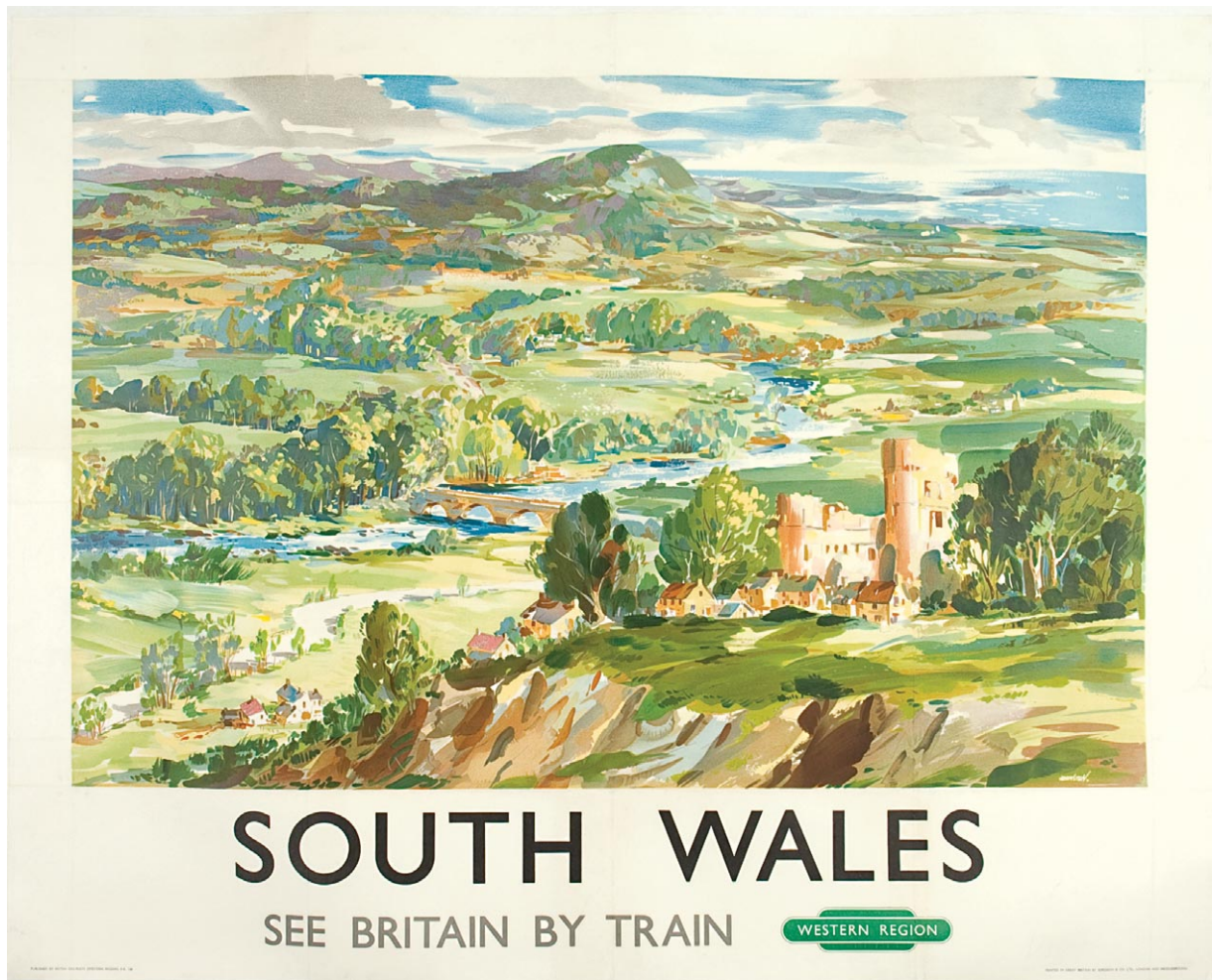
23. ANON. North Wales - The Great Orme Head, Llandudno. Original lithograph printed in Great Britain for the Travel Association of the United Kingdom of Great Britain and Northern Ireland, by the Vandyck Printers, Limited, c.1950. 760 x 510 mm. £95



24. BURLEY, D.W. North Wales, British Railways. Original lithograph with colour, linen backed, printed by Waterlow & Sons Limited, published by British Railways (London Midland Region), 1960. 1000 x 1260 mm. £1,250

With inset views of Castles: Beaumaris, Criccieth, Conway, Caernarvon, Rhuddlan, Dolwyddelan, Denbigh.





25. Johnston. South Wales. See Britain by Train. Original lithograph in colours, linen backed, published by the British Railways (Western Region), printed by Jordison and Co., London and Middlesbrough, c.1950. 1026 x 1270 mm. £1,495



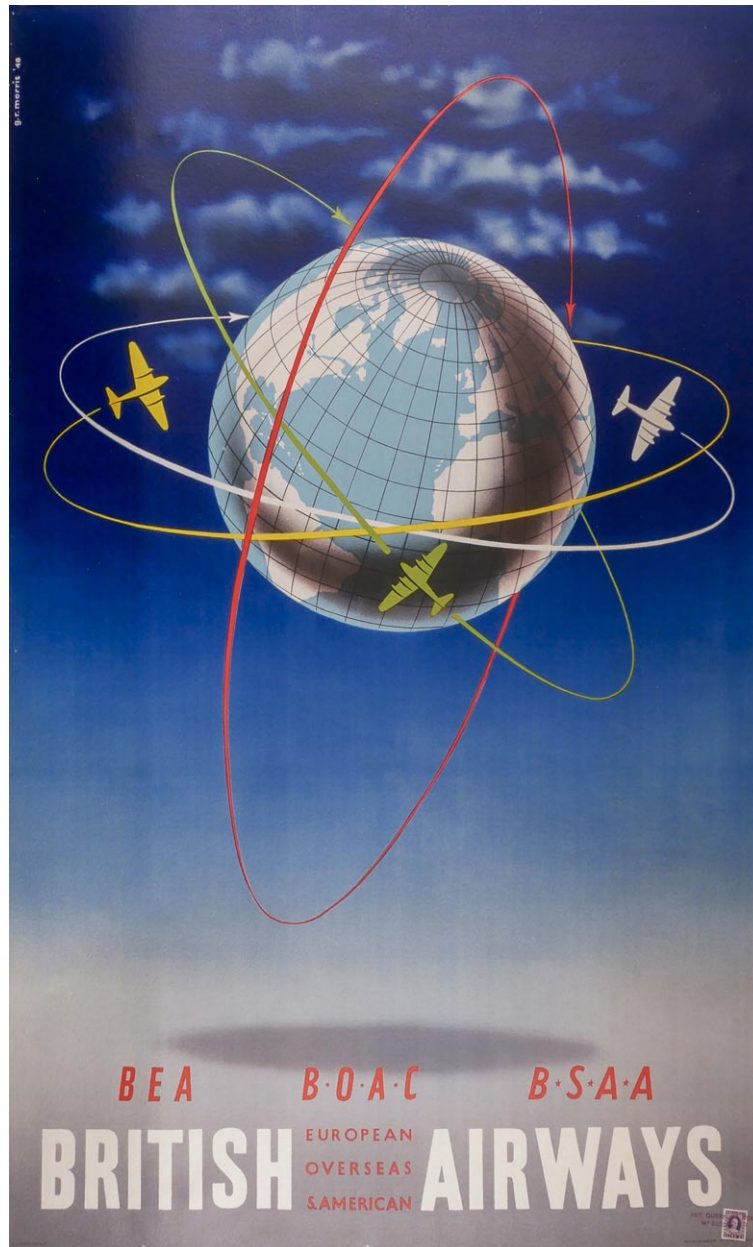


26. E. V. Hewlett. South Wales Coals the World's Best. Original lithograph with colour, published by the South Wales Trade Recovery and Expansion Committee, c.1950. 1020 x 1720 mm. £750



27. LEE-ELLIOTT, Theyre (1903-1988). British European Airways, the key to Europe. Original lithograph with colour, published by British European Airways Corporation, printed in England at the Curwen Press, 1946. 635 x 1015 mm. £950

Theyre Lee-Elliott (28th May 1903 - 24th December 1988) was an English artist who created notable Art Deco logos such as the Speedbird and painted the ballet and religious art.



28. MORRIS, G.R. British Airways - BEA BOAC BSSA - around the world. Original lithograph with colour, linen backed, published by BOAC - British Overseas Airways Corporation, printed in England, 1948. 1020 x 640 mm. £1,450

With Italian stamp in lower right corner.





29. SZOMANSKI, Wladyslaw R. (1911-1996). Merry Christmas - fly BEA in the New Year - British European Airways. Original lithograph with colour, published by BEA - British European Airways, printed by Waterlow & Sons Limited, London and Dunstable, 1958. 1010 x 630 mm. £950

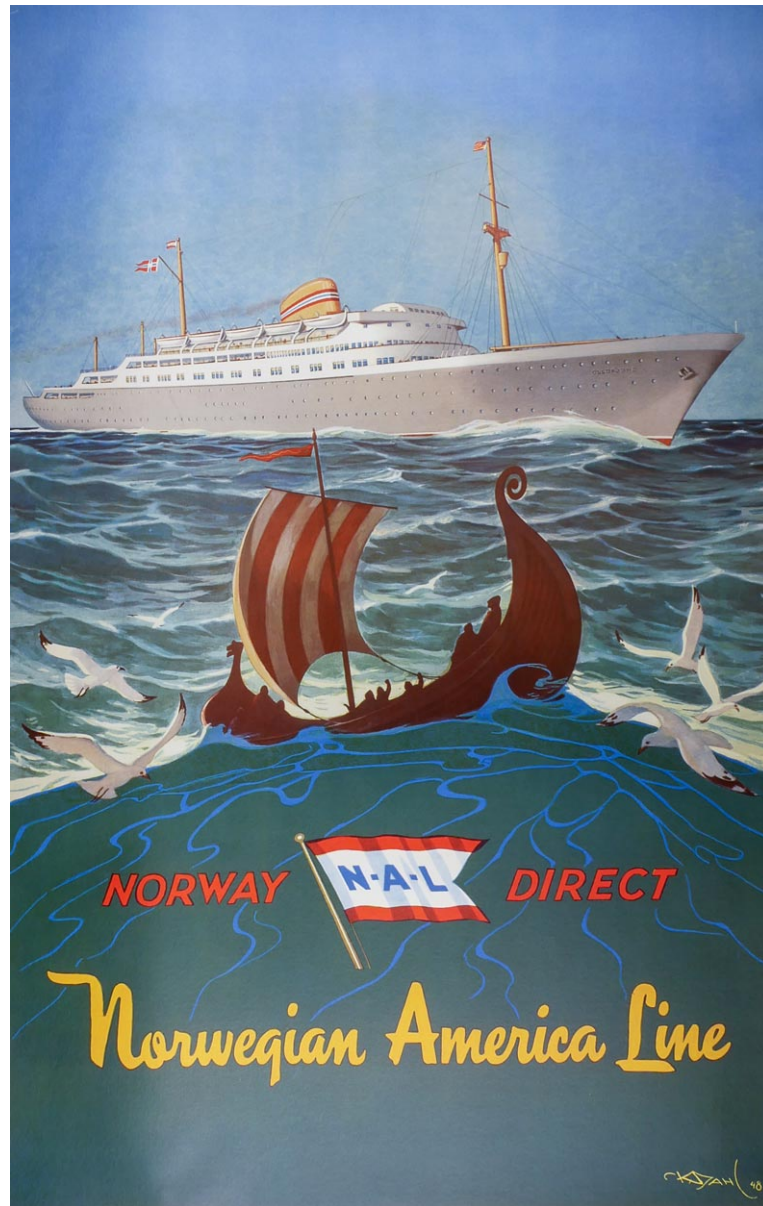


30. T.P. DNL - Norwegian Air Lines. Original lithograph with colour, linen backed, printed by Thon & Co, published by DNL - Det Norske Luftfartsselskap A/S , 1940. 1000 x 620 mm. £3,950

The poster depicts a Short Sandringham flying boat in a Norwegian fjord with a local fisherman in front of the plane and mountain peaks at the back.

Det Norske Luftfartsselskap A/S (DNL) was an airline and flag carrier of Norway. Founded in 1927, it operated domestic and international routes from 1935 to 1941 and from 1946 to 1951. It became one of the three founders of Scandinavian Airlines System (SAS).

DNL had 3 Short Sandringham aircrafts in their fleet, LN-LAK: Polarbjørn and LN-LAI: Jutulen, Some signs of foxing, otherwise in very good condition.



31. DAHL, Karl (1886-1954). Norway Direct, Norwegian America Line. Original lithograph with colour, linen backed, published by NAL, printed by Emil Moestue A/S, Norway, 1948. 1000 x 625 mm.

Depicting a Viking longship in front of MS Oslofjord.

£1,750





32. **KNUDSEN.** Norway, Voss, Snow Sun Fun. Original offset lithograph with colour, published by Norway Travel Association - Norwegian State Railways, printed by B. Pedersen & Sønn A/S, 1967. 1000 x 620 mm. £715



33. PADDEN, Percy (1885-1965). Royal Mail - Atlantis Cruises to Norway. Original lithograph with colour, linen backed, published by The Royal Mail Line Steam Packet Company, printed by The Baynard Press, c.1930. 1020 x 640 mm.

There is a Norwegian flag being flown from one of the houses so it is possible that this is for celebrating 17th May. £2,150



34. BEZOMBES, Roger. Cote D'Azur, French Railways. Original lithograph with colour, linen backed, printed in France for and by the French National Railways, c.1960. 605 x 370 mm. £425

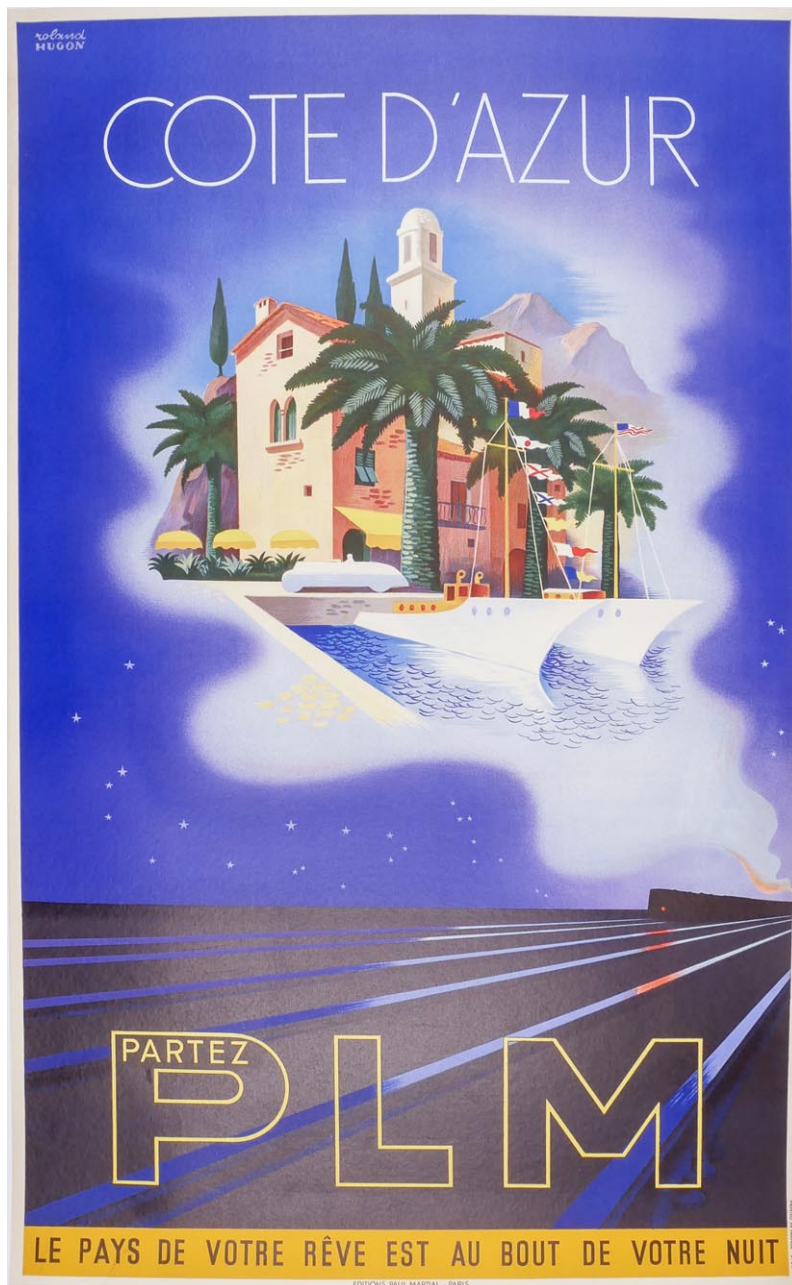




35. **BRODERS, Roger** (1883-1953). The French Riviera for Perpetual Sunshine. Original lithograph with colour, linen backed, printed by McCorquodale & Co., Ltd., London, 1930. 1020 x 635 mm.

The beach shown is Juan-Les-Pins.

£5,850



36. HUGON, Roland. Côte d'Azur, partez PLM. Original lithograph with colour, linen backed, published by PLM, printed by Paul-Martial - Paris, 1937. 1000 x 620 mm. £1,850



37. TAL. Cote D'Azur. Original lithograph with colour, linen backed, printed in France for and by French National railways, Editions Paul-Martial-Paris, 1947. 995 x 625 mm. £450

Some paper loss to lower left & tear to lower centre which has been restored during linen backing.





38. VILLENEUVE. San Salvador, pres Hyeres P.L.M, Cote D'Azur. Original lithograph with colour, linen backed, printed by G. Meunier & Cie. 221, Rue Lafayette, Paris, 1902. 1045 x 755 mm. £850



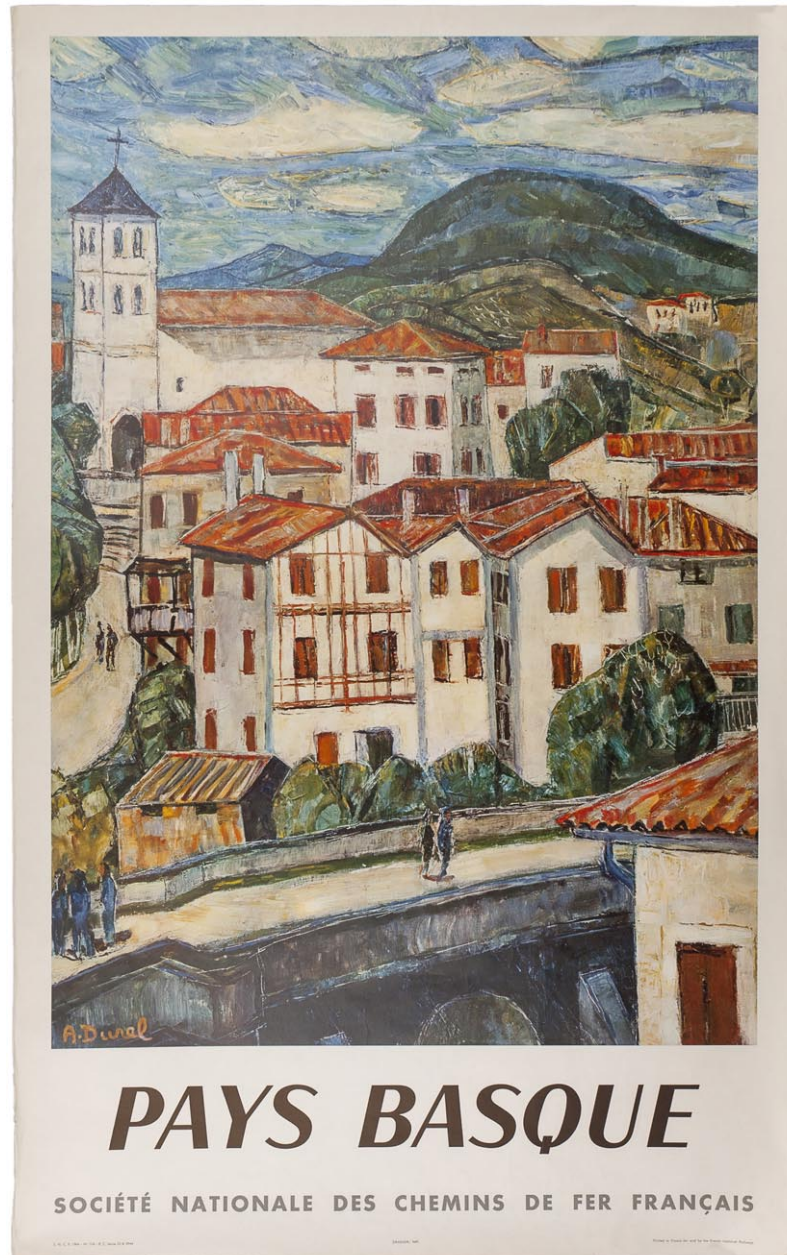
39. PADDEN, Daphne. Fly BEA, Paris. Original lithograph with colour, linen backed, printed in Great Britain by Waterlow & Sons limited, London & Dunstable, 1953. 1015 x 640 mm. £1,050



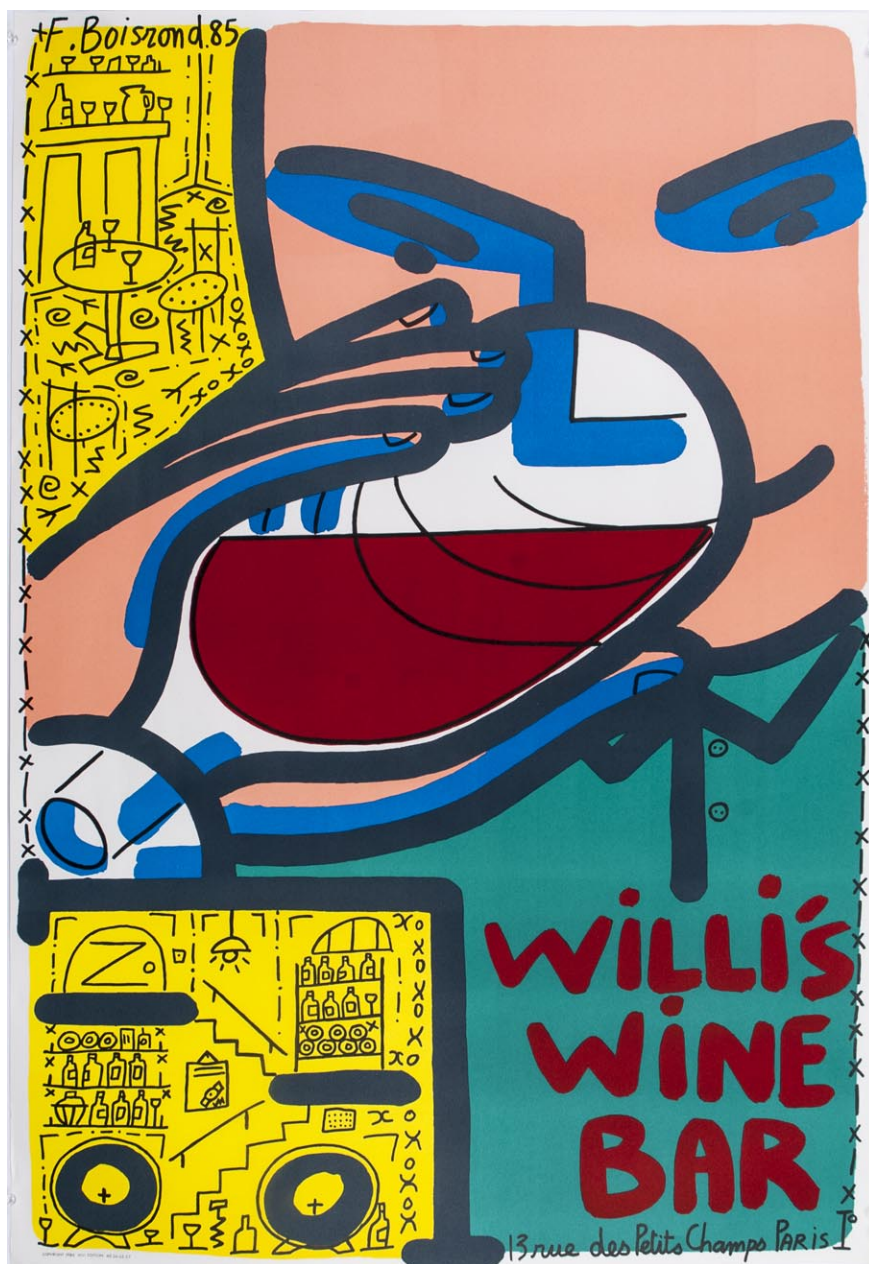


40. **BUFFET, Bernard.** Paris. Original lithograph with colour, linen backed, printed for and by the French National Railways in France, 1963. 1000 x 625 mm. £425

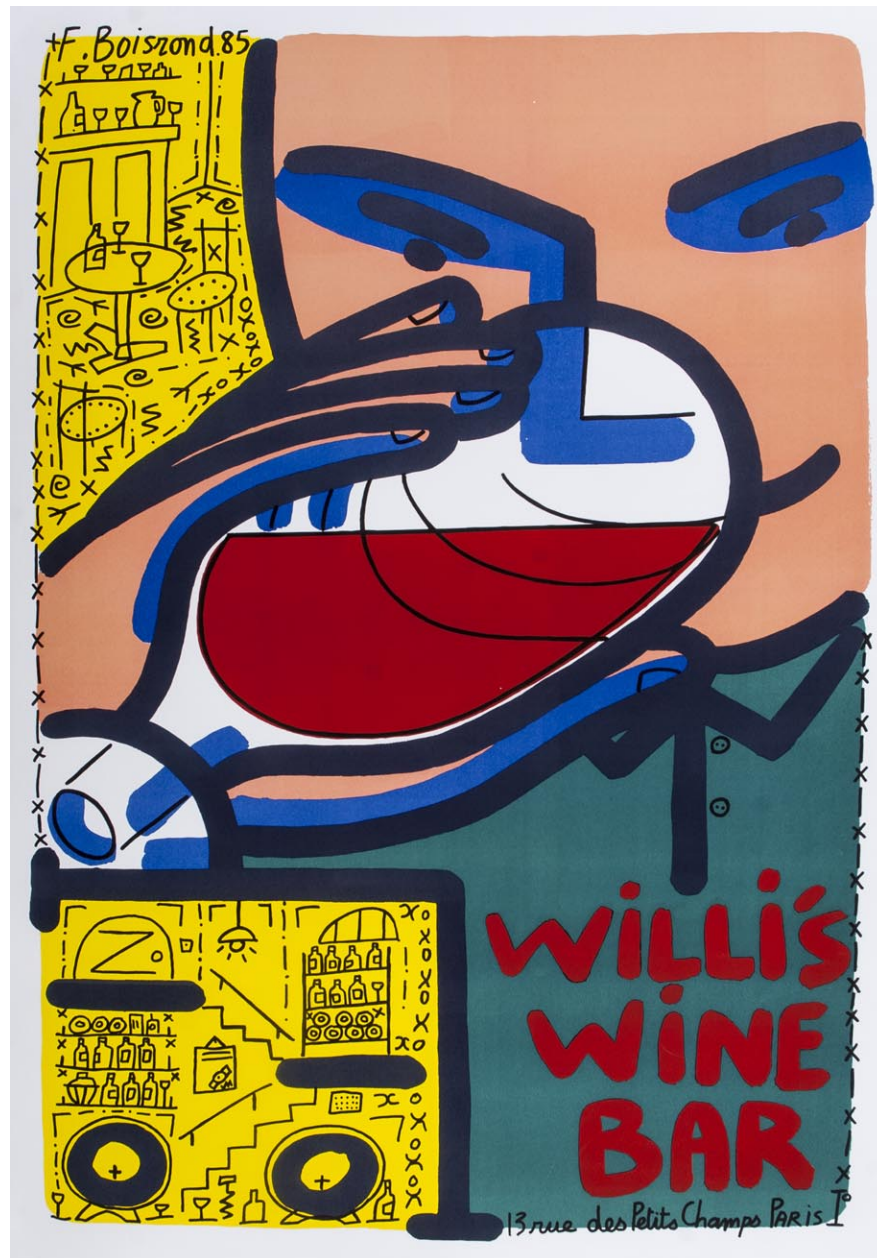




41. DUNEL, A. Pays Basque, Societe nationale des Chemins de fer Francais. Original lithograph with colour, printed in France for and by the French National Railways, published by Draeger, Imp, 1964. 995 x 615 mm. £295



42. BOISROND, F. Willi's Wine Bar, 13 rue des Petits Champs Paris. Original lithograph with colour, printed by WM. Editions, 1985. 1000 x 685 mm. £395



43. BOISROND, F. Willi's Wine Bar, 13 rue des Petits Champs Paris. Lithograph after the original with colour, printed by WM. Editions, 21st Century. 1000 x 685 mm. £150





44. DALÍ, Salvador (1904-1989). Paris. Original lithograph in colours, printed in France for the French National Railways (SNCF), 1970. 600 x 370 mm. £295



45. DALI, Salvador (1904-1989). Auvergne, French Railways. Original lithograph with colour, printed by Draeger, imp, published by S.N.C.F. (societe Nationale des Chemins de fer), 1969. 1000 x 620 mm. £195

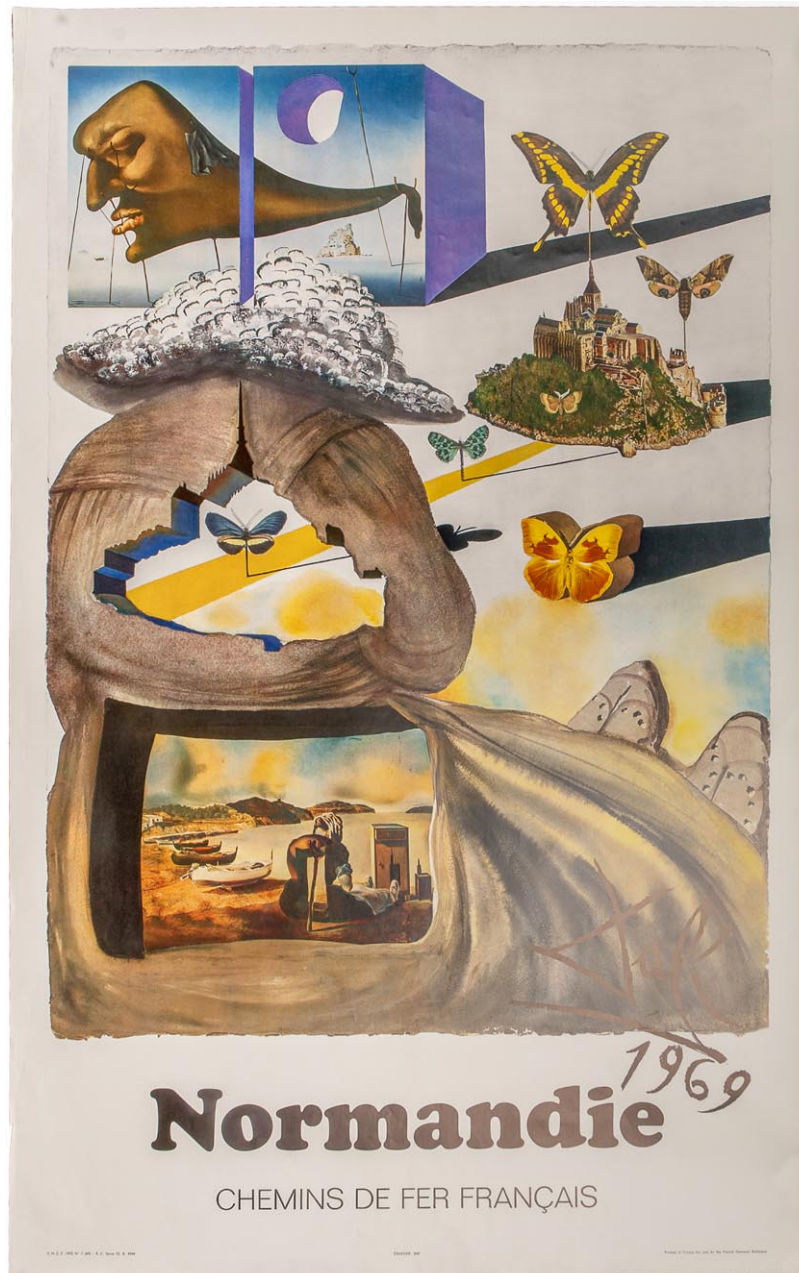
There is a small bit of paper loss to top left of poster not affecting overall look which is good.





46. DALÍ, Salvador (1904-1989). Alpes, Chemins de Fer Français. Original lithograph in colours, linen backed, printed in France for the French National Railways (SNCF), 1970. 990 x 620 mm. £495





47. DALÍ, Salvador (1904-1989). Normandie, Chemins de Fer Français. Original lithograph in colours, printed in France for the French National Railways (SNCF), 1970. 990 x 620 mm. £250

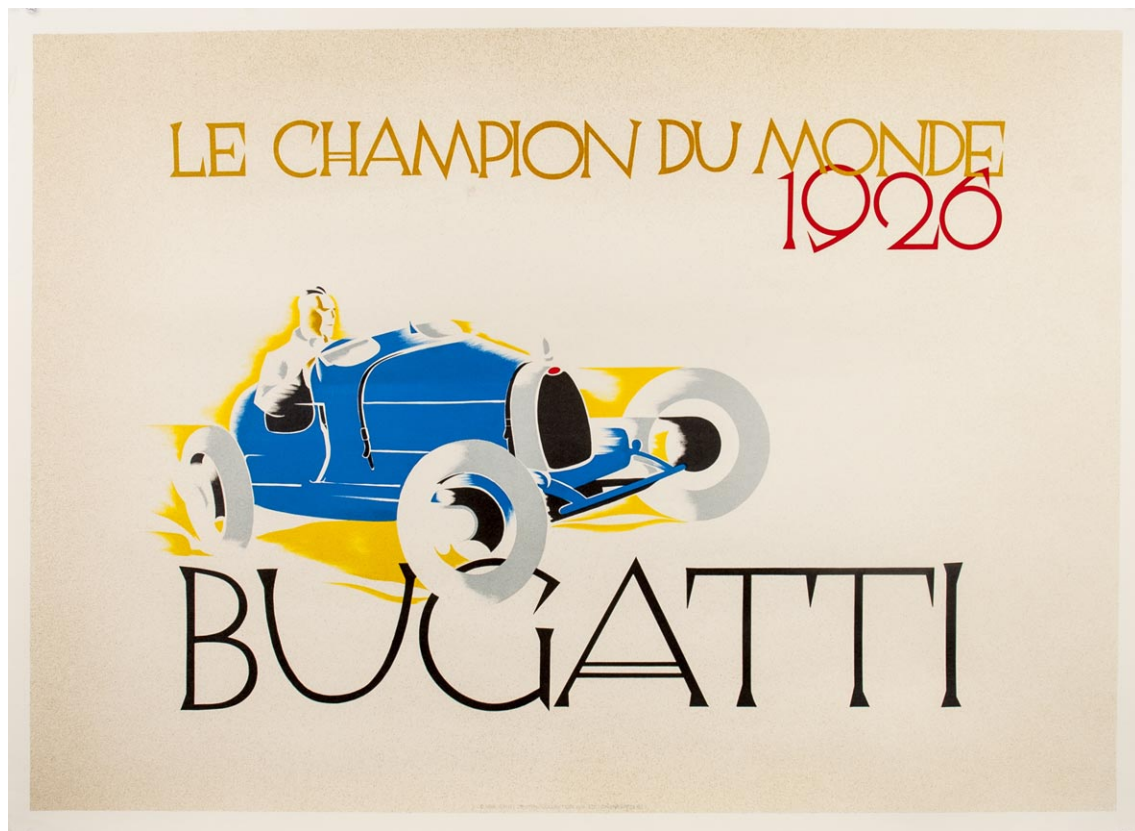


48. DALÍ, Salvador (1904-1989). Roussillon, Chemins de Fer Français. Original lithograph in colours, printed in France for the French National Railways (SNCF), 1970. 990 x 620 mm. £250

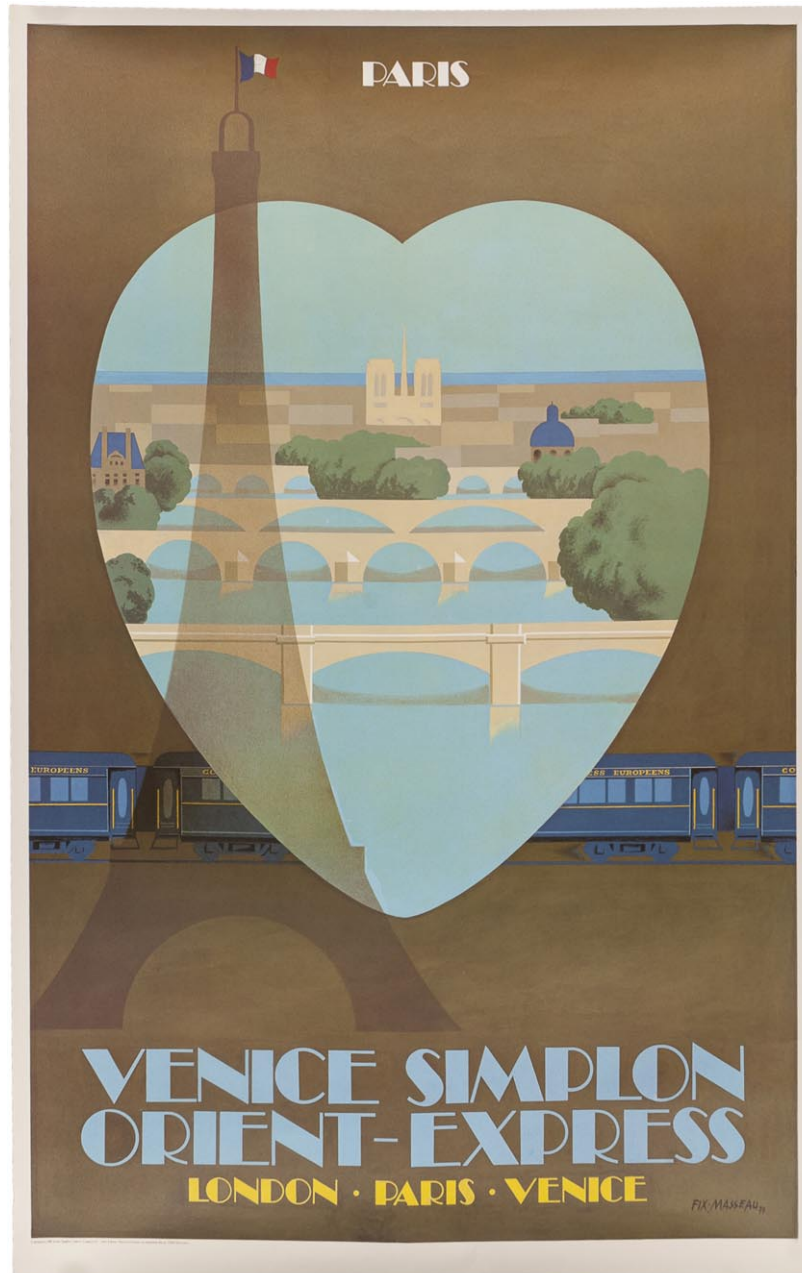


49. DALI, Salvador (1904-1989). Alsace, Chemins de Fer Francais. Original lithograph in colours, printed in France for the French National Railways (SNCF), 1970. 990 x 620 mm. £250





50. ANON. Le Champion Du Monde, 1926, Bugatti. Original lithograph with colour, printed for the Ernst Dryden collection, 1984. 680 x 940 mm. £250



51. MASSEAU, Pierre Felix (1905-1994). [Paris]. Venice Simplon Orient Express. Original lithograph with colour, printed by Imprimerie Bauge, first edition, France, 1981. 985 x 620 mm. £395



52. DIGNIMONT. Go to Paris and Visit France by Train. Original lithograph with colour, linen backed, published by Publicite Hubert Baille, Paris, printed in France for and by the French National Railways, 1962. 1020 x 630 mm. £425





53. MASSEAU, Pierre Felix (1905-1994). Exactitude, Etat. Lithograph with colour after the original dated 1932, printed in France by Bedos, Imprimeurs, Paris, published by Studios editions 59, 1982. 995 x 615 mm. £350



54. MINNE, B. Monaco 1er et 2 Juin 1952. Lithograph after the original as reproduced by the Automobile Club de Monaco, printed in Paris, 1991. 1000 x 680 mm. £150



55. ANON. XVII<sup>e</sup>. Grand Prix. Monaco 10th Mai 1959. Lithograph after the original as reproduced by the Automobile Club de Monaco, printed in Paris, 2002. 1000 x 680 mm. £150





56. ANON. Monaco 75 10/11 Mai. Lithograph after the original as reproduced by the Automobile Club de Monaco, printed in Paris, 1991. 1000 x 680 mm. £150



57. GROGNET, J. 38e Grand Prix Monaco 80 15/18 Mai. Lithograph after the original as reproduced by the Automobile Club de Monaco, printed in Paris, 1989. 1000 x 680 mm. £150

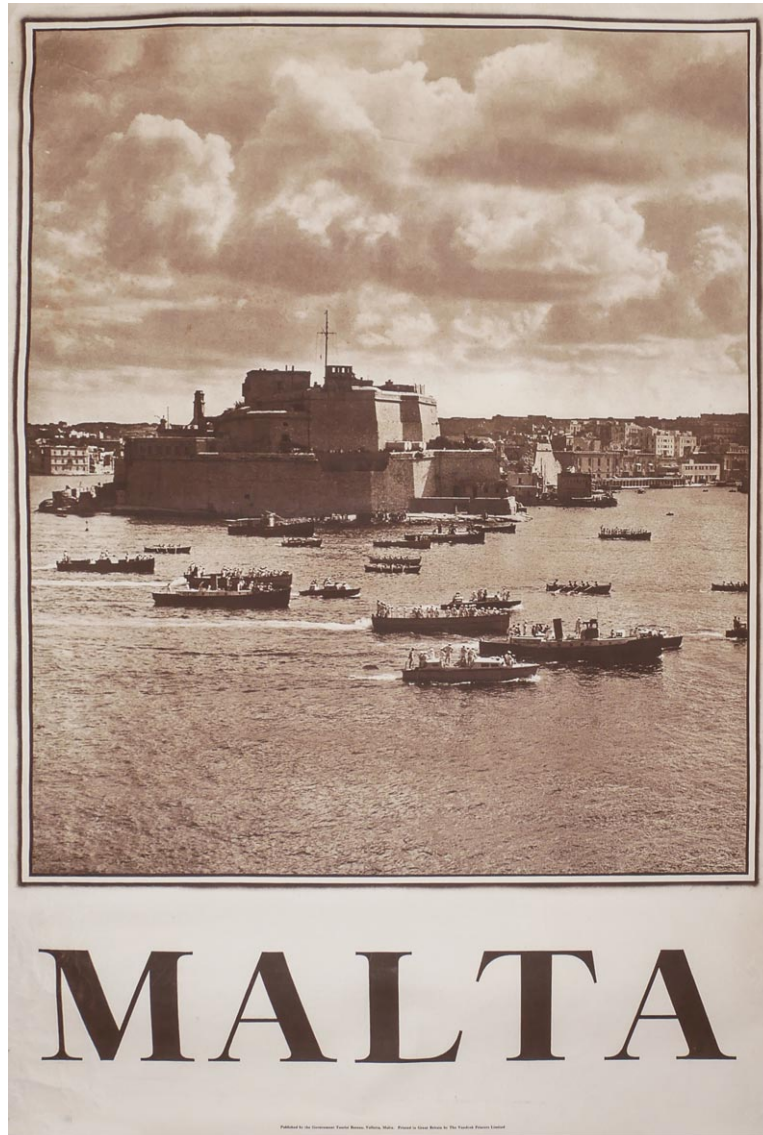


58. ANON. 40e Grand Prix Monaco 82, 20/23 Mai. Lithograph after the original as reproduced by the Automobile Club de Monaco, printed in Paris, 1991. 1000 x 680 mm. £150

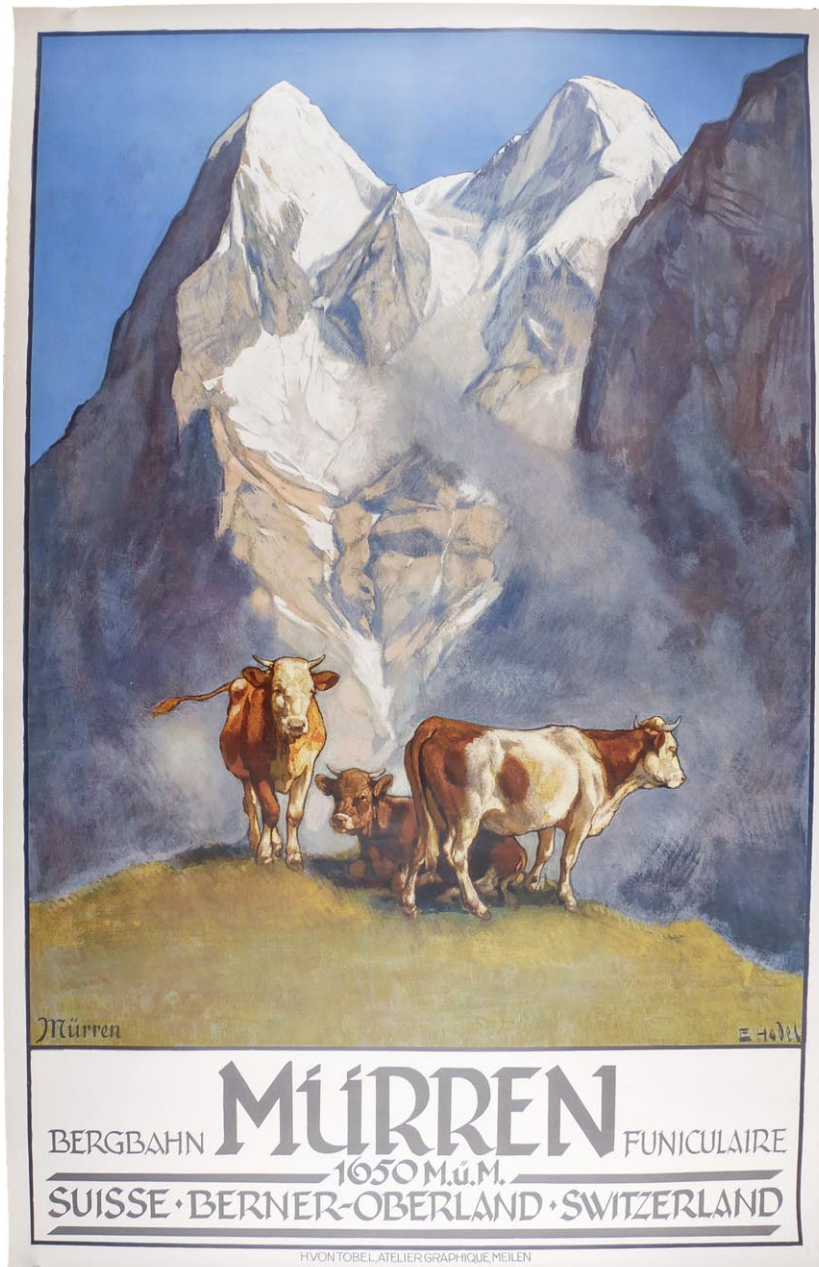




59. MASSEAU, Pierre Felix (1905-1994). [Milano]. Venice Simplon Orient Express. Original lithograph with colour, printed by Imprimerie Bauge, first edition, France, 1981. 985 x 620 mm. £395



60. ANON. Malta. Original lithograph published by the Government Tourist Bureau, Valletta, Malta, printed in Great Britain by the Vandyck Printers, Limited, c.1950. 760 x 510 mm. £95

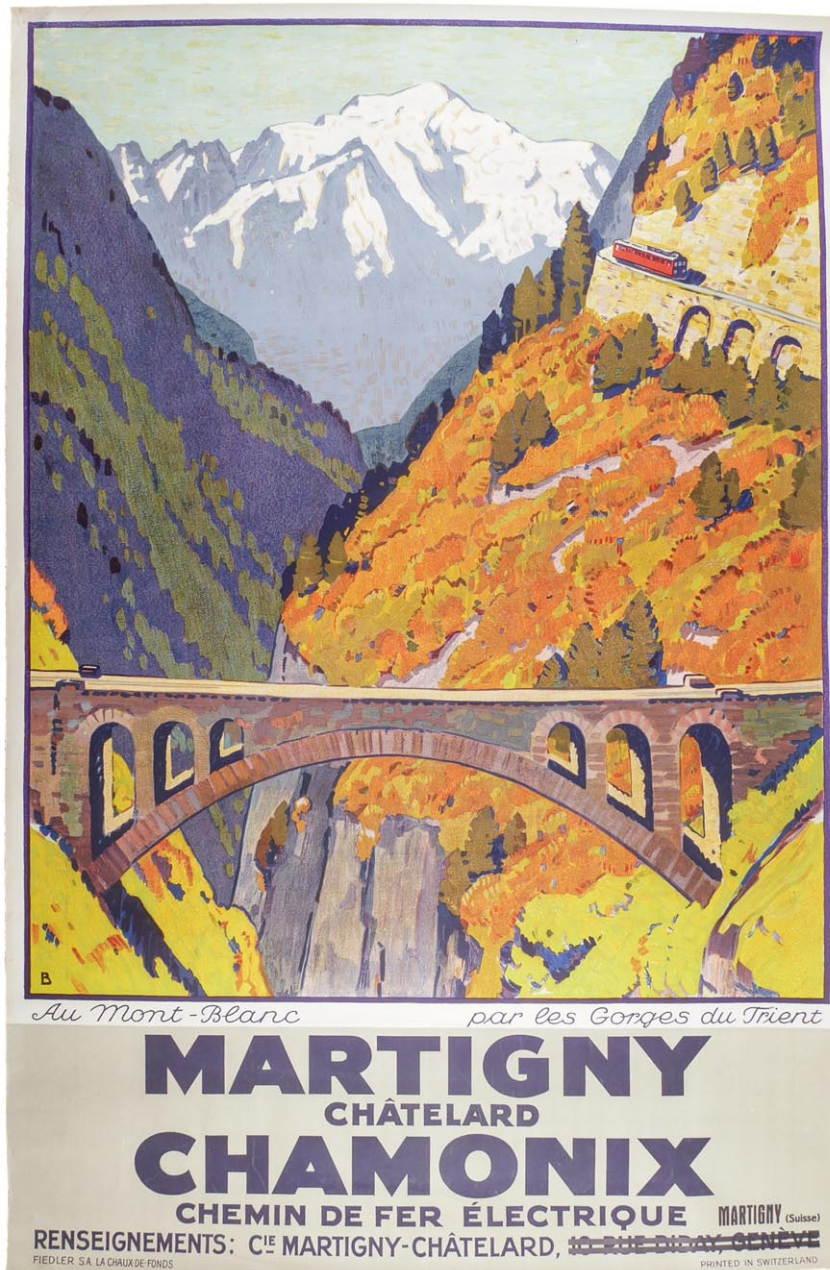


61. HODEL, Ernst (1881-1955). Mürren - Suisse Berner-Oberland Switzerland. Original lithograph with colour, printed by H. von Tobel Atelier Graphique, Meilen, 1925. 1020 x 640 mm. £2,850





62. MEUSER, Karl. Engelberg - Schweiz Suisse Switzerland. Original lithograph with colour, printed by C. J. Bucher AG, Luzern, c.1940. 1020 x 640 mm. £975



63. BAUMBERGER, Otto (1889-1961). Martigny Châtelard Chamonix. Original lithograph with colour, published by Compagnie du chemin de fer Martigny-Châtelard, printed by Fiedler S.A. La Chaux-de-Fonds, 1925. 1000 x 650 mm. £2,350

Showing the Trient railway bridge with spectacular view of the Trient Gorge and Mont Blanc in the distance.





64. WEHRLI A.-G. Switzerland - Matterhorn Zermatt. Original heliograph, printed by Impr. Rotogravure, Geneve, c.1920. 1000 x 650 mm. £1,050

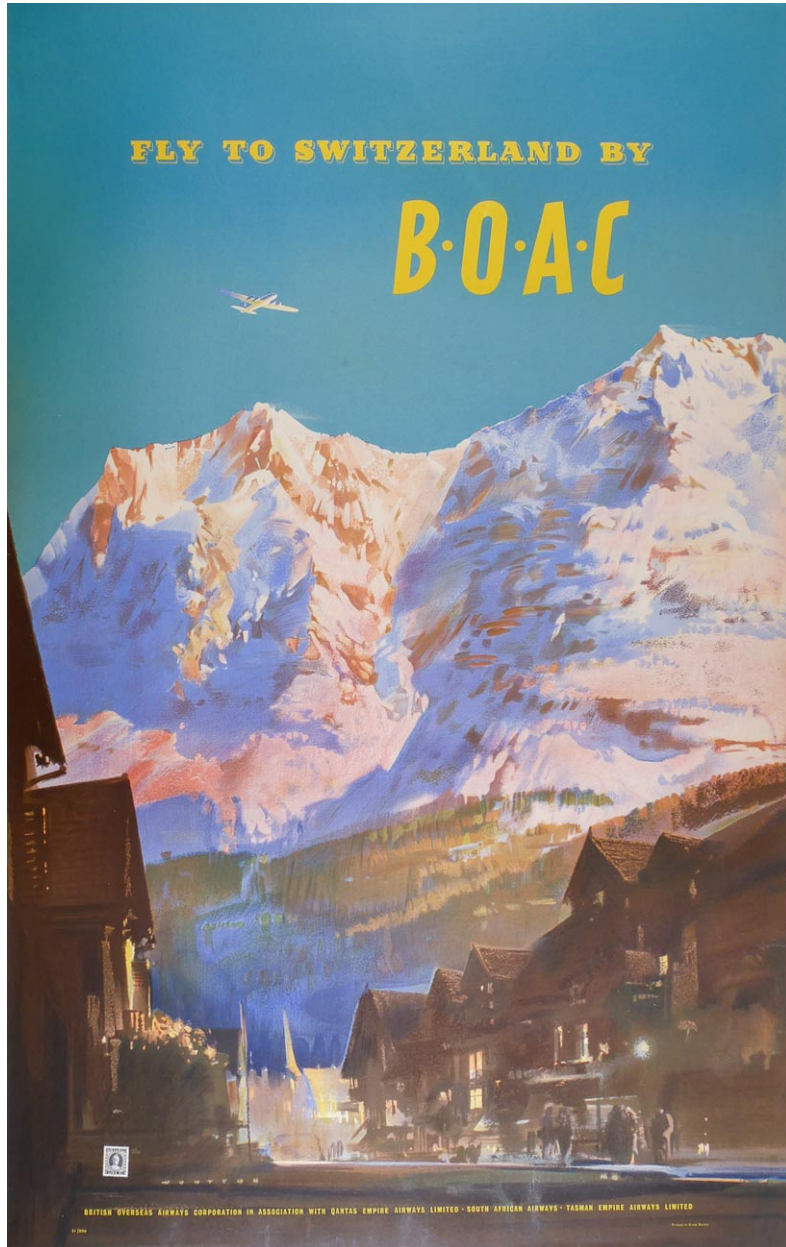
There is a Whymper quote printed on the poster in Danish translated to read: "The world was at our feet, and the Matterhorn was conquered. The old sayings are true, - there are ghosts on top of the Matterhorn."

Edward Whymper FRSE (27th April 1840 - 16th September 1911) was an English mountaineer, explorer, illustrator, and author best known for the first ascent of the Matterhorn in 1865. Four members of his climbing party were killed during the descent. Whymper also made important first ascents on the Mont Blanc massif and in the Pennine Alps, Chimborazo in South America, and the Canadian Rockies.





65. WIELAND, Hans Beat (1867-1945). Postes Suisses Services d'autocars des Alpes. Original lithograph with colour, published by La Poste Suisse, printed by J. C. Müller, Zürich, 1935. 1020 x 640 mm. £2,500



66. WOOTON, Frank (1914 - 1998). Fly to Switzerland by BOAC. Original lithograph with colour, linen backed, published by BOAC - British Overseas Airways Corporation, printed in Great Britain, 1951. 1020 x 640 mm. £2,500

With Italian stamp in lower left corner.



67. MATHIEU, Georges. Grece, Air France. Original offset lithograph, printed by S.N. Imp P. Dupont in Paris, France, c.1965. 1000 x 600 mm. £250





68. BAUBAUT, Lucien. Tschechoslowakei, Böhmerwald - Bohemian Forest. Original lithograph with colour, printed in Germany, c.1930. 940 x 630 mm £450.

The Bohemian Forest, known in Czech as Šumava and in German as Böhmerwald, is a low mountain range in Central Europe. Geographically, the mountains extend from Plzeň Region and South Bohemia in the Czech Republic to Austria and Bavaria in Germany, and form the highest truncated uplands of the Bohemian Massif, up to 50 km wide. They create a natural border between the Czech Republic on one side and Germany and Austria on the other.



69. JEGES, Erno (1898-1956). Budapest. Original lithograph with colour, published by National Hungarian Council of Tourist Traffic, Budapest, printed by Athenaeum, Hungary, c.1930. 950 x 630 mm. £495



70. MEDNIS, Voldemar (1892-1975). Besuchen Sie Lettland - Visit Latvia. Original lithograph with colour, published by Chemins de fer de l'Etat de Lettonie, printed by Ernst Plates, Riga, 1930. 980 x 680 mm. £750





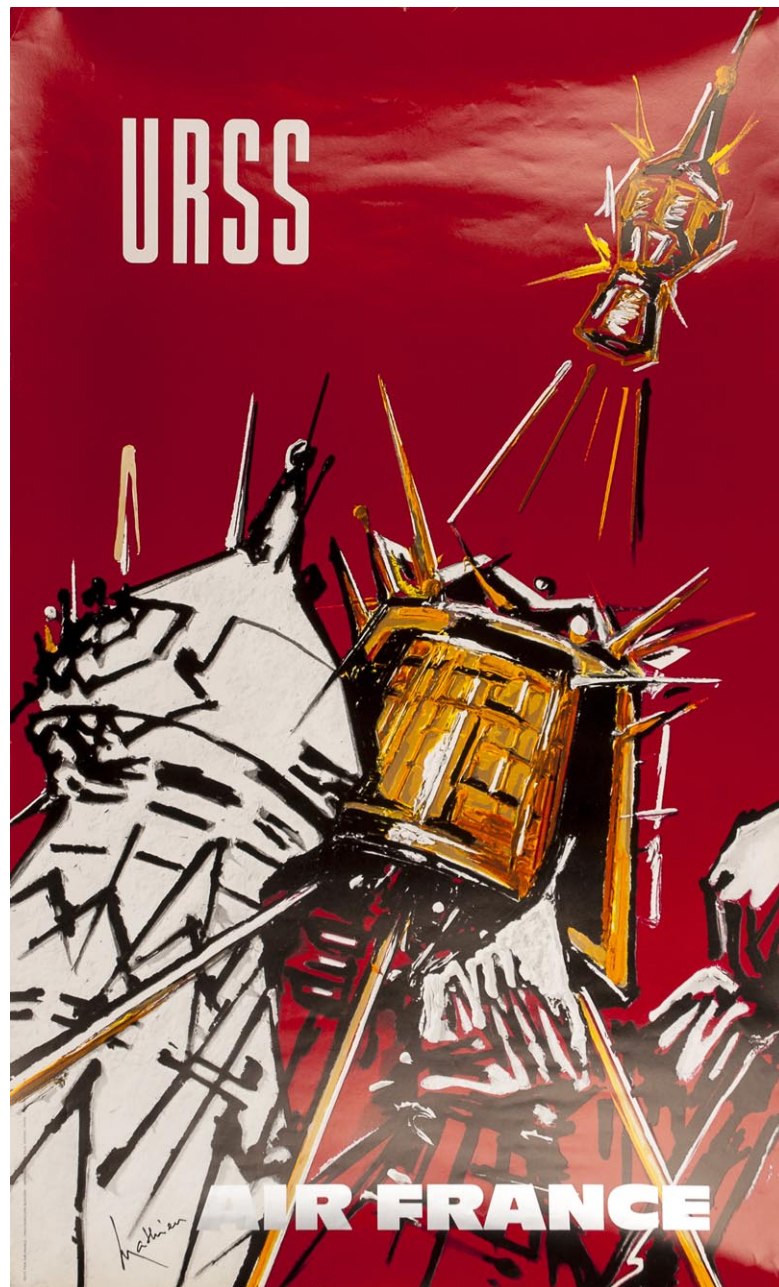
71. MATHIEU, Georges. Israel, Air France. Original offset lithograph, printed by S.N. Imp P. Dupont in Paris, France, c.1965. 1000 x 600 mm. £250



72. PEARS, Charles. Suez Canal. Original lithograph with colour, linen backed, issued by the Empire Marketing Board for their highway to India series, printed for H.M. Stationery office by Suttley & Silverlock, Ltd., Blackfriars Road, London, 1928. 500 x 750 mm.

Some tears which have been restored during linen backing.

£1,750

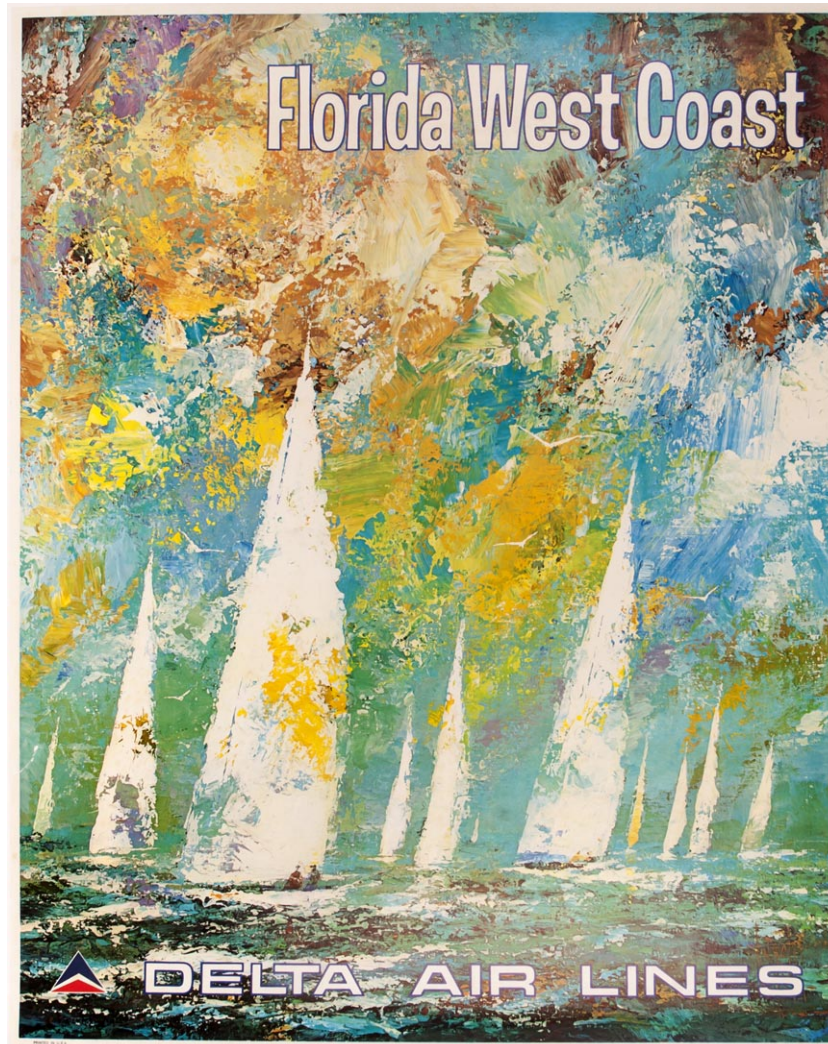


73. MATHIEU, Georges. URSS, Air France. Original offset lithograph, printed by S.N. Imp P. Dupont in Paris, France, c.1965. 1000 x 600 mm. £250





74. ANON. Russia, Pan Am. Original lithograph with colour, linen backed, printed in U.S.A, c.1970.  
1080 x 710 mm. £750

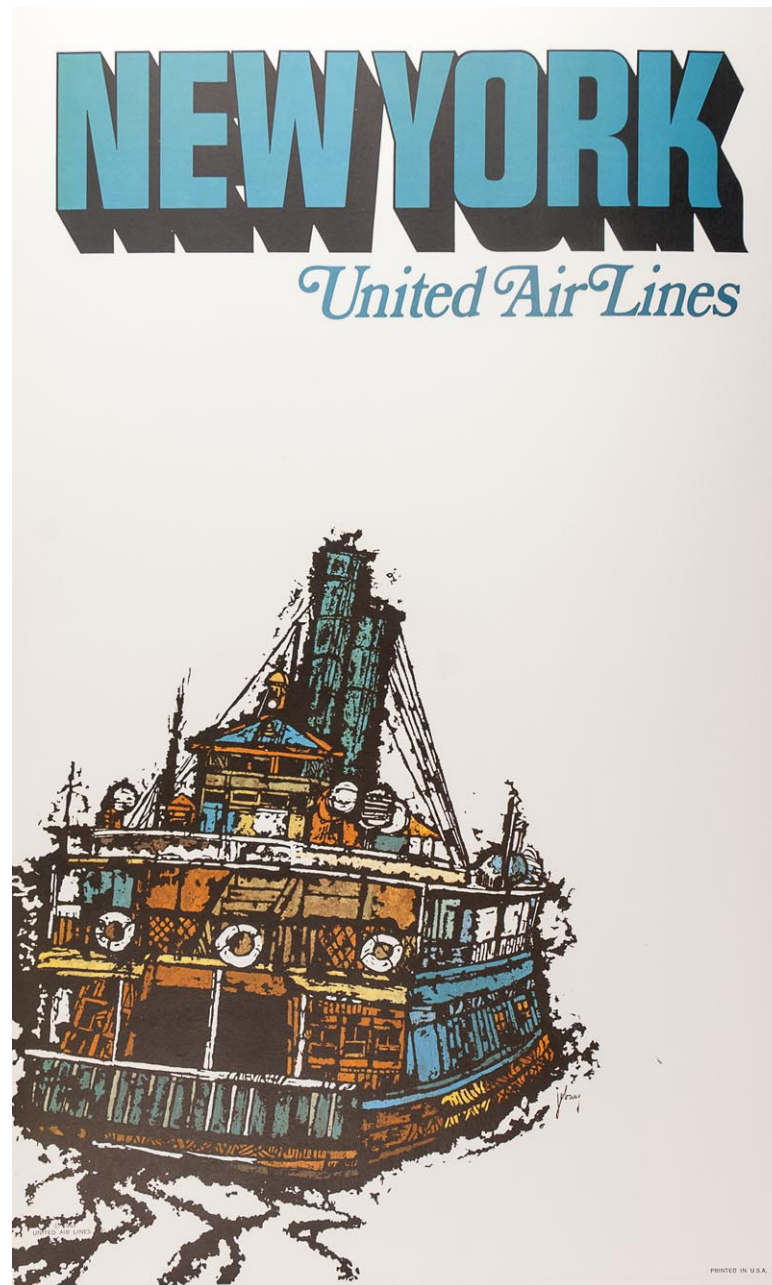


75. ANON. Florida West Coast, Delta Air Lines. Original lithograph with colour, linen backed, printed in U.S.A., c.1970. 705 x 565 mm. £250

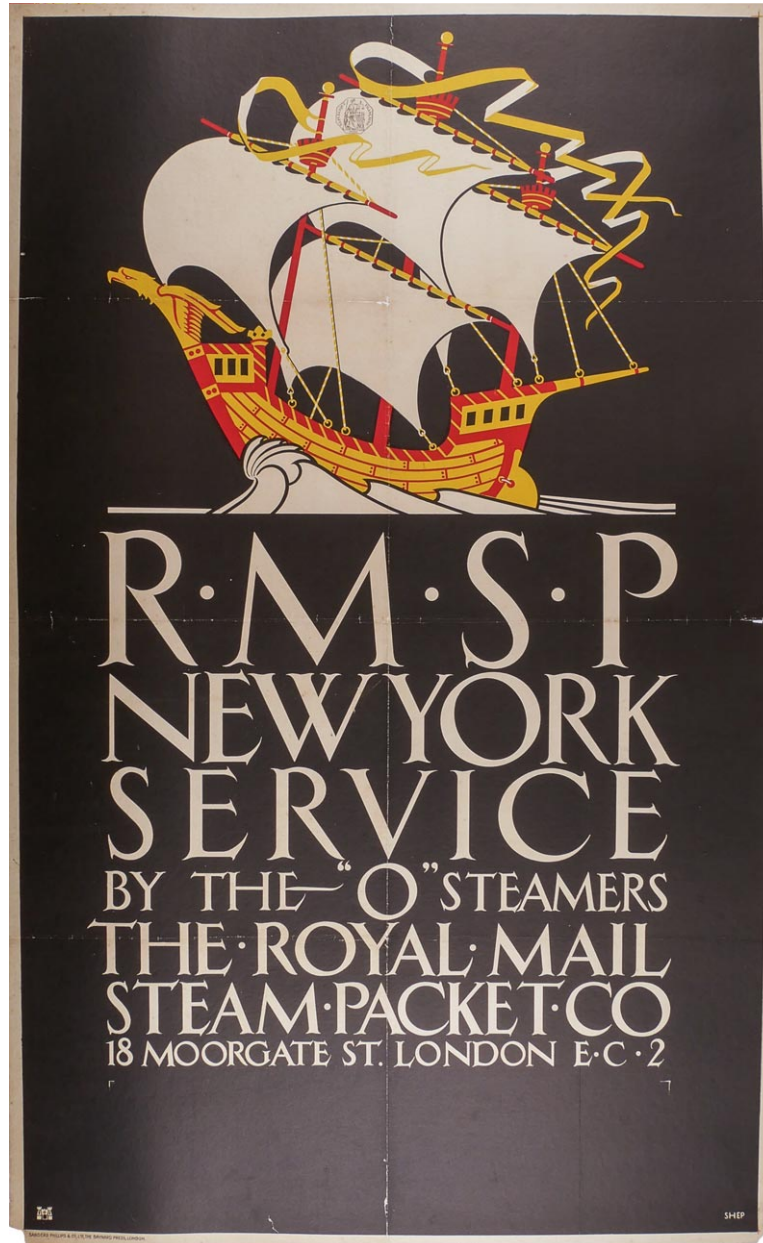


76. KLEIN, David (1918-2005). Las Vegas, Fly TWA. Original lithograph with colour, linen backed, printed in U.S.A, c.1960. 1015 x 640 mm. £1,050





77. JEBARY. New York, United Air Lines. Original lithograph with colour, linen backed, printed in U.S.A., 1967. 1030 x 630 mm. £425



78. SHEPHERD, Charles. R.M.S.P New York Service. Original lithograph with colour, linen backed, printed by Sanders Philips & Co. Ltd, The Baynard Press, London, c.1920. 1020 x 630 mm.

R.M.S.P New York Service by the famous "O" steamers probably means sailing with ships like the Orbita, Orca and Orduña. £785



79. KAUFFER, E. Mcknight. Aloha Hawaii, Fly Pan American, World's most experienced Airline. Original lithograph with colour, linen backed, printed in U.S.A, 1953. 1060 x 720 mm. £1,450

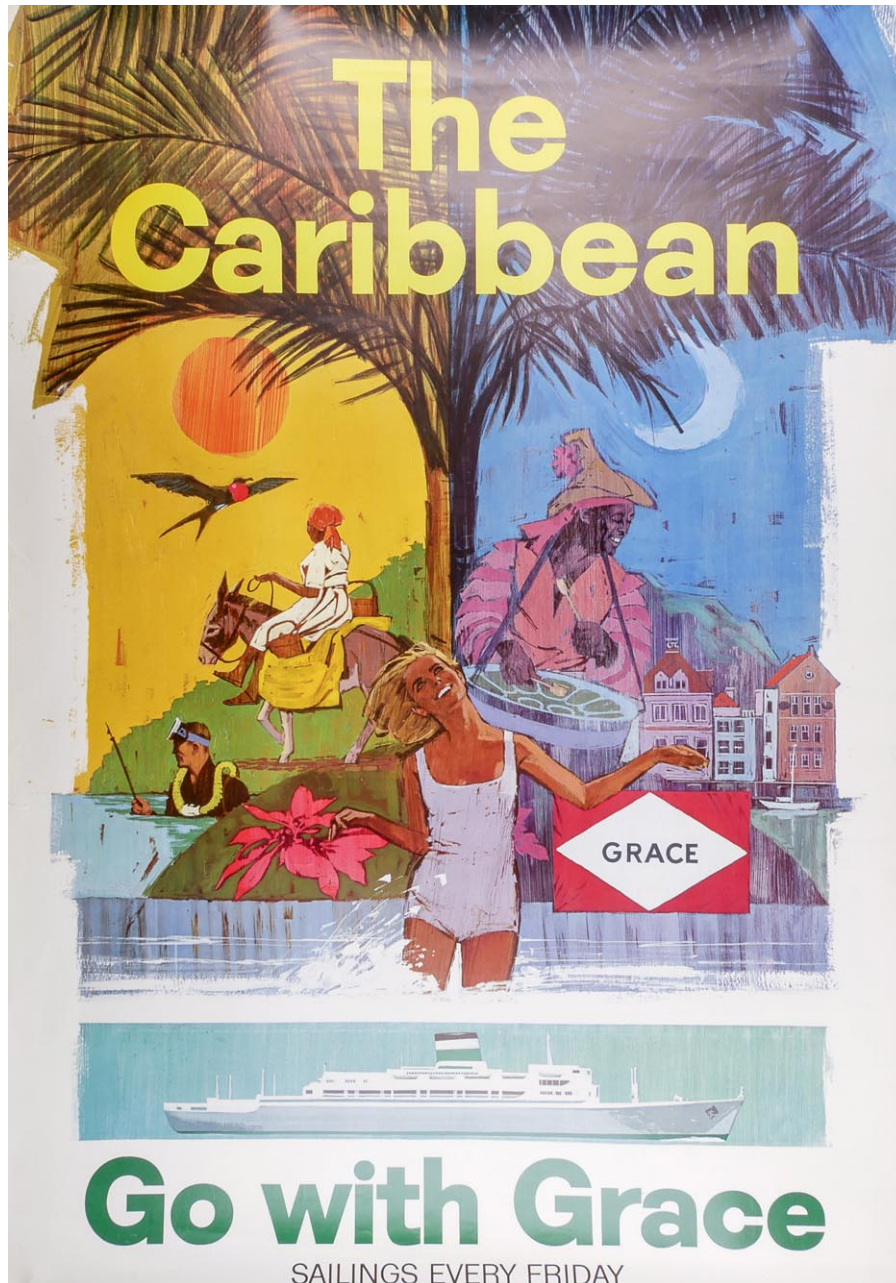




80. LINTOTT. A Canadian Salmon Cannery on the Pacific Coast. Original lithograph in colour, linen backed, issued by the Empire Marketing Board, printed for H.M. Stationary office by Johnson, Riddle & Co. Ltd. London. c.1930. 505 x 750 mm. £550



81. ANON. Routes of Pan American World Airways System. Original lithograph with colour, linen backed, printed by Jeppesen and Company, Denver, Colorado, U.S.A, 1952. 465 x 810 mm. £425



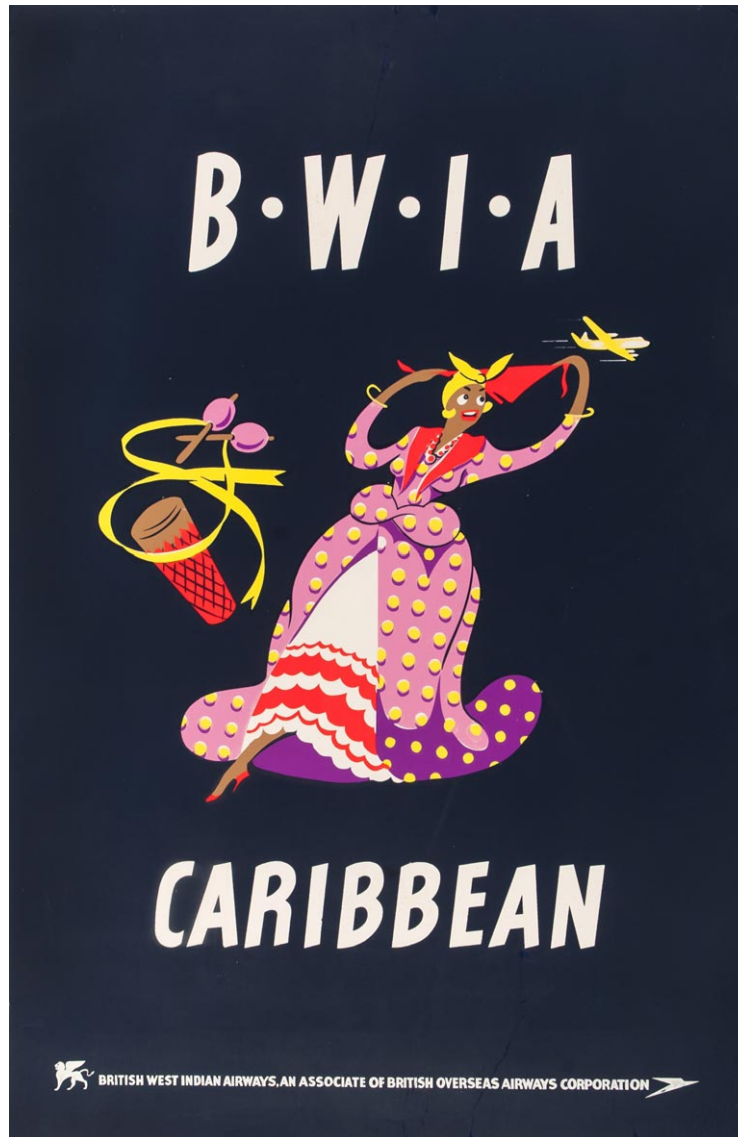
82. ANON. The Caribbean, Go with Grace. Original lithograph with colour, c.1960. 1020 x 700 mm.

£795



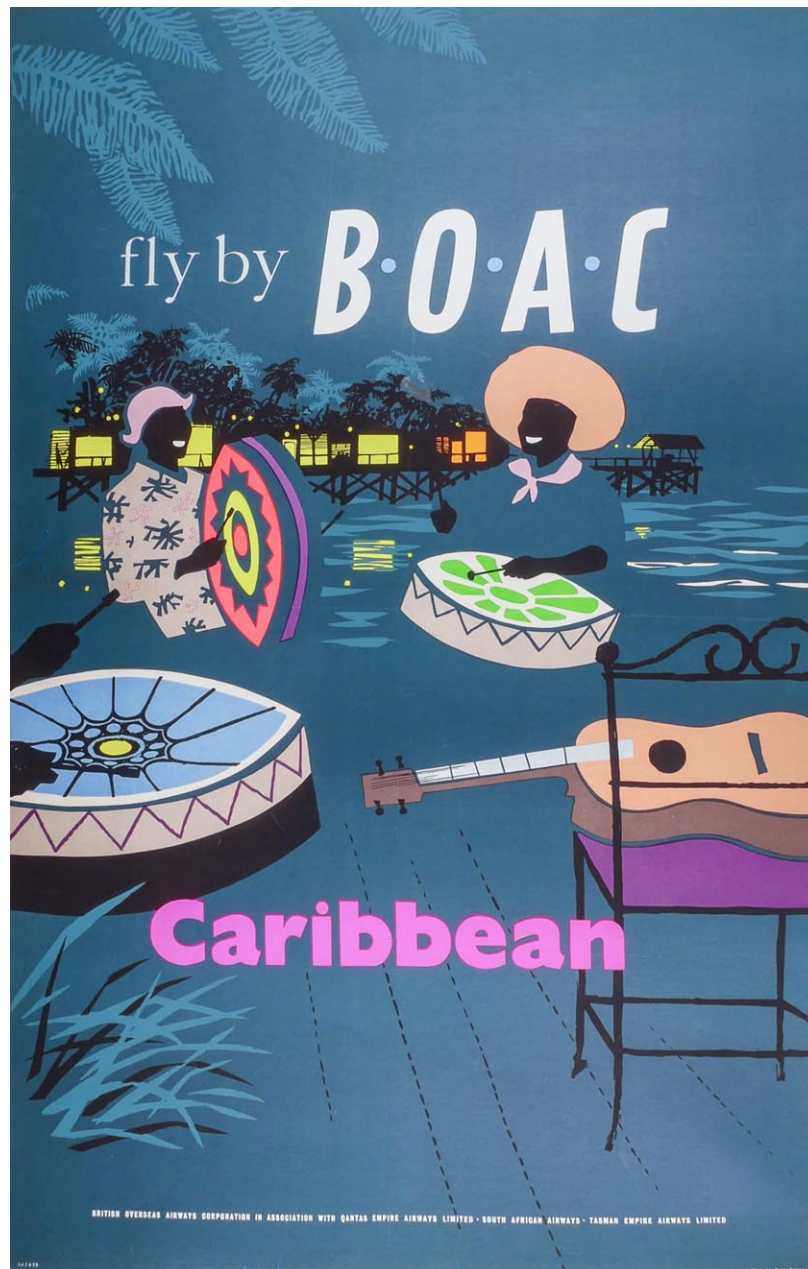


83. COSOMATI, Aldo. B.W.I.A., Antigua. Original silkscreen with strong Day-Glo colours on a velvety matt blue, linen backed, printed in Great Britain, c.1950. 760 x 510 mm. £950



84. COSOMATI, Aldo. B.W.I.A., Caribbean. Original silkscreen with strong Day-Glo colours on a velvety matt blue, linen backed, printed in Great Britain for British West Indian Airways, an associate of British Overseas Airways Corporation, c.1950. 760 x 510 mm. £1,250

Some tears which have been restored during linen backing. Not affecting the overall look of the poster.



85. NEGUS & SHARLAND. Fly by B.O.A.C. Caribbean. Original silk screen with colour, linen backed, published by British Overseas Airways Corporation, printed in Great Britain, 1954. 1010 x 635 mm.

£1,150





86. H.B. Cerca del Sol Santiago Tucuman Argentino Argentina. Original lithograph with colour, linen backed, published by Ferrocarril Central Argentino, c.1940. 1100 x 735 mm. £1,350

A rare poster of Argentina.



87. RIGALT, Carlos (1901-1977). Visite la Antigua, Guatemala. Original lithograph with colour, published by Asociacion de Amigos de la Antigua Guatemala, c.1950. 880 x 590 mm. £450

Some fold lines visible.



88. MATHIEU, Georges. Inde, Air France. Original offset lithograph, printed by S.N. Imp P. Dupont in Paris, France, c.1965. 1000 x 600 mm. £250





89. NIELSON, Otto (1916-2000). Africa, SAS. Original lithograph with colour, printed by Al-offset, Andreasen & Lachmann, Copenhagen, c.1950. 1000 x 620 mm. £825



90. NIELSON, Otto (1916-2000). Africa, SAS. Original lithograph with colour, printed by Affset Andreasen and Sonner, Copenhagen, c.1960. 1000 x 620 mm.

There is a small tear to left side.

£750



91. COOPER, Richard T. (1884-1957). Union-Castle Line to South and East Africa. Original lithograph with colour, linen backed, printed by Day & Wilkins Ltd. London, c.1935. 1010 x 640 mm.

Some fold lines and spotting visible.

£1,950





92. ANON. The Orient is Hong Kong, Jet B.O.A.C. Original lithograph with colour, published by The Hong Kong Tourist Association, printed by Yat Sun Printing, c.1960. 885 x 620 mm. £350



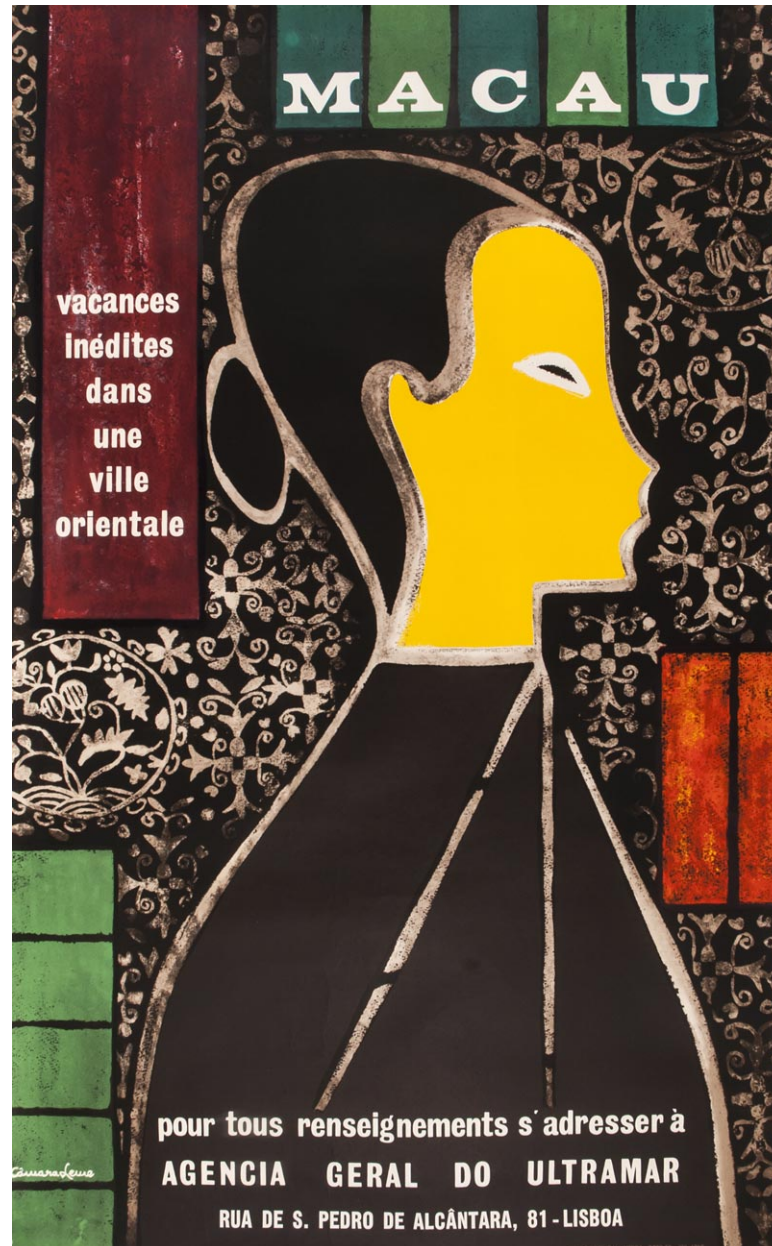
93. ROGERS, Harry (1929-2012). Hong Kong, Qantas, Australia's round-the-World Airline. Original lithograph with colour, linen backed, printed in Australia, c.1960. 495 x 370 mm. £1,250  
 Showing the Peak hills in the background behind the traditional Sampan and Junk boats.  
 Some restored pin holes to corners.





94. MATHIEU, Georges. Hong Kong, Air France. Original offset lithograph, printed by S.N. Imp P. Dupont in Paris, France, c.1965. 1000 x 600 mm. £350





95. LEWE, Cawara. Macau, Unique holidays in an oriental city. Original lithograph with colour, printed by lito de Portugal, Lisboa, 1960. 995 x 620 mm. £1,950

It is rare to find posters of Macau. In 2006 it became the gambling capital of the world, overtaking Las Vegas in terms of Casino revenue. Macau was under Portugese control until 1999.



96. KURIYAGAWA, Kenichi. Sapporo. Original lithograph with colour, linen backed, printed in Japan, 1955. 1040 x 730 mm. £950



97. SHOEN, Uemura. Fly Japan Air Lines. Original lithograph with colour, linen backed, printed in Japan, 1971. 995 x 635 mm. £450





98. GEORGET, Guy. extreme - orient, Air France. Original lithograph with colour, linen backed, printed in France - Imp, Bedos & Co, Paris, published by Direction Artistique Jean Carlu, 1956. 1000 x 625 mm. £750





100. GARDNER, James. Imperial Airways. Original lithograph with colour, linen backed, published by Imperial Airways Ltd., London, England, printed in Great Britain by Curwen Press Ltd., London, 1938. 630 x 1000 mm. £3,200

Showing the Ensign air liner & Empire Flying-boat with routes.





101. HENRION, Frederic Henri Kay (1914-1990). B.O.A.C it's a small world by Speedbird. Original lithograph with colour, linen backed, published by BOAC - British Overseas Airways Corporation, printed in England, 1947. 1020 x 640 mm. £1,150

With Italian stamp in lower right corner.

The Speedbird is the stylised emblem of a bird in flight designed in 1932 by Theyre Lee-Elliott as the corporate logo for Imperial Airways. It became a design classic and was used by the airline and its successors - British Overseas Airways Corporation and British Airways - for 52 years. The term "Speedbird" is still the call sign for British Airways.





**VINTAGE TRAVEL POSTERS 2019**

**Exhibition**

at

Henry Sotheran's Print Department  
2 Sackville Street, London, W1S 3DP

**7<sup>th</sup>-28<sup>th</sup> November 2019**

**Sotheran's**

EST. LONDON 1761