

Photographs of China



Krul Antiquarian Books



Krul Antiquarian Books

Burg Jansoniushof 107, NL 2131 BM Hoofddorp
The Netherlands
Telephone +31 (0)23 7370515
e-mail: renekrul@xs4all.nl
Visit our Webpage at: <http://www.krulantiquarianbooks.nl>

Photographs of China

Prices in EUR

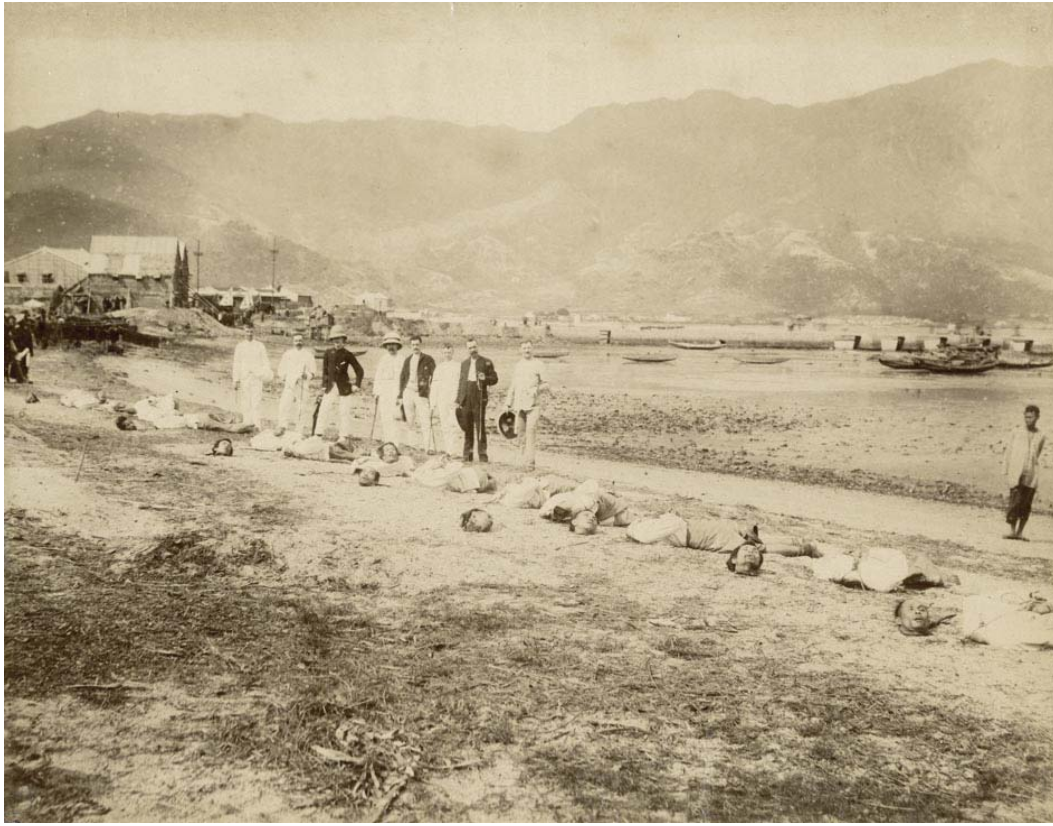
1 BRUSSE. Brusse shaved by a chinese barber. 1900. Original photograph, gelatine silver print, 6,2 x 10 cm. 24,00



2 BURKE-GRAPHIC HOUSE, James. Panorama in flat valley, of Sichang, Lololand, China. New York, Graphic House Inc., ca. 1964, Original photograph, silverprint, 19 x 19,5 cm. Photograph no 2199. 36,00



3 CANTON. After the execution of pirates. ca. 1890. Original photograph, albumen print, 21,4 x 27,4 cm. 420,00



4 CANTON. Execution of pirates. ca. 1890. Original photograph, albumen print, 20,7 x 27,5 cm. - With a small notation in ink at the upper border. 420,00



5 CANTON. Five Hundred Genii Temple. ca. 1880-1890. Original photograph, cabinet-card, gelatine silver print, 10 x 14,1 cm, on mount. 24,00



6 CANTON. The Three Pure Ones, Buddhas, Past, Present, Future. ca. 1880-1890. Original photograph, cabinet-card, gelatine silver print, 10 x 14,4 cm, on mount. 30,00



7 CANTON. View on a harbour with boats, a Pagode in the background (Temple of the Six Banyan Trees). 1900. Original photograph, gelatine silver print, 9,8 x 13,5 cm. 84,00



8 CANTON. Canton River (Pearl River or Zhujiang) with a Flower Boat. ca. 1880. Original photograph, albumen print, 21,5 x 27,5 cm. Photograph No 262. 480,00



9 CANTON. Sheung-mun-tai Street in Canton ca. 1880. Original photograph, albumen print, 27 x 21,2 cm. Photograph No 259. 600,00



10 CHAUVEL, Jean. Portrait of Jean Chauvel, first ambassador in Peking. Belga Press, 1964. Original photograph, silverprint, 18 x 13 cm (24-1-1964). 24,00



11 CHEFOO (YANTAI). View on Chefoo. 1900. Original photograph, gelatine silver print, 9,5 x 13,6 cm. 72,00



12 CHINA. Flower Boat. ca. 1880. Original photograph, albumen print, 21,2 x 26,8 cm, on mount. Few small white points. 420,00



13 CHINA. Mother and her two children in war destruction. ca. 1938-1940. Original photograph, silverprint, 12,5 x 14 cm. Probably in Sin-U-dju (?). 30,00



14 CHINA. Two small chinese boats in harbour. ca. 1900. Original photograph, carte de visite, gelatine silver print, 6 x 8,6 cm. - Loss of picture to right border. 12,00



15 CHINA. Chinese jonk (1). ca. 1900. Original photograph, carte de visite, gelatine silver print, 6,1 x 8,7 cm. 21,60



16 CHINA. Chinese jonk (2). ca. 1900. Original photograph, carte de visite, gelatine silver print, 6 x 8,9 cm. 18,00



17 CHINA. War destruction. ca. 1938-1940. Original photograph, silverprint, 17,7 x 26,6 cm, two parts stick together. Probably in Sin-U-dju (?). 72,00



18 CHINA. Chinese Theatre. ca. 1890-1900. Original photograph, cabinet card, gelatine silverprint, 9,5 x 7,1 cm, on mount. Strong discoloured. 19,20



19 CHINA. Two Girls. ca. 1890-1900. Original photograph, cabinet card, gelatine silverprint, 9,9 x 7,1 cm, on mount. Discoloured. 19,20



20 CHINA. Japanese-Chinese War, in North East China, Decapitation. ca. 1900. Original photograph, gelatine silver print, 12 x 17,2 cm, on mount. Few small spots. 72,00



21 CHINA. Temple Gate. ca. 1900. Original photograph, cabinet-card, silver print, 11 x 8,1 cm on mount. 21,60



22 CHINA. Small Temple. ca. 1900. Original photograph, cabinet-card, gelatine silver print, 10,9 x 7,9 cm on mount. 24,00



23 CHINA. Chinese village. 1900. Original photograph, gelatine silver print, 6,2 x 10,6 cm. 24,00



24 CHINA. View on a Chinese village. 1900. Original photograph, gelatine silver print, 6 x 10,6 cm. 24,00



25 CHINA. Mr. Speelman in conversation with an older chinese woman. 1900. Original photograph, gelatine silver print, 6,2 x 10,1 cm. 24,00



26 CHINA. A Chinese man. 1900. Original photograph, gelatine silver print, 10,3 x 6,1 cm. 18,00



27 CHINA. Canal with ducks and boats. 1900. Original photograph, gelatine silver print, 6,1 x 10 cm. 18,00



28 CHINA. Groupportrait with Rien, Lambooy, Speelman, Brusse & a chinese person. 1900. Original photograph, gelatine silver print, 10,4 x 6,2 cm. 24,00



29 CHINA. Chinese Eastern Railway. IV Class. 1900. Original photograph, gelatine silver print, 8,6 x 8,4 cm. 36,00



30 CHINA. Chinese village in Eastern China. 1900. Original photograph, gelatine silver print, 8,6 x 8,4 cm. 30,00



31 CHINA. Chinese carts and cartsmen in Eastern China. 1900. Original photograph, gelatine silver print, 8,7 x 8,4 cm. 36,00



32 CHINA. Chinese theatre in Eastern China. 1900. Original photograph, gelatine silver print, 8,7 x 8,4 cm. 42,00



33 CHINA. Panoramic view of a suburb town with tramway (Shanghai?). 1900. Original photograph, albumen print, 9,8 x 14,2 cm. 108,00



34 CHINA. Panoramic view of a suburb. 1900. Original photograph, albumen print, 9,8 x 14,2 cm. 84,00



35 CHINA. Temple with Haechi statue in Eastern China. 1900. Original photograph, albumen print, 10 x 14 cm. 84,00



36 CHINA. Small Pagoda in a village, with two little girls standing on it. 1900. Original photograph, albumen print, 14,4 x 10 cm. 96,00



37 CHINA. Statue on stone frog statue, two little girls standing on it. Small pagoda in the background. 1900. Original photograph, albumen print, 9,9 x 14,7 cm. 96,00



38 CHINA. Large statue with animal motif on stone frog statue. 1900. Original photograph, albumen print, 14,1 x 9,8 cm. 84,00



39 CHINA. Temple, bridge and tramway & streetscene in Eastern China (Shanghai?). 1900. Original photograph, albumen print, 10 x 14,7 cm. 96,00



40 CHINA. Temple with steps in Eastern China. 1900. Original photograph, albumen print, 9,7 x 14,2 cm. 84,00



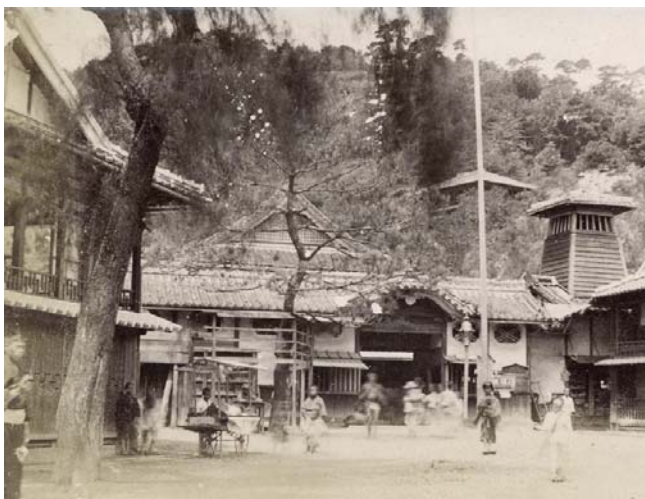
41 CHINA. Temple in Eastern China. 1900. Original photograph, albumen print, 9,7 x 14,2 cm. 84,00



42 CHINA. Temples in Eastern China. 1900. Original photograph, albumen print, 9,8 x 14,9 cm. 84,00



43 CHINA. Marketplace in Eastern China. 1900. Original photograph, albumen print, 9,8 x 14,9 cm. 84,00



44 CHINA. People in front of a house in Eastern China. 1900. Original photograph, albumen print, 10,9 x 14,2 cm. 84,00



45 CHINA. Panoramic view on houses in Eastern China. 1900. Original photograph, albumen print, 10,9 x 14,2 cm. 84,00



46 CHINA. Panoramic view on houses near Shanghai. 1900. Original photograph, albumen print, 10,4 x 13,8 cm. 72,00



47 CHINA. A Manchu woman. ca. 1890. Original photograph, gelatine silver print, 26,6 x 20,2 cm. 480,00



48 CHINA. Rooftop view over a town. ca. 1880. Original photograph, albumen print, 20,4 x 27 cm. Photograph No 315. 360,00



49 CHINA. Interior of a Chinese Room. ca. 1880. Original photograph, albumen print, 23,3 x 28,5 cm. Photograph No 275. 360,00



50 CHINA. Interior of a Chinese Room. The reception room of a well-to-do Chinese merchant. The furniture is chiefly of Canton manufacture, with a few articles from Soochow. ca. 1880. Original photograph, albumen print, 22,8 x 28,5 cm. Photograph No 325. 360,00



51 CHINESE WALL. Memorial Gates at the Chinese Wall. 1900. Original photograph, gelatine silver print, 6,5 x 10,6 cm. 24,00



52 DA KANG. Miao. Older man with straw-bale. Peking, ca. 1995. Original photograph, silverprint, 22 x 30 cm in passe-partout, framed. 180,00

¶ Kang Xue Song (Da Kang) was born in China on 24th January, 1964 in Beijing. In 1985 he entered the China Photographic Correspondence Institute, and began work as a freelance photographer in 1986. In 1998 he became a member of Photographers' Association of China and News Photography Association. Kang worked as a press-photographer at Beijing Morning Post during the years 2000-2003, and later set up his own photo studio "Da Kang Photographic Pictures Service". Some of his works are found in the Guangdong State museum and he also has private collectors. Since 2005 he has served as the director of the Wide Angle Photography Association of Beijing.

1985 - Studied in China Photographic Correspondence Institute

1986 - Begun work as a freelance photographer

1998 - Became a member of the Photographers Association of China

1998 - Joined the News Photography Association

2000-2003 - Joined the Beijing Morning Post as a press-photographer

2003 - Set up his own photo shop "Da Kang Photographic Pictures Service"

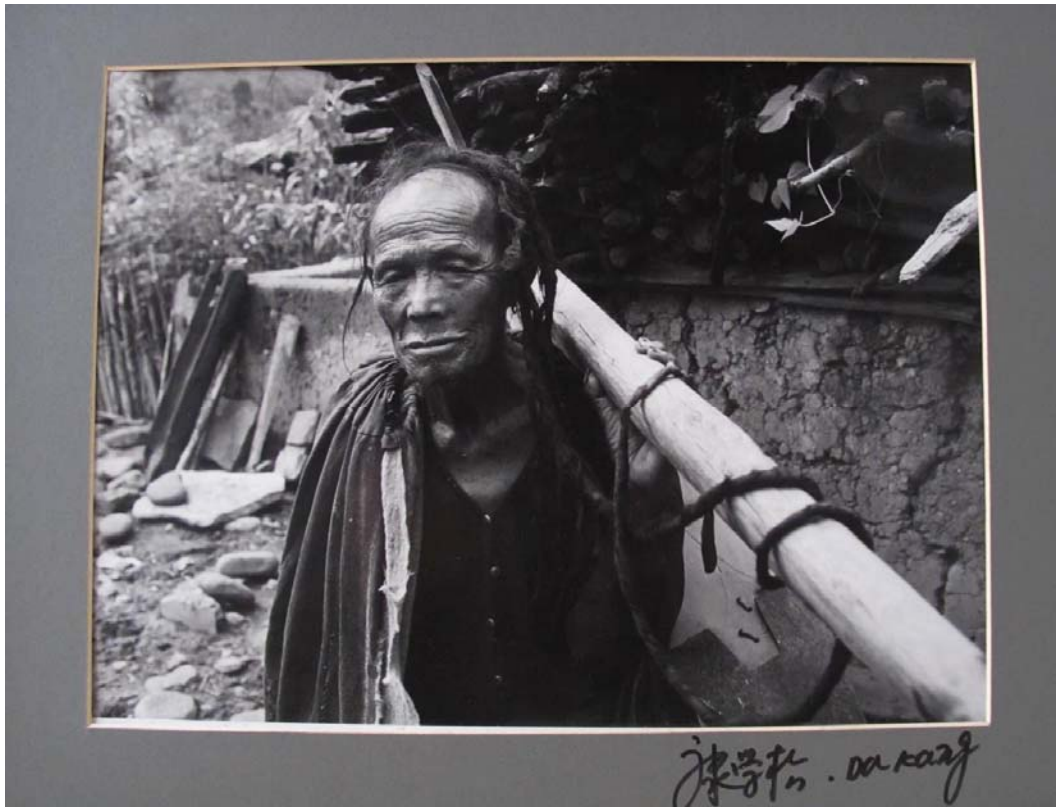
2004 - Some works were collected by Guangdong museum

2005 - Became a director of the Wide Angle Photography Association of Beijing.



康学松 . Da Kang

53 DA KANG. Miao. Older man with wooden tool. Peking, ca. 1995. Original photograph, silverprint, 22 x 30 cm in passe-partout, framed. 180,00



54 DA KANG. Miao. Long horned Wedding. Peking, 1998. Original photograph, silverprint, 22 x 30 cm in passe-partout, framed. 144,00



55 DA KANG. Miao. Women. Peking, 1998. Original photograph, silverprint, 22 x 30 cm in passe-partout, framed. 156,00



56 DA KANG. Miao. Men with birds. Peking, 1998. Original photograph, silverprint, 22 x 30 cm in passe-partout, framed. 156,00



57 DAIREN (DAILEN). Birds Eye Vieww on the Wharves of Dairen Port. ca. 1930.
Photopostcard, silver print, 9 x 14 cm. 21,60



58 DALIAN. Market Dalny. 1900. Original photograph, gelatine silver print, 8,6 x 8,4 cm.
42,00



59 DALIAN. Dalny, people, streetscene. 1900. Original photograph, gelatine silver print,
8,6 x 8,3 cm. 42,00



60 DALIAN, PORT ARTHUR. Hotel Dalny. 1900. Original photograph, gelatine silver print, 8,7 x 8,4 cm. 42,00

¶ There were three Yamato hotels in Dairen, now called Dalian. (Yamato was the name of an old Japanese province, and because of its importance, at one time stood for all of Japan.) - The first hotel, called simply No.1, was built in 1914 on the main traffic circle. Dairen, originally called Dalny, was established in 1899 by the czar of Russia but was lost in 1905 to the Japanese, who ruled it for the next 40 years, during which time it became an efficient, orderly city, expanding on the Russian plans for circles, parks and well-laid streets. After the war it was reclaimed by the Russians, who gave it back to the Chinese in 1955.



61 FOOCHOW. The Wall of Foochow with boats in front. 1900. Original photograph, gelatine silver print, 6,5 x 10,6 cm. 24,00



62 GOEDKOOOP, Rob. Rob Goedkoop, in the morning, shaving on the House boat. 1900. Original photograph, gelatine silver print, 8,3 x 10,3 cm. 18,00



63 GREEN, O. M. (Introduction). Shanghai of To-day. A souvenir album of Fifty Vandyck prints of "The Model Settlement". Shanghai-Hongkong-Singapore, Kelly & Walsh. Limited, 1928. 2nd enlarged edition, 15pp text, with 50 tipped-in photographic plates, each with accompiled text leaf, 4to, original gilt leather binding wirh mounted photographic plate on frontcover. - Very small wear at upper spine and corners. - In very good condition. 3.000,00



64 HANSEN, Ben China. Chinese grandmother with grandchild in the street with all kinds of attributes. Amsterdam, 1970. 1st Edition 40 x 30 cm Original photograph, silver print, ca. 1970. Very nice impression. 250,00



65 HANSEN, Ben China. Group of toddlers practising tai-ch in the street. Amsterdam, 1970. 1st Edition 30 x 40 cm Original photograph, silver print, ca. 1970-1975. Very nice impression. 80,00



66 HARTUNG. Bridge in Peking, Peking, Hartung's Photo Shop, ca. 1905-1910. Original photograph, silver print, 8,3 x 14 cm, cabinet-card, with stamp on verso. 21,60
¶ Hartung, Peking, Legation Street.



67 HMS HOLLAND. Steamship the H.M.S. Holland leaving Shanghai. 1900. Original photograph, gelatine silver print, 9 x 12,2 cm. 30,00



68 HONG KONG. Boat Woman & Chinese Lady. ca. 1880. Original photographs, two albumen prints, 14,2 x 10,2 cm each, on mount. 420,00



69 HONG KONG. European in Hong Hong. 1864. Original photograph, carte de visite, albumen print, 8,3 x 5,8 cm, on mount. Hong Kong, 21st Nov. 1864. 48,00



70 HONG KONG. Happy Valley Race Course with creek infield. ca. 1870. Original photograph, albumen print, 21,23 x 27,3 cm. Photograph No 413. 600,00



71 HONG KONG. Panorama view of Hong Kong, 1964. Belga Press, 1964. Original photograph, silverprint, 13 x 18,2 cm (29-1-1964) 30,00



72 HONG KONG. Panorama of Hong Kong Bay in two parts. ca. 1880. Original photograph, albumen print, 20,7 x 54,4 cm on mount. 960,00



73 HONG KONG. Sampan in Harbour. ca. 1900. Original photograph, cabinet-card, silver print, 8 x 10,1 cm, on mount. 30,00



74 HONG KONG. Streetscene. ca. 1900. Original photograph, cabinet-card, silver print, 8 x 10,2 cm, on mount. 48,00



75 HONG KONG. Two farmers with a cart and a dead swine. ca. 1890. Original photograph, albumen print, 22 x 28 cm, 360,00



76 HONG KONG. Victoria. ca. 1890. Original photograph, albumen print, 19,5 x 26,2 cm,
360,00



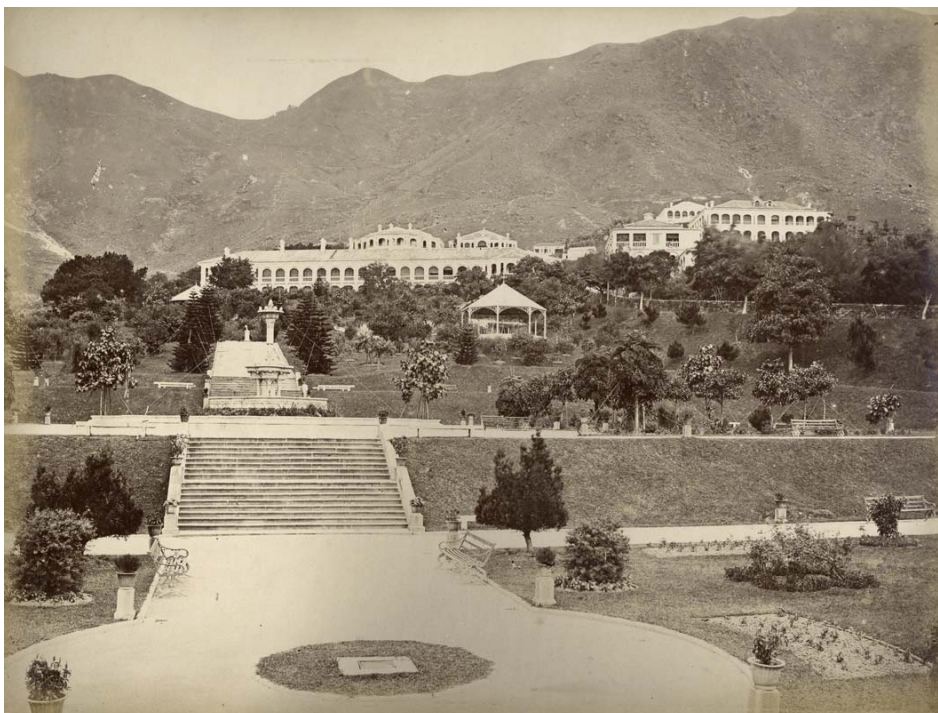
77 HONG KONG. Victoria and Bay. ca. 1890. Original photograph, albumen print, 19,3 x
26,7 cm,
360,00



78 HONG KONG. Victoria Road. ca. 1890. Original photograph, albumen print, 19,5 x 26,2 cm, 420,00



79 HONG KONG. View of the Public Gardens with Albany and the Victoria Peak in the back ground, with the building in centre of the Gardens is the Ban I-house presented by the Parsee community. ca. 1870. Original photograph, albumen print, 22,7 x 28,3 cm. Photograph No 453. 360,00



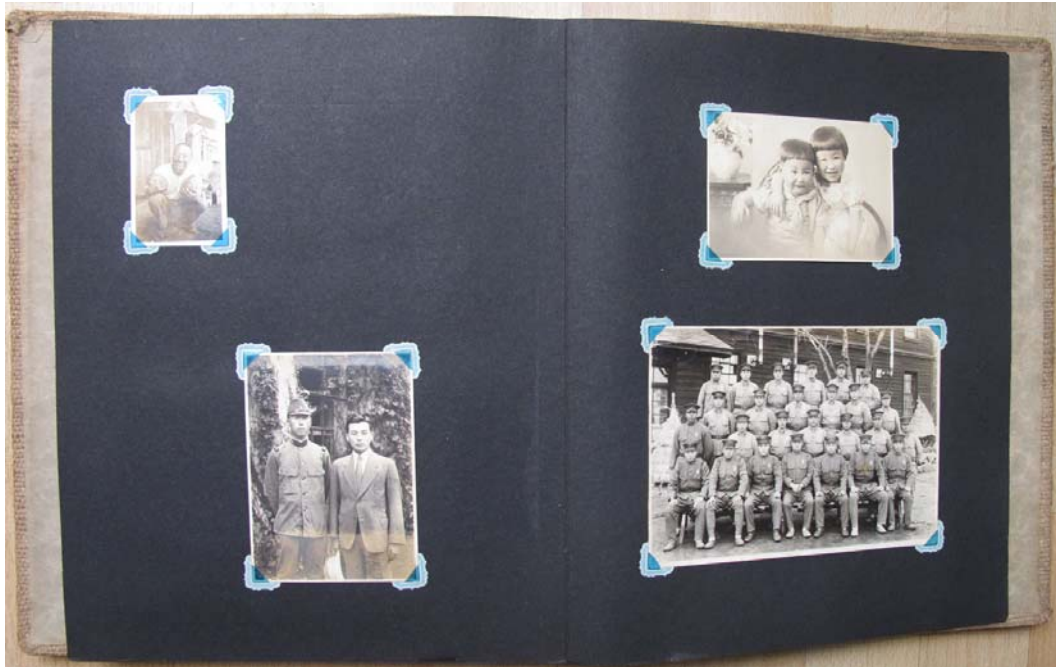
80 HUYGENS, Stan. Het Plein van de Hemelse Vrede, Peking, 1988. Amsterdam, De Telegraaf, 1988. 1st Edition 24 x 29,9 cm Original photograph, silver print. Publishers stamp on the back. Very nice impression. 50,00



81 HUYGENS, Stan. On the banks of the river Xiang, Changsha 1988. Amsterdam, De Telegraaf, 1988. 1st Edition 24 x 29,9 cm Original photograph, silver print. Publishers stamp on the back. Very nice impression. 35,00



82 JAPAN-CHINA-MANCHURIA. Photoalbum with 111 original photographs of Japanese soldiers and some inhabitants in China and Manchuria during the WO II, in daily life, the last 23 images are from portraits of soldiers and family and group portraits. Japan, 1937-1945. Original photographs, 111 silverprints, ca.: 11 x 16 cm, 8,5 x 14 cm, 7 x 11 cm in 4to cloth album (Loose in binding). Impressive documentation from this period. Japan Army Infantry. 1.080,00



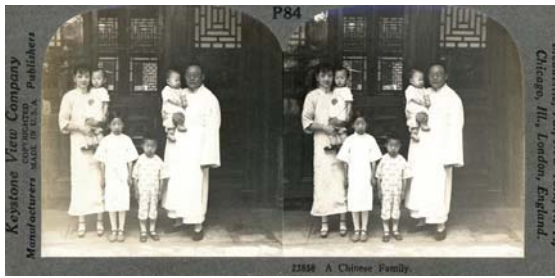
83 KEYSTONE. The Chukiang River with its Enormous Floating Population, Canton, China. Meadville, New York, a.o., Keystone View Company, ca. 1895-1900. Original photograph, stereo-photograph, silver print, 9 x 17,2 cm, photograph no T 534, V 23922. T. 42,00



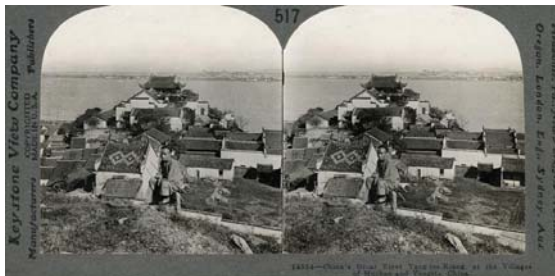
84 KEYSTONE. The Canal between the Bund of Canton and the Island of Shameen, China. Meadville, New York, a.o., Keystone View Company, ca. 1895-1900. Original photograph, stereo-photograph, silver print, 9 x 17,3 cm, photograph no 23870, 995. 36,00



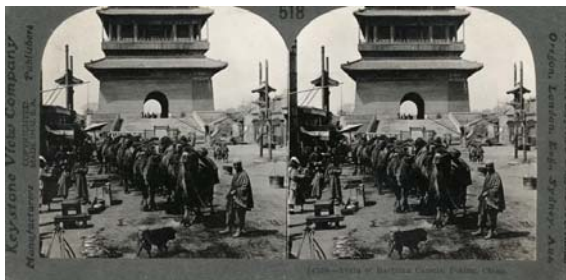
85 KEYSTONE. A Chinese Family. Meadville, New York, a.o., Keystone View Company, ca. 1895-1900. Original photograph, stereo-photograph, silver print, 9 x 17,3 cm, photograph no 23858, P 84. 30,00



86 KEYSTONE. China's Great River Yang-tse-Kiang at the Village of Muchan and Yougste, China. Meadville, New York, a.o., Keystone View Company, ca. 1895-1900. Original photograph, stereo-photograph, silver print, 9 x 17,3 cm, photograph no 14554, 517. 30,00



87 KEYSTONE. Train of Bactrian Camels, Peking, China. Meadville, New York, a.o., Keystone View Company, ca. 1895-1900. Original photograph, stereo-photograph, silver print, 9 x 17,3 cm, photograph no 14558, 518. 30,00



88 KEYSTONE. The Bund and the Whangpoo River, Shanghai, China. Meadville, New York, a.o., Keystone View Company, ca. 1895-1900. Original photograph, stereo-photograph, silver print, 9 x 17,3 cm, photograph no 978-12018. 36,00



89 KEYSTONE. Chinese Boys plowing near Port Arthur. Meadville, New York, a.o., Keystone View Company, ca. 1895-1900. Original photograph, stereo-photograph, silver print, 9 x 17,3 cm, photograph no 522-6631. 30,00



90 KEYSTONE. Interior of a Joss House in China. Meadville, New York, a.o., Keystone View Company, ca. 1895-1900. Original photograph, stereo-photograph, silver print, 9 x 17,3 cm, photograph no 976-12039. 30,00



91 KEYSTONE. A Home Scene in Manchukuo. Meadville, New York, a.o., Keystone View Company, ca. 1895-1900. Original photograph, stereo-photograph, silver print, 9 x 17,3 cm, photograph no 958-23878. 36,00



92 KEYSTONE. The Great Wall of China. Meadville, New York, a.o., Keystone View Company, ca. 1895-1900. Original photograph, stereo-photograph, silver print, 9 x 17,3 cm, photograph no 524-14555. 36,00



93 KEYSTONE. An Open-Air Restaurant Peking. Meadville, New York, a.o., Keystone View Company, ca. 1895-1900. Original photograph, stereo-photograph, silver print, 9 x 17,3 cm, photograph no 519-14557. 42,00



94 KEYSTONE. Chinese School Children and Teacher, Peking, China. Meadville, New York, a.o., Keystone View Company, ca. 1895-1900. Original photograph, stereo-photograph, silver print, 9 x 17,3 cm, photograph no 520-12007. 42,00



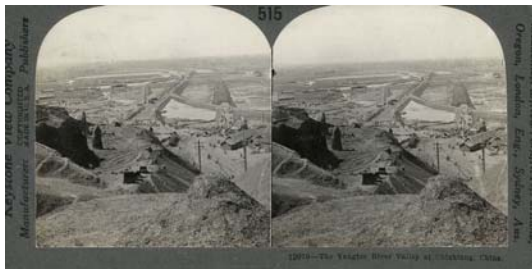
95 KEYSTONE. Road making, Nanking, China. Meadville, New York, a.o., Keystone View Company, ca. 1895-1900. Original photograph, stereo-photograph, silver print, 9 x 17,3 cm, photograph no 516-12076. 30,00



96 KEYSTONE. Store of Rich Chinese Tea Merchant. Port Arthur, North China. Meadville, New York, a.o., Keystone View Company, ca. 1895-1900. Original photograph, stereo-photograph, silver print, 9 x 17,3 cm, photograph no 521-14517. 36,00



97 KEYSTONE. The Yangtze River, Chinkiang, China. Meadville, New York, a.o., Keystone View Company, ca. 1895-1900. Original photograph, stereo-photograph, silver print, 9 x 17,3 cm, photograph no 515-12079. 36,00



98 KEYSTONE. On the River, Canton, China. Meadville, New York, a.o., Keystone View Company, ca. 1895-1900. Original photograph, stereo-photograph, silver print, 9 x 17,3 cm, photograph no 514-14559. 36,00



99 KEYSTONE. Queen's Road, the Busy Street of Hongkong, China. Meadville, New York, a.o., Keystone View Company, ca. 1895-1900. Original photograph, stereo-photograph, silver print, 9 x 17,3 cm, photograph no 513-12052. 42,00



100 KIAUTCHOU. Ship in Kiautschou-harbour. ca. 1900-1910. Original photograph, silver print, 11 x 15,5 cm. 42,00



101 MANCHURIA. A typical train station in Manchuria. 1900. Original photograph, gelatine silver print, 8,7 x 8,3 cm. 36,00



102 MANCHURIA. A train station in Manchuria. 1900. Original photograph, gelatine silver print, 8,7 x 8,3 cm. 36,00



103 MANCHURIA. People waiting on a train station. 1900. Original photograph, gelatine silver print, 8,6 x 8,3 cm. 36,00



104 MANCHURIA. Railway station in Manchuria. 1900. Original photograph, gelatine silver print, 8,6 x 8,2 cm. 42,00



105 MANCHURIA. Provision cellars Manchuria. 1900. Original photograph, gelatine silver print, 8,6 x 8,3 cm. 36,00



106 MANCHURIA. Railway-Station in Manchuia, with passengers and locals. 1900. Original photograph, gelatine silver print, 8,7 x 8,3 cm. 42,00



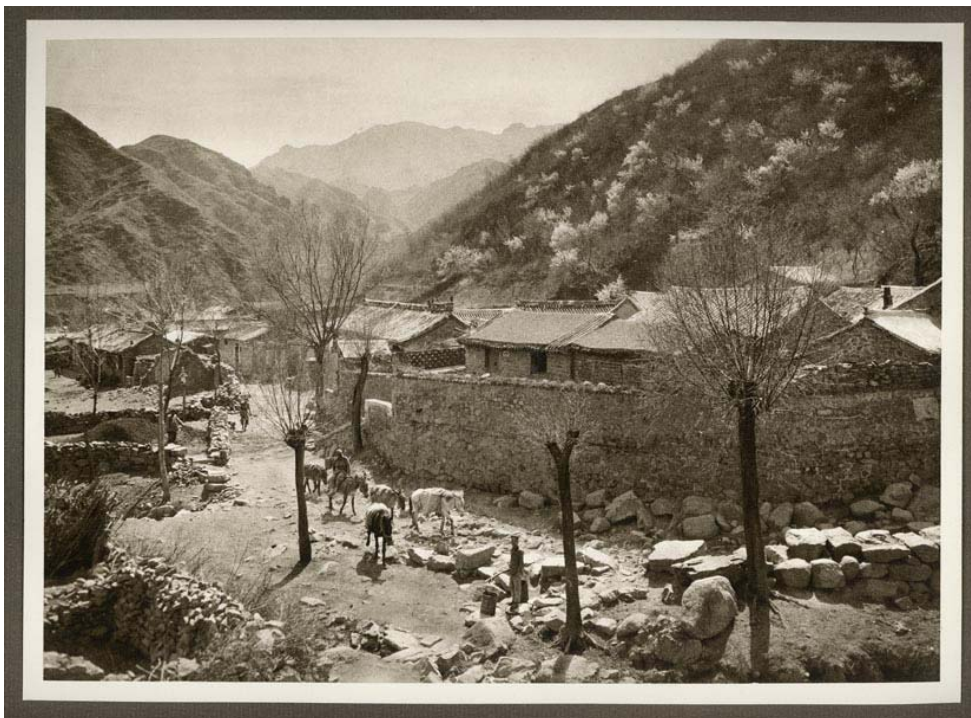
107 MENNIE, Donald. Approach to the Temple of Heaven. Shanghai, 1922. Original vintage gravure (Vandyck Photogravure), 17,2 x 26,5 cm, reverse is blank, and it is attached to original paper mount. - From the album: The Pageant of Peking, Shanghai, 1922, No. 7. 120,00

¶ Mennie, Donald (1899-1941) .



108 MENNIE, Donald. Ch'ing Lung Ch'iao - Nank'ou Pass. Shanghai, 1922. Original vintage gravure (Vandyck Photogravure), 19 x 26,3 cm, reverse is blank, and it is attached to original paper mount. - From the album: The Pageant of Peking, Shanghai, 1922, No. 6. 120,00

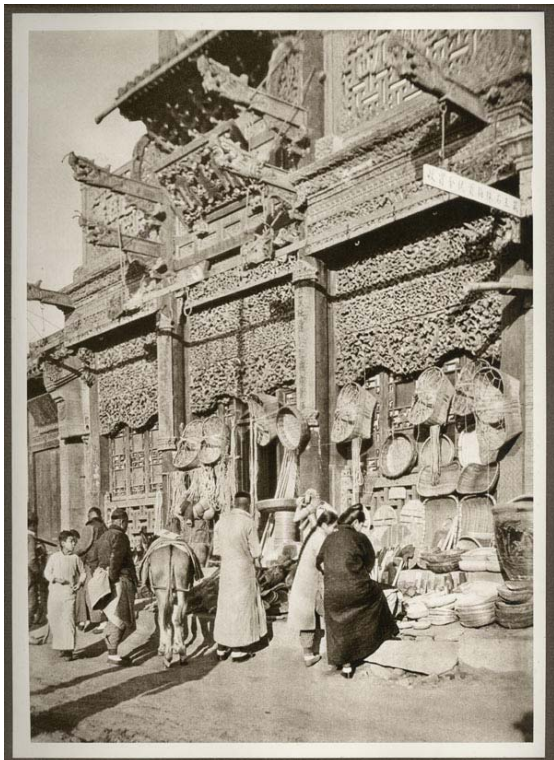
¶ Mennie, Donald (1899-1941) .



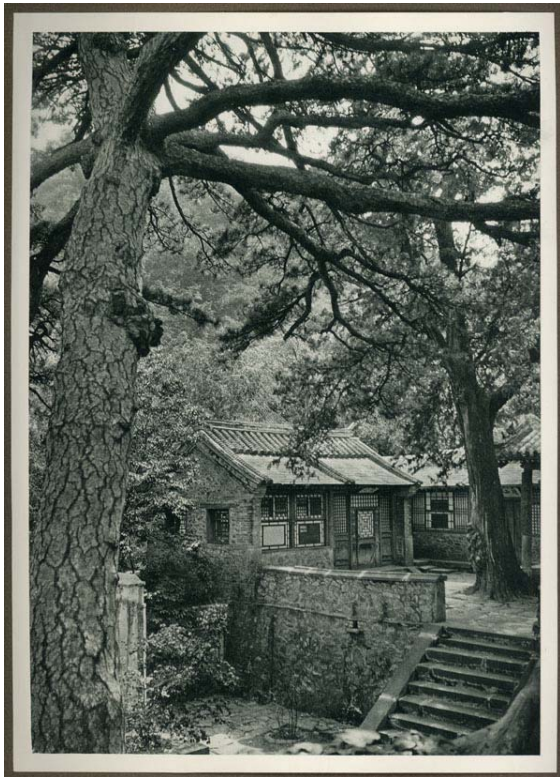
109 MENNIE, Donald. P'ai Yün Tien. Shanghai, 1922. Original vintage gravure (Vandyck Photogravure), 24,6 x 19 cm, reverse is blank, and it is attached to original paper mount. - From the album: The Pageant of Peking, Shanghai, 1922, No. 7. 120,00
¶ Mennie, Donald (1899-1941) .



110 MENNIE, Donald. The Utility Shop. Shanghai, 1922. Original vintage gravure (Vandyck Photogravure), 26,5 x 19 cm, reverse is blank, and it is attached to original paper mount. - From the album: The Pageant of Peking, Shanghai, 1922, No. 9. 130,00
¶ Mennie, Donald (1899-1941) .



111 MENNIE, Donald. Ling Wang T'ang. Shanghai, 1922. Original vintage gravure (Vandyck Photogravure), 26,6 x 19 cm, reverse is blank, and it is attached to original paper mount. - From the album: The Pageant of Peking, Shanghai, 1922, No. 10. 130,00
¶ Mennie, Donald (1899-1941) .



112 MENNIE, Donald. Chieh T'ai Ssu - Western Hills. Shanghai, 1922. Original vintage gravure (Vandyck Photogravure), 22,6 x 19 cm, reverse is blank, and it is attached to original paper mount. - Taken out from the album: The Pageant of Peking, Shanghai, 1922, No. 11. 130,00
¶ Mennie, Donald (1899-1941) .



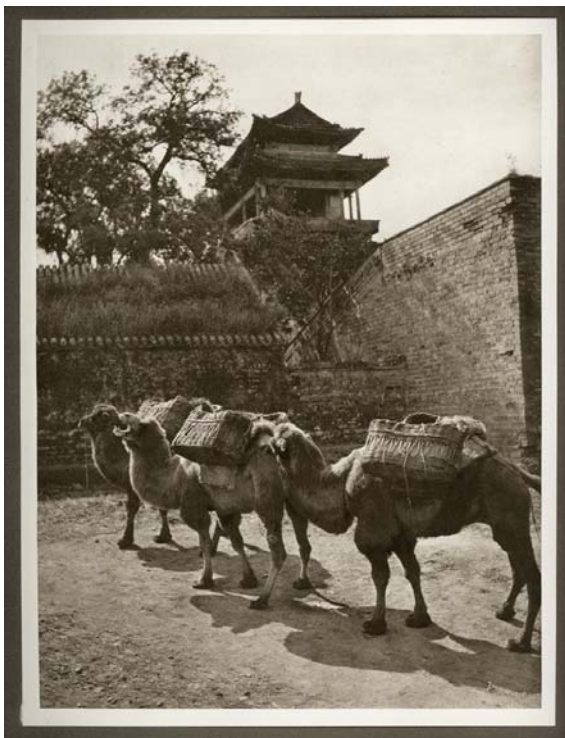
113 MENNIE, Donald. Courtyard of the Lama Temple. Shanghai, 1922. Original vintage gravure (Vandyck Photogravure), 19,3 x 25,7 cm, reverse is blank, and it is attached to original paper mount. - From the album: The Pageant of Peking, Shanghai, 1922, No. XII. 120,00

¶ Mennie, Donald (1899-1941).



114 MENNIE, Donald. Camel Study. Shanghai, 1922. Original vintage gravure (Vandyck Photogravure), 25,1 x 19 cm, reverse is blank, and it is attached to original paper mount. - From the album: The Pageant of Peking, Shanghai, 1922, No. XIII. 120,00

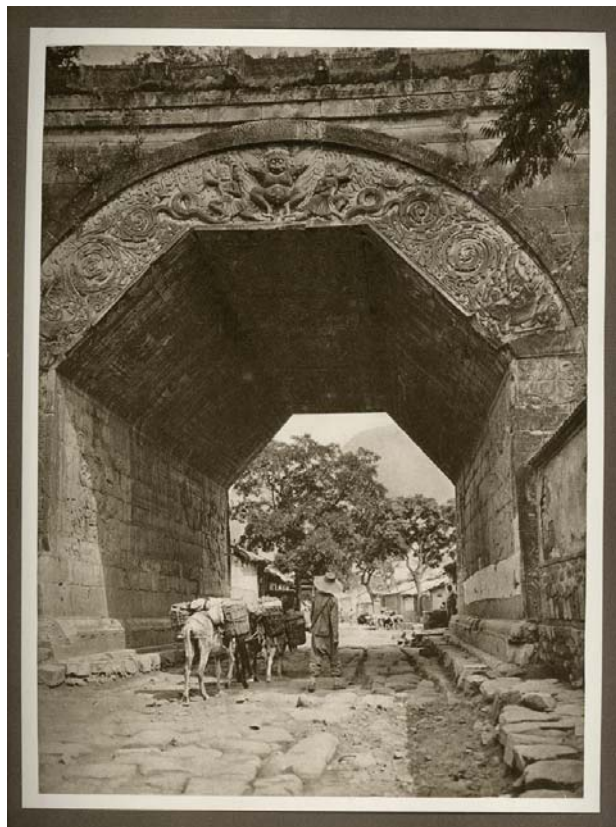
¶ Mennie, Donald (1899-1941).



115 MENNIE, Donald. Marble Gate at Chü Yung Kuan. Shanghai, 1922. Original vintage gravure (Vandyck Photogravure), 25,6 x 19,9 cm, reverse is blank, and it is attached to original paper mount. - From the album: The Pageant of Peking, Shanghai, 1922, No. XIV.

132,00

¶ Mennie, Donald (1899-1941).



116 MENNIE, Donald. Along the Sunlit Dusty Street (Near the Yung Ting Môn). Shanghai, 1922. Original vintage gravure (Vandyck Photogravure), 16,8 x 26,6 cm, reverse is blank, and it is attached to original paper mount. - From the album: The Pageant of Peking, Shanghai, 1922, No. XV.

132,00

¶ Mennie, Donald (1899-1941).



117 MENNIE, Donald. The Long Gallery - Summer Palace. Shanghai, 1922. Original vintage gravure (Vandyck Photogravure), 26,7 x 18,8 cm, reverse is blank, and it is attached to original paper mount. - From the album: The Pageant of Peking, Shanghai, 1922, No. XVI. 132,00

¶ Mennie, Donald (1899-1941).



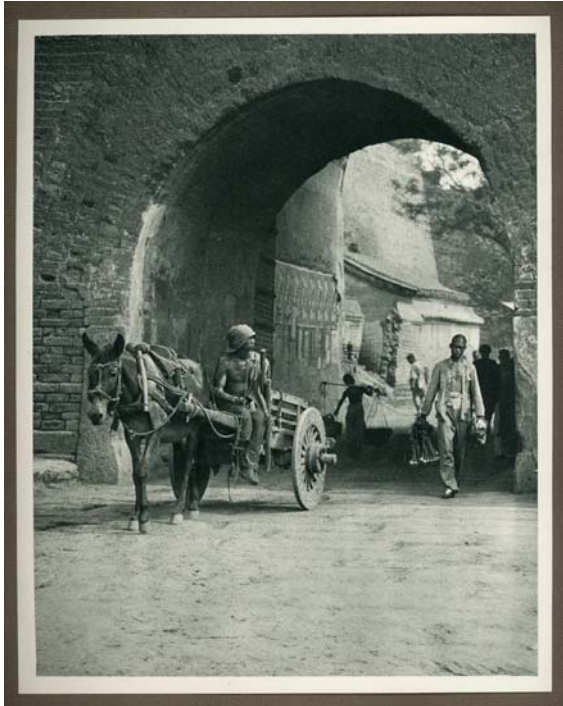
118 MENNIE, Donald. The Mid-Day Meal. Shanghai, 1922. Original vintage gravure (Vandyck Photogravure), 20,4 x 22,8 cm, reverse is blank, and it is attached to original paper mount. - From the album: The Pageant of Peking, Shanghai, 1922, No. XVII. 132,00

¶ Mennie, Donald (1899-1941).



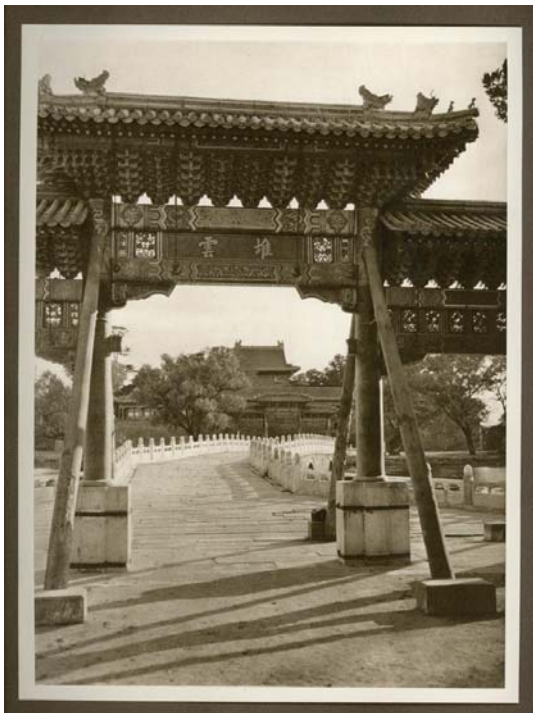
119 MENNIE, Donald. Through the P'ing Tsê Mên. Shanghai, 1922. Original vintage gravure (Vandyck Photogravure), 24 x 18,9 cm, reverse is blank, and it is attached to original paper mount. - From the album: The Pageant of Peking, Shanghai, 1922, No. XVIII. 144,00

¶ Mennie, Donald (1899-1941).



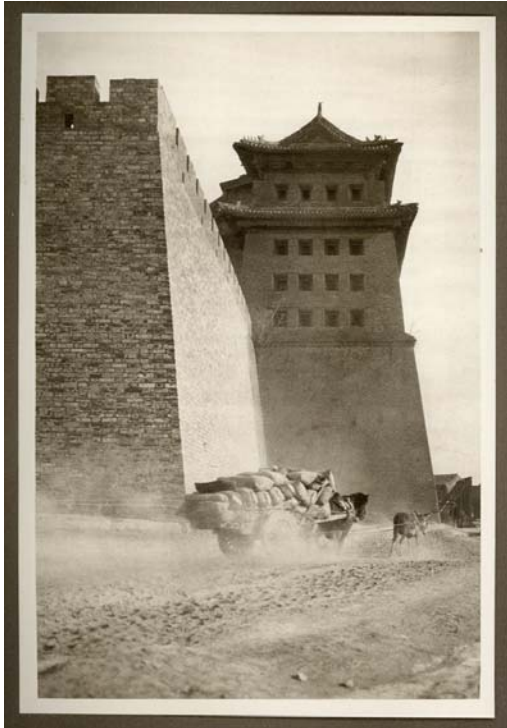
120 MENNIE, Donald. P'ai Lou and Marble Bridge - Pei Hai. Shanghai, 1922. Original vintage gravure (Vandyck Photogravure), 26 x 19,2 cm, reverse is blank, and it is attached to original paper mount. - From the album: The Pageant of Peking, Shanghai, 1922, No. XIX. 144,00

¶ Mennie, Donald (1899-1941).



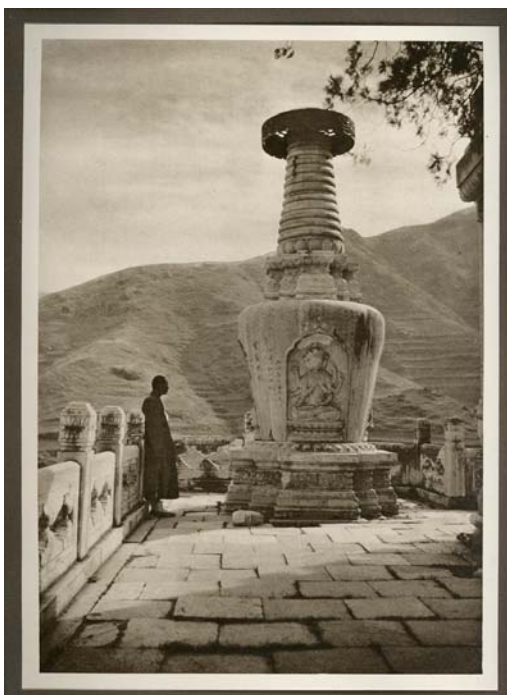
121 MENNIE, Donald. By the Hsi Chihh Mên. Shanghai, 1922. Original vintage gravure (Vandyck Photogravure), 26,3 x 17,2 cm, reverse is blank, and it is attached to original paper mount. - From the album: The Pageant of Peking, Shanghai, 1922, No. XX. 120,00

¶ Mennie, Donald (1899-1941).



122 MENNIE, Donald. Marble Sentinel - Pi Yün Ssu. Shanghai, 1922. Original vintage gravure (Van.Dyck Photogravure), 26,5 x 18,9 cm, reverse is blank, and it is attached to original paper mount. - From the album: The Pageant of Peking, Shanghai, 1922, No. XXI. 132,00

¶ Mennie, Donald (1899-1941).



123 MENNIE, Donald. A Street in the Tartar City. Shanghai, 1922. Original vintage gravure (Van Dyck Photogravure), 20,5 x 22,5 cm, reverse is blank, and it is attached to original paper mount. - From the album: The Pageant of Peking, Shanghai, 1922, No. XXII.

144,00

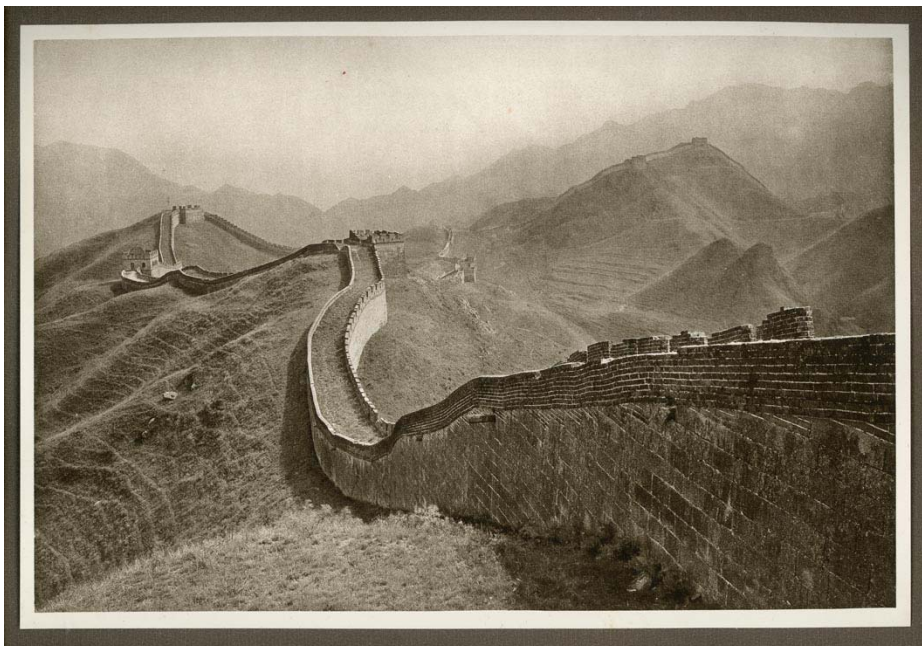
¶ Mennie, Donald (1899-1941).



124 MENNIE, Donald. The Great Wall at Nan-Kou. Shanghai, 1922. Original vintage gravure (Van Dyck Photogravure), 18 x 26,6 cm, reverse is blank, and it is attached to original paper mount. - From the album: The Pageant of Peking, Shanghai, 1922, No. XXIII.

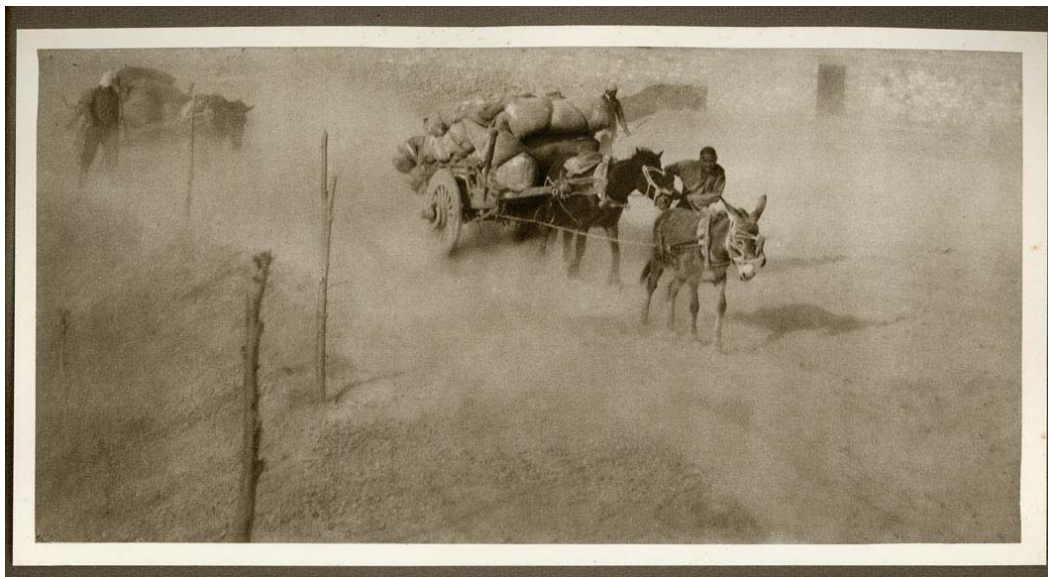
132,00

¶ Mennie, Donald (1899-1941).



125 MENNIE, Donald. "By the North Wall. The Wind blows full of Sand. Shanghai, 1922. Original vintage gravure (Van Dyck Photogravure), 14,1 x 28,9 cm, reverse is blank, and it is attached to original paper mount. - From the album: The Pageant of Peking, Shanghai, 1922, No. XXIV. 120,00

¶ Mennie, Donald (1899-1941).



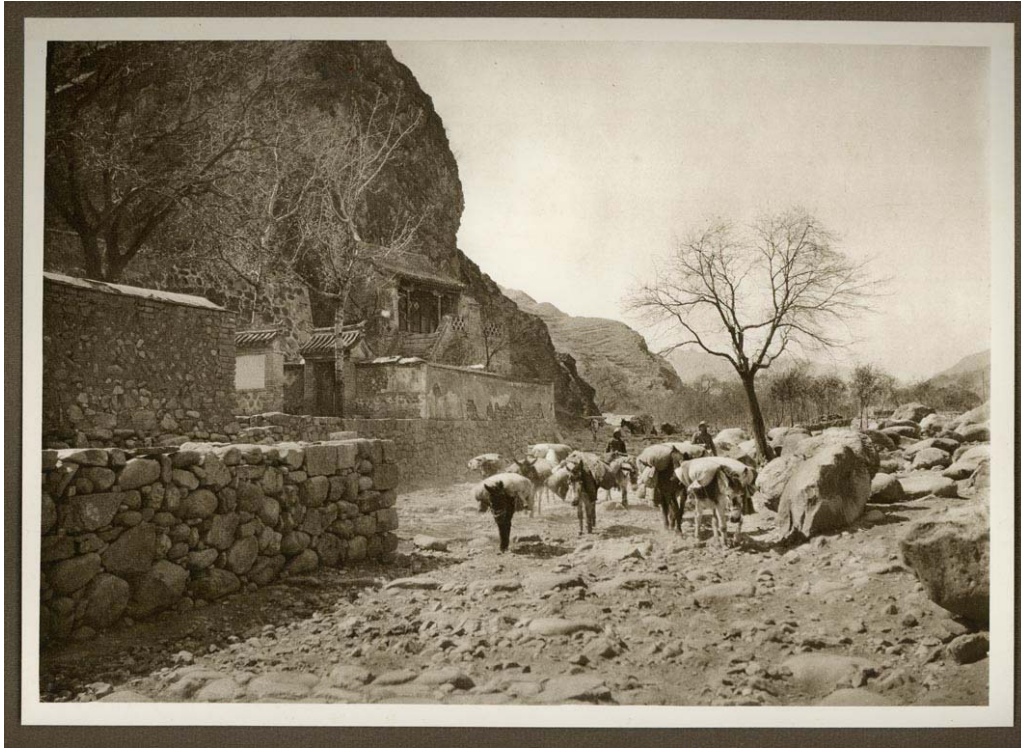
126 MENNIE, Donald. Within the Pei Hai - North Lake. Shanghai, 1922. Original vintage gravure (Van Dyck Photogravure), 18,2 x 26,7 cm, reverse is blank, and it is attached to original paper mount. - From the album: The Pageant of Peking, Shanghai, 1922, No. XXV. 132,00

¶ Mennie, Donald (1899-1941).

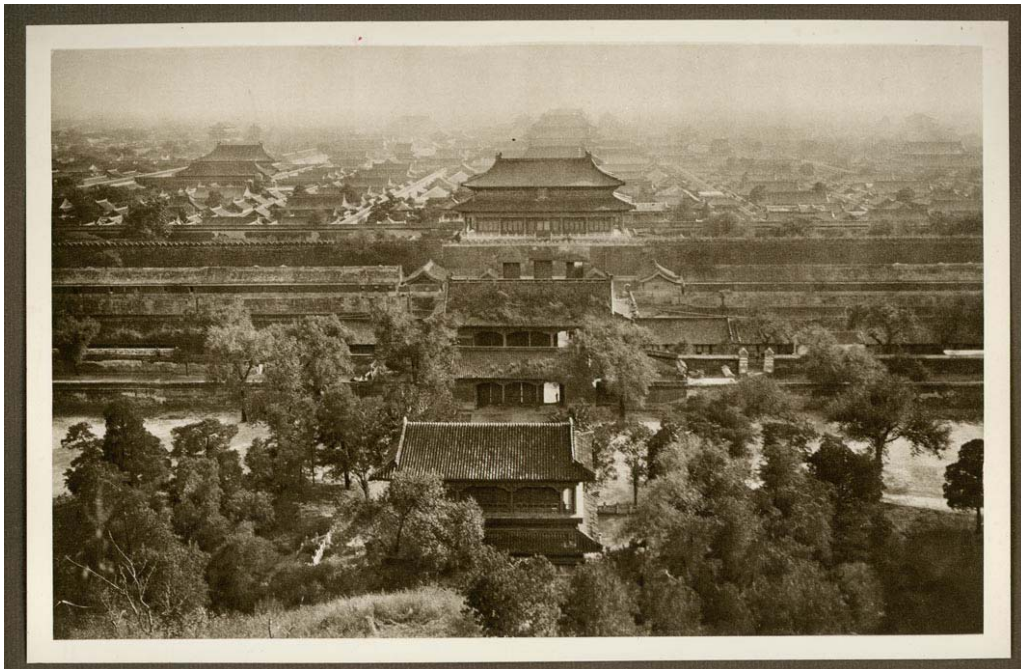


127 MENNIE, Donald. The Rocky Way - Nan-K'ou Pass. Shanghai, 1922. Original vintage gravure (Van Dyck Photogravure), 18,6 x 26,6 cm, reverse is blank, and it is attached to original paper mount. - From the album: The Pageant of Peking, Shanghai, 1922, No. XXVI. 132,00

¶ Mennie, Donald (1899-1941).



128 MENNIE, Donald. The forbidden City. Shanghai, 1922. Original vintage gravure (Van Dyck Photogravure), 16,9 x 26,4 cm, reverse is blank, and it is attached to original paper mount. - From the album: The Pageant of Peking, Shanghai, 1922, No. XXVII. 144,00
¶ Mennie, Donald (1899-1941).



129 MENNIE, Donald. The Road to the Western Hills. Shanghai, 1922. Original vintage gravure (Van Dyck Photogravure), 19,2 x 26,6 cm, reverse is blank, and it is attached to original paper mount. - From the album: The Pageant of Peking, Shanghai, 1922, No. XXVIII. 132,00

¶ Mennie, Donald (1899-1941).

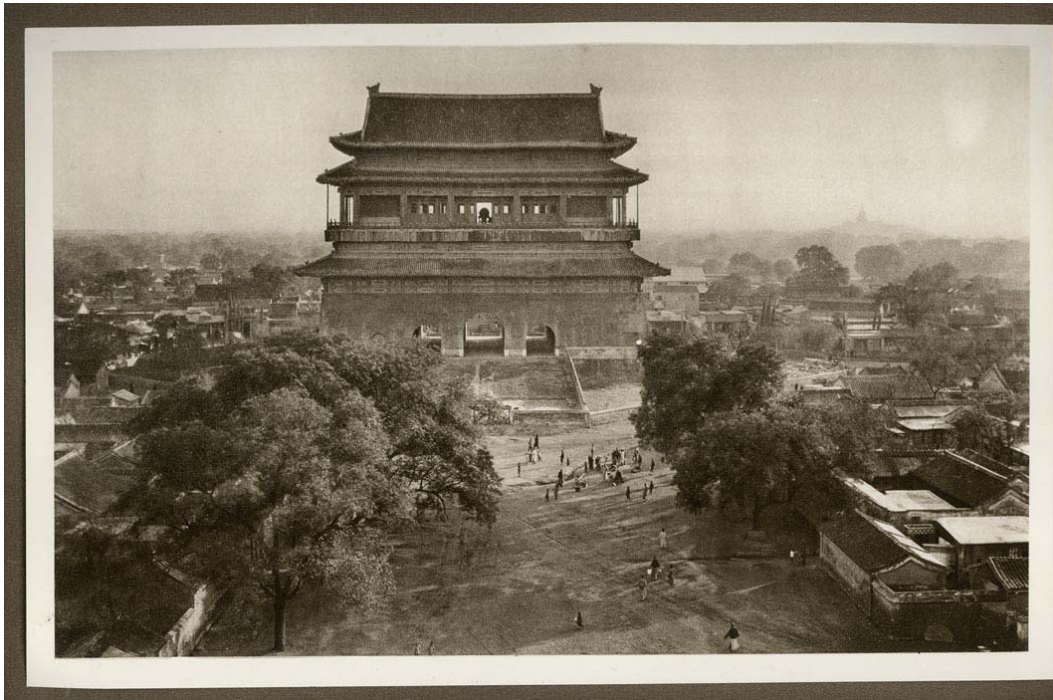


130 MENNIE, Donald. A Peking Shop. Shanghai, 1922. Original vintage gravure (Van Dyck Photogravure), 22,6 x 19,1 cm, reverse is blank, and it is attached to original paper mount. - From the album: The Pageant of Peking, Shanghai, 1922, No. XXIX. 144,00

¶ Mennie, Donald (1899-1941).



131 MENNIE, Donald. The Drum Tower. Shanghai, 1922. Original vintage gravure (Van Dyck Photogravure), 16,8 x 26,6 cm, reverse is blank, and it is attached to original paper mount. - From the album: The Pageant of Peking, Shanghai, 1922, No. XXX. 144,00
¶ Mennie, Donald (1899-1941).

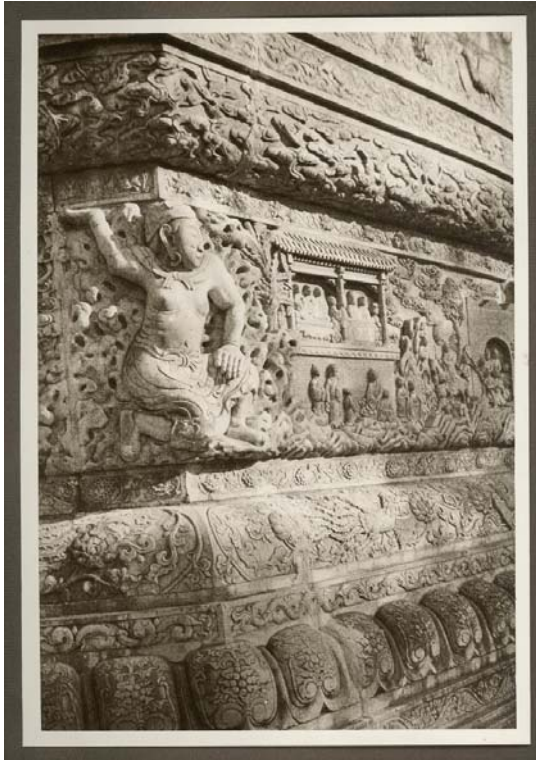


132 MENNIE, Donald. Evening in the Streets. Shanghai, 1922. Original vintage gravure (Van Dyck Photogravure), 16,6 x 26,7 cm, reverse is blank, and it is attached to original paper mount. - From the album: The Pageant of Peking, Shanghai, 1922, No. XXXI. 144,00
¶ Mennie, Donald (1899-1941).



133 MENNIE, Donald. The sculptured Base of the Stupa-Yellow Temple. Shanghai, 1922. Original vintage gravure (Van Dyck Photogravure), 26,7 x 18,3 cm, reverse is blank, and it is attached to original paper mount. - From the album: The Pageant of Peking, Shanghai, 1922, No. XXXII. 120,00

¶ Mennie, Donald (1899-1941).



134 MENNIE, Donald. The Ch'ien Mên. Shanghai, 1922. Original vintage gravure (Van Dyck Photogravure), 23,2 x 20,4 cm, reverse is blank, and it is attached to original paper mount. - From the album: The Pageant of Peking, Shanghai, 1922, No. XXXIII. 144,00

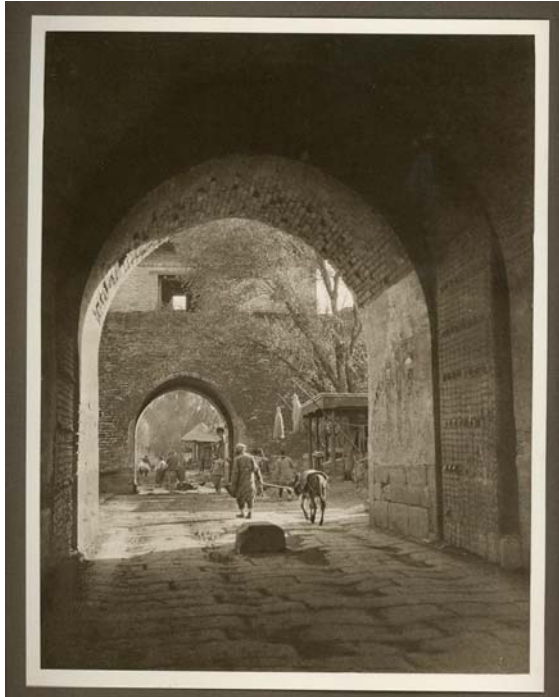
¶ Mennie, Donald (1899-1941).



135 MENNIE, Donald. A Gateway in the Chinese City. Shanghai, 1922. Original vintage gravure (Van Dyck Photogravure), 24,6 x 19 cm, reverse is blank, and it is attached to original paper mount. - From the album: The Pageant of Peking, Shanghai, 1922, No. XXXIV.

132,00

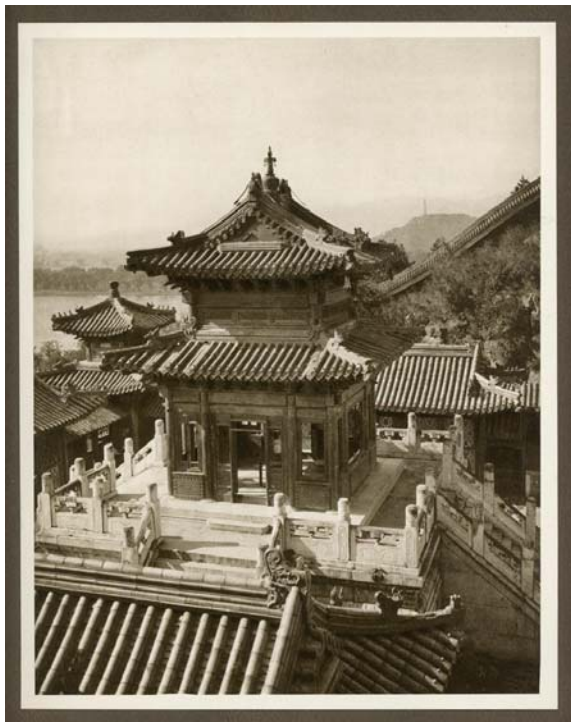
¶ Mennie, Donald (1899-1941).



136 MENNIE, Donald. Bronze Pavilion - Summer Palace. Shanghai, 1922. Original vintage gravure (Van Dyck Photogravure), 24,5 x 19 cm, reverse is blank, and it is attached to original paper mount. - From the album: The Pageant of Peking, Shanghai, 1922, No. XXXV.

132,00

¶ Mennie, Donald (1899-1941).



137 MENNIE, Donald. Bronze A Street in Old Peking. Shanghai, 1922. Original vintage gravure (Van Dyck Photogravure), 15,5 x 27,6 cm, reverse is blank, and it is attached to original paper mount. - From the album: The Pageant of Peking, Shanghai, 1922, No. XXXVI.

156,00

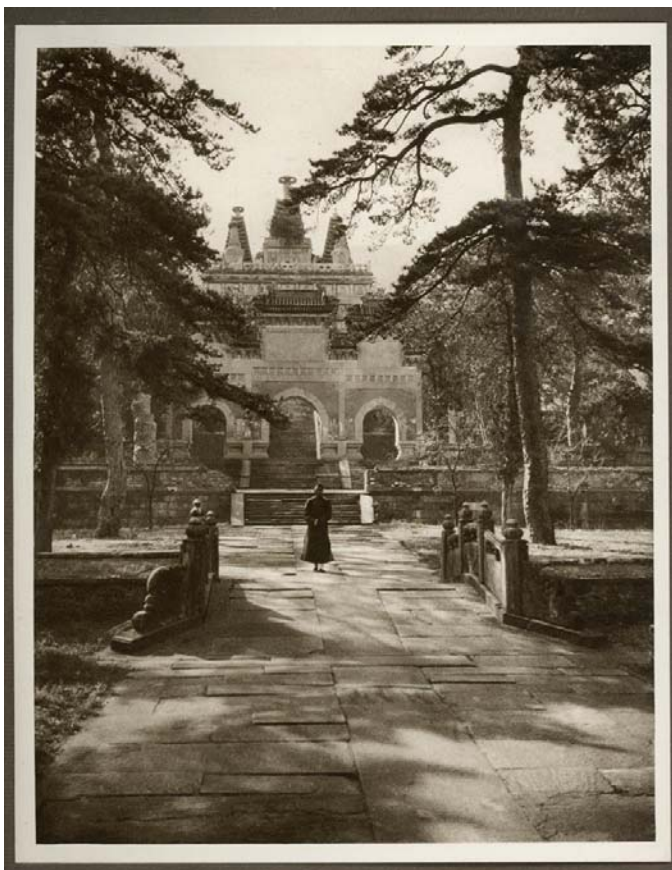
¶ Mennie, Donald (1899-1941).



138 MENNIE, Donald. Pi Yün Ssu. Shanghai, 1922. Original vintage gravure (Van Dyck Photogravure), 24,5 x 19,3 cm, reverse is blank, and it is attached to original paper mount. - From the album: The Pageant of Peking, Shanghai, 1922, No. XXXVII.

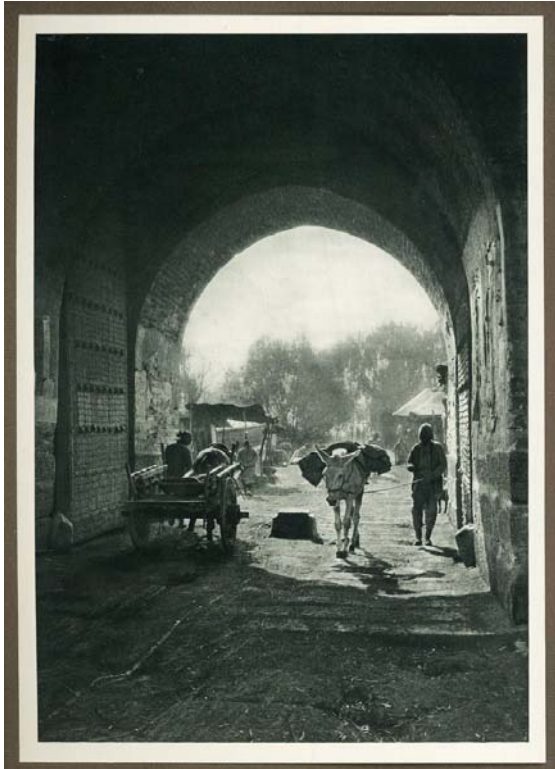
132,00

¶ Mennie, Donald (1899-1941).



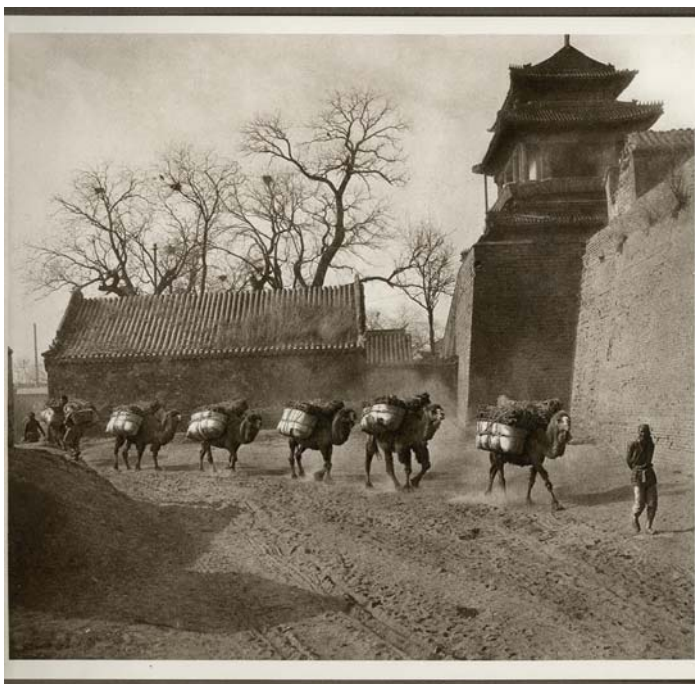
139 MENNIE, Donald. Through the Nan Hsi Mên. Shanghai, 1922. Original vintage gravure (Van Dyck Photogravure), 26,6 x 18,8 cm, reverse is blank, and it is attached to original paper mount. - From the album: The Pageant of Peking, Shanghai, 1922, No. XXXVIII. 144,00

¶ Mennie, Donald (1899-1941).



140 MENNIE, Donald. On the Long Trail. Shanghai, 1922. Original vintage gravure (Van Dyck Photogravure), 19,1 x 21 cm, reverse is blank, and it is attached to original paper mount. - From the album: The Pageant of Peking, Shanghai, 1922, No. XXXIX. 132,00

¶ Mennie, Donald (1899-1941).

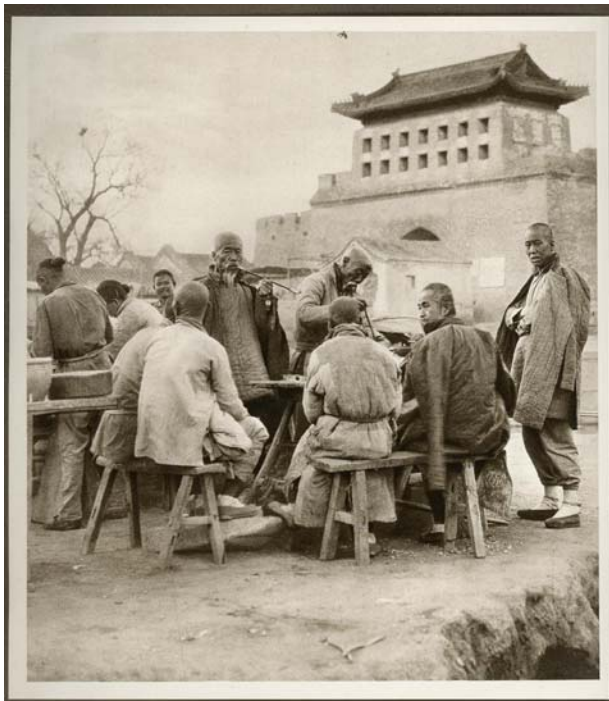


141 MENNIE, Donald. The Hall of Classics. Shanghai, 1922. Original vintage gravure (Van Dyck Photogravure), 25,9 x 19 cm, reverse is blank, and it is attached to original paper mount. - From the album: The Pageant of Peking, Shanghai, 1922, No. XL. 120,00

¶ Mennie, Donald (1899-1941).



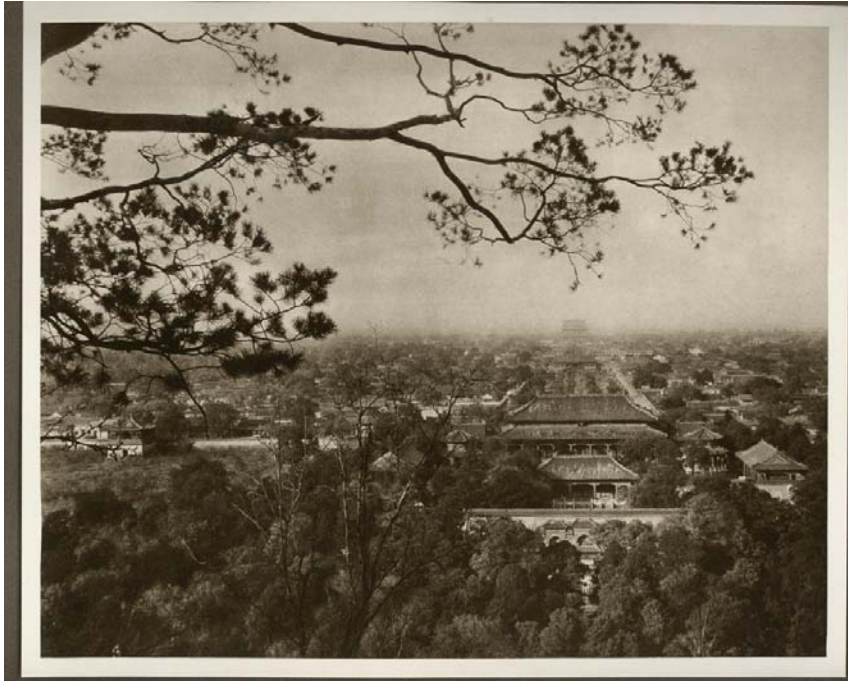
142 MENNIE, Donald. The Hour of Rest. Shanghai, 1922. Original vintage gravure (Van Dyck Photogravure), 22,8 x 20,3 cm, reverse is blank, and it is attached to original paper mount. - From the album: The Pageant of Peking, Shanghai, 1922, No. XLI. 156,00
¶ Mennie, Donald (1899-1941).



143 MENNIE, Donald. Peking from the Coal Hill. Shanghai, 1922. Original vintage gravure (Van Dyck Photogravure), 20,2 x 25 cm, reverse is blank, and it is attached to original paper mount. - From the album: The Pageant of Peking, Shanghai, 1922, No. XLII.

144,00

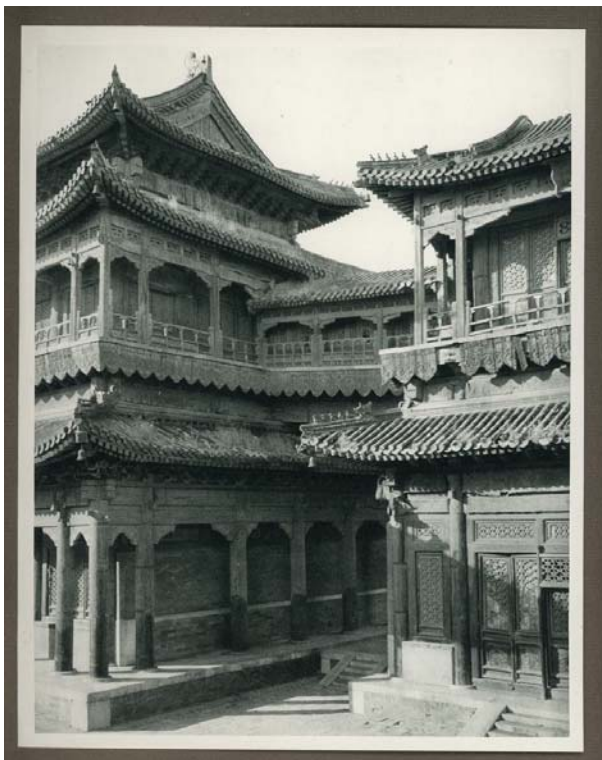
¶ Mennie, Donald (1899-1941).



144 MENNIE, Donald. Lama Temple. Shanghai, 1922. Original vintage gravure (Van Dyck Photogravure), 24,4 x 19,1 cm, reverse is blank, and it is attached to original paper mount. - From the album: The Pageant of Peking, Shanghai, 1922, No. XLIII.

132,00

¶ Mennie, Donald (1899-1941).



145 MENNIE, Donald. The Old Cart Road - Hsi Chih Mên. Shanghai, 1922. Original vintage gravure (Van Dyck Photogravure), 19,2 x 26,6 cm, reverse is blank, and it is attached to original paper mount. - From the album: The Pageant of Peking, Shanghai, 1922, No. XLIV. 144,00

¶ Mennie, Donald (1899-1941).



146 MENNIE, Donald. The Ying T'ai-Terrace of the Ocean. Shanghai, 1922. Original vintage gravure (Van Dyck Photogravure), 19 x 25, cm, reverse is blank, and it is attached to original paper mount. - From the album: The Pageant of Peking, Shanghai, 1922, No. XLV. 132,00

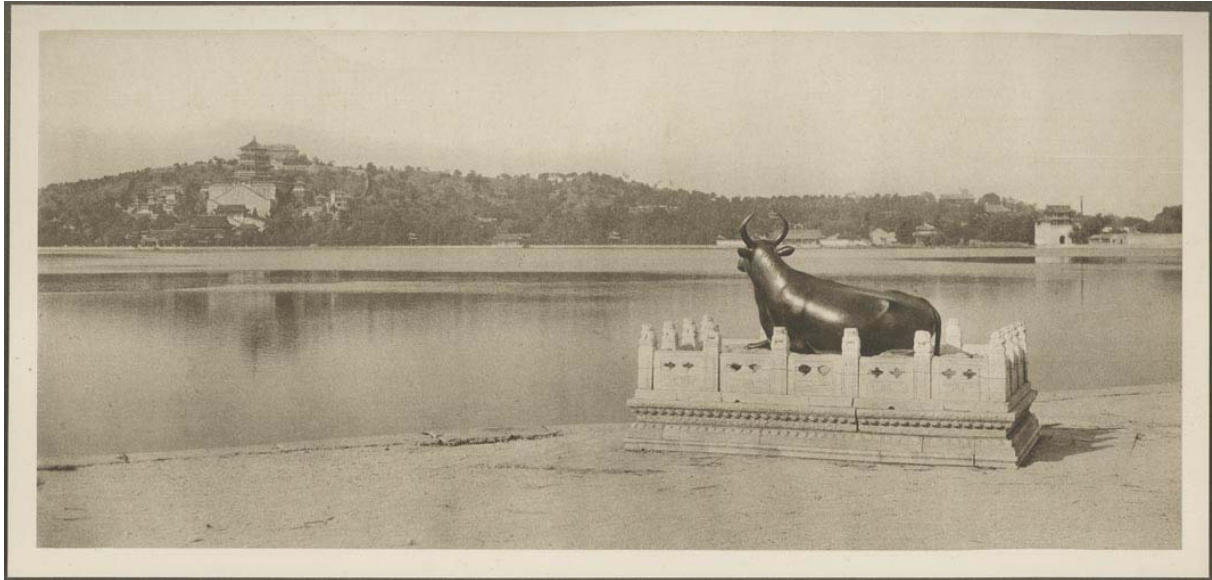
¶ Mennie, Donald (1899-1941).



147 MENNIE, Donald. Bronze Ox - Summer palace. Shanghai, 1922. Original vintage gravure (Van Dyck Photogravure), 12,8 x 27,9, cm, reverse is blank, and it is attached to original paper mount. - From the album: The Pageant of Peking, Shanghai, 1922, No. XLVI.

120,00

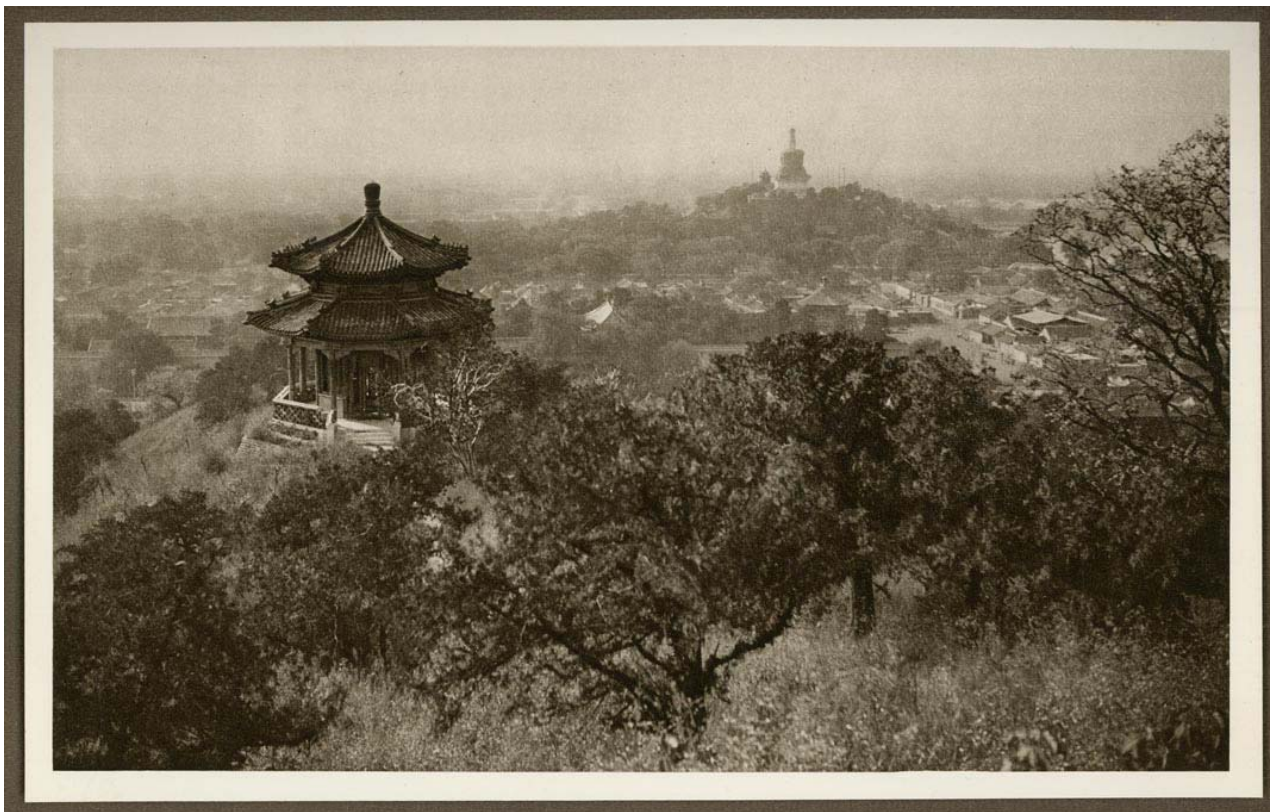
¶ Mennie, Donald (1899-1941).



148 MENNIE, Donald. Coal Hill, looking towards the Winter Palace. Shanghai, 1922. Original vintage gravure (Van Dyck Photogravure), 16,6 x 26,6, cm, reverse is blank, and it is attached to original paper mount. - From the album: The Pageant of Peking, Shanghai, 1922, No. XLVII.

144,00

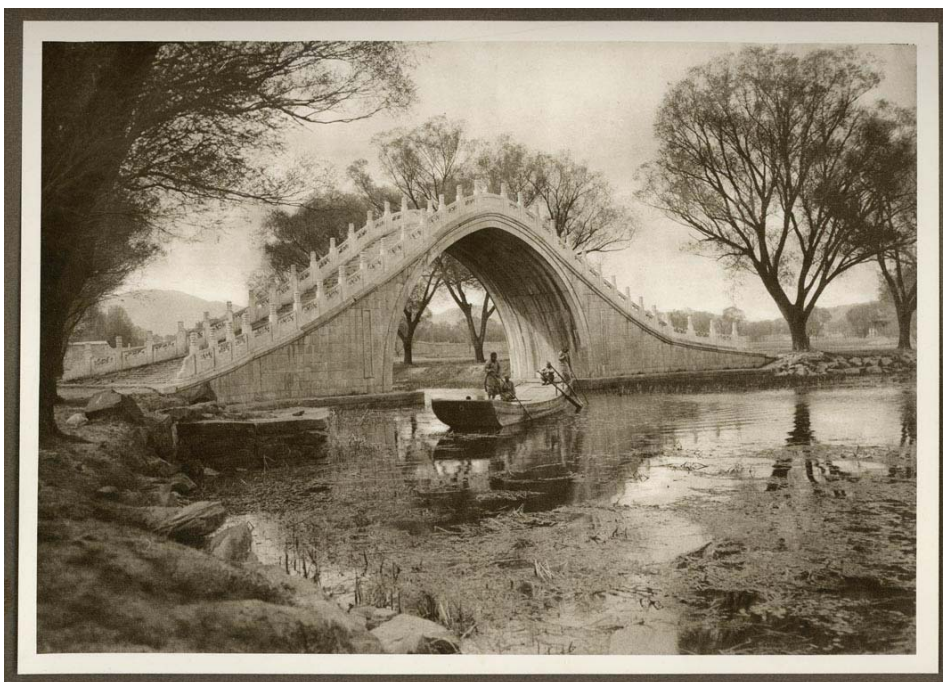
¶ Mennie, Donald (1899-1941).



149 MENNIE, Donald. A Street Corner. Shanghai, 1922. Original vintage gravure (Van Dyck Photogravure), 26,6 x 17,4, cm, reverse is blank, and it is attached to original paper mount. - From the album: The Pageant of Peking, Shanghai, 1922, No. XLVIII. 144,00
¶ Mennie, Donald (1899-1941).



150 MENNIE, Donald. Bridge of the Curved back - Summer Palace. Shanghai, 1922. Original vintage gravure (Van Dyck Photogravure), 18,7 x 26,4, cm, reverse is blank, and it is attached to original paper mount. - From the album: The Pageant of Peking, Shanghai, 1922, No. XLIX. 144,00
¶ Mennie, Donald (1899-1941).



151 MENNIE, Donald. Peking Carts on the Road to the City. Shanghai, 1922. Original vintage gravure (Van Dyck Photogravure), 26,7 x 19,1, cm, reverse is blank, and it is attached to original paper mount. - From the album: The Pageant of Peking, Shanghai, 1922, No. XLX. 132,00

¶ Mennie, Donald (1899-1941).



152 MENNIE, Donald. Stupa in the Yellow Temple. Shanghai, 1922. Original vintage gravure (Van Dyck Photogravure), 25,1 x 19,1, cm, reverse is blank, and it is attached to original paper mount. - From the album: The Pageant of Peking, Shanghai, 1922, No. LI. 120,00

¶ Mennie, Donald (1899-1941).



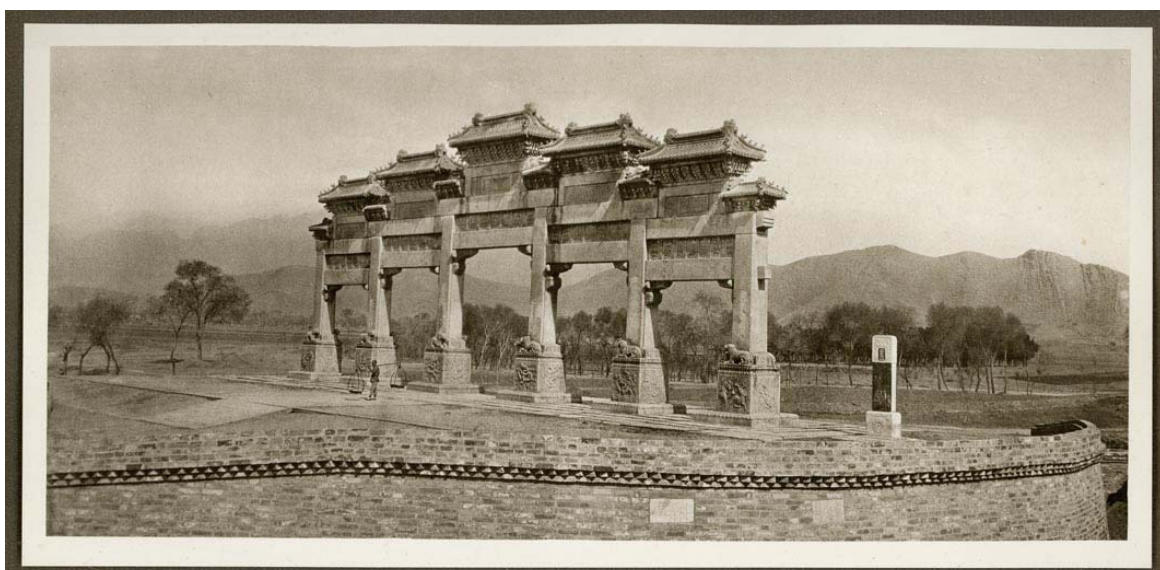
153 MENNIE, Donald. The Temple of Heaven. Shanghai, 1922. Original vintage gravure (Van Dyck Photogravure), 18,7 x 26,5, cm, reverse is blank, and it is attached to original paper mount. - From the album: The Pageant of Peking, Shanghai, 1922, No. LII. 120,00

¶ Mennie, Donald (1899-1941).



154 MENNIE, Donald. The Grand P'ai Lou - Ming Tombs. Shanghai, 1922. Original vintage gravure (Van Dyck Photogravure), 12,5 x 27,5, cm, reverse is blank, and it is attached to original paper mount. - From the album: The Pageant of Peking, Shanghai, 1922, No. LIII. 132,00

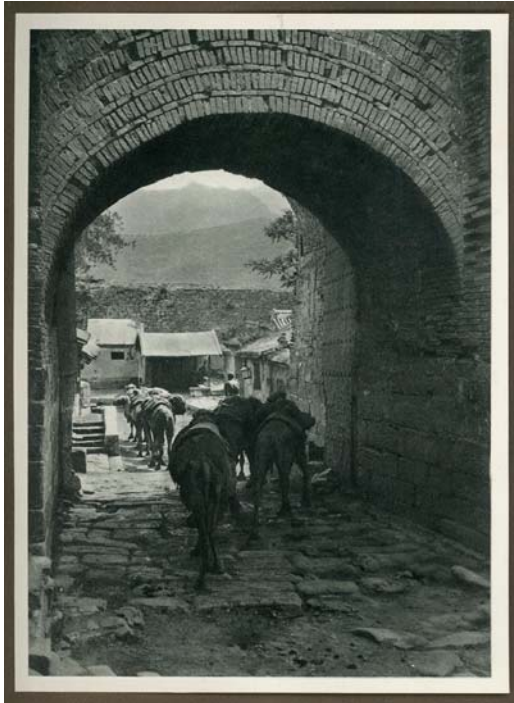
¶ Mennie, Donald (1899-1941).



155 MENNIE, Donald. Gateway at Chü Yung Kuan. Shanghai, 1922. Original vintage gravure (Van Dyck Photogravure), 26,5 x 19,1, cm, reverse is blank, and it is attached to original paper mount. - From the album: The Pageant of Peking, Shanghai, 1922, No. LIV.

132,00

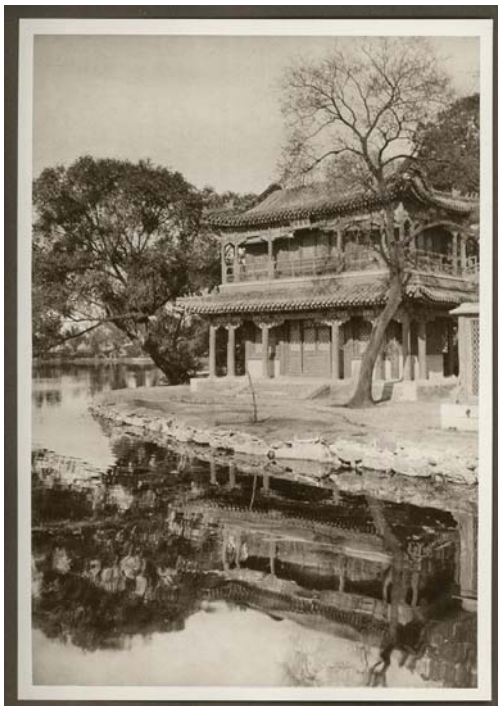
¶ Mennie, Donald (1899-1941).



156 MENNIE, Donald. The Ying T'ai - The Island Palace. Shanghai, 1922. Original vintage gravure (Van Dyck Photogravure), 26,5 x 18,3, cm, reverse is blank, and it is attached to original paper mount. - From the album: The Pageant of Peking, Shanghai, 1922, No. LV.

132,00

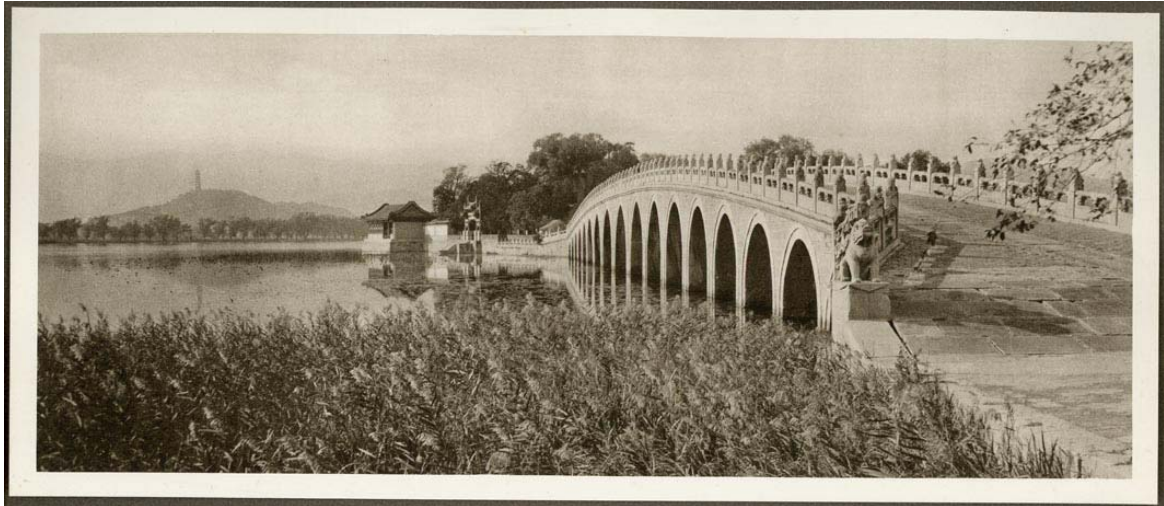
¶ Mennie, Donald (1899-1941).



157 MENNIE, Donald. Marble Bridge - Summer Palace. Shanghai, 1922. Original vintage gravure (Van Dyck Photogravure), 11,2 x 27,8, cm, reverse is blank, and it is attached to original paper mount. - From the album: The Pageant of Peking, Shanghai, 1922, No. LVI.

132,00

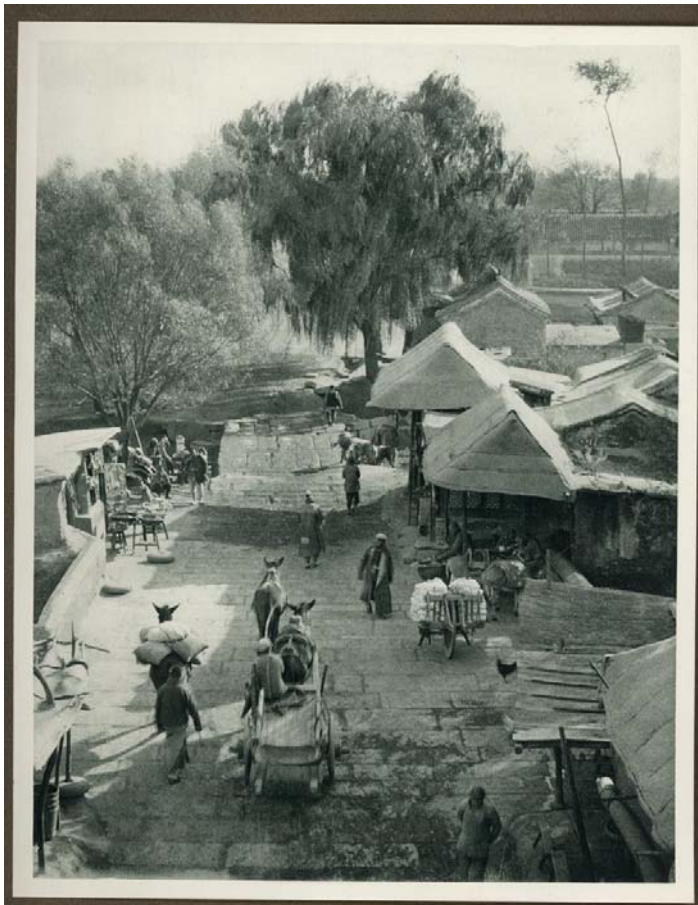
¶ Mennie, Donald (1899-1941).



158 MENNIE, Donald. A Road in the Suburbs. Shanghai, 1922. Original vintage gravure (Van Dyck Photogravure), 24,5 x 19 cm, reverse is blank, and it is attached to original paper mount. - From the album: The Pageant of Peking, Shanghai, 1922, No. LVII.

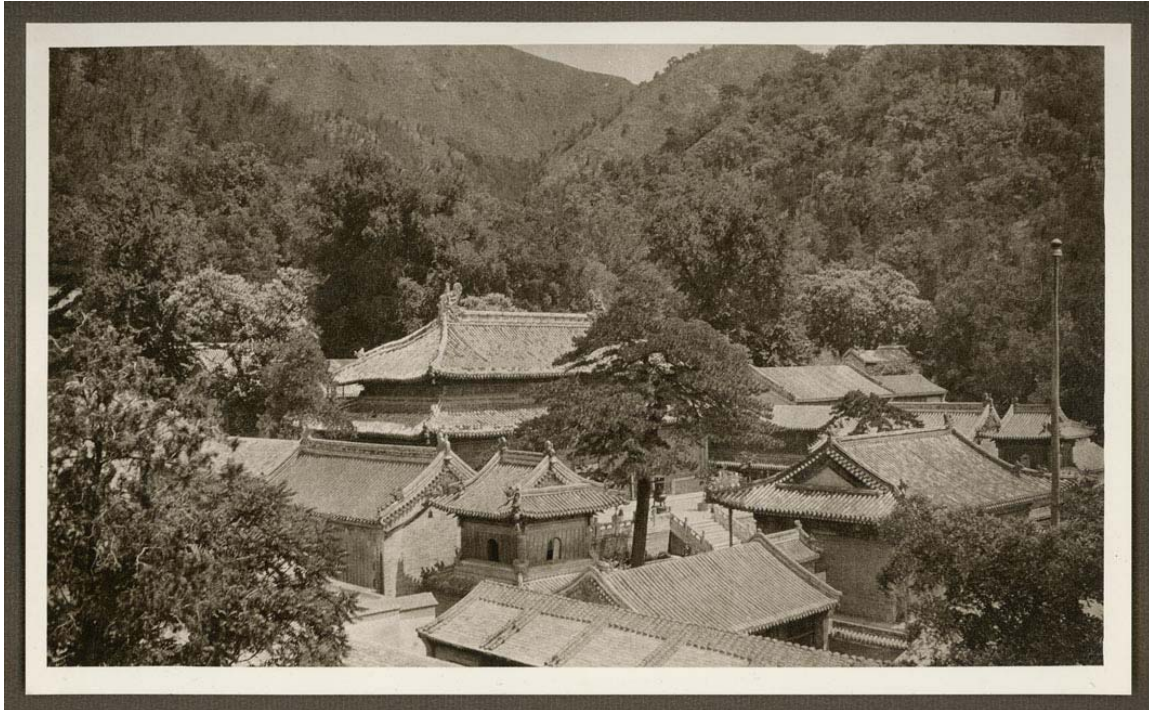
156,00

¶ Mennie, Donald (1899-1941).



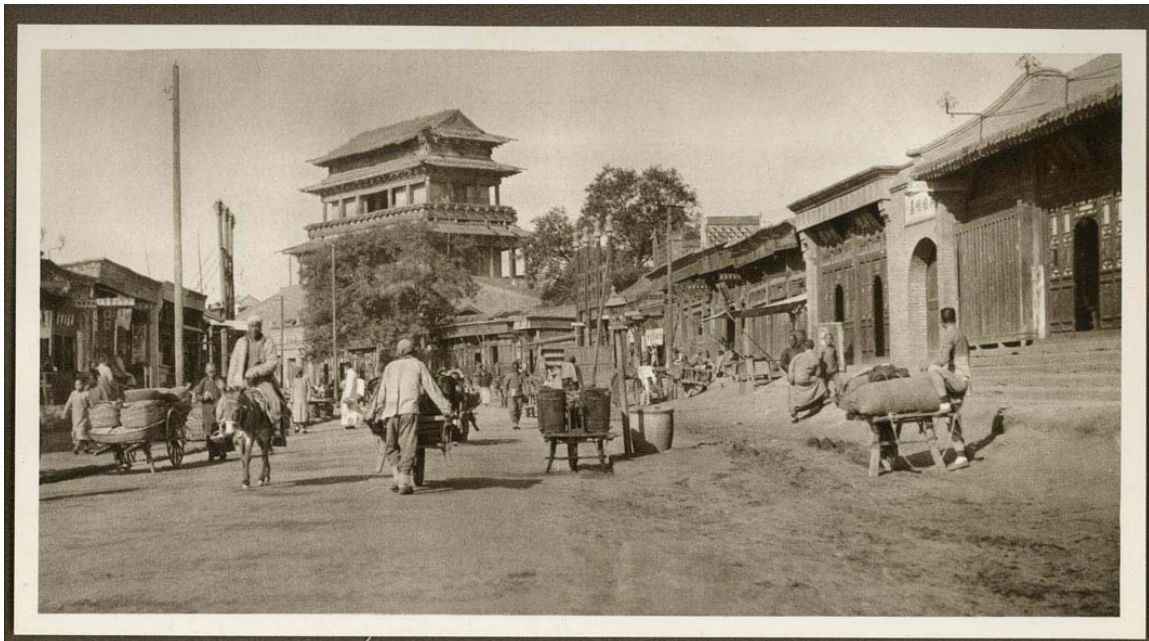
159 MENNIE, Donald. Ta Chüeh Ssu - Western Hills. Shanghai, 1922. Original vintage gravure (Van Dyck Photogravure), 15,7 x 26,5 cm, reverse is blank, and it is attached to original paper mount. - From the album: The Pageant of Peking, Shanghai, 1922, No. LVIII. 132,00

¶ Mennie, Donald (1899-1941).



160 MENNIE, Donald. Tê AShêng Mên - gate of Victory. Shanghai, 1922. Original vintage gravure (Van Dyck Photogravure), 14,5 x 27,7 cm, reverse is blank, and it is attached to original paper mount. - From the album: The Pageant of Peking, Shanghai, 1922, No. LVIX. 144,00

¶ Mennie, Donald (1899-1941).



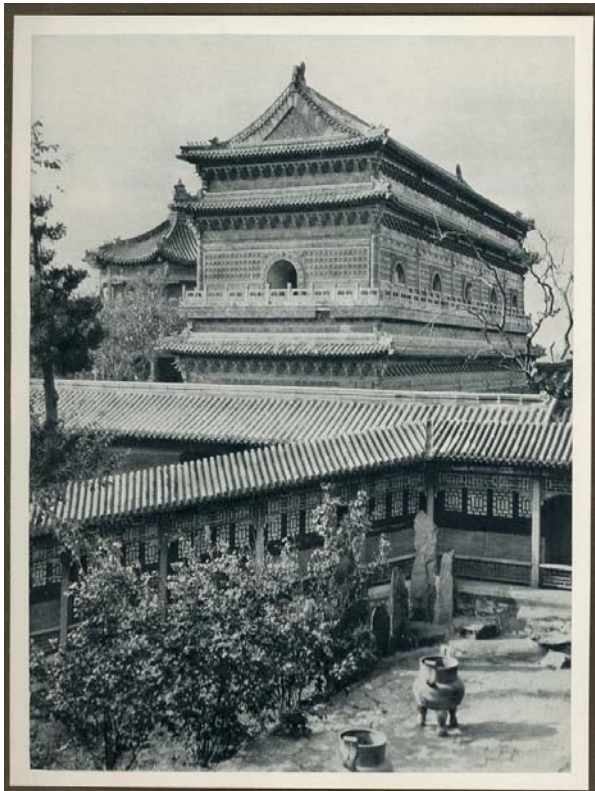
161 MENNIE, Donald. Bronze ornaments - Summer Palace. Shanghai, 1922. Original vintage gravure (Van Dyck Photogravure), 18 x 26,6 cm, reverse is blank, and it is attached to original paper mount. - From the album: The Pageant of Peking, Shanghai, 1922, No. LX. 120,00

¶ Mennie, Donald (1899-1941).



162 MENNIE, Donald. Wan Fo Ssu - Temple of Ten Thousand Buddhas. Shanghai, 1922. Original vintage gravure (Van Dyck Photogravure), 25,8 x 19,2 cm, reverse is blank, and it is attached to original paper mount. - From the album: The Pageant of Peking, Shanghai, 1922, No. LXI. 120,00

¶ Mennie, Donald (1899-1941).



163 MENNIE, Donald. The Yung Ting Mên. Shanghai, 1922. Original vintage gravure (Van Dyck Photogravure), 16.7 x 26,6 cm, reverse is blank, and it is attached to original paper mount. - From the album: The Pageant of Peking, Shanghai, 1922, No. LXII. 144,00

¶ Mennie, Donald (1899-1941).



164 MENNIE, Donald. Temple of Confucius. Shanghai, 1922. Original vintage gravure (Van Dyck Photogravure), 25 x 19 cm, reverse is blank, and it is attached to original paper mount. - From the album: The Pageant of Peking, Shanghai, 1922, No. LXIII. 132,00

¶ Mennie, Donald (1899-1941).



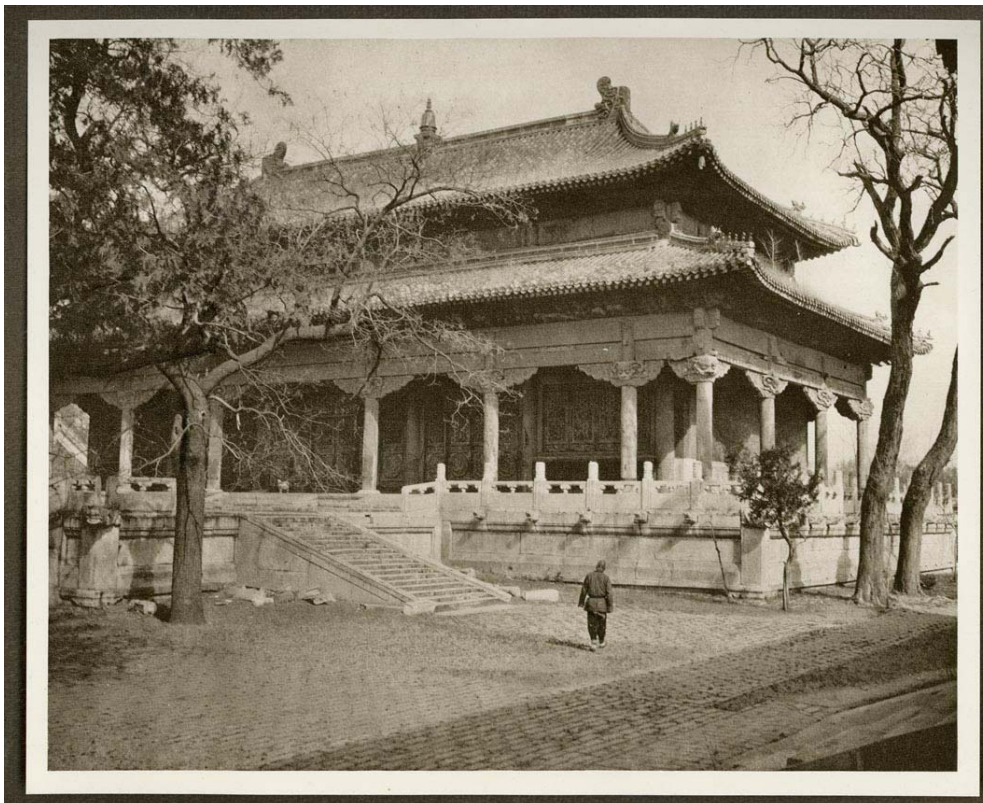
165 MENNIE, Donald. The Alter of Heaven. Shanghai, 1922. Original vintage gravure (Van Dyck Photogravure), 16,2 x 26,6 cm, reverse is blank, and it is attached to original paper mount. - From the album: The Pageant of Peking, Shanghai, 1922, No. LXIV. 132,00

¶ Mennie, Donald (1899-1941).



166 MENNIE, Donald. The Yellow Temple. Shanghai, 1922. Original vintage gravure (Van Dyck Photogravure), 19 x 23,5 cm, reverse is blank, and it is attached to original paper mount. - From the album: The Pageant of Peking, Shanghai, 1922, No. LXV. 144,00

¶ Mennie, Donald (1899-1941).



167 MENNIE, Donald. When the Evening Shadows fall. Shanghai, 1922. Original vintage gravure (Van Dyck Photogravure), 16,8 x 26,7 cm, reverse is blank, and it is attached to original paper mount. - From the album: The Pageant of Peking, Shanghai, 1922, No. LXVI.

132,00

¶ Mennie, Donald (1899-1941).



168 MENNIE, Donald. The Grandeur of the Gorges. Fifty Photographic Studies, with Descriptive Notes, of China's Great Waterway, the Yangtze Kiang, including twelve handcoloured Prints. Shanghai, A.S. Watson & Company/Kelly & Walsh, Limited, 1926. First Edition. All 50 plates are present, tipped-in and mounted on heavy stock on stubs with a description of each plate and an accompanying vignette on the opposite page. Bound with a gold spine and corners and with black embossed silk on the boards with gilt lettering. Small folio, Edition Limited to 1,000 copies, this is number 958. - Binding and endpapers bit discoloured/browning. Inside slightly brown spots.

2.160,00

¶ (Exquisite natural beauty now lost beneath the 370 mile reservoir created by the Three Gorges Dam). A beautiful book, an elegantly bound quarto in finely woven and dyed silk to create a picture of the Gorges of the Yangtze River on the front boards



169 MUGPO. Bridge over a canal. 1904. Original photograph, cabinet-card, silver print, 7,9 x 11 cm on mount. 30,00



170 MUGPO. Sampans. ca. 1890. Original photograph cabinet-card, gelatine silver print, 8,3 x 10,9 cm on mount. 30,00



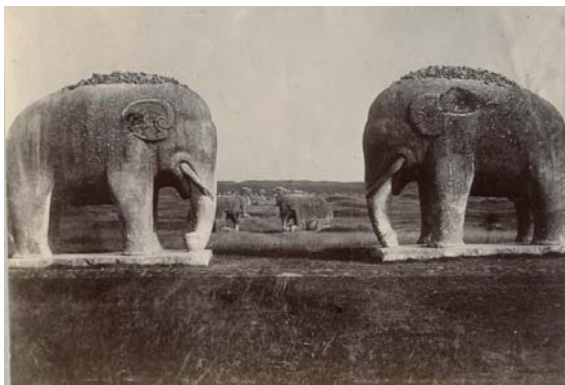
171 MUKDEN (SHENYANG). Railway-Station in Mukden. 1900. Original photograph, gelatine silver print, 8,5 x 8,2 cm. 42,00



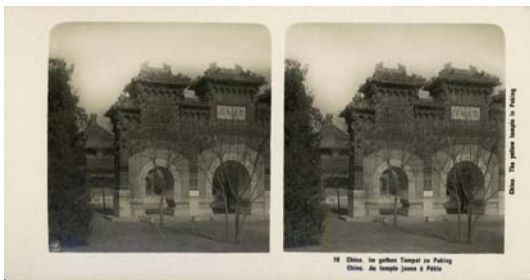
172 NANKING. Nanking view on the Qinhuai River with the Confucius Temple. Nanking, ca. 1900-1910. Photopostcard, silver print, 9 x 14 cm. Picture no 49. 21,60



173 NANKING. Elephant statues on Sacred Way Ming Tombs Nanking. 1900. Original photograph, gelatine silver print, 8,9 x 12,7 cm. 36,00



174 NEUE PHOTOGRAPISCHE GESELLSCHAFT. China. The yellow temple in Peking. Berlin-Steglitz, NPG, ca. 1905-1910. Original photograph, stereo-photograph, gelatine silver print, 9 x 17,2 cm, photograph no 10. 21,60



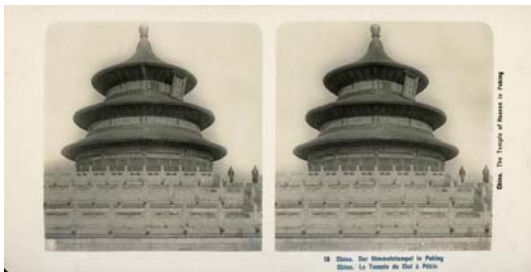
175 NEUE PHOTOGRAPISCHE GESELLSCHAFT. China. Temple of Heaven in Peking. Berlin-Steglitz, NPG, ca. 1905-1910. Original photograph, stereo-photograph, gelatine silver print, 9 x 17,2 cm, photograph no 14. 21,60



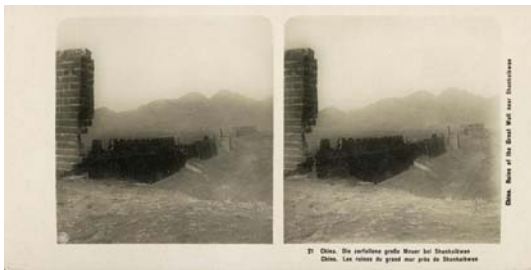
176 NEUE PHOTOGRAPISCHE GESELLSCHAFT. China. Confuzius Temple in Peking. Berlin-Steglitz, NPG, ca. 1905-1910. Original photograph, stereo-photograph, gelatine silver print, 9 x 17,2 cm, photograph no 12. 21,60



177 NEUE PHOTOGRAPISCHE GESELLSCHAFT. China. Temple of Heaven in Peking. Berlin-Steglitz, NPG, ca. 1905-1910. Original photograph, stereo-photograph, gelatine silver print, 9 x 17,2 cm, photograph no 19. 21,60



178 NEUE PHOTOGRAPISCHE GESELLSCHAFT. China. Ruins of the Great Wall near Shanhaikwan. Berlin-Steglitz, NPG, ca. 1905-1910. Original photograph, stereo-photograph, gelatine silver print, 9 x 17,2 cm, photograph no 21. 21,60



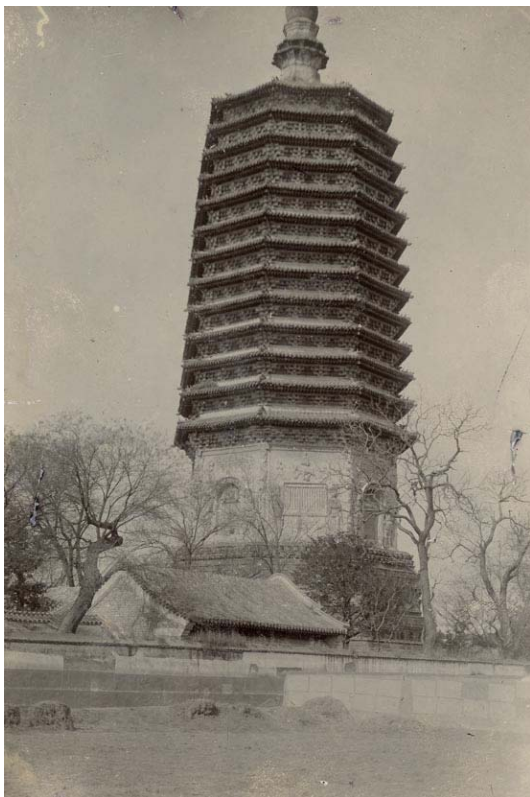
179 NINGBO. Rice-field, houses, Ningbo. 1900. Original photograph, gelatine silver print, 9,5 x 14,1 cm. 48,00



180 PEI-HO. Jonks on the Pei-Ho. 1901. Original photograph, carte de visite, gelatine silver print, 5,5 x 8,9 cm on mount. 21,60



181 PEKING. Porcelain tower. ca. 1890. Original photograph, gelatine silver print, 18,9 x 12,5 cm, on mount. Few small spots. 72,00



182 PEKING. Temple du Ciel. 1904. Original photograph, cabinet-card, silver print, 8 x 10,9 cm on mount. 21,60



183 PEKING. Temple. 1900. Original photograph, gelatine silver print, 10,2 x 14,2 cm.
Corner damage. 30,00



184 PEKING. Temple (2). 1900. Original photograph, gelatine silver print, 10,2 x 14,2 cm. Corner damage. 36,00



185 PEKING. View on Temple and garden. 1900. Original photograph, gelatine silver print, 10 x 14,2 cm. 60,00



186 PEKING. View on Temple. 1900. Original photograph, gelatine silver print, 10 x 14,2 cm. 84,00



187 PEKING. View on the Palace of Peking. ca. 1890. Original photograph, gelatine silver print, 20,2 x 26,5 cm. 360,00



188 PEKING. Llama Temple of Peking. ca. 1890. Original photograph, gelatine silver print, 20,2 x 26,5 cm. 300,00



189 PEKING. The Pagoda of Tianning Temple. ca. 1890. Original photograph, gelatine silver print, 26,6 x 20,2 cm. 300,00



190 PEKING. Chenmen Street. Chenmen Gate. ca. 1890. Original photograph, gelatine silver print, 20,2 x 26,6 cm. 480,00



191 PEKING. The Dongzhimen Gate of the Beijing City Wall, a Camel Caravan and at least 6 buttresses of the City Wall of Beijing. ca. 1890. Original photograph, gelatine silver print, 20,2 x 26,6 cm. 480,00



192 PEKING. The Zhengyang Gate (Ciean-mun, or Chean-Gate at Peking). ca. 1890. Original photograph, gelatine silver print, 20,2 x 26,6 cm. 480,00

¶ One of the nine great gates of ancient Peking, taken from on top of the Tartar Wall. The Zhengyang Gate was located at the front entrance of the Forbidden City during the Ming and Qing Dynasties and is commonly referred to as the Front Gate. The "nine great gates" of Peking were built in the reign of Ming Emperor Yongle.



193 PEKING. Gates of the City Wall of Peking. ca. 1890. Original photograph, gelatine silver print, 20 x 26,6 cm. 480,00



194 PORT ARTHUR (Lüshunkou). Port Arthur Road, to new Chinese town, Lüshunkou, Liaodong. 1900. Original photograph, gelatine silver print, 8,7 x 8,6 cm. 36,00



195 PORT ARTHUR (Lüshunkou). Chinese quarter in Port Arthur, Lüshunkou, Liaodong. 1900. Original photograph, gelatine silver print, 8,3 x 8,4 cm. 42,00



196 PORT ARTHUR (Lüshunkou). Port Arthur, (Strelkonagostreet), Lüshunkou, Liaodong. 1900. Original photograph, gelatine silver print, 8,4 x 8,4 cm. 42,00



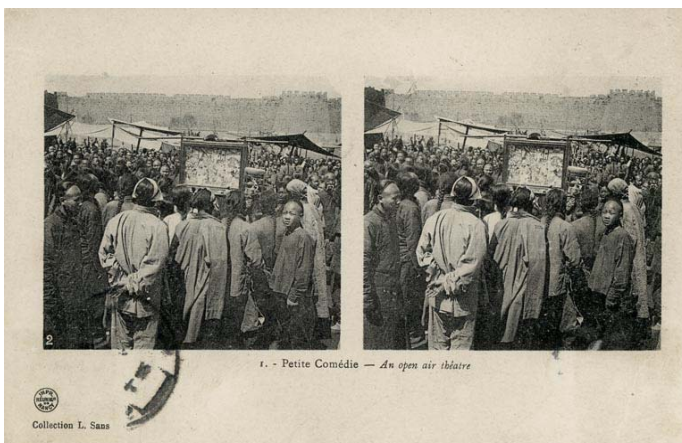
197 PORT ARTHUR (Lüshunkou). Red Cross in Port Arthur, Lüshunkou, Liaodong. 1900. Original photograph, gelatine silver print, 8,7 x 8,4 cm. 42,00



198 PORT ARTHUR (Lüshunkou). Chinese street in Port Arthur, Lüshunkou, Liaodong. 1900. Original photograph, gelatine silver print, 8,6 x 8,4 cm. 42,00



199 SANS, Collection L. 1. Petite Comédie - An open air théâtre (Peking). Impr. de Réunion de Nancy, ca. 1905, Original phototype, Stereoscopic postcard, 9 x 14 cm. Publisher: Collection L. Sans Librairie Française de Peking (Chine). Printer: Imprimeries Réunies de Nancy. Used to Bruxelles with Peking stamps. 60,00



200 SCHANTUNG. Juan Shi Kai's Orchestra. Schantung. ca. 1900. Original photograph, gelatine silver print, 11,7 x 16,5 cm. - Yüan Shi-K'ai (1859-1916) chinese general and statesman, organiser modern chinese army, Gouverneur of Schantung (1901-1902), from 1912 Chinese president. 192,00



201 SCHANTUNG. Old Schantung Chinese in Winterclothes. ca. 1900. Original photograph, gelatine silver print, 16,5 x 11,7 cm. 84,00



202 SHANGHAI. A little girl in Oldtown Shanghai. ca. 1980. original photograph, silver print, sizes 14 x 21 cm, papersizes 17,5 x 24 cm 15,00



203 SHANGHAI. A water and houses near Shanghai. 1900. Original photograph, gelatine silver print, 8,1 x 6 cm. 12,00



204 SHANGHAI. At a barbershop in Oldtown Shanghai. ca. 1980. 1st Edition, original photograph, silver print, sizes 14 x 21 cm, papersizes 17,5 x 24 cm 35,00



205 SHANGHAI. Beggars. ca. 1890-1900, Original photograph, cabinet-card, gelatine silverprint, 8 x 12,2 cm, on mount. 42,00



206 SHANGHAI. Breakfast on the Houseboat. 1900. Original photograph, gelatine silver print, 6,5 x 10,7 cm. 24,00



207 SHANGHAI. Carriage with two dutchmen and two chinese drivers. 1900. Original photograph, gelatine silver print, 16 x 12 cm. 144,00



208 SHANGHAI. Chinese boy standing in front of house, landscape near Shanhai. 1900. Original photograph, gelatine silver print, 9 x 11,5 cm. 24,00



209 SHANGHAI. Foochowroad. 1900. Original photograph, gelatine silver print, 9,9 x 13,8 cm. 96,00



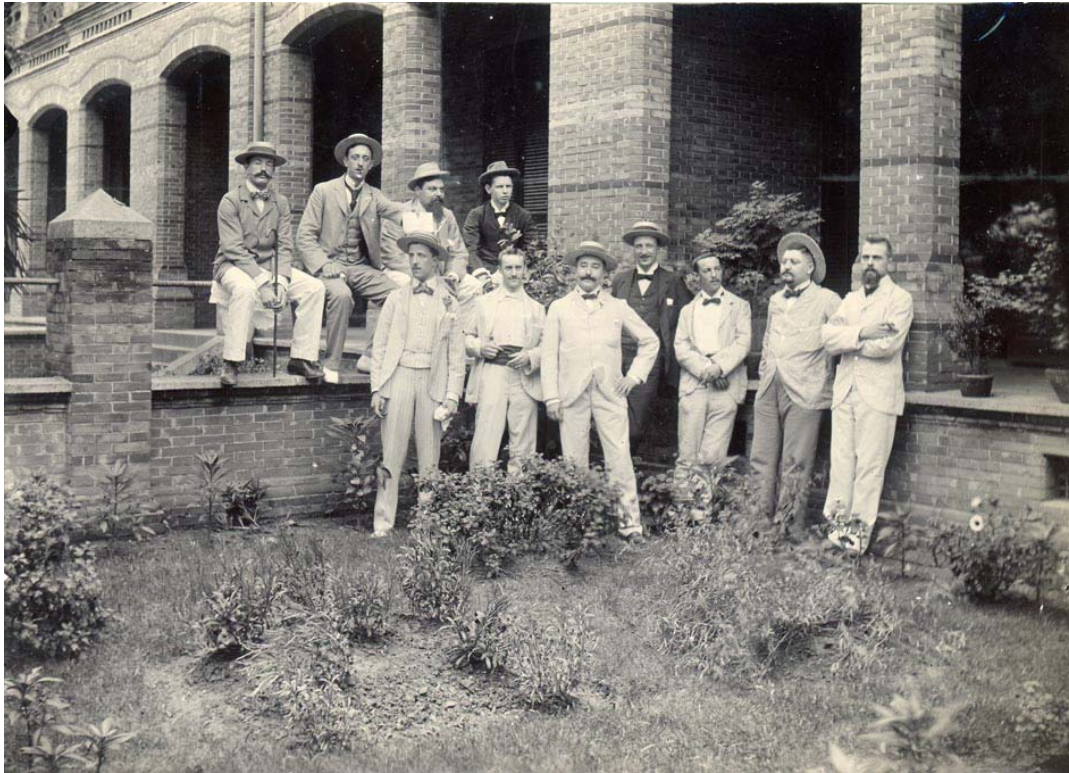
210 SHANGHAI. Garded Volunteers from the Shanghai Volunteer Corps. 1900. Original photograph, gelatine silver print, 21,1 x 29 cm. - With a small arrow for one of the soldiers: the dutchman Pieter Bakels. 480,00



211 SHANGHAI. Girl from Shanghai. 1900. Original photograph, gelatine silver print, 14,4 x 9,8 cm. 144,00



212 SHANGHAI. Groupportrait of the Dutchmen in the garden of the house of Piet Verbroek, Shanghai. - 's Jacob, Kolkmeier, van Laer, von Hunt, J.Verbroek, Dijxhoorn, Rob Goedkoop, van Pelt, J.Speelman, Piet Verbroek. 1900. Original photograph, gelatine silver print, 12,4 x 17,5 cm. 240,00



213 SHANGHAI. Groupportrait of the Dutchmen in the environment of Shanghai. - (- - -), Kolkmeier, (a lady and her partner), (- - -), (- - -), 's Jacob, Piet Verbroek, and a chinese person. 1900. Original photograph, gelatine silver print, 15 x 20,5 cm. 240,00



214 SHANGHAI. House, probably of J. Verbroek. 1900. Original 2 photographs, gelatine silver prints, 8 x 5,7 cm. 18,00



215 SHANGHAI. Huzhu Pagoda, Songjiang District of Shanghai. 1900. Original photograph, gelatine silver print, 8,1 x 6 cm. 12,00

¶ Huzhu Pagoda is a Chinese Pagoda located on Tianmashan Hill in the Songjiang District of Shanghai.



216 SHANGHAI, Impression of a family-life in Oldtown Shanghai. ca. 1980, 1st Edition, original photograph, silver print, sizes 21 x 14 cm, papersizes 24 x 17,5 cm. 40,00



217 SHANGHAI. J. Huidekoper in the house of Piet Verbroek, Shanghai. 1900. Original photograph, gelatine silver print, 8,2 x 6 cm. 24,00



218 SHANGHAI. J. Huidekoper in the house of Piet Verbroek, Shanghai (2). 1900. Original photograph, gelatine silver print, 8,2 x 6 cm. 24,00



219 SHANGHAI. J. Huidekoper in the house of Piet Verbroek, Shanghai (3). 1900. Original photograph, gelatine silver print, 8,1 x 5,9 cm. 24,00



220 SHANGHAI. J. Speelman in the house of Piet Verbroek, Shanghai. 1900. Original photograph, gelatine silver print, 8,1 x 5,9 cm. 24,00



221 SHANGHAI. Jardin Chinois. 1904. Original photograph, cabinet-card, silver print, 7,9 x 10,9 cm on mount. 21,60



222 SHANGHAI. Landscape. 1900. Original photograph, gelatine silver print, 8 x 5,5 cm. 12,00



223 SHANGHAI. Nankingroad. 1900. Original photograph, gelatine silver print, 9,9 x 14,3 cm. Photograph No A49. 96,00



224 SHANGHAI. Old Woman. ca. 1890-1900. Original photograph, cabinet-card, gelatine silver print, 8,2 x 12,1 cm, on mount. 42,00



225 SHANGHAI. On a mountain near the Taihu Lake. 1900. Original photograph, gelatine silver print, 6,1 x 10,7 cm. 24,00



226 SHANGHAI. Piet Verbroek at home, Shanghai. 1900. Original photograph, gelatine silver print, 8,3 x 5,8 cm. 24,00



227 SHANGHAI. Riksja with two women. ca. 1880. Original photograph, albumen print, 20,6 x 27,4 cm. 360,00



228 SHANGHAI. The House of Piet Verbroek, Shanghai. 1900. Original photograph, gelatine silver print, 8,2 x 5,9 cm. 24,00



229 SHANGHAI. The House of Piet en J. Verbroek, Bubbling Well Lane 67, Shanghai. Piet Verbroek with another person in front of the house. 1900. Original photograph, gelatine silver print, 15,4 x 12,2 cm. 96,00



230 SHANGHAI. Three dutchmen with a little girl in Shanghai. 1900. Original photograph, gelatine silver print, 8,2 x 6 cm. 12,00



231 SHANGHAI. Two Europeans in Coach. ca. 1890-1900. Original photograph, cabinet card, albumen print, 10,1 x 13,8 cm, on mount. 72,00



232 SHANGHAI. Two older women on a wooden bench in front of an ideological poster with smiling men of importance. ca. 1980. 1st Edition Original photograph, silverprint, sizes 21 x 14 cm, papersizes 24 x 17,5 cm. 45,00



233 SHANGHAI. View on the Garden Bridge, Soochow Creek and Whanpoo River. 1900. Original photograph, gelatine silver print, 9,6 x 14,1 cm. 96,00



234 SHANGHAI. View on house, surroundings Sanghai. 1900. Original photograph, gelatine silver print, 11,5 x 9 cm. 36,00



235 SHANGHAI. View on the Bund. ca. 1880. Original photograph, albumen print, 20,6 x 26,5 cm. 360,00



236 SHANGHAI. View on the Gardens. ca. 1880. Original photograph, albumen print, 25 x 35,8 cm. Borders bit discoloured. 480,00



237 SHANGHAI. View on the waterfront with in the background the City of Shanghai. ca. 1980, 1st Edition original photograph, silver print, sizes 14 x 21 cm, papersizes 17,5 x 24 cm 25,00



238 SHANGHAI. View on a fishmarket and streetlife in Oldtown Shanghai. ca. 1980. 1st Edition, original photograph, silver print, sizes 14 x 21 cm, papersizes 17,5 x 24 cm 40,00



239 SHANGHAI. View on a youth-festivity with market stalls. ca. 1980. Original photograph, silver print, sizes 14 x 21 cm, papersizes 17,5 x 24 cm 30,00



240 SHANGHAI. Woman standing in front of house, landscape near Shanhai. 1900. Original photograph, gelatine silver print, 11,5 x 9 cm. 24,00



241 SHANGHAI. Yueyuan Road. Oldtown Shanghai. Waitress in doorway with two chicken-children toys in front. ca. 1980. 1st Edition, original photograph, silver print, sizes 14 x 21 cm, papersizes 17,5 x 24 cm. 35,00



242 SOOCHOW (SUZHOU). Baodai Bridge, Suzhou. 1900. Original photograph, gelatine silver print, 6,3 x 9,4 cm. 24,00



243 SOOCHOW (SUZHOU). City Wall and boats, Suzhou. 1900. Original photograph, gelatine silver print, 6,1 x 9,8 cm. 18,00



244 SOOCHOW (SUZHOU). City Wall, Suzhou. 1900. Original photograph, gelatine silver print, 6,1 x 10,6 cm. 18,00



245 SPEELMAN, J. Speelman shaved by a chinese barber. 1900. Original photograph, gelatine silver print, 6,1 x 10,3 cm. 24,00



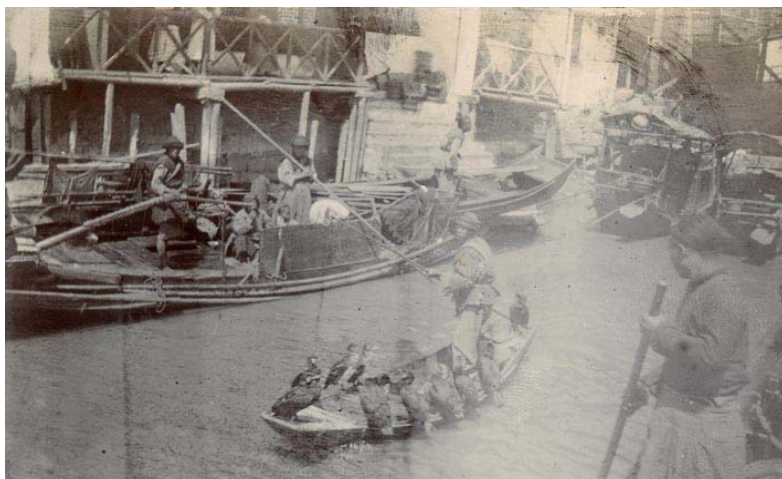
246 TAIHU. Chinese tombs, near Taihu Lake. 1900. Original photograph, gelatine silver print, 6,2 x 10,1 cm. 18,00



247 TAIHU LAKE. Chinese tombs. 1900. Original photograph, gelatine silver print, 6,1 x 10,5 cm. 18,00



248 TAIHU LAKE. Fishermen with birds in village, Taihu Lake. 1900. Original photograph, gelatine silver print, 6,2 x 10,3 cm. 24,00



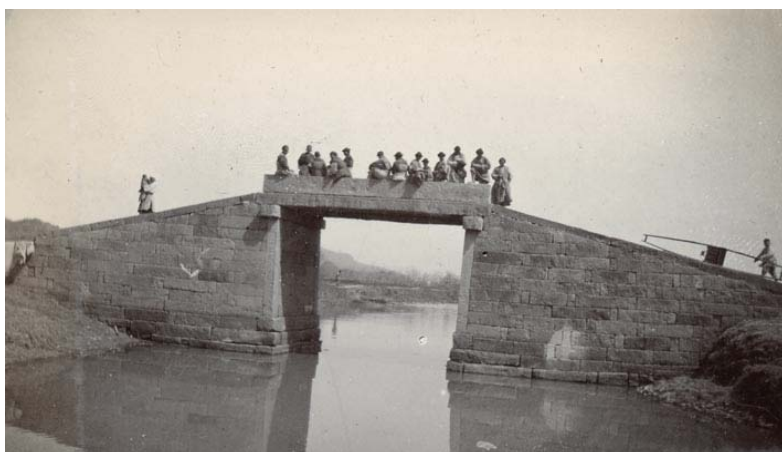
249 TAIHU LAKE. Fishermen with boats in a village, Taihu Lake. 1900. Original photograph, gelatine silver print, 6,1 x 9,4 cm. 24,00



250 TAIHU LAKE. Houses in a village, Taihu Lake. 1900. Original photograph, gelatine silver print, 6 x 10,3 cm. 24,00



251 TAIHU LAKE. Bridge near Taihu Lake. 1900. Original photograph, gelatine silver print, 6 x 10,5 cm. 24,00



252 TAIHU LAKE. Fisherman in village. 1900. Original photograph, gelatine silver print, 6,5 x 10,1 cm. 24,00



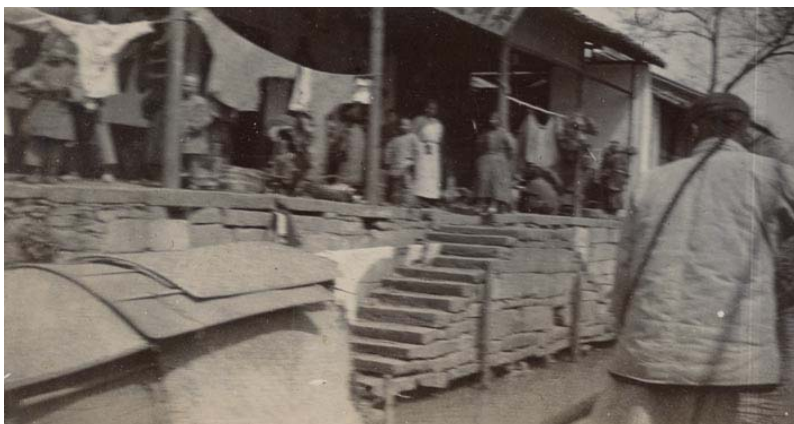
253 TAIHU LAKE. Boat and house in village, Lake Taihu. 1900. Original photograph, gelatine silver print, 6,5 x 10,1 cm. 24,00



254 TAIHU LAKE. On the shores of Lake Taihu. 1900. Original photograph, gelatine silver print, 8 x 5,8 cm. 18,00



255 TAIHU LAKE. Houses with steps, village, fisherman. 1900. Original photograph, gelatine silver print, 5,8 x 10,7 cm. 24,00



256 TAIHU LAKE. Boat on the Taihu Lake. 1900. Original photograph, gelatine silver print, 8 x 10,5 cm. 18,00



257 TIENTSIN. Gate. 1904. Original photograph, cabinet-card, silver print, 7,9 x 10,9 cm on mount. 30,00



258 TIENTSIN (Tianjin). View at a flooded street. ca. 1890. Original photograph, albumen print, 21,2 x 27,3 cm. 300,00



259 TSINANFU. Canal in front of Townwall of Tsinanfu, maintown of the province Schantung. ca. 1900. Original photograph, original silver print, 16,9 x 22,3 cm. 192,00



260 TSINANFU. Road in Tsinanfu with shops. ca. 1900. Original photograph, silver print, 12,4 x 17,2 cm. Photograph no 21. 96,00



261 TSINGTAU. Criminal, short for the execution. ca. 1890-1900. Original photograph, gelatine silver print, 16,5 x 11,8 cm. 144,00



262 TSINGTAU. Criminal with handcuffs. ca. 1890-1900. Original photograph, gelatine silver print, 16,6 x 11,7 cm. 144,00



263 TSINGTAU. Two criminals captivated on tree. ca. 1900. Original photograph, gelatine silver print, 16,4 x 11,7 cm. 96,00



264 TSINGTAU. Fire in the house of Henn & Co, Friedrichstrasse/Bremerstrasse, Office of Hapag and law-court. ca. 1900. Original photograph, gelatine silver print, 15,7 x 10,3 cm. 84,00



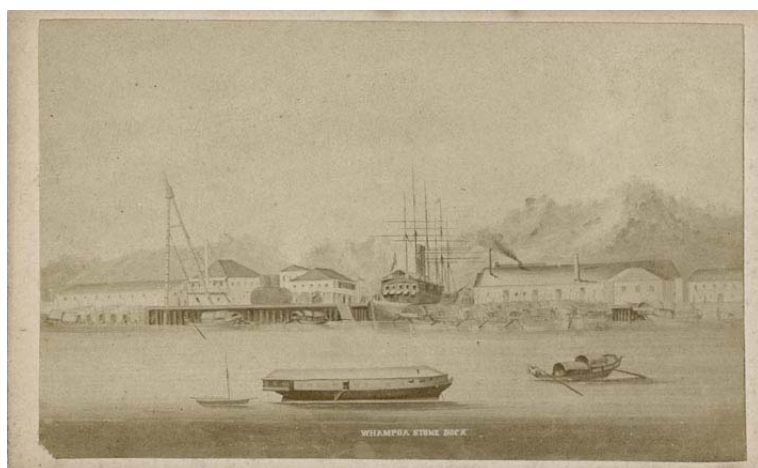
265 UNDERWOOD & UNDERWOOD. Queen Street, Hong Kong, China. New York, a.o., 1896. Original photograph, stereo-photograph, albumen print, 9 x 17,2 cm. 36,00



266 WAN-LI. Wall and one of the gates of Wan-Li. ca. 1900-1905. Original photograph, cabinet-card, 1 silver print, 7,2 x 10,8 cm on mount. 30,00



267 WHAMPOA. Whampoa Stone Dock. (China). ca. 1900. Original photograph, carte de visite, gelatine silver print, 5,8 x 9,4 cm. 30,00



268 YANGTZE KIANG. Pagode to the Yangtze Kiang. 1900. Original photograph, gelatine silver print, 9,3 x 13,5 cm. 84,00



269 YANGTZE KIANG. The little Orphan Rock in the Middle of the River Yangtse-Kiang (the "wees"), Kiukiang Jiaoshan Little Orphan Island Temple. 1900. Original photograph, gelatine silver print, 9,6 x 13,8 cm. 96,00

