

JEFF WEBER RARE BOOKS

PHOTOGRAPHS

Nineteenth Century

Albumen Views of Europe

With additional views relating to

the Caribbean & Hawaii

CATALOGUE 196

CARLSBAD, CALIFORNIA



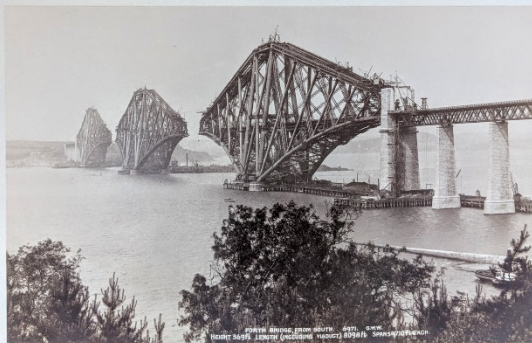
0001 WILSON, George Washington (1823-1893) [photographer]. *21 Prints on 17 mat-boards*. United Kingdom: c. 1880. 21 albumen prints. Mostly 20 x 13 cm. Mat boards. All signed in the print with the photographer's initials. Very good.

\$ 450

Wilson was a pioneering Scottish photographer, responsible for photographically documenting much of Scotland and England.

- 1) London. The Tower of London. February 3, 1902. Signed G.W.W. 20.1 x 13.7 cm. **[pictured]**
- 2) London. The Rose of Henry VII Chapel Westminster. February 3, 1902. Signed G. W. W. 19.3 x 11.6 cm.
- 3) 2 photos. The Prentice Pillar, Rosslyn Chapel. The Chancel Rosslyn Chapel. Signed by G. W. W. [527]; [61]. 20.8 x 13.6 cm. + 20.3 x 13.8 cm.
- 4) Stirling Castle from Ladies' Rock. Signed by G. W. W. [236]. 20.7 x 13.8 cm.

- 5) 2 photographs. The Martyr's Mont Stirling; Stirling Castle, from Ladies' Rock. Signed G. W. W. [901]; [10121]. 20.6 x 13.6 cm. + 19.8 x 13 cm.
- 6) Hampton Court Palace. Signed by G. W. W. [3278]. 20.8 x 12.5 cm.
- 7) Melrose Abbey. Signed by G. W. W. [407]. 20.4 x 13.4 cm.
- 8) 2 photographs. Burn's Cottage, AYR. Signed by G. W. W. [10059]; [536]. 20.2 x 13.9 + 20.7 x 14.1 cm.
- 9) Holyrood Palace & Arthur Seat; Queen Mary's Bedroom Holyrood Palace. Signed by G. W. W. [202]; [6825]. 20.3 x 13.7 cm. + 20.3 x 13.8 cm.
- 10) The Auld Brig O'Doon, Alloway; Alloways of the Burn's family. Signed by G. W. W. [92]; [1275]. 20.3 x 13.6 cm. + 20.4 x 13.4 cm.
- 11) 2 photographs: Princes St. Edin. [Edinburgh, Scotland]; Forth Bridge (under construction). Signed by J. P.; G. W. W. [125]; [6971]. 20.1 x 14.3 cm. + 21 x 13.3 cm. **[pictured]**
- 21) Westminster Abbey. Signed by G. W. W. [3586]. 20.3 x 13.5 cm.
- 13) Rosslyn Chapel. Signed by G. W. W. [65]. 20.9 x 13.2 cm.
- 14) 2 photographs. Canterbury. Photo from the east. St. Augustine's Gateway. Signed by G. W. W. [1894]; [4083]. 20.3 x 13 cm. + 20.3 x 13.4 cm.
- 15) 2 photos. Burn's Cottage, AYR. Both signed G. W. W. [10061]; [10060]. 20.8 x 14.2 cm. + 20.8 x 14.2 cm.
- 16) 2 photographs. Nave, Rosslyn Chapel; The Chancel. Signed by G. W. W. [6337]; [61]. 20.9 x 13.5 cm. + 20.7 x 13.3 cm.
- 17) West front, Westminster Abbey. February 3, 1903. Signed by G. W. W. [1741]. 20.8 x 13.6 cm.





0002 HERTEL, Carl [Karl] (1832-1906) [photographer]. 6 Prints. Frankfurt: c. 1880. 6 albumen prints. 15.5 x 10 cm. (#236 is 32 x 25 cm). Mat-boards. Some notations on boards; prints are untouched. All prints labeled with Hertel's name. Very good.

\$ 250

Hertel was a German photographer who worked out of Mainz. Of these prints, the most interesting by far is the image of the Frankfurter Judengasse, one of the oldest ghettos in Germany. This neighborhood was mostly demolished at the end of the 19th century, and what little remained was destroyed by Allied bombing in WWII. The building shown, the Ancestral Home of the Rothschilds, was built in the 17th century.

1) Frankfurt a. M., Göthemonument. Signed by C. Hertel, Mainz (Carl Hertel). [546].

2) Frankfurt a. M., Rothschild's Stammhaus in der Judengasse [one of the earliest Jewish ghettos in Frankfurt]. Signed by C. Hertel, Mainz (Carl Hertel). [1204]. **[pictured]**

3) Frankfurt a. M. Ariadne. Signed by C. Hertel, Mainz (Carl Hertel). [615].

- 4) Frankfurt a. M., das Göthehaus. Signed by C. Hertel, Mainz (Carl Hertel). [624].
- 5) Frankfurt a. M. Das Opernhaus. Signed by C. Hertel, Mainz (Carl Hertel). [642].
- 6) Signed by Carl Hertel. Sculpture. Ariadne on the Panther. [615]

0004 AMARANTE, Pascal (fl. 1870s) [photographer]. *6 Prints*. France: c. 1870. 6 albumen prints. 20-22 x 13-14 cm. White boards. Occasional notations on boards; prints are untouched. Very good.

\$ 225

French photographer. The image of a Scottish Piper in full regalia is particularly striking. Though his landscapes of Mediterranean cities are quite nice as well.

- 1) Bois de Palmiers. Verso "Pascal Amarante Maison Modèle Menton". Signed in blind, monogram of PA (Pascal Amarante). 21.8 x 13.3
- 2) Monte Carlo. Pascal Amarante. Ornamental blind stamp with letter PA. Signed in blind with PA. 22.4 x 13.8 cm.
- 3) A Highland Piper [367] [Signed with monogram in print PA =Pascal Amarante, active 1870s, French photographer]; The Bore Stone, Bannockburn. Signed G.W.W. (George Washington Wilson), Aberdeen. Date: [1899].

[pictured] 20.6 x 13.4 + 20.6 x 13.5

- 4) Cannes. Vue générale de L'est. Maison Modèle Menton. Signed by Pascal Amarante. 22.3 x 13.8 cm.
- 5) Menton. Vue Prise de la Madone. Maison Modèle Menton. Signed by Pascal Amarante. 22 x 13.8 cm.
- 6) [Monaco]. Menton. Maison Modèle. Signed by Pascal Amarante. 22.5 x 13.6 cm.



0005 Gesellsonaft Photographics OHE. *Girl in Prayer.* Berlin: c. 1890. 1 Albumen print. 12.7 x 10.2 cm. Mat board. Very good. \$ 20 Signed in blind by Gesellsonaft Photographics OHE, Berlin .

0006 RIVE, Roberto. *15 Original Photographic Prints.* Italy: c. 1870. 15 albumen prints. Mostly 26 x 20 cm. White boards. Occasional notation on boards, prints are untouched. Very good.

\$ 300

Rive was a British-born photographer who worked principally in Italy. His photograph of the courtyard of the Uffizi courtyard, lined with street vendors, reveals a Florence vastly different from the elegant, almost antiseptic version of the city seen today.

1) Rome. Statue of Marcus Aurelius. Signed by Rive. [1090]. 25.1 x 20.3 cm.

2) Florence. San Marco Cloister:

“Interno del Chiostro di S. Marco.”

Signed by Rive. [1477]. 25.1 x 19.9 cm.

3) Florence. The Barqello Loggia in Cortile. Signed by Rive. [1443]. 25.4 x 20.2 cm.

4) Rome. St. John Lateran Facade. Signed by Rive. [1006]. 24.8 x 19.6 cm.

5) Rome. St. John Lateran Interior. Mumford. Signed by Rive. [1188]. 25.5 x 19.9 cm.

6) Rome. St. Maria Maggiore Exterior. Mumford. Signed by Rive. [1066]. 25.6 x 20.6 cm.

7) Rome. St. Paul’s, outside the walls Cloister. Mumford. Signed by Rive. [1053]. 25.5 x 19.4 cm.

8) Rome. St. Peters Interior of Vestibule. Signed by Rive. [1175]. 25.2 x 19.5 cm.

9) Rome. St. Peter’s Interior of Nare[?]. Signed by Rive. [1171]. 25.2 x 20.2 cm.



10) Florence, St. Marco Chapter House. Picture of painting. Mystical Crucifixion. Signed by Rive. [1478]. 25.6 x 20.3 cm.

11) Rome. Vedula dell' Interno di S. Maria Maggiore. Signed by Rive. [1184]. 25.3 x 19.8 cm.

12) Florence. San Miniato Façade. Signed by Rive. [1462]. 25.4 x 20.2 cm.

[pictured]

13) Firenze. Palazzo degli Ufficii. Signed by Rive. [1434]. 25.7 x 20.1 cm.

14) Rome. Temple of Vesta. Mumford. Signed by Rive. [1037]. Rive. [1521]. 25.8 x 20.2 cm.

[pictured]

15) Firenze. Interno del Chiostro di S. Marco. [1521]



0007 [Neurdein Frères] Stephen Neurdein (1832-1918); Louis-Antonin Neurdein (1846-1914). 26 Prints on 25 Mat-Boards. France: c. 1890). 26 albumen prints. Mostly about 27 x 21 cm. White boards. Occasional notation on boards; prints are untouched. Very good.

\$ 450

A collection of lovely photos of old Paris. The photo of the Palais du Luxembourg fountain surrounded by a weekend crowd, and full of toy sailboats, is especially nice.

The Neurdein brothers followed their father into the photography trade. Around the turn of the 20th century they merged their company with Léon & Lévy to form *Lévy et Neurdein réunis*.

- 1) Palais de Versailles. La Galerie des Batailles. Signed by X Phot. [261]. 28.1 x 21.4 cm.
- 2) 2 photos. Paris. La Chapelle – interior and exterior. January 4, 1903. Signed by X Phot. 18.1 x 11.1 cm. + 18.4 x 11.8 cm.
- 3) Antonio Allegri, dil il correggio. Signed by X phot. [371]. 28.2 x 21.5 cm.
- 4) Le Grand Trianon. Signed by X Phot. [264]. 26.8 x 22.6 cm.



- 5) Art. Signed by x phot. 27.1 x 22.3 cm.
- 6) La Vierge de Séville. Signed by X Phot. [309]. 28 x 21.3 cm.
- 7) Grand Trianon. Le lit de Napoléon 1^{er}. Signed by X Phot. [521]. 28.1 x 21.6 cm.
- 8) Château de Versailles. Chapel. Signed by X phot. [271]. 27.4 x 22.5 cm.
- 9) Petit Trianon. Le Lit de Marie-Antoinette. Signed by X Phot. [275]. 27.5 x 21.6 cm.
- 10) Le Petit Trianon. Signed by X Phot. [267]. 28 x 21.3 cm.
- 11) Paris. L'Église de la Madeleine. Signed by X Phot. [1078]. 27.4 x 21.5 cm.

- 12) Château de Versailles. Chambre de Louis XIV. Signed by X Phot. [257].
27.7 x 21.5 cm.
- 13) Château de Versailles. Côté du Parc. Signed by X phot. [263]. 27.8 x 20.6
cm.
- 14) Paris. Le Foyer Public de l' Opéra. Signed by X phot. [149]. 27.6 x 22.2 cm.
- 15) Paris. La Grande Allée du Jardin des Tuileries. Signed by X Phot. [658].
27.4 x 22.3 cm.
- 16) Paris. L'Arc de Triomphe. Signed by X phot. [157]. 27.5 x 21.4 cm.
- 17) Paris. Eglise Notre Dame. Signed by X phot. [223]. 28.1 x 21.5 cm.
- 18) Paris. Le Palais du Luxembourg. Signed by X Phot. [173]. 27.2 x 21.5 cm.
- 19) Château de Versailles. La salle des Glaces. Signed by X phot. [251]. 27.6 x
21.3 cm.
- 20) Palais de Versailles. Façade Principale. Signed by X Phot. [617]. 26.8 x 21.1
cm.
- 21) Paris. Tombeau de Napoléon I, (Hôtel des Invalides). Signed, ND Phot. [184].
27 x 21.5 cm.
- 22) Paris. Eglise Saint Germain l' Auxerrois, la Nef. [interior]. January 3, 1915.
Signed, ND Phot. [3]. 27.8 x 21.7 cm.
- 23) Paris. Salle du Gladiateur. Signed, ND Phot. [34]. 26.1 x 21.4 cm.
- 24) Panorama de Paris. Vue sur l'École militaire et Montrouge prise du 3 étage
de la Tour Eiffel. Société de la Tour Eiffel signed in blind. Signed, ND Phot.
[528]. 27.4 x 21.4 cm. [pictured]
- 25) Paris. Le Panthéon. Signed, X and ND Phot. [151]. 27.7 x 21.7 cm.
- 26) Salle des Cariatides. Mercure. Signed, ND Phot. [40]. 28 x 22.5 cm.



0008 Michael FRANKENSTEIN & Co., Wein. 5 Prints. Germany, c. 1880. 5 albumen prints. Mostly 20-21 x 25-26 cm. White mat-boards. Occasional notation on boards, prints are untouched. Very good.

\$ 150

Michael Frankenstein (1843–1918) was an Austrian photographer, Vienna. [5 photos on mat-boards].

- 1) Signed in blind by M. FRANKENSTEIN & Co., Wein.
- 2) Rathhaus. Signed by Atelier Frankenstein & Company. [548].
- 3) Stefauskirche. M. Frankenstein & Co., Wein signed in blind. [140].
- 4) Beethoven-Denkmal von Prof. C. Zumbusch. Signed in blind. M. Frankenstein & Co., Wein [231].
- 5) Belvedere. M. Frankenstein & Co., Wein signed in blind [235].



0009 Friedrich Bruckmann (1848-1898). *9 Prints of Munich*, circa 1880.

Munich: c. 1880. 9 albumen prints. 31 x 22 cm. and 22 x 16 cm. Mat boards; some notation on boards, prints untouched. Very good.

\$ 250

A collection of photos of landmarks and scenes from daily life in late 19th century Munich. Friedrich Bruckmann (1814-1898) was a German publisher and photographer. In 1885 he published the first German art magazine, *Die Kunst*. His sons Alphons, Oskar, and Hugo inherited his business after his death.

- 1) Large stone building with statuary on top. Nerlagsanstalt. München, Vorm [vormals] Bruckmann Signed in blind.
- 2) German street scene. Nerlagsanstalt. München, Vorm Bruckmann Signed in blind. [pictured]
- 3) The Siegestor. München, Vorm Bruckmann signed in blind.
- 4) Munich. Siegesthor (northend of Ludwigs Strasse). January 3, 1915. München, Vorm Bruckmann signed in blind. 31 x 22 cm.

- 5) Munich. The Propyläen. January 3, 1915. München, Vorm Bruckmann signed in blind. 31 x 22 cm.
- 6) Munich. Max Joseph – Platz. January 3, 1915. München, Vorm Bruckmann signed in blind. 31 x 22 cm.
- 7) City roof tops. München, Vorm Bruckmann signed in blind.
- 8) European cathedral street scene with wagons. München, Vorm Bruckmann signed in blind.
- 9) Large European building. München, Vorm Bruckmann signed in blind.

0010 Fratelli ALINARI. *4 Prints of 19th Century Italy.* Florence: Fratelli Alinari, c. 1870. 4 albumen prints. 25 x 18 cm. Mat boards. Annotations on boards, prints untouched. Very good.

\$ 80

Fratelli Alinari is the world's oldest photographic firm. It was founded in Florence in 1852 by Leopoldo Alinari (1832-1865), & Giuseppe Alinari (1836-1890), & Romualdo Alinari (1830-1890), Florence, Italy. [4 photos on mat-boards]

- 1) Pompeii – The House of the Vettii. February 4, 1903. Signed by Alinari. [11349]. 25.3 x 19.9 cm.
- 2) Naples Museum, Mumford. Roman Mosaic. Battle of Issus (Pompeii). February 4, 1904. Signed by Alinari. Photograph of painting. [12050]. 24.8 x 18.8 cm.
- 3) Florence. S. Maria Novella, Spanish chapel interior. January 3, 1913. Signed by Alinari. [2294]. 24.5 x 19.3 cm.
- 4) Pompeii. House of Castor and Pollux, The Peristyle. Mumford. February 4, 1914. Signed, Ed. Alinari. [Edizione Fratelli Alinari] [11349] 25 x



19.4 cm.



0011 James Valentine (1815-1879). *14 Prints on 8 Mat-Boards*. U.K.: c. 1870.
14 albumen prints. Mostly 21 x 13.5 cm. Mat-boards. Very good.

\$ 300

Valentine was a Scottish photographer, known for his topographical photography. His photo of York, which shows York Minster rising above nearby townhouses, is particularly fine.

- 1) 2 photographs. St. Mary's Abbey, York. The City Wall, York. Signed by J, V. (James Valentine). [3284]; [2541]. **[pictured]**
- 2) 2 photographs. Dryburgh Abbey from N. E. [7125] J. V. The High Altar [1850] J. V. (James Valentine).
- 3) York Minster Front; South. Signed by J. V. (James Valentine). [2388], [4232].
- 4) Dryburgh Abbey; from S. Signed by G. W. W.; J.V. (James Valentine). [427]; [1851].
- 5) 2 photographs. Abbotsford. The Drawing Room; The Library. Signed by J. V. (James Valentine). G. W. W. [447]; [417].

- 6) 2 photographs. York Ministry. Choir Screen; The Five Sisters Window. Signed by J. V. (James Valentine). [6638]; [6195].
- 7) Micklegate Bar, York. Signed by J. V. (James Valentine). [2379].
- 8) York Minster, Chancel and E. Window. Signed by J. V. (James Valentine). [2416].



0012 Francis Frith (1822-1898) – **[Frith’s Series]**. *14 Prints on 13 Mat-Boards*. England: c. 1890. 13 albumen prints. From 26 x 16 cm. to 16 x 10.5 cm. Mat-boards; some notation on boards. Prints impressed with Frith’s stamp.

\$ 420

Frith was an important early English photographer. His photos of the Houses of Parliament, including one showing coal barges on the Thames, are spectacular. His eye for composition reveal an aesthetic sensibility well ahead of its time. The 10-part BBC series *Britain’s First Photo Album* examines Frith’s attempt to photograph every city, town and village in Britain.

- 1) Westminster Abbey; Poet’s Corner. Signed in blind “Frith’s Series”. [305]; [100].

- 2) The Knolls Ambleside. Frith's Series, signed in blind. [3969].
- 3) Cathedral Interior. Frith's Series, signed in blind.
- 4) St. Thomas's Tower, Tower of London. Frith's Series, signed in blind.
- 5) Embankment from Waterloo Bridge. Frith's Series, signed in blind.
- 6) Milan. Piazza Del Duomo. January 3, 1913. Frith's Series, signed in blind. [11821].
- 7) House of Parliament. Frith's Series, signed in blind. [118]. **[pictured]**
- 8) Frith's Series, signed in blind. [17639].



- 9) House of Parliament; Old Palace. Frith's Series, signed in blind. [124].
- 10) Marktgasse [Bern, Switzerland]. Frith's Series, signed in blind. [11688].
- 11) Westminster Abbey. Frith's Series, signed in blind. [73].
- 12) House of Parliament. Frith's Series, signed in blind. [121].
- 13) Royal Exchange. Frith's Series, signed in blind. **[pictured]**



0013 Francis Godolphin Osbourne Stuart (ca.1843–1923). *3 Prints*. London:
c. 1880. 3 albumen prints. 22.5 x 14 cm. Mat boards. Very good.

\$ 60

Stuart was a Scottish photographer, best known for his postcards and his images of southern England.

- 1) St. Paul's Cathedral. Signed, F. G. O. S. [3225].
- 2) Buckingham Palace. Signed, F. G. O. S. [3182]. [pictured]
- 3) Albert Memorial Signed, F. G. O. S. [3448].



0014 Antonio Perini (1830-1879) [photographer]. *Titian's Monument, Basilica de Frari*. Italy: c. 1870. 1 albumen print. 33.7 x 26.4 cm. Mat-board; board extremities worn, print untouched. Signed in blind with Perini's mark. Very good.

\$ 60

Titian's monument was crafted by Luigi and Pietro Zandomenighi, disciples of Canova. The photographer, Antonio Perini was one of the first photographers to work in Italy. He mainly shot in Venice.



0015 Edizione Inalterabile. 5 Prints. Florence: c. 1890. 5 albumen prints. Mat boards. Very good.

\$100

Part of the Edizione Inalterabile series of early photographic prints of significant sites in Italy.

- 1) Firenze. Santa Maria Novella–Cloister. Signed, Edizione inalterabile. [6028]. 24.2 x 19 cm.
- 2) Firenze. Interno Di S. Maria Novella. Signed, Edizione inalterabile. [6025]. 24.2 19.8 cm.
- 3) Firenze. Facciata di S. Maria Novella. Signed, Edizione inalterabile. [5034]. 24.2 x 19.3 cm.
- 4) Florence. Campanile. Signed, Edizione inalterabile. [5070b]. 24.6 x 19.1 cm.
- 5) Rome. Porta San Sebastiano. Signed, Edizione inalterabile. [604]. 24.1 x 19.3 cm. pictured



0016 Francis Bedford (1815-1894). *8 Prints on 6 Mat Boards*. London: c. 1890. 8 albumen prints. Various sizes [listed below]. Mat boards; some of the corners are worn but the prints are untouched. Very good.

\$150

Bedford was a British architectural and landscape photographer, lithographer and artist.

- 1) 2 photos. Chester Eastgate Street; Watergate Row. [255]; [267]. 20.5 x 12.5 cm. + 20.5 x 12.5 cm. [pictured]
- 2) 2 photos. Chester. Phoenix Tower [pictured]; God's Providence House. Rope, Brush, & Mat Manufacturer. 20.5 x 12.5 cm. + 20.5 x 12.5 cm.
- 3) Hawarden Castle. Signed by Francis Bedford, 1816-1894. [1506]. 21.5 x 16.5 cm.
- 4) Chester Cathedral. [1643]. 21.5 x 16.5 cm.
- 5) Chester Cathedral. 21.5 x 16.5 cm.
- 6) Hawarden Church. [2371]. 20.5 x 12.5 cm.



0017. Baldi & Würthle. *6 Prints of Salzburg, c. 1870.* Salzburg: c.1890. 6 albumen prints. 24 x 20.7 cm. Mat boards., Salzburg, Austria. Very good. \$ 140

A collection of photographs of Salzburg and the *Berchtesgaden*. The aerial view of Salzburg Castle against the backdrop of the mountains is quite striking.

Baldi & Würthle was a company that consisted of the Salzburg art dealer and photographer Gregor Baldi and the photographer Karl Friedrich Würthle from 1862 to 1874. Baldi and Würthle were pioneers in the fields of landscape and mountain photography.

- 1) Beichlesgaden. v. Baldi & Würthle, Salzburg. [144].
- 2) Beichlesgaden. v. Baldi & Würthle, Salzburg. [66].
- 3) Beichlesgaden. v. Baldi & Würthle, Salzburg. [1].
- 4) Wimbach. v. Baldi & Würthle, Salzburg. [148].
- 5) Almbach v. Baldi & Würthle in Salzburg. [147].
- 6) Wimbach v. Baldi & Würthle in Salzburg. [149].

0018 Giacomo Brogi: (1822-1881). *13 Prints.* Italy: c. 1870. 13 albumen prints. 25.5 x 20.5 cm. Mat-boards; some extremities worn, prints untouched. Very good.

\$ 150

A collection of prints by Giacomo Brogi, and Italian photographer and successful print-seller, one of the first members of the Photographic Society of Italy.

1) Firenze. Facciata della Cattedrale; Prof: De-Fabris. Signed Edizioni Brogi [Giacomo Brogi (1822-1891)]. [5407].

2) Milano. Monumento a Leonardo da Vinci. Photographer: Giacomo Brogi (1822-1891). [3899].

3) Milano. La Cattedrale. Signed Edizioni Brogi [Giacomo Brogi (1822-1891)]. [3118].

4) Firenze. Piazza Pitti. Signed Edizioni Brogi. [3037].

5) La Maddalena penitente. Signed Edizioni Brogi. [2635].

6) Milano. Interno della Cattedrale. Signed Edizioni Brogi. [3827].

7) Ritratto di Papa Giulio II. Signed Edizioni Brogi. [2954].

8) celebre affresco di Leonardo da Vinci. Signed Edizioni Brogi. [2799].

9) celebre affresco di Leonardo da Vinci. Signed Edizioni Brogi. [116].

10) Firenze. Niobe colla figlia piu piccola. Signed Edizioni Brogi. [3160].

11) Dresda. Madonna addolorata. Signed Edizioni Brofi. [357].

12) Dresda. Ecce Homo. Signed Edizioni Brogi. [173].

13) Firenze. Ritratto di Raffaello Sanzio, dipinto da lui stesso. Signed Edizioni Brogi. [2167].





0019 Alfred Pettitt [photographer]. *13 Prints*. England: c. 1870. 13 albumen prints. Various sizes, mostly 20.5 x 15.5 cm. Mat boards. Very good.

\$ 200

A collection of early prints, mostly of English ruins and manor houses covered in moss and creepers. The photos of Furness Abbey [taken prior to 20th Century conservation efforts] are particularly striking.

Pettitt was a British photographer active from the 1860's till his death in 1880.

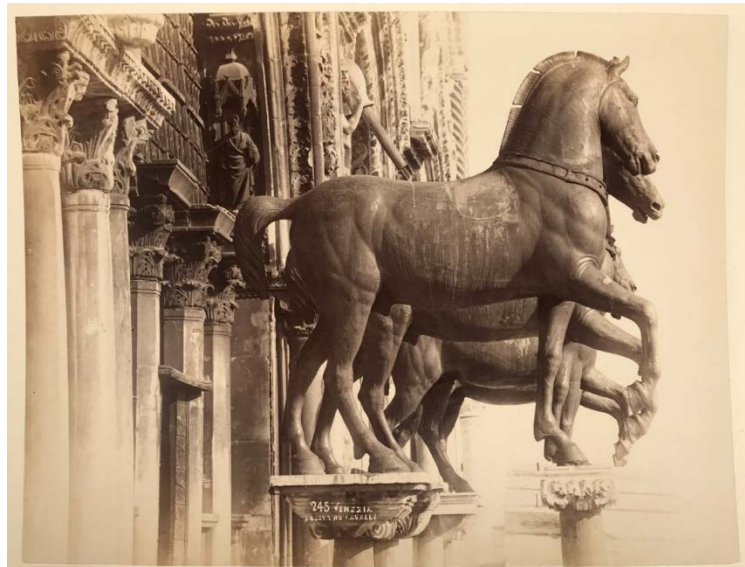
- 1) 954. Rydal Mount A. P.
- 2) East Window, Furness Abbey. Signed by A. P. [707].
- 3) Sedalia Furness, Abbey. Signed in blind by Keswick. Signed by A. P. [727].
- 4) Furness Abbey. Signed by A. P. [703].
- 5) Chapter House. Furness Abbey. Keswick signed in blind. Signed by A. P. [722]. **[pictured]**

- 6) Furness Abbey. Pettitt's Series; Keswick signed in blind. Signed by Alfred Pettitt. [700].
- 7) Guests Chapel. Furness Abbey. Pettitt's Series; Keswick signed in blind. Signed by Alfred Pettitt. [729].
- 8) Exterior manor. Pettitt's Series; Keswick signed in blind
- 9) Ruins. Pettitt's Series signed in blind.
- 10) Country Manor and Landscape. A. P.
- 11) Exterior, residence. Pettitt's Series Keswick signed in blind.
- 12) Exterior European estate with stone wall. Pettitt's Series Keswick signed in blind.
- 13) Tomb. Pettitt's Series Keswick signed in blind.

0020 Giovanni Battista Brusa. *8 Prints of Venice.* Venice: c. 1870. 8 albumen prints. 26.5 x 20 cm. Mat-boards. Very good.

\$ 150

A collection of early photographic prints of various sites in Venice. The images of St. Mark's Basilica are especially striking. Brusa was a Venetian photographer active in the mid-to-late 19th century.



- 1) Venezia. Scala dei giganti dalla corte dei senatori. C. B. Brusa, Venezia, signed in blind. [357]. 26.4 x 20.3 cm.
- 2) Bis: Venezia. Chiesa S. Marco. C. B. Brusa; Venezia, signed in blind. [211]. 26.2 x 19.7 cm.
- 3) Venezia. Chiesa S. Marco C. B. Brusa; Venezia, signed in blind. [2]. 26.2 x 20 cm.
- 4) Venezia. Quattro Cavalli. C. B. Brusa; Venezia, signed in blind. [245]. 26.3 x 20.1 cm. [pictured]

- 5) Venezia. Pallazzo Balbi. Signed in blind by CB Brusa. 26.3 x 20 cm.
- 6) San Marcos Plaza, Venice. CB Brusa signed in blind. 26.4 x 20.1 cm.
- 7) Venezia. Piazza S. Marco Dai Leoncini. Signed in blind CB Brusa. [4]. 26.4 x 20.1 cm.
- 8) Titiano Ferdinandvsi, MDCCCLII. Signed by CB Brusa Venezia. [233]. 26.3 x 20 cm.

0021 Antonio Nessi (1834-1907). *3 Prints*. Switzerland; Italy: c. 1880. 3 albumen prints. Mostly 27.5 x 21.5 cm. Mat-boards. Very good.

\$ 110

Nessi was an Italian engraver, painter, and photographer, who worked out of Como.



- 1) Isole Borromee Lago Maggiore. Signed Antonio Nessi. 27.5 x 21.6 cm.
- 2) Secondo Bacino del Lago di como. Signed by Antonio Nessi. [43]. 27.6 x 21.5 cm. [pictured]
- 3) Lugano Monte S. Salvatore. Signed photographia Nessi-Como. [141]. 27.5 x 21 cm.



0022 Edmondo Behles (1841-1921). *2 Prints*. Rome: c. 1880. 2 albumen prints. 24 x 18 cm. Mat-boards. Very good.

\$ 50

Behles was a German photographer [2 photos on mat-boards].

1) Monte Pincio (Roma). Studio Mario De'Fiori 28, Magazzino Corso 196 signed in blind. [1011]. 23.7 x 17.8 cm.

2) Rome. Vaticano Galleria delle Statue. Studio Mario De'Fiori 28, Magazzino Corso 196, signed in blind. [1738]. [pictured] 24.3 x 18.2 cm.

0024 Eduard Van DELDEN. *8 Prints*. Wrocław: c. 1900. 8 albumen prints. 29.5 x 23 cm. Mat-boards; some boards chipped, prints untouched. All signed with van Delden's mark. Very good.

\$ 200

Eduard van Delden was one of the first serious photographers to document the architecture and city life of Breslau (Wrocław).

- 1) Breslau Promenade [Germany]. Signed, Ed Van Delden
- 2) Breslau. Park, with churches in background.
- 3) Rathaus (town hall). Breslau. [1886].



4) Liebigshöhe is a famous Belvedere in Breslau. The hill was part of the fortification of Breslau until 1807 and was called Taschenbastion. The buildings on the Liebigshöhe consisted of the actual Belvedere with semicircular colonnade, fountain, restaurant, and observation tower. On the dome of the observation tower stood the Victoria of Christian Daniel Rauch.

[pictured]

5) Berlin, Schweidnitzerstrasse Street. Signed, Eduardo Van Delden.

- 6) Breslau. Liebhichshöhe. Signed, Eduardo Van Delden. [1000].
- 7) Breslau. Liebhichshöhe. Signed, Ed. Van Delden. [1886]
- 8) Breslau Universität. Signed, Eduard Van Delden.

0025 Léon & Lévy. 2 Prints on Mat-boards. Paris: c. 1890. 2 albumen prints.
 Mat boards; some notation on boards, prints are untouched. Very good.

\$ 60

A French printer and photograph editing firm. Léon & Lévy was founded in 1864 by Isaac Lévy and his son-in-law Moyse Léon.

1) Paris. Le Palais de Justice. Signed by Léon & Lévy. [156]. 27.1 x 21.8 cm. pictured

2) Granada, Spain. The Alhambra Court of the Lions. Signed [JL]. 31.7 x 26.9 cm.



0026 Friedrich Albert Schwartz (1836-1906). 5 Prints. Berlin: 1887. 5 albumen prints. Mostly 21 x 16 cm. Mat-boards. Very good.

\$ 200

F. Albert Schwartz was a Berlin photographer, who opened one of the first photography studios in the city in 1860.



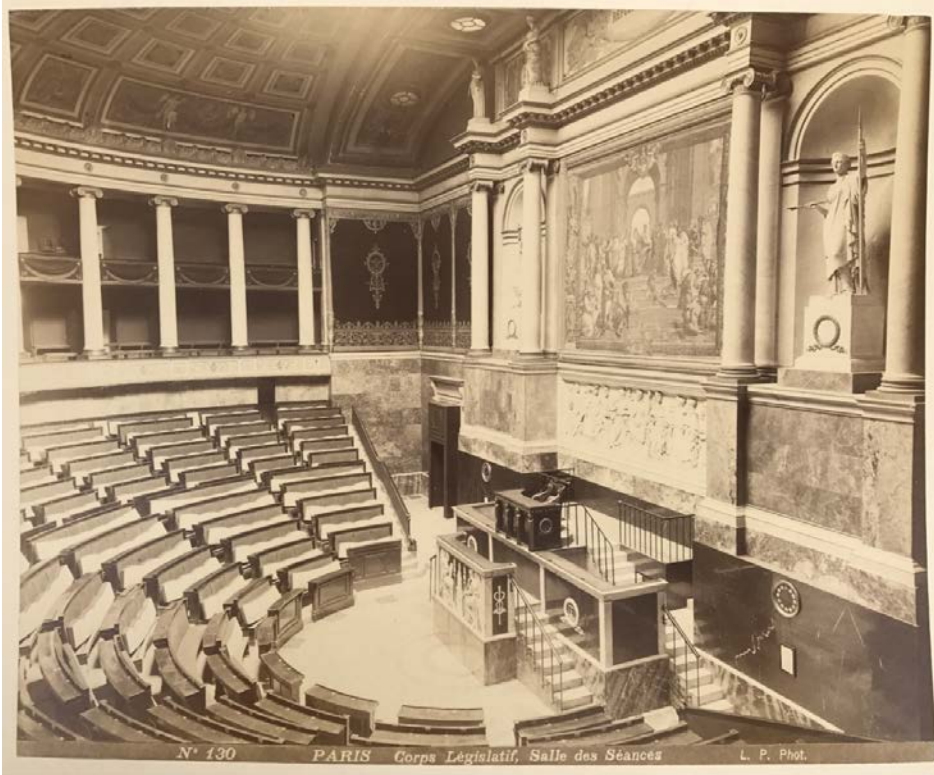
- 1) Large estate with elaborate gardens and fountain. Signed in blind, F. Albert. [1887].
- 2) Berlin. Unter den Linden. Signed in blind, F. Albert.
- 3) F. Albert, photographer, Berlin [signed in blind-stamp] – photographer. tree-lined festival setting, or – trees with signage: Gastspiels Heinrich Bötel (1854-1938), opera singer – Alessandro

JEFF WEBER RARE BOOKS

Zeradessa [?]. Probably in Vienna,
Austria. [ca. 1884-1887]

4) Signed, F. Albert, Berlin. [1387].

5) European building with courtyard. Signed in blind, F. Albert. [pictured]



0027 L. P. 5 Prints. Paris: c. 1890. 5 prints. Mostly 27.5 x 22 cm. Mat-boards;
corners chipped, prints untouched. Very good.

\$70

A collection of mounted photographs of the Louvre and the Corps Legislatif, all
signed L.P. Phot.

1) Paris. « Corps Législatif, Salle des Séances. » Signed by L. P. Phot. [130].

[pictured]

2) Signed by L. P. phot. [77]. 27.8 x 21.8 cm.

3) Paris. Musée Louvre, Galerie de la Vénus de Milo. Signed by L. P. Phot. [65].
27.5 x 22.2 cm.

4) La Venus de Milo. Signed by L. P. Phot. [60]. 27.5 x 22 cm 27.6 x 22.3 cm.

5) La Belle Jardinière, par Raphael. Signed by L. P. phot. [94]. 27.5 x 21.8 cm.

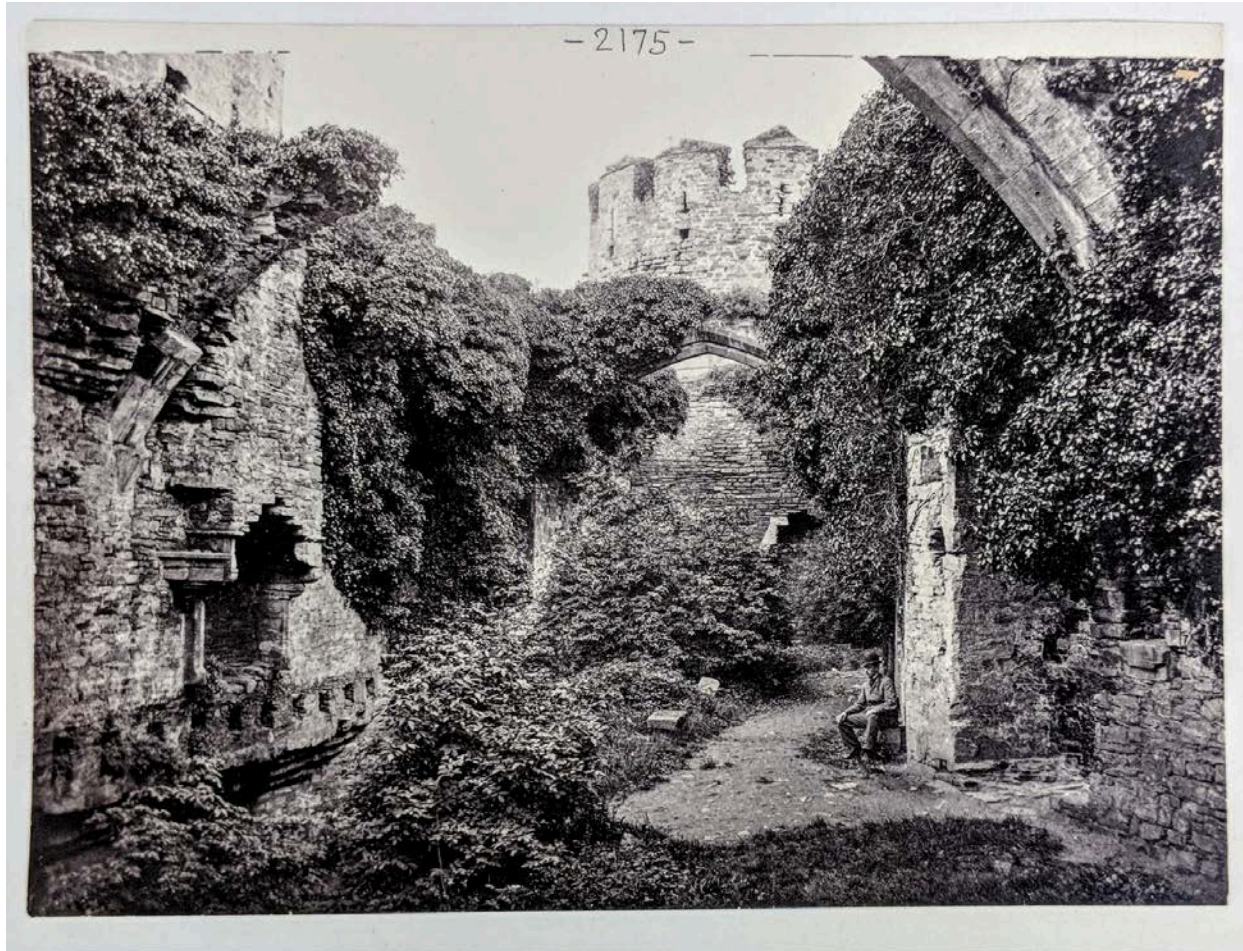
0028 Nature. *11 Prints on 10 Mat-Boards.* Europe; Caribbean: c. 1890. 11 albumen prints. Various sizes [listed below]. 10 mat-boards. Very good.

\$ 170

A collection of interesting photographs from the late-19th century.



- 1) India Rubber Tree. 24.1 x 19 cm. [pictured]
- 2) Tree-shrouded Road. 20.5 x 13.5 cm.
- 3) Mahogany Tree. 24 x 18.8 cm.
- 4) Century Plant. 22.3 x 18 cm.
- 5) Royal Palace garden pond, full of fish. 24.2 x 19.2 cm. [pictured]
- 6) [Easter lily field]. Horse-drawn wagon with man in distance, woman in the field. 24.1 x 18.8 cm.
- 7) Palmetto Grove. 23.3 x 641 cm.
- 8) European Mountain town, and large waterfall. 15.3 x 10 + 15.5 x 10.2 cm.
- 9) Date palms and agave plant. 24.1 x 18.8 cm.
- 10) Banana leaf palm, with farmhouse in background, farmers at the door. 22.1 x 18.1 cm.



0029 England. *14 Prints on 12 Mat-boards.* England: c. 1890. 14 prints. Various sizes, from 28.5 x 20 cm. to 15.5 x 11.5 cm. Mat-boards; extremities rubbed, some notation on boards, prints untouched. Very good.

\$ 230

A collection of early unattributed photographs from England and Wales.

- 1) Wales. Conwy Castle. Banqueting Hall. [2175]. [pictured]
- 2) Westminster Abbey. Henry VII Chapel.
- 3) London. The Tower, church and Execution Spot.
- 4) London. St. Paul's Interior of Nave.
- 5) Westminster Abbey; Henry 7th Chapel. [94].
- 6) Canterbury Cathedral.
- 7) Shakespeare's Home. Stratford on Avon.

- 8) 2 photographs. Canterbury. St. Martins Ch., font. Overgrown ivy wall, cemetery, wooden gate, rock fitted wall. [21406].
- 9) St. Paul's Cathedral – London.
- 10) 2 photos. Memorial plaque for William Wordsworth. William and his wife's tomb stone.
- 11) British Cathedral.
- 12) Stratford on Avon. Red Horse Hotel. Circa. 1901-1904?
- 13) Westminster Abbey. Coronation Chair.



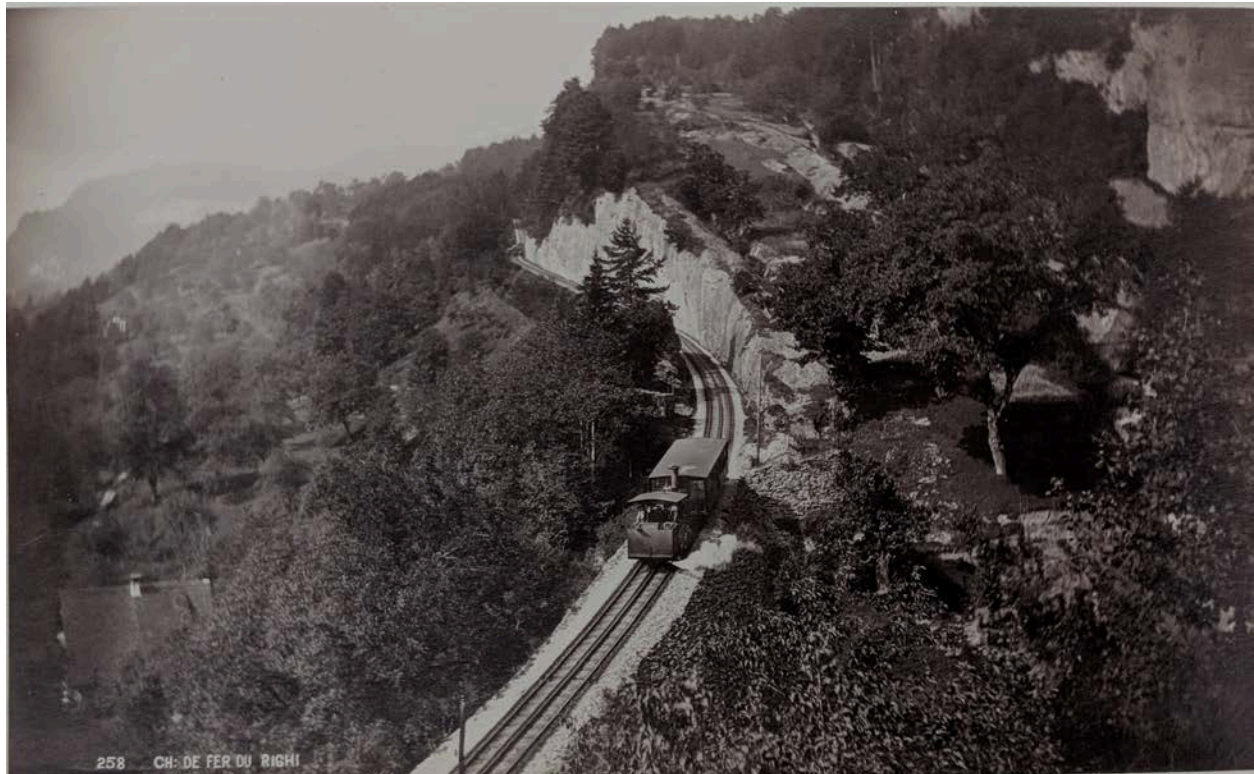
0030 Switzerland. *17 Prints on 15 Mat-Boards.* Switzerland: c. 1890. 17 Albumen Prints. Various sizes [listed below]. 15 Mat-boards; notation on the boards, prints are untouched. Very good.

\$ 300

A collection of late-19th century photographs of Switzerland. Stunning photos of towns, landscapes, trains, and people as they appeared at the dawn of the photographic age.

- 1) Mountaineers. 25 x 18.3 cm. [pictured]

- 2) House overlooking valley and mountain range.
- 3) Building on Lake Front surrounded by mountain range. 25.9 x 18.2 cm.
- 4) Lucerne et le Pilate. [450]. 22.6 x 13.6 cm.
- 5) Switzerland. Castle of Chillon. February 4, 1913. 15.3 x 9.8 cm.
- 6) Switzerland. Castle of Chillon. February 4, 1913. [7473]. 26.2 x 15.8 cm.
- 7) Lucerne et le Righi. [44]. 22.5 x 13.8 cm.
- 8) 2 Photographs. Chemin de fer du Righi; House on hillside. [262]. 15.5 x 10.3 cm. + 15.5 x 10.3 cm. **[pictured]**
- 9) CH: De fer du Righi. [258]. 22.6 x 13.7 cm.
- 10) Cathédrale de Saint Pierre A Genève. [13]. 22.6 x 13.7 cm.



- 11) Duke of Brunswick Monument, Lake Geneva, Switzerland. 22.7 x 13.7 cm.
- 12) Statue de Jean Jacques Rousseau a Genève. [32]. 22.7 x 13.6 cm.
- 13) 2 photos. Eselwand Tunnel. Additional art of Pilatus Railway. [1027]. 15.2 x 9.8 cm. + 15.2 x 9.6 cm.
- 14) Lion de Lucerne. [48]. 22.1 x 13.7 cm.
- 15) Grindelwald, Switzerland. Glacier Supérieur. [2115]. 15.3 x 10 cm.



0031 Germany. *38 Prints on 30 Mat-Boards.* Germany: c. 1890. 37 albumen prints. Various sizes [listed below]. Mat-boards; occasional notation and chipping to boards, prints are untouched. Very good.

\$ 500

A collection of late-19th century prints of various locations in Germany. Includes monuments, villages, cities, and cathedrals. Released from the archives of Occidental College. Of particular interest are the multiple prints of Heidelberg Castle and the Friedrich Building, which was first restored around the time these photographs were taken. Other buildings, including the Palace of the Crown Prince and the Cologne Cathedral were badly damaged during World War II. Most of the other buildings and structures in the photos have been renovated, rebuilt, or replaced in the intervening years.

- 1) 2 photos. Baden. The Insel Hotel. + Interior courtyard. 12 x 19 cm. & 12 x 19 cm.
- 2) Heidelberg. 2 photos. Heidelberg University exterior + Heidelberg Student Jail w/graffiti. [pictured]
- 3) Heidelberg Castle, a Restoration [sketch]. 26 x 18 cm.
- 4) Heidelberg. Castle Courtyard. 21 x 26.5 cm.
- 5) Heidelberg. Castle Views from river. 26.5 x 21 cm. [pictured]

- 6) Cologne. Cathedral Interior of Choir. 31 x 24 cm.
 7) Cologne. Cathedral exterior from southeast. 31 x 24 cm.
 8) Berlin. Palace of the Crown Prince. The palace was heavily damaged by Allied bombing in World War II. Although it could have been repaired, the palace was demolished in 1950 by the German Democratic Republic authorities. Although, it was decided to rebuild the entire exterior of the palace in the original style. Scheduled to be done in 2019. 33.5 x 24 cm.



- 9) Cologne Cathedral. 32 x 24 cm.
 10) Freiburg Cathedral Belfry. 21 x 16 cm.
 11) Cologne Cathedral. West façade. 32 x 24 cm.
 12) Cologne Cathedral. 24 x 31 cm.
 13) 2 photos. Nuremberg. Hangman's bridge; Castle and surrounding village
 14) Cologne Cathedral. 18 x 22.5 cm.
 15) 2 photos. Nuremberg. Hans Sachs statue. 15.5 x 10 cm. + 15.5 x 10 cm.
 16) 2 photos. Lutherhaus Eisenach + Eisenach village. 15 x 10 cm. + 15 x 10 cm.
 17) Cologne Cathedral. 18 x 22.5 cm.

18) 2 photos: Richard Wagner. German Composer. Königl Bayer, Hof-Photograph, Hans Brand, Bayreuth signed in blind. Sketch of Richard Wagner Theater [1888]. 14.5 x 9.5 cm. & 10 x 15 cm.

19) Berlin. Equestrian statue of Frederick the Great.

20) Berlin, Brandenburg Gate. Late 19th century.

21) Nuremberg. 2 photos. Albrecht Durer statue + local neighborhood. The statue survived WWII, but the surrounding buildings did not.

22) Heidelberg. Heidelberg Castle courtyard.

23) Berlin, Germany. The Victory Column. 22 x 16.5 cm.

24) 2 photos. Bad Freienwalde & Storefront.

25) Berlin. Unter den Linden. Building w/Equestrian Statue of Frederick the Great.

26) Konstanz. Jan Hus Memorial Stone.

27) Munich. Bavaria Statue and Hall of Fame. München, Vorm Bruckmann signed in blind. Bavaria is the name given to a monumental, bronze sand-cast 19th-century statue in Munich, southern Germany.

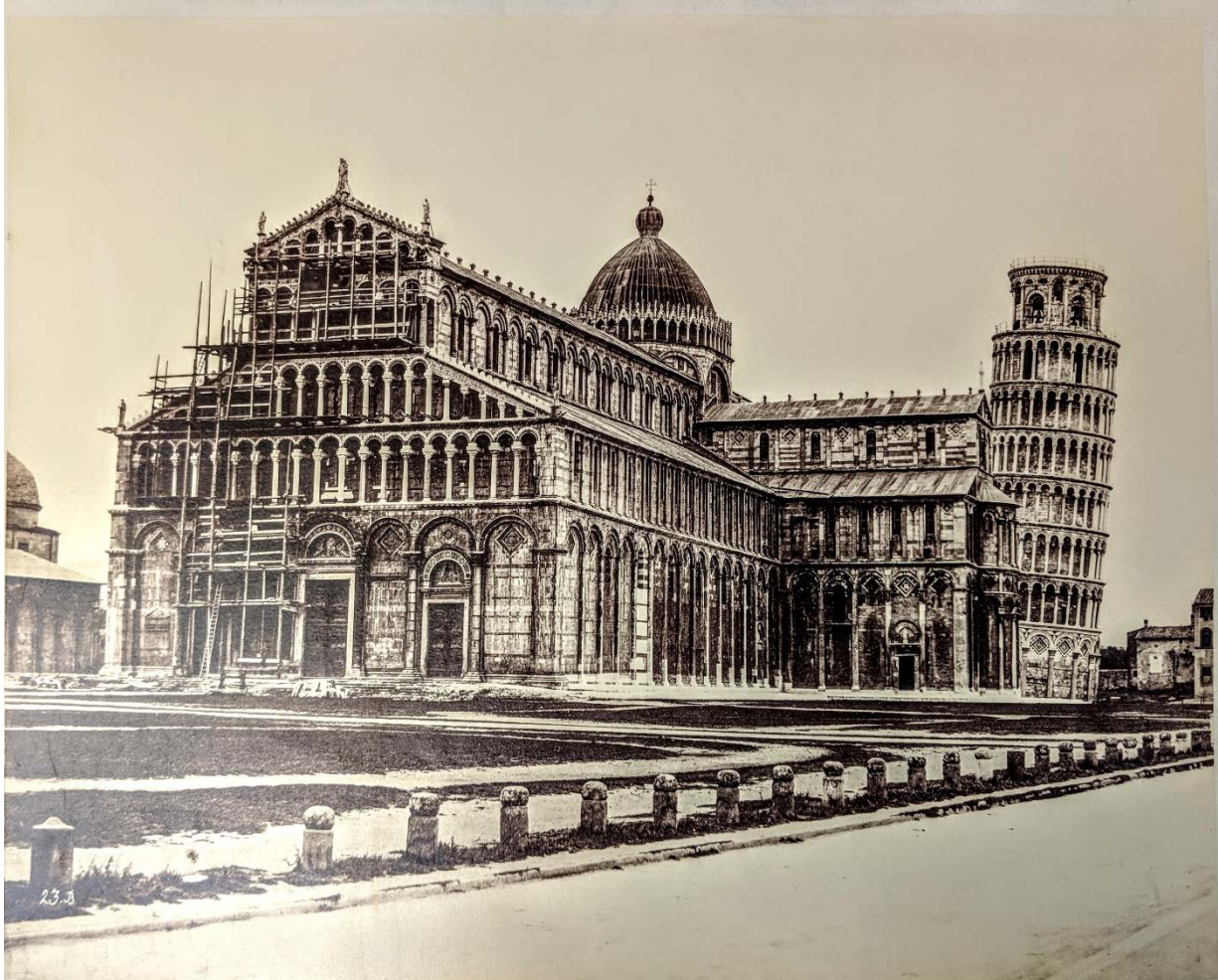
28) German National Monument on the Niederwald. 32 x 24 cm.

29) Heidelberg.
Heidelberg Castle.

30) Nuremberg. 2 images: St. Lorenz Cathedral, Schöner Brunnen Fountain (c.1870-1900).

[pictured]





0032 Italy. 5 Prints. Italy: c. 1890. 5 albumen prints. Various sizes, 25.5 x 20 cm. or larger. Mat-boards; occasional notation on boards, prints untouched. Very good.

\$ 200

A collection containing striking photographs of the Milan Cathedral and the Leaning Tower of Pisa, among other things.

- 1) Milan. Dettaglio della Cattedrale. [3907].
- 2) Siena Cathedral.
- 3) Pisa. Fountain and baptistry.
- 4) Pisa. Baptistry Interior with Niccolo Pisano's Pulpit. January 3, 1913.
- 5) Pisa. Cathedral and Tower. [pictured]



0033 France. *11 Prints.* Paris: c. 1890. 11 prints. Various sizes [listed below]. Mat-boards; occasional notation, some chipping to boards, prints are untouched. Very good.

\$ 180

A collection of photographs of sites and monuments in various cities in France, primarily Paris.

- 1) Hôtel tel de Ville Dijon, France. 10 x 14.5 cm.
- 2) Paris. Louvre, west court from Place du Carrousel. January 3, 1915. 26 x 34 cm.
- 3) Paris. Hôtel de Ville. 26 x 34 cm.
- 4) Paris. The Madeline. [443]. 21 x 26 cm.
- 5) Paris. The Luxembourg Palace. 26 x 34 cm.
- 6) Paris. Arc de Triomphe. [338]. 21 x 26 cm.

- 7) Paris. Madeleine Interior of Nare[?]. [495]. 20 x 26 cm.
- 8) Paris. Panthéon Façade. Signed: [Albert] Mansuy Phot. de la Ville de Paris 15.5 x 21 cm.
- 9) F. Morel [signed, photographer?]. Nice, 3. Rue du Pont Neuf. Cannes, 14. Rue d'Antibes. 16.5 x 21.5 cm.
- 10) Strasbourg Cathedral [sketch].
- 11) Strasbourg Cathedral.
- 12) Saint-Bénigne, ca Cathédrale de Dijon. Avant la Démolition de la Fléché. (Avril 1885). 18 x 23.5 cm.



0035 Chamounix-Mont-Blanc, France. 2 Prints. France: c. 1865. 2 albumen prints. Mat-boards. Very good.

\$ 125

2 early photographs of the Chamounix glacier in France.

- 1) Giorgio Sommer .4 mountaineers at the Mer de Glace, 1865. #13307. 25.6 x 20.6 cm. [pictured]

2) Chamounix, Mer de Glace. Panorama. c. 1890. #17650 26.3 x 16.3 cm.

0036 Caribbean. 8 prints. Caribbean: c. 1880. 8 Albumen prints. Various sizes, mostly 24 x 19 cm. Mat boards. Very good.

\$ 200

- 1) Five palm trees rise from the bushes into the sky.
- 2) Man sitting on donkey cart in front of a house. A woman watches from the background.
- 3) Man riding a donkey cart with two barrels through the shade of a date palm.
- 4) Smiling boy in worn thatch hat with feathers. The feet and tail-feathers of a bird (presumably dead) stick out of his partially unbuttoned shirt. Captioned "A Native." **[pictured]**



- 5) Flatts Village ,Bermuda. Two boys or young man in front of Wistowe building.
- 6) Plantation house.
- 7) Two men work at a quarry in the sun.
- 8) Fruit sellers – two women in costume of ca.1870-80s. Large group of [wine?] bottles in foreground. Note: pineapples, beets, sugar cane, bananas, Possibly from Martinique, in the Caribbean. **[pictured]**

0037 Sir Walter Scott. *2 prints.*
Edinburgh, c. 1890. 2 albumen prints.
Matte boards. Very good.

\$ 35

- 1) The Entrance Hall. Abbotsford; The Study, Abbotsford. Home of Sir Walter Scott. Monogram signed. [501]; [488].
- 2) Sir Walter Scott. Print of portrait engraving by Edward Mitchell.

0038 Pope Leo XIII. *1 Print.* Rome:
1892. 1 albumen print. Mat-boards.
Very good.

\$ 80

Pope Leo XIII in Papal mantum.

[pictured]



0039 Wilhelm von Kaulbach (artist). *12 Prints.* Germany: c. 1890. 12
albumen prints. Various sizes, mostly 20.7 x 17.1 cm. Mat-boards. Very good.

\$ 60

A collection of early photographs of works by Wilhelm von Kaulbach. Kaulbach was a German painter who gained renown as a muralist in Munich.

- 1) Wilhelm von Kaulbach (1804-1874). Crusaders before Jerusalem. [Photograph of painting].
- 2) Wilhelm von Kaulbach. Photograph of painting, "Woman and the Greeks".
- 3) Wilhelm von Kaulbach [painter]. Engenia.
- 4) Wilhelm von Kaulbach [painter]. Klasrichen. [7473].
- 5) Wilhelm von Kaulbach [painter]. Leonara.
- 6) Wilhelm von Kaulbach [painter]. Goethe in Weimar. 1864
- 7) Wilhelm von Kaulbach [painter]. Children in the Wood.
- 8) Wilhelm von Kaulbach [painter]. Hermann and Dorothea. Photograph of painting.
- 9) Wilhelm von Kaulbach [painter]. Woman in costume. Photograph of painting.

10) Wilhelm von Kaulbach. Mary Stewart and Elizabeth. Albumen print mounted on card.

11) Wilhelm von Kaulbach [painter]. Frederike.

12) Wilhelm von Kaulbach [painter]. The Promenade.

0040 Rome. Architecture. 38 Prints.

Rome: c. 1890. 38 albumen prints. Mostly 26 x 20 cm. Mat-boards. Some annotations on the boards (the prints themselves are untouched). Very good.

\$ 475

A variety of albumen prints taken in late 19th century Rome. Includes photos of various historical sites, as well as the city itself.

1) Pantheon con la Tomba di Vittorio Emmanuele. February 4, 1903. [1198].

2) St. Paul's outside the walls interior Nare [?]. January 3, 1914. 34 x 27 cm.

3) St. Peter's Exterior from the north. January 3, 1914. 33.5 x 25.9

4) Farnese Palace Exterior. January 3, 1914. [1081]. 25.5 x 20 cm.

5) Palazzo Farnese Cortile. January 3, 1914. [940]. 26.3 x 20.5 cm.

6) Villa Albani (1758) Garden Front. January 3, 1914. [1194]. 25.1 x 19.8 cm.

7) St. Trinita Façade and staircase. January 3, 1914. 35.5 x 26.5 cm.

8) Rome. Via del Corso. [4315]. **[pictured]**

9) Rome. Palazzo Quirinale. [4133].

10) Interno del Chiostro di S. Paolo.

11) Facciata di S. Giovann. [1069]. 25.8 x 20.5 cm.

12) Sant'Agnes in Agone. Circo Aggnale. [4054]. 25.8 x 20 cm.

13) Rome. Piazza del Ponolo. [78].



of



- 14) Vatican interior chamber.
- 15) Roma. La Confessione in S. Pierto. [4281A].
- 16) Scala Santa. [4112]. 25.8 x 20.1 cm.
- 17) Interno del Pantheon. [1037]. 25.7 x 20.2 cm.
- 18) Piazza delponolo al Pincio. [4118]. 26 x 20.2 cm.
- 19) Trinita dei Monti. [4128]. 26 x 20.3 cm.

- 20) Colonna Antonina. [4059]. 26 x 20.4 cm.
- 21) Interno Di S. Clemente. [1091]. 26.2 x 20.6 cm.
- 22) Column of Marcus Aurelins. February 4, 1914. [1082]. 26 x 20.4 cm.
- 23) Piazza S. Pietro, Obelisk and Colonnade. January 3, 1914. 35.5 x 26.6 cm.
- 24) Facciata di S. Paolo. Signed G. Sommer- Napoli. [4086]. 26 x 20.2 cm.
- 25) Loggia di Raffaello. Vaticano. [4149]. 25.9 x 20.2 cm.
- 26) Facciata di S. Pierto. [4070]. 25.7 x 20.3 cm.
- 27) Campidoglio. [1038]. 25.9 x 20.4 cm.
- 28) Building interior. 25.8 x 20 cm.
- 29) Tribuna di S. M. maggiore. [4084]. 26 x 20 cm.
- 30) Fontana del Mose Al Pincio. [1237]. 26 x 20.1 cm.
- 31) Fontana di Trevi. [4049]. 26 x 20.4 cm. **[pictured]**
- 32) Interno di S. M. Maggiore. 26 x 20.5 cm.
- 33) Arco di Constantino. [4017]. 26 x 20.5 cm.
- 34) Torre della Scimmia. [255]. 26 x 20.4 cm.
- 35) Foro Traiano. [4033]. 25.8 x 20.4 cm.
- 36) Monumento di Pio Vi in S. Pietro. [4274].
- 37) Interno di S. Paolo. [4087]. 26 x 20.2 cm.
- 38) Interno di S. Pietro. [74]. 26 x 20 cm.



0041 Rome. Ruins and Ancient Architecture. 20 Prints. Rome: c. 1890. 20 Albumen prints. Mostly 26 x 20 cm. Mat-boards. Originally from the archives of Occidental College, there are some annotations to the mat boards, but the prints themselves are untouched. Very good.

\$ 350

A collection of early albumen photographs of various Roman ruins and structures in and around the city of Rome. Many of these buildings have since experienced substantial renovations—these prints provide a glimpse of how they looked at the close of the 19th century.

- 1) Teatro Marcello. [4026]. 26 x 20.2 cm. pictured
- 2) Rome. Palatine Palace of the Caesars, the Bridge of Caligula. February 4, 1914. [966].
- 3) Rome. Piramide di Caio Cestio. [533].
- 4) Rome. Terme di Caracalla Frigitarium. [1115].
- 5) Rome. Tomba di Cecilia Metella. [4042].

- 6) Rome. Acquedoth. Panorama. [4044].
- 7) Basilico of Constantine. February 4, 1914. [1091]. 25.9 x 20.2 cm.
- 8) Arco di Tito. Il candelabro. [4020].
- 9) Tempio di Vesta (earlier reconstruction than the present version. Peasant man and woman sit at the fountain in the foreground. 26 x 20 cm.
- 10) Arco di Druso. [4023]. 26 x 20.5 cm.
- 11) Tempio di Minerva. [4061]. 26.1 x 20 cm.
- 12) Foro di Nerva. [4062]. 26 x 20.2 cm.
- 13) Bassorilievo, Foro Romano. Bas-relief of pig, sheep, and bull. [4142]
- 14) Columbarium on the Via Appia. February 4, 1914. [1062]. 25.9 x 19.9 cm.
- 15) Appia ve Chia. Ruins along the Appian Way. A man sits at the side of the road, while another stands and talks with him. [4040]. 26 x 20.3 cm. pictured
- 16) Palatino, casa paterna di Livia. [4174]. 26 x 20.3 cm.



- 17) Rupe Tarpea. [4230]. 26 x 20.1 cm.
- 18) Casa delle Vestali. [1179]. 26 x 20.7 cm. Via
- 19) Casa di Cola di Rienzi. [4145]. 26 x 20.5 cm.
- 20) Porta S. Sebastiano. [116]. 26 x 20.3 cm.

0042 Florence. *10 Prints.* Florence: c. 1890. 10 albumen prints on boards, mostly 26 x 20 cm. Mat-boards. From the Occidental College archives, with attendant notations on the boards. The prints are untouched. Very good.

\$ 225

A collection of early albumen prints of Florence, mostly historical sites. The image of the Palazzo Vecchio from across the square is particularly lovely.

1) Facciata della chiesa di S. marco, opera del 1780 di Giovachino Pronti. [3028].

2) Chiesa di S. Croce, e statua di Dante. [3033].

3) Panorama across the River Arno.

4) Cathedral, north side.

5) Pitti Palace from Boboli Gardens.

6) Palazzo Vecchio Cortile. [1440].

[pictured]



7) Museo di S. Marco cella del Savonarola. No. 14512. Desk of Girolamo Savonarola (1452-1498).

8) Palazzo Vecchio. [3024].

9) Portici Degli Uffizi costruiti sui disengo di Vasari. [3101].

10) Cappella dei Principi.

0043 Italy. Statuary. 34 Prints. Italy: c. 1890. 34 albumen Prints. Mostly 26 x 20 cm. Mat boards; some notations on the boards, prints untouched. Very good.

\$125

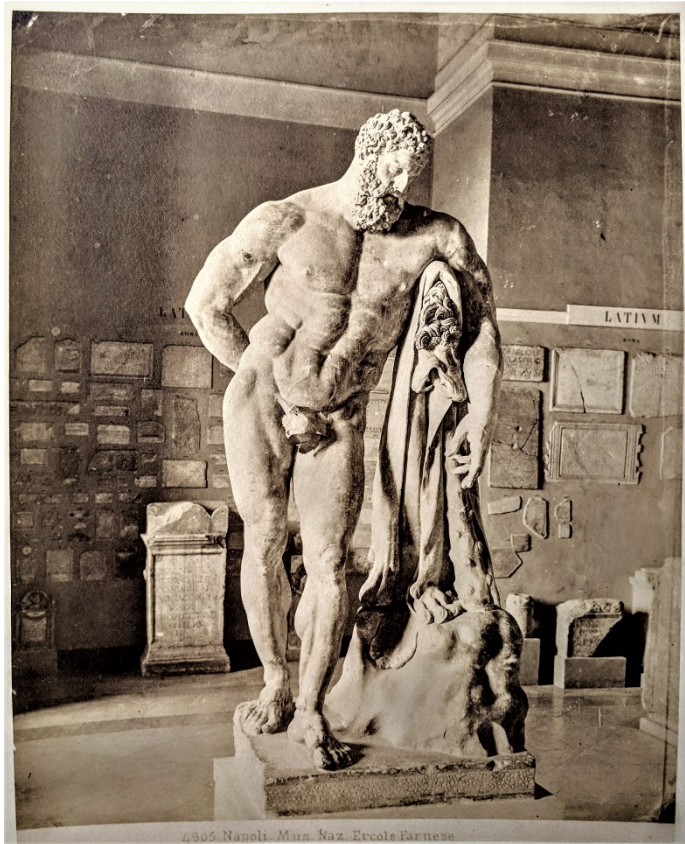
A collection of early albumen prints of important statues from all over Italy, but mostly from Rome and Florence.

All prints roughly 26 x 20 cm.



- 1) Rome. Fiume Nilo. Museo Vaticano. [pictured]
- 2) Napoli. Mus Naz Supplizio di Dirce. [4907].
- 3) Rome. Amore di Prassitele. Museo Capitolino.
- 4) Rome. Mercurio Museo Vaticano. 26 x 20 cm.
- 5) Rome. Bambino dell' Ara Coeli. [4315]
- 6) Rome. Vaticano. Dammosseno. [2545].
- 7) Rome. Augusto Giovine. Museo Vaticano. 1363
- 8) Rome. La Pietà di Michelangelo in S. Pietro. [4282].

- 9) Rome. Vaticano Sala delle Statue. [2552].
- 10) Rome. Dettaglio Monum: Stuardi. Parte inferiore. [4288].
- 11) Pompeii. Palazzo Spada
- 12) Rome. Creugante canova. Museo Vaticano. [90].
- 13) Rome. Mose di M. Angelo. S. Pietro in Vincoli. [Michelangelo's Moses]
- 14) Rome. Venere Capitolina. Museo Capitolino. [165].
- 15) Rome. Statu di S Pietro. [330].
- 16) Rome. Arianna. Museo Vaticano.
- 17) Rome. Cristo di M. Angelo. Chiesa Della Minerva. [Michelangelo's Risen Christ]
- 18) Rome. Vaticano Meleagro. [2542]
- 19) Rome. Antinoo. Museo Vaticano. [2211].
- 20) Rome. Fauno di Prassitele. Museo Capitolino. [167].
- 21) Rome. Vaticano, Riga.
- 22) Napoli. Mus Naz Ercole Farnese. [4905].
- 23) Rome. Monumento Paolo III in S. Pietro.
- 24) Rome. Mon: Rezzonico in S. Pietro.
- 25) Rome. Pieta del Bernini. Nel sotterraneo di S. Giov. in Laterano
- 26) Rome. Giovodi Ultricoli. Vaticano. [123]
- 27) Rome. Gladiatore. Morente. Museo Capitalino. [1504].
- 28) Rome. Pila dell'Acquasanta in S. Pietro.
- 29) Firenze. Galleria Pitti. Venere, celebre statua di Canova. [3206].
- 30) Firenze. Venere de' Medici. [3150]



31) Firenze. Accademia di belle arti. 503. Firenze. Monumento a Lorenzo del Medici duca d' Urbino; Michelangelo. [3102].

32) Firenze. Monumento a Giuliano de' Medici duca di Nemours. [3103].

33) Bologna, Giovanni. Cosimo de Medici. Florence. Piazza della Signoria. [1527].

0044 Rome. Paintings. 17 Prints. Rome, c. 1900. 17 prints on mat-boards. Mostly 26 x 20 cm. Occasional notation on boards, but the prints themselves are untouched. Very good.

\$ 75

A collection of early prints of paintings from various museums in Rome.

1) Roma. Vaticano. Comunione di S. Girolamo. Domenichino. Photograph of a painting. [2100].

2) Vaticano Madonna di Foligno Raffaello. [2002].

3) Vaticano Scuola di Atene Raffaello. [2062].

4) Barberini. La Fornarina. Raffaello.

5) Vaticano. Disputa del Sacramento. Raffaello.

6) Vaticano. Incendio di Borgo. Raffaello.

7) Vaticano. Giudizio finale. Michelangelo.

8) Vaticano. Sposalizio di S. Caterina. Murillo.

9) Mosaico delle Colombe. M. Canitolo.

10) Chiesa dei Cappuccini. S. Michele. G. Reni.

11) Corsini. Madonna e Bambino. C. Dolci.

12) Sistina Chapel. Sketch.

13) Panorama a volo d'uccella.

14) Basilica di S. Pietro. Battesimo. Carlo Maratta.

15) Vaticano. Trasfigurazione. Raffaello

16) Sistina Chapel ceiling.

17) Roma Gall Barberini. Beatrice Cenci. Guido Reni. Photograph of painting. [3781].



0045 Florence. Paintings. 21 Prints. Florence: c. 1890. 21 albumen photos. Mostly 26 x 20 cm. Mat-boards. From the archives of Occidental college, occasional notation on the boards, prints unmarked. Very good.

\$ 80

A collection of early photos of artwork from various Florentine galleries, primarily the Pitti and Uffizi.



- 1) Galleria Pitti. Ritratto di Van-Ryn Rembrandt, dipinto da lui stesso. Photograph of painting. [2967].
- 2) Galleria Uffizi. La Vergine che adora il bambino Gesù; Antonio Correggio. [2194].
- 3) Galleria Pitti. Ritratto muliebri detto la Bella di Tiziano; Tiziano. [2948].
- 4) Galleria Pitti. San Casimiro figlio del re di Polonia Casimiro IV; Carlo Dolci. Photograph of a painting. [2897].
- 5) Firenze. Galleria Uffizi un Ancield del Tabernacold (Beato Angelico). [2666].
- 6) Galleria Pitti. La Deposizione di Croce. Fra Bartolommeo.
- 7) S. Croce, Cappella Bardi. L'Esequie di S. Francesco. Giotto.
- 8) Galleria Pitti. La Madonna detta del Granduca. Raffaello Sanzia.
- 9) Galleria Uffizi. Dettaglio del Ritratto di donna detta la Flora. Tiziano Vecellio.
- 10) Galleria Uffizi. La Vergine col Divin Figlio. Carlo Cignani.
- 11) Galleria Pitti. La Madonna detta della Seggiola. Raffaello Sanzio.
- 12) Galleria Uffizi. Ritratto di Tiziano Vecellio. Dipinto da lui stesso.
- 13) Galleria Uffizi. Il Redentore. Carlo Maratta.
- 14) Galleria Pitti. La Visione di Ezechiello. Raffaello Sanzio. [pictured]
- 15) Galleria Uffizi. Dettaglio della Fornarina. Raffaello.
- 16) Galleria Pitti. Vergine col Figlio detta Madonna del Murillo. Bartolommeo Murillo.
- 17) Galleria uffizi. Ritratto di Elizabetta le Brun. dipinto da lei stessa.

- 18) Galleria Pitti. Le Tre Parche. Michelangelo Buonarroti.
- 19) Galleria Uffizi. La Madonna detta del Cardellino; Raffaello Sanzio
- 20) Galleria Pitti. Cleopatra che si uccide con l'aspide. Guido Reni.
- 21) Museo s. Marco. Annunziata della Vergine; Beato Angelico.



0046 Venice. 3 Prints. Venice: c. 1890. 3 albumen prints. Various sizes. Some notation on boards, prints unmarked. Very good.

\$ 75

Three early prints of Venice, showing the city as it was at the end of the 19th century.

- 1) Venetian Arsenal, Porta Magna. 33 x 25 cm.
- 2) Monument of Antonio Canova – Chiesa Dei Frari. [234]. 26 x 20 cm.
- 3) Doge's Palace. [263]. 26 x 20 cm. Photo taken from the Piazza San Marco, which is empty apart from three men seated on the steps of the Lion of Venice column in front of the Palace. [pictured]

0047 Verona. 6 Prints. Verona: c. 1890. 6 albumen prints. Mostly 26 x 20 cm.
Some notation on the mat boards, the prints themselves are untouched.
Very good.

\$120

A collection of early albumen prints of Verona, showing the city as it was at the end of the 19th century. The images of the Basilica of San Zeno and the Piazza delle erbe are particularly fine.

- 1) Piazza delle Erbe. Late 19th century. pictured
- 2) Basilica of San Zeno. [6714].
- 3) Orto dell' Antico orfanatrofio delle Franceschine. Tomba di Giulietta. Interior. [18769].
- 4) Piazza Bra. [18767].
- 5) Plazzo del Consiglio. [6706].
- 6) Orto dell' Antico Orfanatrofio delle Franceshine. Tomba di Giulietta. Exterior. (Coperta nel secolo Attuale). [18768].





5174. Pompeii. Panorama dei Nuovi Scavi

0048 Pompeii. 2 Prints. Pompeii: c. 1890. 2 albumen prints. 26 x 20 cm. White mat-boards. Very good.

\$ 40

2 early albumen prints of the ruins of Pompeii as they appeared at the close of the 20th century.

1) Panorama dei Nuovi Scavi. [5174]. [pictured]

2) Sirada di Stabbia. [1236].

0049 Prague. 5 Prints. Prague: c. 1890. 5 albumen prints. Mostly 26 x 20 cm. Mat-boards. Occasional notations on boards. Very good.

\$ 100

5 photos of Prague from the late 19th century. The images of the Old Jewish Cemetery and the St. Vitus Cathedral are particularly nice.



1) Old Jewish cemetery. Late 19th century. [\[pictured\]](#)

2) The Powder Tower, with storefronts. c. 1880.

3) Charles Bridge, Prague Castle in background. Late 19th century. [\[pictured\]](#)

4) Church of Our Lady before Tyn. Column of Virgin Mary in foreground. c. 1880. [\[pictured\]](#)

5) St. Vitus Cathedral. 21.2 x 15 cm.



0050 Misc. Art. 27 albumen prints on mat-boards. Europe: c.1890. 27 prints. Mostly 26 x 20 cm. From the archives of Occidental College, with occasional notation on boards, the prints themselves are untouched. Very good. \$ 80

0051 European Landscapes and Villages. [11 large albumen prints on 9 mat boards.] Europe: c. 1890. 12 prints. Mostly 26 x 20 cm. From the archives of Occidental College, with occasional notation on the boards, the prints themselves remain untouched. Very good. \$ 150

The subjects include two harbor towns, a mountain village, a castle on a hill, and other scenes from turn of the century western Europe. [\[pictured\]](#)

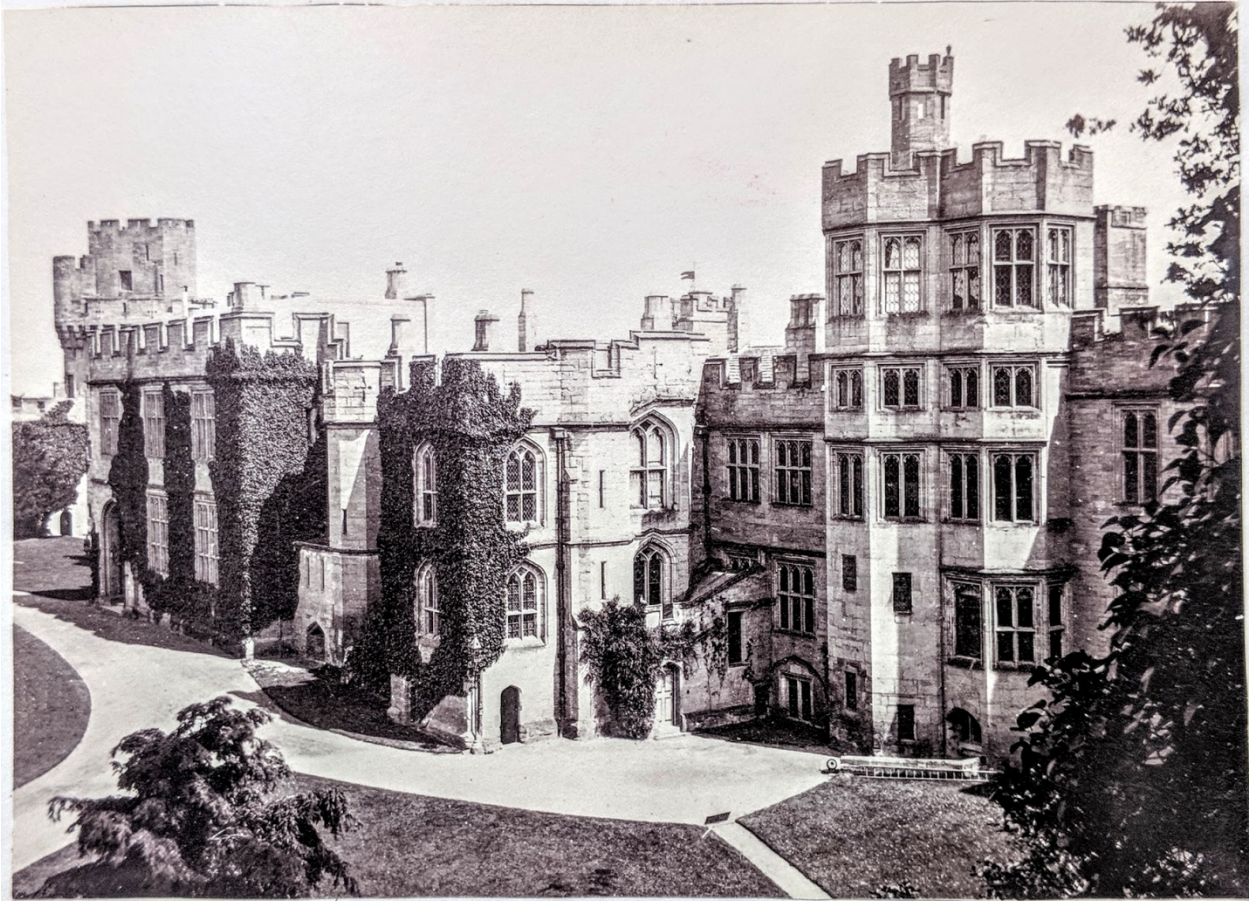
0052 European Churches. 13 Prints on 10 Mat-boards. Europe: c. 1890. 13 prints. Mostly 26 x 20 cm. 10 white mat-boards. Occasional notation on the boards, the prints themselves are untouched. Very good. \$ 150

A collection of lovely photos of unidentified European churches at the end of the 19th century, including some interesting examples of gothic and byzantine architecture. [\[pictured\]](#)

0053 European Villages and Cities circa 1890. 21 Prints on 15 Mat-boards. Western Europe, c. 1890. 21 prints. Mostly 26 x 20 cm. 15 mat boards. Occasional notation on the boards, while the prints remain untouched. Very good. \$ 150

A collection of late 19th century photos of various European buildings, streets, and cities. [\[pictured\]](#)





0054 European Castles and Manors. 7

Prints. Western Europe: c. 1890. 7 albumen photos. Mostly 26 x 20 cm. 6 Mat-boards. Very good.

\$ 100

A collection of unattributed albumen prints of European castles. [\[pictured\]](#)



0055 European Cathedral Interiors. 10

Prints. Europe: c. 1890. 10 albumen prints. Various sizes. Mat-boards. Very good.

\$ 75

A collection of Albumen prints from the late 19th century showing the interiors of various churches around Europe. [\[pictured\]](#)



0056 European Historical Sites. 7 Prints on 6 Mat-boards. Europe: c. 1890. 7 albumen prints on 6 boards. Mostly 26 x 20 cm. Very good.

\$ 80.

A collection of albumen prints showing various European historical sites.

0057 Vienna. 3 Prints. Vienna: c. 1890. 3 albumen prints. Mostly 26 x 20 cm. Mat-boards Very good.

\$ 60

3 prints of Vienna from the late 19th century, showing the city as it was.



1) Vienna. Maria Theresa Statue.

2) Vienna. City Hall, Parliament Building, and other government buildings in Vienna, Austria. Tracks for a horse-drawn trolley pass in front of the buildings. A trolley car is on the tracks at the bottom of the picture. Twin steeples of a church. 26.5 x 20.5 cm. [pictured]

3) Sketch of the city of Vienna.



0157 Rome. *Cimitero di Cappuccini Ossuary.* Rome, c. 1890. Albumen Print. 26 x 20 cm. Mat-board. Very good.

\$ 100

A late 19th century photo of the skull-decorated crypt at the fourth chapel of the *Santa Maria della Concezione dei Cappuccini* church in Rome.

0163 Rome. *Priest in Courtyard of Chiostro di San Giovanni.* Rome, c. 1900. Albumen print. 26.2 x 20.6 cm. Very good.

\$ 75

A Vatican priest (possibly a cardinal) in full dress attire speaks with a boy leaning against the well at the center of the courtyard. The Chiostro di San Giovanni has since been renovated, and both the courtyard and garden look dramatically different today.





0188 Neue Photographische Gesellschaft [studio]. *Gemäldegalerie Alte Meister*. Dresden: 1895. 1 albumen print. 24.2 x 19.5 cm. Mat-board; large tear to the board, print undamaged. Very good.

\$ 45

Neue Photographische Gesellschaft mbH was a German photography company which operated from 1894 to 1948. It was one of the largest postcard and photograph companies in turn of the century Europe.

Art Gallery and Court of the Zwinger. Signed by Verlag der Neuen Photogr. [3558].

0228 EDWIN, John Jabez. *1 Print*. Paris: c. 1890. 1 print. 35 x 26 cm. Mat-boards, notation on boards, small tear to bottom of phot. Print signed JGE. Good.

\$ 20

Paris. Tour de St. Jacques de la Boucherie. Mumford. Signature [JG.E]. 26 x 34 cm.



0693 Giorgio Sommer (1834–1914). Man with mule. Europe: c. 1890. 1 albumen print. 25 x 18.2 cm. Mat-boards. Very good.

\$ 175

Sommer was a German-born photographer, active from 1857-1888. [\[pictured\]](#)



0277 Dr. Hermann Heid, Wien (1834-1891). *Hotel Metropole*. Vienna: c. 1870.
1 Albumen print. 27 x 20 cm. Mat-boards. Very good.

\$ 30

Heid was an Austrian photographer, manufacturer, and publisher. He was among the members of the photographic society in Vienna. [77]. **[pictured]**



0394. Honolulu, Hawaii. *Iolani Palace.* Hawaii: c. 1890. 1 albumen print. 23.6 x 18.8 cm. Mat-board; small chip to lower corner, notation on boards, print untouched. Very good.

\$ 175

An early photograph of the royal residence of the rulers of Hawaii, built in 1879.



0424 Mosque of Sultan Hassan. *1 Print.* Cairo: c. 1900. 1 albumen print. 33.5 x 26.5 cm. Mat board; notation on boards, print untouched. Very good. \$ 250

Panorama of the mosque and surrounding neighborhood. One of the largest mosques in the world, it was completed in 1359. The surrounding neighborhood was substantially less developed than it is today.



0348 Florence. *Porta del Paradiso (Ghiberti)*. Florence: c. 1890. 1 print. 25.5 x 19.6 cm. Mat-board. Very good.

\$ 80



408 Paris. *Monument à Léon Gambetta.* Paris: c. 1880. Albumen print. 27.7 x 21.8 cm. Mat-board. Very good. Rare.

\$ 100

Beautiful column and statuary, with pedestrians and horses in the foreground. The column and surrounding statues are currently dismantled and stored at the Louvre.

Gambetta (1838-1882) was the 37th Prime Minister of France, active during and after the Franco-Prussian War.



0484 *Caribbean street scene.* c. 1900. Caribbean, c. 1890. Albumen print. 23.5 x 18.2 cm. Mat board; board edges worn, print untouched. Very good.

\$ 175

Late 19th century multi-ethnic community, with police officer in middle-ground.



0442 Sommer, Giorgio [photographer]. *Bersagliere*. Naples, c. 1875. Albumen print. 25 x 19.6 cm. Mat-board. Very good.

\$ 150

Portrait of a Neapolitan Bersagliere. The Bersaglieri are a corps of the Royal Italian Army, recognizable by the black capercaillie feathers they use to decorate their hats and helmets. Giorgio Sommer was one of the most prolific and important photographers of the 19th century. Born in Frankfurt, he worked primarily out of Naples and Rome.



0575 Maurizio Eduard Lotze (1809-1890) [photographer]. *Market at Piazza delle Erbe*. Verona: c.1870. 1 albumen print. 25.5 x 19.8 cm. Mat-board. Very good.

\$100

The Piazza delle Erbe in Verona, during a market day in the late-19th century. Lotze was a German painter, artist, photographer, and studio owner



0626. *Vintage European portrait of Woman.* Europe: c. 1880. Albumen print. 13.4 x 9.2 cm. Mat-board. Jewelry accented in red and gold [hand-colored]. Very good. \$ 50 Possibly by Giorgio Sommer.



0695 *Rembrandt statue, Amsterdam.* Amsterdam, c. 1890. 1 albumen print.
17.4 x 11.9 cm. Mat-board. Very good.

\$ 50

A gardener stands in front of the statue, with rake. 'Café du Parc' and Meubel Fabrick signs are visible in the background.

JEFF WEBER RARE BOOKS

1815 Oak Ave, Carlsbad CA 92008

Phone: 323 333 4140
weberbks@pacbell.net

MEMBER: ABAA ILAB



FOR MORE PICTURES, PLEASE REFER TO OUR WEB-SITE
TO SEE MANY ITEMS ILLUSTRATED:

www.WeberRareBooks.com

On the site are more than 12,000 antiquarian books in the fields of science, medicine, Americana, classics, books on books and fore-edge paintings.

Our inventory is available for viewing by appointment.

TERMS ARE AS USUAL. Net 30 days for clients with established accounts. Those needing extended terms should inquire. Shipping & insurance are extra.

SERVICES: Appraisals for books, archives or manuscripts – inquiries welcome. We buy and sell antiquarian books, manuscripts, photographs.