



Fig. 1 – The architect’s personal portfolio, inscribed
Meine Arbeiten | Ludwig Wirth (365 × 420 mm)

Wirth, Ludwig

Regensburg 1879 – 1946 Garmisch-Partenkirchen

The architect’s drawings and other documentation for projects planned or built in Dresden, 1913–1935, preserved in his own portfolio.

Dresden 1913–1935

OBLONG PORTFOLIO (365 × 420 mm), a collection of original drawings (many dated and signed by the architect), positive photostats of original drawings, gelatin silver photographs, and printed matter; together with

Guratzsch (Curt), *Ludwig Wirth. Mit einer Einleitung von Curt Guratzsch*, [series] *Der Deutsche Architekt* (Berlin, Leipzig & Vienna: Deutsche Architektur-Bücherei, 1929), 255 × 200 mm, paginated I–IX (3), 1–20, publishers’ red cloth binding.

PROVENANCE Ludwig Wirth (1879–1946) — anonymous consignors, Zisska & Kistner, Auktion 44/II: ‘Handschriften, Autographen, Seltene Bücher’, Munich, 27 October 2004, lot 1139

CONDITION contents in very good state of preservation; hinges of portfolio worn, rubbed, leather tie partly intact.

HOUSED in a contemporary portfolio of morocco-grained beige cloth, lettering-piece on front cover inscribed *Meine Arbeiten* | *Ludwig Wirth*; interior lined with decorative paper; leather tie on fore-edge. Preserved in a modern cloth box (by the Brockman Bindery).

THE PERSONAL ARCHIVE of the German architect Ludwig Wirth, documenting with original drawings and photographs seventeen of his design projects, including ephemeral exhibition installations and architecture, industrial buildings, high-rise office and apartment buildings, low-cost urban row housing and suburban villas.

The materials date from *circa* 1913 to *circa* 1935, decades during which scarcity of materials, regulations prohibiting construction of non-war related buildings, devastating inflation, and economic depression, strongly discouraged building. All architects struggled to build. Predictably, just four of the seventeen projects collected in this portfolio were realised; everything else remained in design stage. Wirth’s most celebrated building is the Dresden Stadthaus (1923), designed in the Expressionist style tempered by traditional (historicist) elements, and one of few surviving monuments of early architectural modernism in Dresden (destroyed 1945; rebuilt 1958–

1961, 1999–2000). The designs for several of his unrealised projects are of particular interest, as these projects seem to be otherwise unknown.

Altogether, the materials in this portfolio album provide many unfamiliar glimpses of Dresden – the Dresden built and lost in 1945, and unbuilt Dresden, the city that might have been.

Ludwig Wirth

Born in Regensburg on 14 February 1879, Ludwig Wirth matriculated at Technische Hochschule München, and obtained employment thereafter as ‘Regierungs-Bau-meister in den Landbauämtern Amberg und Regensburg’.¹ At an uncertain date, he met the gifted and dynamic architect Hans (Jakob) Erlwein (1872–1914), who became his mentor. Also Bavarian, and also a graduate of TH München (1893–1896), Erlwein was appointed in November 1904 Stadtbaurat of Dresden, and a year later Leiter des Hochbauamts. He established a large office and inaugurated a frenetic programme, proposing 127 projects within ten years.²

The date of Wirth’s arrival in Dresden is unknown. He was perhaps working there already at the time of the first Internationale Hygiene-Ausstellung (6 May–31 October 1911), for which he wrote – under the supervision of Erlwein – a twenty-five page essay on ideal family dwellings (published 1914),³ he was certainly working in Dresden in 1913, when he entered a competition – open only to architects born in, or then resident in Saxony – to build a Chamber of Commerce (Handelskammer) in Dresden-Plauen (● I). In 1913–1914, Wirth assisted Erlwein on projects for the exhi-

Abbreviated references: GÖBEL Günter Göbel, *Hans Erlwein, der Dresdner Stadtbaurat* (Dresden 1996) — GURATZSCH Curt Guratzsch, *Ludwig Wirth. Mit einer Einleitung von Curt Guratzsch* (Berlin, Leipzig & Vienna 1929) — HELAS Hans Erlwein: *Stadtbaurat in Dresden 1905–1914: eine Ausstellung der Landeshauptstadt Dresden aus Anlass des 125. Geburtstages des Architekten am 13. Juni 1997 im Lichthof des Neuen Rathauses zu Dresden*, catalogue by Volker Helas (Dresden 1997) — KLOSS Günter Kloss, *Hans Erlwein (1872–1914): Stadtbaurat in Bamberg und Dresden* (Petersberg 2002) — THIEME-BECKER Ulrich Thieme and Felix Becker, *Allgemeines Lexikon der bildenden Künstler* 36, edited by Hans Vollmer (Leipzig 1947), p.102.

¹ THIEME-BECKER (based on information communicated by the architect).

² Some twenty-six architects are known to have worked at one time or another in Erlwein’s Dresden ‘Entwurfsatelier’ (KLOSS pp.18, 21). *Allgemeines Künstler-Lexikon*, 34 (Munich & Leipzig 2002), pp.406–408.

³ *Kleinwohnungen*, Ausstellungswerk der Internationalen Hygiene-Ausstellung Dresden 1911, III. Haus und Wohnung, Teil 2 (Dresden: Meinhold, 1914). A copy is in the Deutsches Hygiene-Museum Dresden, Bibliothek, Standort Hyg. AID 8280.

bition ‘Das Deutsche Handwerk, Dresden 1915’⁴ and for a fire station in Würzburgerstraße, Dresden-Plauen (● II); and he acted as Bauleiter on a fire station designed by Erlwein and built in Louisenstraße, Dresden-Neustadt (● III). In May 1914, Wirth designed the German pavilion at the ‘Esposizione Internazionale di Marina, Igiene Marinara e Mostra Coloniale’ in Genoa (● IV). In August 1914 he was conscripted.⁵

When Wirth returned to the Dresden Hochbauamt, the Expressionist architect Hans Poelzig (1869–1936) was city architect. In 1919, Wirth published *Kleinwohnungen* (● IX), an elaboration of his 1911 essay, in response to the housing shortage caused by the War. It considers both multi-storey apartment buildings and single family terraced houses, with strong emphasis on public health issues such as light, ventilation, and provision of bathtubs (‘transportablen Volksbadewannen’, as well as tubs with fixed plumbing, are proposed). On the title-page, Wirth is identified as ‘Stadt-bauamtman, Abteilungsvorstand im Entwurfsatelier des städtischen Hochbauamtes’.

Although he produced numerous projects, Poelzig succeeded in building very little in Dresden, and in 1920 he departed in despair for Berlin. During Poelzig’s tenure, Wirth occupied himself with projects for a concert hall (● V), and for exhibition buildings situated in or alongside the Großer Garten (● VI ● VII ● VIII). The designs for the concert hall are executed in coloured chalks and show more of Poelzig’s influence than others in the album; it could be they are associated with Poelzig’s unrealised ‘Konzertsaal für Dresden’ (1918).⁶ Around this time, Wirth also developed projects for a chemical analysis laboratory on Nötnizer Straße in Dresden (● X) and a rectory in Neu Berzdorf (● XI). In 1920 he entered a competition to build a National Hygiene Museum on a site next to the Zwinger (● XII).⁷ A newspaper article commending Wirth’s entry (*Dresdner Nachrichten*, 16 October 1921) identifies him as ‘Stadtbauamtman’.

By this time Wirth had commenced the project on which his reputation now rests: the Stadthaus on the Theaterstraße (● XIV), a new administration building for the city of Dresden, accommodating a public library and reading room (Städtischen Bücherei und Lesehalle). It was the first monumental building erected in Dresden after the War. Wirth’s design is a somewhat simplified version of Poelzig’s project of 1917–

⁴ KLOSS p.54: ‘Ausgeführt durch den Architekten Ludwig Wirth’.

⁵ KLOSS p.148.

⁶ Details of this project are lacking; cf. Julius Posener, *Hans Poelzig: reflections on his life and work*, translated by Christine Charlesworth (New York 1992), p.272.

⁷ Albert Hofmann, ‘Der Wettbewerb um die neuen Museumsbauten in Dresden’ in *Deutsche Bauzeitung* 54 (no. 41, 22 May 1920), pp.233–235, 241–244.

a residence for working women and girls;²⁵ a project for the redevelopment of the north side of the Altmarkt in Dresden;²⁶ and a branch of the low-price chain-store Ehape AG in Dresden-Löbtau'.²⁷

About 1935, Wirth returned to native Bavaria, and settled in Garmisch-Partenkirchen.²⁸ Two further projects are recorded: a residence for General der Flieger Karl Eberth at Graf-Dürckheim-Straße 10, Steingaden (Oberbayern) in 1938–1939;²⁹ and a Landhaus in Garmisch-Partenkirchen, built for Generalfeldmarschall Wilhelm List (1880–1971).³⁰ Some plans for suburban villas could have been intended for either Dresden or Bavaria (● XVIII).

Ludwig Wirth died on 18 August 1946.³¹

Portfolio Contents

I

1913: Competition project for the Handelskammer, Dresden-Plauen

The competition was advertised February–June 1913 and attracted 71 entries.³² Prizes were announced 18 September 1913: C.E. Stephan and E. Möbius were awarded first prize, and W. Lossow and M.H. Kühne second prize. A design by Lossow & Kühne was built 1913–1915.

● ‘Anzeigenbeilage zu Deutsche Konkurrenzen’ in *Deutsche Konkurrenzen vereinigt mit Architektur Konkurrenzen* 29 (1913), Heft 345, pp.1–31. The entry of ‘Dipl.-Ing. Ludwig

²⁴ GURATZSCH pl.12 (elevation and plan) ‘Siedlung in Dresden-Plauen. Ansicht der Hauptfassade’ and ‘Grundriss der Gesamtgruppe’.

²⁵ GURATZSCH pl.13 (drawings) ‘Heim für erwerbstätige Frauen und Mädchen. Aussenansicht’ and ‘Ansicht eines Einzelzimmers’; pl.14 (drawings) ‘Grundriss einer 2-Zimmer-Wohnung’ and ‘Ansicht einer 2-Zimmer-Wohnung’.

²⁶ GURATZSCH pl.18 (drawing) ‘Entwurf für die Aufstockung der Nördl. Häusergruppe des Altmarktes in Dresden’.

²⁷ GURATZSCH pl.19 (drawing) ‘Entwurf für das Wohn- und Geschäftshaus der “Ehape” in Dresden-Löbtau’.

²⁸ THIEME-BECKER.

²⁹ THIEME-BECKER. Now a retreat for Protestant military personnel (<http://www.ekd.de/militaerseeelsorge/Englisch/felder.html>).

³⁰ THIEME-BECKER.

³¹ This date is given by KLOSS p.160.

³² *Wettbewerbe: Konkurrenz-Nachrichten. Beiblatt zu den Deutschen Konkurrenzen* 29 (Leipzig: Seeman, 1913), pp.1473, 1504, 1511, 1516.

Werth [*sic*], Reg.-Baumeister in Dresden’ is reproduced pp.30–31 (view, four elevations, two sections, three plans). Loosely inserted is a printer’s proof of p.30 (verso blank) annotated in ink *Konkurrenz* [*sic*]: *Handelskammer Plauen i.V.* (a misspelling of Wirth’s name corrected by pen).

Wirth’s submission was praised, but not awarded a prize. A passage on p.2 is highlighted in red pencil: ‘Bei der zweiten Sichtung werden ausgeschieden 17 Nummern und zwar wurde hierbei in eine strenge Beurteilung der Fassaden und Grundrisse eingetreten; dabei mußten insbesondere auch die Entwürfe Nr. 32 “Hansa” [the code name for Wirth’s project] and Nr. 60 “Handelskammer” fallen trotz hervorragender künstlerischer Reife, weil sie im Grundriß den an ein Handelskammergebäude zu stellenden Anforderungen nicht entsprechen, bezw. weil Nr. 32 auch die Vorschriften bezüglich der Kostensumme wesentlich überschreitet’.

II

circa 1913: Project for a Feuerwache, Würzburgerstraße/Hofmühlenstraße, Dresden-Plauen

Designed by Erlwein (HELAS p.13; KLOSS, Werkverzeichnis 29, dated ‘um 1905’ but conventionally circa 1913; GÖBEL p.99 no.48: ‘Feuerwache Plauen (Projekt)’, undated).

● grey card mount (350 × 400 mm), lettered in black ink *Feuerwache: Plauen [Project]*, with five positive photostat copies of drawings attached: (a) elevation lettered (top) *Feuerwache Plauen*. and (bottom) *Nordansicht (Würzburgerstraße)*. (112 × 163 mm), (b) plan lettered *Feuerwache Plauen*. | *Erdgeschoß* (114 × 143 mm), (c) plan lettered *Feuerwache Plauen*. | *1. Obergeschoß* (116 × 96 mm), (d) two elevations lettered respectively *Feuerwache Plauen*. | *Ost-(Hof-)Ansicht* and *Westansicht (Hofmühlenstraße)* (142 × 110 mm), (e) plan lettered *Feuerwache Plauen*. | *2. Obergeschoß* (115 × 96 mm)

KLOSS p.82 reproduces copies of (a) and (d) in the Stadtplanungsamt der Landeshauptstadt Dresden (‘Foto 1922’).

III

1913–1916: Hauptfeuerwache, Louisenstraße 14–16, Dresden-Neustadt

Designed by Erlwein (KLOSS, Werkverzeichnis 144; GÖBEL p.99 no.46), construction supervised by Wirth ‘bis zu seiner Einberufung zum Kriegsdienst im I. Weltkrieg [August 1914]’, thereafter by Bernhard Geißler and Richard Louis (KLOSS p.148). Destroyed in 1945.

● grey card mount (350 × 400 mm), lettered *Hauptfeuerwache | Neustadt*. | *ausgeführt 1914.*, with four positive photostat copies of drawings attached: (a) sections lettered (top) *Feuerwache Louisenstrasse*. | *Aufnahmeplan* and (middle) *Längsschnitt durch den Turnhalle* | *Masstab 1:50*. | *Reserve Fahrzeug Halle*. with (below) scale (115 × 170 mm), (b) view (150 × 112 mm),

(c) elevation lettered (top) *Feuerwache Louisenstraße. | Aufnahmeplan.* and (bottom) *Hofansicht.* with scale (115 × 170 mm), (d) elevation lettered (top) *Feuerwache Louisenstraße. | Aufnahmeplan.* and (bottom) *Straßenansicht.* with scale (115 × 170 mm)

Justus Haarmann, ‘Technische Bauten der Stadt Dresden von Stadtbaurat Prof. H. Erlwein†’ in *Die Industriebau. Monatschrift für die Künstlerische und technische Förderung aller Gebiete industrieller Bauten* 5 (1914), Heft 11, pp.237–239, reproduces a copy of (b) and also superseded plans and elevations. *Dresdner Kalender 1920. Jahrbuch über das künstlerische, geistige und wirtschaftliche Leben in Dresden*, edited by Johann Erich Gottschalch (Dresden 1919), pp.75, 78. HELAS p.8 Abb.3 reproduces a copy of (b), crediting it to Erlwein’s collaborator Paul Riegen, with date 1913 (Stadtplanungsamt der Landeshauptstadt Dresden). KLOSS pp.149–150 reproduces copies of (c) and (d) also in the Stadtplanungsamt der Landeshauptstadt Dresden (‘Foto 1922’).

- grey card mount (350 × 400 mm), with four positive photostat copies of drawings attached: (a) plan lettered (top) *Feuerwache Louisenstraße. | Aufnahmeplan. | Erdgeschoß.* with scale (120 × 140 mm), (b) plan lettered (top) *Feuerwache Louisenstraße. | Aufnahmeplan. | 1. Obergeschoß.* with scale (120 × 140 mm), (c) plan lettered (top) *Feuerwache Louisenstraße. | Aufnahmeplan. | 2. Obergeschoß.* with scale (120 × 140 mm), (d) plan lettered (top) *Feuerwache Louisenstraße. | Aufnahmeplan. | 3. Geschoß.* with scale (120 × 140 mm)

KLOSS p.150 reproduces a copy of (c) in the Stadtplanungsamt der Landeshauptstadt Dresden (‘Foto 1922’).

IV

1914: German Pavilion, Esposizione Internazionale di Marina, Igiene Marinara e Mostra Coloniale, Genoa

Exhibition installation (March–November 1914), featuring standing skeletons of a male, female, and child, a table displaying skulls and bones, two other tables each with twelve microscopes for the observation of specimens, a display case containing models of the lungs and other viscera, and graphical displays on the walls.

- brown card mount (355 × 405 mm, with photographer’s credit *Sciutto | Genova* blind-stamped lower right), lettered in black ink *Internationale Hygiene Ausstellung: Genua 1914 | Deutscher Pavillon*, with attached photograph of an exhibition hall interior, inscribed (lower right) *ent[wurf] L Wirth 1914* (216 × 288 mm)

- brown card mount (355 × 405 mm, with photographer’s credit *Sciutto | Genova* blind-stamped lower right), lettered in black ink *Internationale Hygiene Ausstellung: Genua 1914 | Deutscher Pavillon*, with attached photograph of same exhibition installation (from another viewpoint), inscribed (lower right) *ent[wurf] L Wirth 1914* (216 × 288 mm); a rough plan in pencil on the mount verso (presumably the exhibition hall, one room marked by a cross)

V

1918: Project for the auditorium of an Ausstellungs-Pallast

Three designs for the decoration of a concert hall having two levels of boxes, proscenium, and elevated stage.

grey card mount (270 × 350 mm, ink-stamped *Paul Fischer Hofphotograph Breslau*), to which are hinged over each other three sheets of tracing paper:

- sheet of tracing paper (255 × 327 mm), interior view executed in graphite, black and coloured chalks, inscribed *Ausstellungs Pallast | Saal Skizze*, signed and dated (lower right) *21.2.18 L W*

- sheet of tracing paper (255 × 327 mm), signed and dated (lower right) *22.2.18 L W*

- sheet of tracing paper (255 × 327 mm), signed and dated (lower right) *23.2.18 L W*

VI

circa 1918: Project for an Ausstellungs-Pallast, Lenné-Straße, Dresden

Project for cultural venue on a site bordered by the Lenné-Straße, Bürgerwiese, and Albrecht-Straße, with a ‘Wasser-Bassin’ and gardens behind. The plan shows a four-storey building with area ‘ca. 6600 qm’.

- grey card mount (350 × 390 mm), to which is attached by two brass clips a folded sheet of tracing paper (475 × 368 mm), with site plan and two elevations executed in pencil (roof coloured in green chalk)

VII

1918–1919: Project for a Restaurant, Großer Garten, Herkulesallee, Dresden

Project for a restaurant with elliptical dining room, semicircular anteroom, symmetrical buffets, and vestibules, cloakrooms, etc. The intended site, between a proposed Wagen-Halte-Platz on the Herkulesallee and a water feature in the gardens, is shown in a drawn bird’s-eye view, together with an adjoining coffee pavilion and a church.

wrapper of brown paper (270 × 350 mm), lettered on upper cover *Entwurfs-Skizzen | für ein | Garten-Restaurant | entw[urf] L Wirth | Mai 1919*, securing by three brass clips five sheets of tracing paper (last tipped to card mount), another sheet of tracing paper with drawn bird’s-eye view centre-folded and loosely inserted

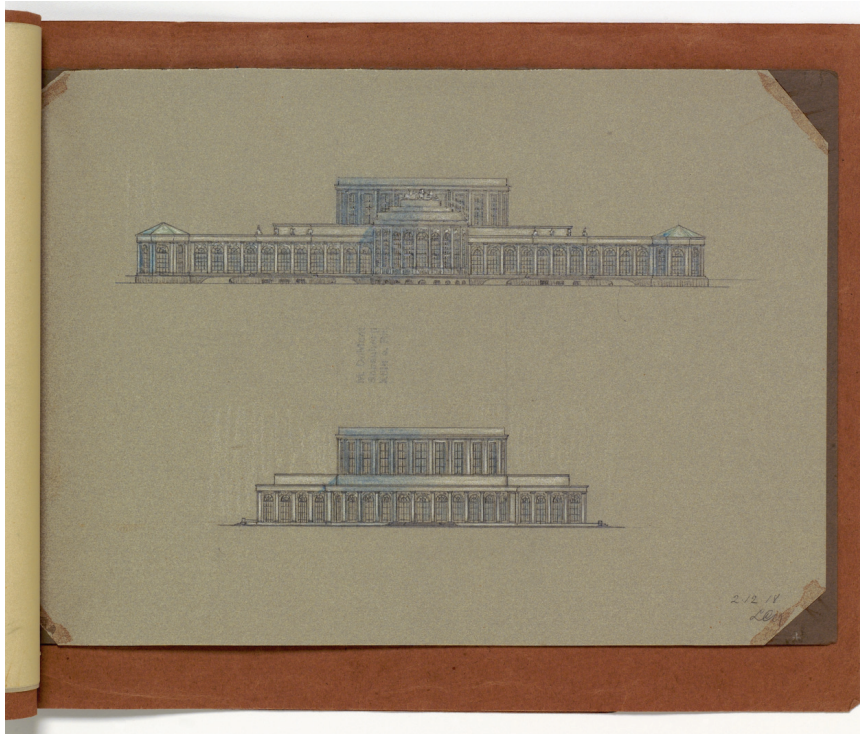


Fig. 2 Project (• VII) – Restaurant, Großer Garten, Dresden (255 × 320 mm)

- sheet of tracing paper (255 × 340 mm), drawn plan executed in pencil, indicating the *Grossersaal*, *Kleinersaal*, *Diele*, *Kleider-Ablage*, and *Buffet*, signed and dated (lower right) 2.12.18 L Wirth
- sheet of tracing paper (255 × 340 mm), drawn plan executed in pencil, a revision of the preceding design with adjoining *Wirtschaftshof*, lettered (above) *Saalgeschoss* and (below) *Wagen-Halte-Platz*
- sheet of tracing paper (255 × 340 mm), drawn plan executed in pencil, lettered *Untergeschoss* with scale *M: 1: 500*
- sheet of tracing paper (255 × 340 mm), drawn section executed in pencil
- sheet of tracing paper (255 × 320 mm), two drawn elevations, executed in pencil, blue chalk,

heightened with white, signed and dated (lower right) 2.12.18 LW, tipped on card mount. **Fig. 2**

- sheet of tracing paper (208 × 385 mm), drawn bird’s-eye view, executed in pencil

VIII

1919: Project for an *Austellungs-Restaurant*, Großer Garten, Dresden

wrapper of brown card (265 × 375 mm), lettered in red on upper cover *Austellungs-Restaurant*, securing by two brass clips ten sheets of tracing paper:

a.

An elaboration of Wirth’s December 1918 project for a ‘Garten-Restaurant’ (• VII), introducing a performing space for an orchestra between the elliptical dining room and semicircular ante-room, and an adjoining building housing a ticket office, post office, further toilets and cloakrooms. The ‘Grossersaal’ has dimensions 32 × 23 m. Wirth annotates the first plan with the dimensions of the auditoriums of the ‘Gewerbevereinshaus’ and ‘Concerthaus’ in Dresden, Hubert Stier’s *Haus der Gesellschaft der Freunde in Breslau* (1878), and Franz Schwechten’s *Philharmonie in Berlin-Kreuzberg* (1888–1889).

- sheet of tracing paper (255 × 330 mm), drawn plan executed in pencil, lettered (upper left) *Skizze | für ein | Austellungs-Restaurant* and (centre) *Ober-Geschoss*, scale *M 1: 500*, signed and dated (lower left) 10.11.19 L Wirth
- sheet of tracing paper (255 × 330 mm), drawn plan executed in pencil, lettered (upper left) *Skizze | für ein | Austellungs-Restaurant* and (centre) *Haupt-Geschoss*, north point, signed and dated (lower left) 6.11.19 L. Wirth
- sheet of tracing paper (255 × 330 mm), drawn plan executed in pencil, lettered (upper left) *Skizze | für ein | Austellungs-Restaurant* and (centre) *Unter-Geschoss*, scale *M. 1: 500*, signed and dated (lower left) 8.11.19 L Wirth

b.

A revision of project (a), dated a month later, reorienting the ‘Grossersaal’ from East-West to North-South, enlarging the performing space for the orchestra and adding a ‘Stimmzimmer’.

- sheet of tracing paper (255 × 330 mm), drawn plan executed in pencil (evidently the ‘Ober-Geschoss’), signed and dated (lower right) L Wirth Dez 19
- sheet of tracing paper (255 × 330 mm), drawn plan executed in pencil (evidently the ‘Haupt-Geschoss’, indicating the dimensions of the *Grossersaal* as 600 sq. metres), and two adjoining rooms (each 170 sq. metres), signed and dated (lower right) L Wirth Dez 19

- sheet of tracing paper (255 × 330 mm), drawn plan executed in pencil, lettered (upper left) *Wirtschafts-Geschoss* and showing the cellar, signed and dated (lower right) *L Wirth Dez 19*
- sheet of tracing paper (255 × 330 mm), two drawn elevations executed in pencil, lettered (top) *Strassen-Seite* and (bottom) *Garten-Seite*, signed and dated (lower right) *L Wirth Dez 19*
- sheet of tracing paper (255 × 330 mm), drawn plan executed in pencil (evidently the 'Haupt-Geschoss'), a revision of the above plan with monumental flights of stairs, scale 1 : 500, signed (lower right) *L Wirth*

c.

Elevations and plans of an adjoining structure, a coffee-house to be situated on the Herkules-Allee, with two terraces descending to an ornamental pond (shown in the bird's-eye view included in • VII):

- sheet of tracing paper (255 × 330 mm), three drawn elevations executed in pencil and green chalk, designated (top to bottom) *Ansicht gegen das Wasserbecken, Kaffee M. 1: 500, Ansicht von der Herkules-Allee*.
- sheet of tracing paper (255 × 330 mm), two drawn plans executed in pencil, blue and green chalks, designated (top to bottom) *Grundriss v. Hauptgeschoss, Kaffee M. 1: 500, Grundriss vom Untergeschoss*

IX

1919: *Die Kleinwohnung und ihre Grundrissformen*

- Ludwig Wirth, *Die Kleinwohnung und ihre Grundrissformen... Mit 31 Textabbildungen* (Berlin: Verlag von Wilhelm Ernst & Sohn, 1919), 240 × 165 mm, paginated (4) 1–56, printed buff-yellow printed wrappers. **Fig. 3**

This copy was perhaps added to the album at later date, as the title-page is inkstamped (in violet) [crowned eagle] | *Zivalarchitekt* | *Josef Fischer* | *Architekt Z.V. (B.D.A.)* | *Baden bei Wien* | *Wilhelmsring 17. Fernsprecher 206*

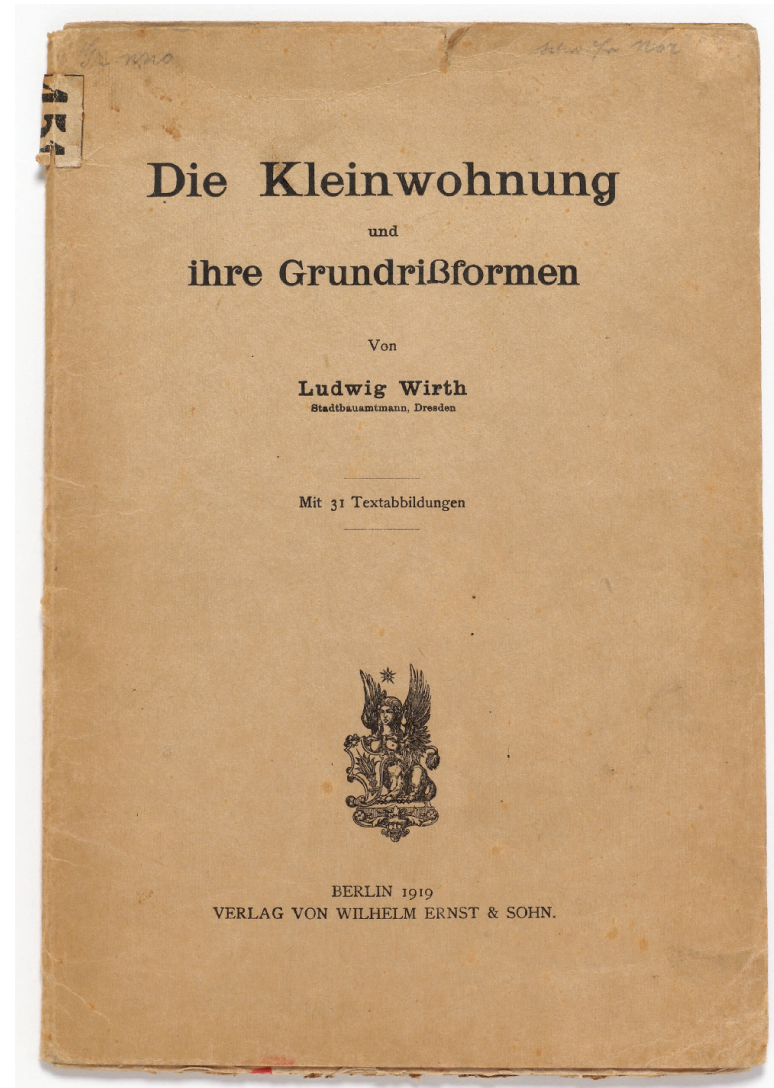


Fig. 3 (• IX) – Only edition of Wirth's work on ideal family dwellings (240 × 165 mm)

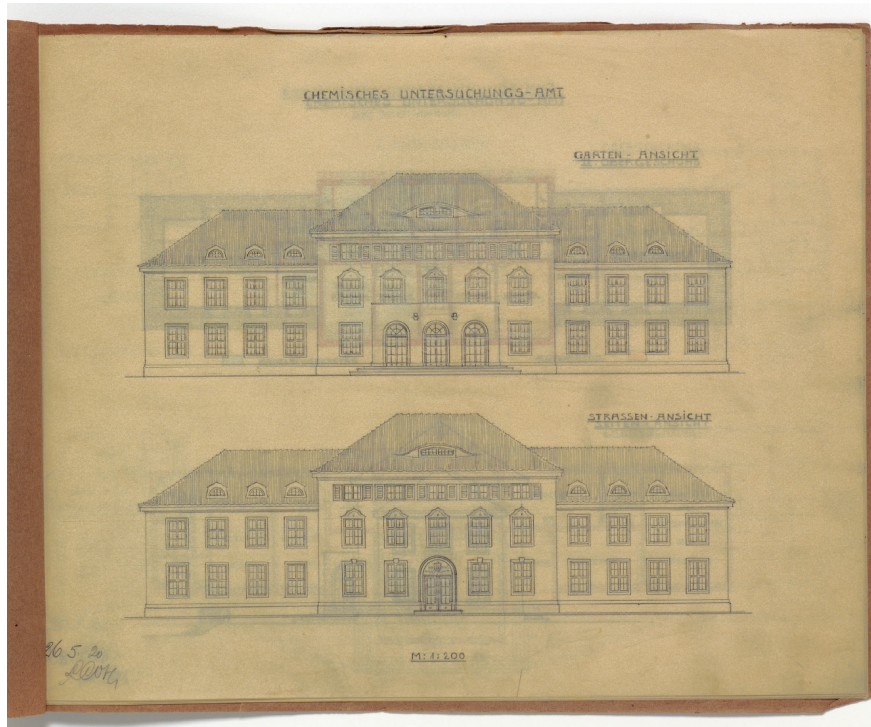


Fig. 4 Project (• X) – Offices for the Chemische Untersuchungsamt der Stadt Dresden (255 × 320 mm)

X

1920: Project for the Chemische Untersuchungsamt, Nötnitzer-Straße, Dresden

A project by Erlwin for the same client is recorded by KLOSS pp.6, 154 (Werkverzeichnis 158).

a.

- blue card mount (200 × 280 mm), inscribed (upper left) *Studie zu einem Neubau für d. Chem-Unters Amt in Süd-Viertel*, with a positive photostat copy of a drawn view (108 × 148 mm), signed on the mount (bottom right) *entw[urf] L Wirth*

b.

wrapper of brown paper (265 × 335 mm), lettered on its upper cover *Studien-Skizzen | für das | Chemische Untersuch.-Amt.*, securing by two brass clips seven sheets of tracing paper:

- sheet of tracing paper (255 × 320 mm), two drawn elevations executed in pencil, lettered (top to bottom) *Chemisches Untersuchungs-Amt, Garten-Ansicht, Strassen-Ansicht*, with scale *M: 1: 200*, signed and dated 26.5.20 *L Wirth* **Fig. 4**

- sheet of tracing paper (255 × 320 mm), two drawn plans executed in pencil and red chalk, lettered (top to bottom) *Chemisches Untersuchungs-Amt, II. Obergeschohs* ('Kanzlei-Secretär' indicated in blue chalk, 'Aufwärter' indicated in yellow chalk), *Seiten-Ansicht*, signed and dated 28.5.20 *L Wirth*

- sheet of tracing paper (255 × 320 mm), two drawn plans executed in pencil and red chalk, lettered (top to bottom) *Chemisches Untersuchungs-Amt | Ohne Dienstwohnung, I. Obergeschohs, Erdgeschohs*, signed and dated 25.5.20 *L Wirth*

- sheet of tracing paper (255 × 320 mm), two drawn plans executed in pencil and red chalk, lettered (top to bottom) *Chemisches Untersuchungs-Amt, I. Obergesch, Erdgeschohs*, signed and dated 17.5.20 *L Wirth*

- sheet of tracing paper (255 × 320 mm), drawn plan and drawn elevation executed in pencil, lettered (top to bottom) *Chemisches Untersuchungs-Amt, Dachgeschohs, Seiten-Ansicht*, indicating directions (left) to 'Stadt' and (right) 'Nötnitzer-Str.', signed and dated 21.5.20 *L Wirth*

- sheet of tracing paper (255 × 320 mm), two drawn plans executed in pencil, lettered (top to bottom) *Chemisches Untersuchungs-Amt, I. Obergesch., Erdgeschohs*, signed and dated 14.5.20 *L Wirth*

- sheet of tracing paper (255 × 320 mm), two drawn elevations executed in pencil, lettered (top to bottom) *Chemisches Untersuchungs-Amt, Strassen-Ansicht, Garten-Ansicht*, signed and dated 20.5.20 *L Wirth*

XI

1920: Project for a Pfarrhaus, Neu Berzdorf

Project for a two-storey, three bedroom rectory in the newly-established mining settlement of Neu Berzdorf.

- sheet of tracing paper (330 × 255 mm), drawn elevations, section, and plans executed in pencil, lettered (top to bottom) *Neu Berzdorf | Pfarr-Haus, Tal-Seite and Berg-Seite, Erdgeschohs and I. Obergeschohs*, scale *M: 1: 200*, signed and dated 31.5.20 *L Wirth*

XII

1920–1921: Competition project for a National Hygiene-Museum, Dresden

Project for a new cultural centre on the Stahlstraße of the Zwinger incorporating a National Hygiene Museum. The competition attracted nearly 200 entries; see H. de Fries, 'Wettbewerb Hygiene-Museum, Dresden' in *Wasmuths Monatshefte für Baukunst und Städtebau* 7 (1922–1923), pp.39–64. 'Der Vorschlag des Dresdner Stadtbauamtmanns Wirth umfasst im Wesentlichen die Beibehaltung des alten Kulturbereichs mit dem Zwingerteich und den Wallanlagen, die Schaffung eines zur Elbe hin orientierten "neuen Kulturzentrums", welches das Hygiene-Museum beinhalten sollte, zusammen mit einem groß angelegten Schmuckplatz am Elbufer'.³³

wrapper of brown paper (345 × 400 mm), lettered *Na. Hy. Mu.*, containing the items listed below, either sewn in, or secured by two brass clips. Pasted to inside upper wrapper is an evaluation of Wirth's project, 'Das neue Kulturzentrum am Zwingerteich' (subscribed 'W.B. '), clipped from *Dresdner Nachrichten*, no. 488, 16 October 1921.

- fragment of a printed map of Dresden, dated 1904 (530 × 485 mm), on which Wirth indicates in coloured ink the area of his proposed museum
- fragment of a printed map of Dresden, dated 1904 (530 × 485 mm), on which Wirth indicates in coloured ink the area of his proposed museum
- fragment of a printed map of Dresden, dated 1904 (525 × 485 mm), on which Wirth indicates in coloured ink the area of his proposed museum
- brown card mount (360 × 290 mm), to which are hinged two drawn plans executed in pencil on tracing paper, (a) evidently the 'Untergeschohs' (116 × 300 mm), (b) *Erdgeschohs* with scale *M. 1: 500* (120 × 300 mm)
- brown card mount (360 × 290 mm), to which are hinged two drawn plans executed in pencil on tracing paper, (a) *II. Obergeschohs* (120 × 300 mm), (b) *I. Obergeschohs* with scale *M. 1: 500*, signed *entw[urft] L Wirth* (120 × 300 mm)
- brown card mount (360 × 290 mm), to which are hinged (a) positive photostat copy of a drawn view (85 × 162 mm), (b) drawn elevation executed in pencil on tracing paper, lettered *Das National-Hygiene-Museum: am Zwinger | Nach dem I. Bauabschnitt*, signed and dated *17.1.21 L Wirth* (107 × 300 mm) **Fig. 5**



Fig. 5 Project (• XII) – National-Hygiene-Museum, Dresden (mount 360 × 290 mm)

- sheet of tracing paper (485 × 330 mm), drawn city plan, indicating the position of the proposed building on its site, executed in pencil, pink and blue coloured chalk, 'Devrient-Str.' and the Elbe indicated

XIII

1922: Project for a Studenthaus, Mommsenstraße 13–15, Dresden

A Studenthaus designed by Stadtbaurat Paul Wolf was completed in 1925;³⁴ compare *Der*

³³ Sabine Schulte, 'Das Deutsche Hygiene-Museum in Dresden von Wilhelm Kreis. Biographie eines Museums der Weimarer Republik', Dissertation, University of Bonn, 2001, p.94 (<http://www.baufachinformation.de/literatur.jsp?dis=2004089009928>).

³⁴ Paul Wolf, 'Der Neubau des Dresdner Studentenhauses' in *Das Buch der Stadt Dresden, 1926* (Dresden 1926), pp.175–178; Falk Hensel, 'Der Wiederbeginn an der Technischen Hochschule Dresden 1945: die Karrieren von Kurt Beyer und Willy Gehler', Magisterarbeit,

Städtebau. Monatsschrift für die künstlerische Ausgestaltung der Städte nach ihren Wirtschaftlichen, Gesundheitlichen und Sozialen Grundsätzen 18–19 (1922), p.120 Abb.108: 'Mensa academica für die Studentenschaft der Technischen Hochschule in Dresden. Stadtbaurat Paul Wolf (unter Mitwirkung von Baudirektor Wirth)'.

a.

mechanical reproductions (ferroallic process?) of drawn plans, elevations, and a section, each sheet with identical captions (top centre) *Neubau eines Studenten-Hauses | in Dresden*, scale *M. 1 : 200*, (below left) *Bearbeitet:* (below right) *Dresden | Juni [19]22* with signature *L Wirth*, the seven sheets of paper gathered by two brass clips:

- sheet (208 × 330 mm), plan lettered *Erdgeschohs*, identifying the rooms, and stating their size in sq. metres (additional lettering as above)
- sheet (208 × 330 mm), plan lettered *Untergeschohs*, identifying the rooms (additional lettering as above)
- sheet (208 × 330 mm), plan lettered *I. Obergesch.*, identifying the rooms (additional lettering as above)
- sheet (208 × 330 mm), elevation lettered *Strassenseite* (additional lettering as above)
- sheet (208 × 330 mm), elevation lettered *Gartenseite* (additional lettering as above)
- sheet (208 × 330 mm), two sections lettered *Schnitt A–B* and *Seiten-Ansicht* (additional lettering as above)

b.

• grey card mount (410 × 350 mm), lettered *Studentenhaus: Dresden*, to which are hinged three positive photostat copies of drawings: (a) view, oversigned in black ink *L Wirth* (90 × 168 mm), (b) three elevations and a section, lettered (top to bottom) *Gartenansicht*, *Seitenansicht | Schnitt A–B*, *Strassenansicht*, with scale *Mass-Stab 1: 100*, and caption *Der Dresdener Hochschulverein* [original signed *Prof. Dr. Ing. [Willy] Gehler*] | *Bearbeitet im Juli 1922* [original signed *Wilhelm Wohrmann, Herman Koch*] | *Ausgefertigt Dresden D. 11 Juli 1922* [original signed *L Wirth*] (165 × 105 mm), (c) two plans, lettered (top) *Erdgeschoss* and bottom *Sockelgeschoss*, with the same caption

GURATZSCH p.2 another copy of (a) (without Wirth's signature).

Technische Universität Dresden, 2001, p.40; Reiner Pommerin, *Geschichte der TU Dresden: 1828–2003* (Cologne 2003), pp.106, 154.



Fig. 6 Project (• XIV) – Early design for the Stadthaus (mount 200 × 280 mm)

XIV

1922–1923: Stadthaus an der Theaterstraße 11–13, Dresden

The building was partially destroyed 7 October 1944, totally destroyed 13–14 February 1945; restored 1958–1961, 1999–2000.³⁵ Oswin Hempel, 'Das neue städt. Verwaltungsgebäude am Queckbrunnen, Modell v. Wirth' in *Dresdner Woche*, 1922, Heft 8, pp.8–9.

• blue card mount (200 × 280 mm), mount inscribed on recto (upper left) *Studie zu einem Stadthaus an der Marien-Brücke* | *entw[urf] L Wirth* with photostat copy of a drawn view (100 × 162 mm), verso of mount inscribed *Abb. 7 | Ludwig Wirth Stadthaus an der* [illegible] **Fig. 6**

Early version of the project, not as built.

³⁵ For other images of the Stadthaus, see GURATZSCH pl.1; <http://www.das-neue-dresden.de/stadthaus-dresden1923.html>; <http://www.bildindex.de> (*q.v.* Künstler – Wirth, Ludwig).



Fig. 7 Project (● XIV) – Architectural model of the Stadthaus (mount 275 × 210 mm)



Fig. 8 Project (● XIV) – Interior views of the Stadthaus (mount 290 × 360 mm)

● grey card mount (350 × 400 mm, verso ink-stamped *Paul Fischer Hofphotograph Breslau*), lettered (centre) *Stadthaus Theaterstrasse* with (a) gelatin silver photograph of the architectural model (90 × 60 mm), (b) positive photostat copy of a drawn plan lettered (centre) *Stadthaus Theaterstrasse | Erdgeschoss.*, scale cancelled in pencil (c) gelatin silver photograph of the architectural model (90 × 80 mm), (d) positive photostat copy of a drawn plan lettered (centre) *Stadthaus Theaterstrasse | 1. Obergeschoss.*, scale cancelled in pencil (e) positive photostat copy of a drawn plan lettered (centre) *Stadthaus Theaterstrasse | 4. Obergeschoss* and scale *M. 1: 100*

The photograph of the architectural model (c) and plans (b) and (d) are reproduced by Karl Großmann, 'Das neue Dresdner Stadthaus' in *Zentralblatt der Bauverwaltung* 42 (24 June 1922), p.310.

- brown card mount (310 × 345 mm), with a gelatin silver photograph of the architectural model (185 × 273 mm), pencil drawing on mount verso
- brown card mount (275 × 210 mm), with three gelatin silver photographs of the architectural model (75 × 130 mm, 100 × 100 mm, 100 × 65 mm) **Fig. 7**
- brown paper mount (290 × 360 mm), lettered *Stadthaus Theaterstrasse* and signed on mount *L Wirth*, with (a) gelatin silver photograph captioned *a. Bücher-Lesesaal* (118 × 170 mm), and (b) gelatin silver photograph captioned *b. Treppenhhaus* (of the Städtischen Bücherei and reading room) (225 × 162 mm) **Fig. 8**
- brown paper mount (290 × 360 mm), lettered *Stadthaus: Theaterstrasse* with (a) gelatin silver photograph captioned *a. Treppenhhaus* (170 110 mm), and (b) gelatin silver photograph captioned *b. Kleiderablage* (112 × 168 mm)
- brown paper mount (360 × 288 mm), lettered *Stadthaus: Theaterstrasse | Städt. Bücherei und Lesehalle* with two gelatin silver photographs (120 × 170 mm, 117 × 165 mm) jointly captioned (right) *Bücherausgabe mit Blick in den Bücherspeicher*
- brown card mount (215 × 260 mm), with another gelatin silver photograph of the book stacks (120 × 170 mm)

XV

1928: Großkraftwagenhalle für die Kraftverkehr Freistatt Sachsen A.-G., Tharandter Straße, Dresden-Löbtau

GURATZSCH p.vii: 'Die Großkraftwagenhalle ist eine schöpferischen Taten Ludwig Wirths. Sie ist, wie die Aufnahmen zeigen – zu den Innenansichten muß man sich einen mattgrünen Ton der Wände hinzudenken – die reine Abstraktion auf den Zweck. Aber aus der Vertiefung in den Zweck heraus hat Wirth hier eine ganze Reihe originaler Lösungen gefunden, die den Kraftwagen-Zweckbau entscheidend umformen helfen werden. Auf dem Bilde ist von diesem großartig ineinandergreifenden System der Aushilfen, von dieser technischen Strategie freilich nur eins, nämlich die Einrichtung der Revisionsgruben zur Prüfung des Untergestells der Wagen nach der Reinigung zu sehen. Nicht haben die praktikablen Einrichtungen zum Tanken, nicht die Feuersicherungen und Alarmvorrichtungen Platz gefunden.'

- brown card mount (355 × 360 mm), ink-stamped on verso *Architekt B.D.A. Ludwig Wirth | Stadtbaudirektor A.D.* and pencil inscription *Kraftverkehr Freistaat Sachsen A.G. | Großkraftwagenhalle Dresden-Löbtau | Blick von der Waschhalle in die | Wagenhalle mit [illegible]*, with gelatin silver photograph of the 'Waschhalle' (165 × 230 mm)

GURATZSCH p.9 reproduces the same photograph.

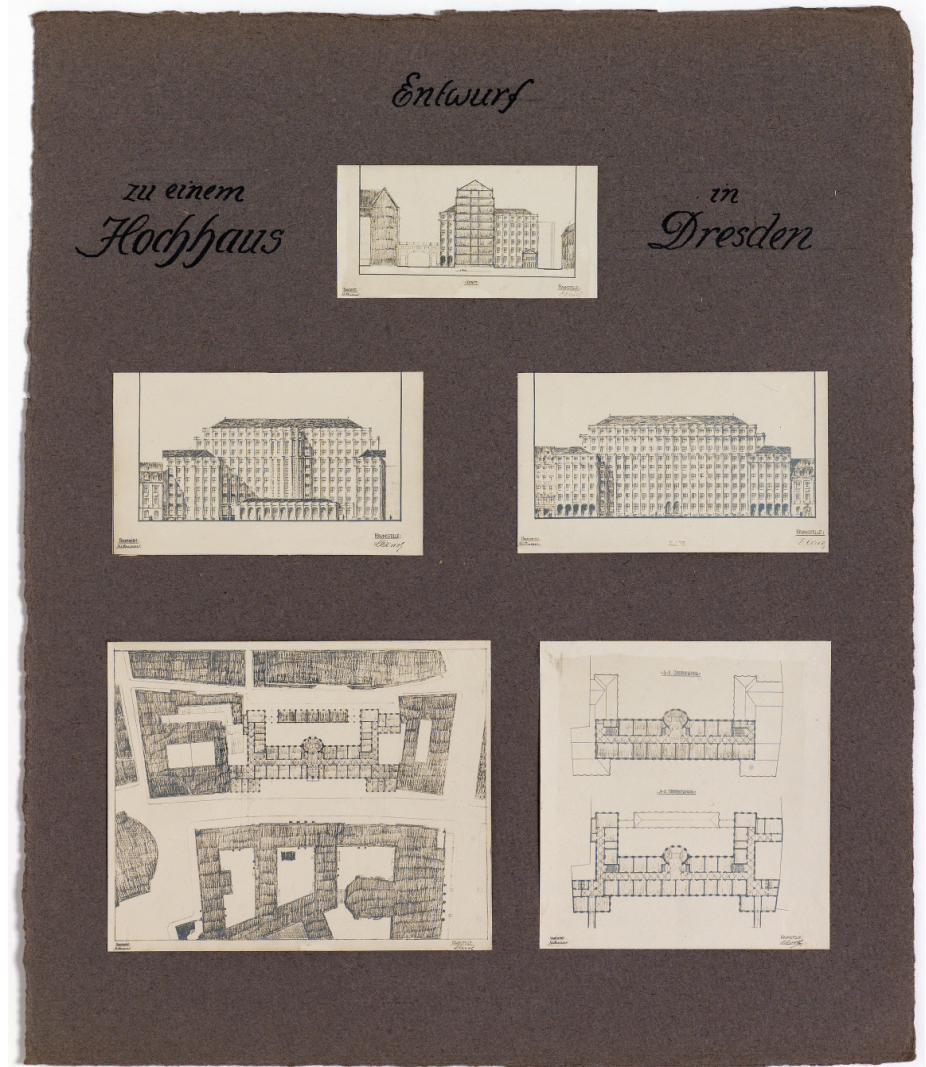


Fig. 9 Project (• XVI) – Design of a high-rise building (mount 410 × 350 mm)

XVI

circa 1928?: Project for a Hochhaus, Dresden

Project for a nine-storey building. The drawings seem unrelated to Wirth’s known projects for similar buildings executed circa 1922³⁶ and 1925;³⁷ they may relate to the ‘Hochhaus’ on the Albertplatz for the Sächsische Staatsbank (built in 1929, by Hermann Paulick).

- brown card mount (410 × 350 mm, verso ink-stamped *Paul Fischer Hofphotograph Breslau*), lettered *Entwurf zu einem Hochhaus in Dresden*, with five positive photostat copies of drawings attached: (a) section (52 × 103 mm), (b) elevation (72 × 122 mm), (c) elevation (72 × 122 mm), (d) plan of site (120 × 150 mm), (e) two plans lettered *1.–5. Obergeschoss* and *6.–8. Obergeschoss* (118 × 114 mm), each captioned *Bearbeitet: Mittmann | Raumstelle: L Wirth. Fig. 9*

XVII

undated: Project for a Gross-Markthalle, Friedrichstadt, Dresden

- grey card mount (350 × 390 mm, verso ink-stamped *Paul Fischer Hofphotograph Breslau*), lettered *Gross-Markthalle | Vorproject*, with three positive photostats of drawings attached: (a) plan of building site (bordered by Bremer-Straße Brücke, Walther Straße, Hamburger Straße), with the ‘Hafen’ coloured blue (115 × 128 mm), (b) elevation (*Ansicht*) and section (*Schnitt*), each captioned (left) *Der Rat zu Dresden*, (centre) *Gross-Markthalle*, (right) *Hochbauamt* and (beneath) *Entwurfsabteilung 3 | Bearbeitet | Ausgefertigt Dresden den [signature] L Wirth* (110 × 170 mm), (c) two elevations [signatures] *L Wirth* (110 × 170 mm) **Fig. 10**

XVIII

undated: Projects for detached suburban villas

a.

- sheet of tracing paper (303 × 200 mm), drawn plan executed in pencil, lettered *Zu beachten*

³⁶ Compare Wirth’s ‘Studie zu einem Hochhaus’ reproduced by Herbert Conert, ‘Dresdener Baukünstler’ in *Wasmuths Monatshefte für Baukunst und Städtebau* 7 (1922–1923), p.390.

³⁷ A competition was organised in 1925 to select designs for a new office for the *Dresdner Anzeiger* (not realised). Wirth’s entries (code-named ‘Blaues Dreieck’, ‘Blaue Raute’, ‘Im Geist der Gotik’) are reproduced by Will Grohmann, ‘Die Wettbewerb des “Dresdner Anzeiger” 1924–1926’ in *Wasmuths Monatshefte für Baukunst und Städtebau* 10 (1926), pp.249–279 (Wirth’s project p.277, Abb.65, 66, 70–71); see also GURATZSCH pl.17 (drawing) ‘Wettbewerbentwurf für das Anzeigerhaus in Dresden’, pl.18 (drawings) ‘Seitenansicht, vom Bismarckdenkmal aus gesehen’. See further on the 1925 competition, <http://www.das-neue-dresden.de/hochhaus-wettbewerb-1925.html>.

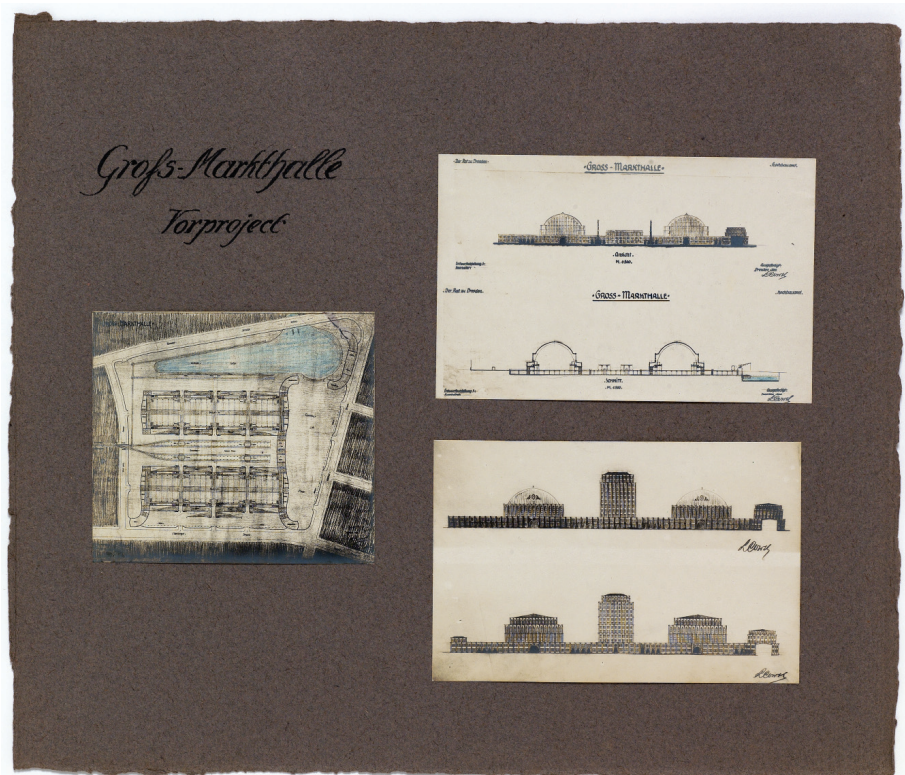


Fig. 10 Project (● XVII) – Hauptmarkthalle in Dresden-Friedrichstadt (mount 350 × 390 mm)

beim erwerb des Bauplatzes!, showing houses of 1350 sq. metres on plots of 45 × 30 m or 30 × 45 m, with scale *M. 1:1000* | 1 mm = 1 m, signed (lower right) *L Wirth*

b.

- sheet of tracing paper (310 × 202 mm), drawn elevation and section executed in pencil, numbered (upper right) *Pl. No. 081144*, lettered *Schnitt* and *Keller* with scale *M. 1:100. Fig. 11*

- sheet of tracing paper (310 × 200 mm), two drawn plans executed in pencil, numbered (upper right) *Pl. No. 091144*, and lettered *Erdgeschoss* and *I. Obergesch.* with compass rose and scale *M. 1:100. Fig. 11*

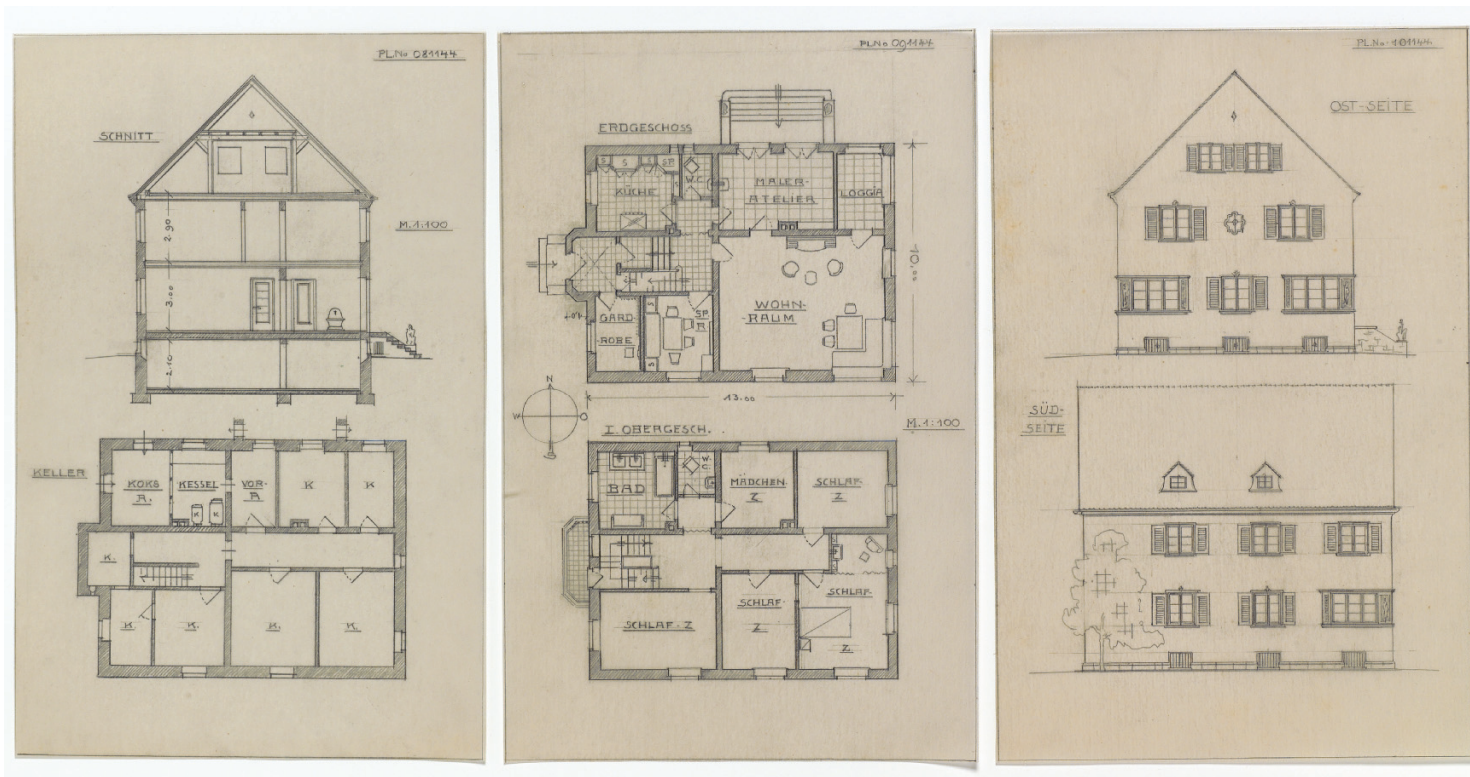


Fig. 11 Project (• XVIII) – Designs for villas (sheets 310 × 200/202 mm)

- sheet of tracing paper (310 × 200 mm), two drawn elevations executed in pencil, numbered (upper right) *Pl. No. 101144*, lettered *Ost-Seite* and *Süd-Seite*. **Fig. 11**

- sheet of tracing paper (310 × 200 mm), two drawn elevations executed in pencil, numbered (upper right) *Pl. No. 111144*, lettered *West-Seite* and *Nord-Seite*

c.

- sheet of tracing paper (310 × 202 mm), drawn section and two elevations executed in pencil, numbered (upper right) *Pl. No. 221144*, lettered *Süd-Seite* (i.e. *Ost-Seite?*), *Schnitt*, and *Nord-Seite*, with scale *M. 1:100*, with caption *Bauherr: | Unternehmer: | Architekt:* (no names are added)

- sheet of tracing paper (312 × 212 mm), two drawn elevations executed in pencil, numbered (upper right) *Pl. No. 231144*, lettered *Süd-Seite* and *West-Seite*, with scale *M. 1:100*, and same caption

- sheet of tracing paper (312 × 210 mm), two drawn plans executed in pencil, numbered (upper right) *Pl. No. 241144*, lettered *Erdgeschoss* and *I. Obergeschoss*, with scale *M. 1:100*, compass rose, and same caption

- sheet of tracing paper (312 × 210 mm), two drawn sections and a plan executed in pencil, numbered (upper right) *Pl. No. 291144*, lettered *Schnitt*, *Schnitt durch die Diele*, and *Keller*, with scale *M. 1:100*, and same caption