

A superb collection of silver gelatin photographs
of the Antarctic by Herbert Ponting, taken on the
Terra Nova Expedition, 1910-1913.

When we think of Captain Scott and his fateful last journey to the Antarctic, it is inevitable that we see him, his crew, and the continent itself, through the eyes of Herbert Ponting, the official photographer to the expedition. Many of Ponting's expedition photographs transcend the field of exploration and have become amongst the most iconic and valuable images of twentieth-century photography. This is especially true of the remarkable blue carbon prints developed by Ponting himself and which formed the basis for his exhibition at the Fine Art Society in 1913. Ponting did, however, take some 1700 photographs, many of which are not at all well known, and which give an intimate portrayal of life in the hostile Antarctic environment.

After Ponting's death in 1935, his negatives were acquired by Paul Popper who took prints from them using the silver gelatin process. These prints were essentially handmade and sometimes have little human touches, a fingerprint here where the photograph was handled, some rippling where the image was not dried properly, and have a depth and patina which modern reproductions lack. It's also worth noting that Ponting made albums for his own personal use consisting of silver gelatin contact prints so we can be certain that the medium is appropriate for the images. It is difficult however to date exactly when the photographs were developed, but it seems most likely to have been in the 1930's.

The *Terra Nova* expedition was supposed to be the high-water mark of the Golden Age of Antarctic exploration; led by Captain Robert Falcon Scott, the expedition was intended to be the first to reach the South Pole, and to mark the event with the planting of the Union Jack. However, the more professionally equipped Norwegian expedition led by Roald Amundsen got there first. Nevertheless this expedition will always be the one best remembered on account of the tremendous courage and bravery shown by Scott and his companions, Wilson, Bowers, Oates, and Evans on their return from the Pole in appalling conditions - perhaps best exemplified by Lawrence 'Titus' Oates who walked from the tent into a blizzard whilst suffering from frostbite and gangrene, knowing that he was not going to survive the journey but hoping that his self-sacrifice might help the others survive.



1. PONTING, HERBERT.

Cinematographing in the ice pack.

£750 [ref: 108777]

Ponting using his cinematograph camera to record the Terra Nova breaking through the ice pack.

'Among the most remarkable of the Cinematograph Films secured was a scene showing the bow of the Terra Nova breaking through the ice pack. The method by which this record was made is here shown. Mr. Ponting was slung over the side of the ship on a plank, supported by a rope from the yard arm. This enabled him to focus his camera on the bow breaking the ice.' (Fine Art Society Catalogue).

Silver gelatin print, mounted, framed and glazed, captioned below image on mount. Image size: 214 x 289 mm; framed: 282 x 349 mm.

The Fine Art Society's exhibition of Ponting's photographs of The British Antarctic Expedition, 10.

2. PONTING, HERBERT.

Ponting and the 'Terra Nova'.

£750 [ref: 108797]

Ponting photographing the Terra Nova in the Antarctic ice pack in December 1910. The ship, which was constructed in 1884 and which spent ten years as part of the Labrador Sea seal fishery, was trapped for 20 days in the pack ice from 10-30 December 1910, before reaching her destination on 4 January 1911.

Silver gelatin print, mounted, framed and glazed, captioned below image on mount. Image size: 288 x 214 mm; framed: 355 x 277 mm.

3. PONTING, HERBERT.

Furling sails of the 'Terra Nova' in the pack ice.

£750 [ref: 108794]

Silver gelatin print, mounted, framed and glazed, captioned below image on mount. Image size: 214 x 288 mm; framed: 281 x 349 mm.







4. PONTING, HERBERT.

The Dogs on Deck. On board the 'Terra Nova'.

£750 [ref: 108788]

Showing the expedition dogs on board the Terra Nova.

'The Expedition had thirty dogs, which were berthed on deck. They were Eastern Siberians (not Eskimo, nor Samoyede) and were selected, bought and brought from their native land, safely to the Antarctic, by Mr. Cecil H. Meares, who was in charge of the dog teams, and instructed the members in driving them. The decks are completely covered with stores and material for building the Winter Quarters hut. Mr. Meares is seen in this view.' (Fine Art Society Catalogue).

Silver gelatin print, mounted, framed and glazed, captioned below image on mount. Image size: 214 x 287 mm; framed: 281 x 349 mm.

The Fine Art Society's exhibition of Ponting's photographs of The British Antarctic Expedition, 14.



5. PONTING, HERBERT.

Frostbite.

£650 [ref: 108771]

Depicting a close up of Dr Atkinson's frostbitten hand.

Silver gelatin print, mounted, framed and glazed, captioned below image on mount. Image size: 191 x 240 mm; framed: 255 x 301 mm.



6. PONTING, HERBERT.

Lt. Evans washing his hands.

£650 [ref: 108789]

Showing Lieut. Evans crouching down on his haunches washing his hands in the Antarctic sea. Evans, who rose to the rank of Admiral and who was raised to the Peerage as the first Baron Mountevans, served on the crew of the relief ship on the Discovery expedition and was planning his own Antarctic expedition when Scott offered him the post of second-in-command of the Terra Nova expedition.

Silver gelatin print, mounted, framed and glazed, captioned below image on mount. Image size: 288 x 213 mm; framed: 355 x 279 mm.

7. PONTING, HERBERT.

The Terra Nova at the Ice Foot. Cape Evans.

£750 [ref: 108782]

One of the most famous images from the Antarctic. 'The Terra Nova is moored to the sea-ice off Cape Evans, where she landed all her stores. In the foreground a floating iceberg appears to threaten her with momentary destruction, but the ship is really some distance away.' (Fine Art Society Catalogue).

Silver gelatin print, window mounted, framed and glazed, captioned below image on mount. Image size: 355 x 277 mm; framed: 440 x 349 mm.

The Fine Art Society's exhibition of Ponting's photographs of The British Antarctic Expedition, 27.





8. PONTING, HERBERT.

Unloading the motor sledge that sank through the ice.

£750 [ref: 108773]

Classic Ponting photograph, taken on 8th January 1911, showing the first of the motor sledges to be offloaded - soon to sink to the bottom of the ocean.

‘Three motor sledges were taken South. One was lost by sinking through the sea-ice. The remaining two gave a great deal of trouble as they were continually breaking down. Thanks to Mr. Day’s skill, however, they were the means of transporting several tons of stores to the Great Ice Barrier, where they were abandoned.’ (Extract from Fine Art Society’s catalogue of Ponting’s photographs of the 1910-1918 British Antarctic Expedition).

Silver gelatin print, mounted, framed and glazed, captioned below image on mount. Image size: 215 x 288 mm; framed: 282 x 350 mm.

The Fine Art Society’s exhibition of Ponting’s photographs of The British Antarctic Expedition, 28.



9. PONTING, HERBERT.

Whisky for the pony that had to swim ashore.

£750 [ref: 108772]

Classic Ponting photograph, taken on 8th February 1911, showing four members of the expedition feeding whisky to a pony which had swum ashore from the Terra Nova, while a sled dog sits in the shadow. Several cases of whisky accompanied the men to Antarctica courtesy of Peter Dawson Ltd, along with champagne, port, liqueurs and beer.

Silver gelatin print, mounted, framed and glazed, captioned below image on mount. Image size: 215 x 288 mm; framed: 282 x 350 mm.



10. PONTING, HERBERT.

The 'Terra Nova' lying off the Barne Glacier.

£750 [ref: 108787]

Showing the Terra Nova adjacent to The Barne Glacier in Antarctica, which descends from Mount Erebus' western slopes and comes to a halt between Cape Barne and Cape Evans, where it creates a sheer ice wall.

Silver gelatin print, mounted, framed and glazed, captioned below image on mount. Image size: 212 x 248 mm; framed: 282 x 348 mm.



11. PONTING, HERBERT.

Davis - ships carpenter - building Cape Evans hut.

£650 [ref: 108765]

The expedition's shipwright and carpenter Francis Davies working on 'The Hut', which is today the largest historic structure in the Ross Sea area. It took nine days to construct at Cape Evans, however before being transported to Antarctica, a trial erection of the prefabricated structure was undertaken in Lyttelton, New Zealand. Once finished, 25 members of the expedition lived there, cheek by jowl. Photo taken 10th January, 1911. Scott described the hut's feeling of comfort: 'The word hut is misleading. Our residence is really a house of considerable size, in every respect the finest that has ever been erected in the polar regions; 50ft long by 25 wide and 9ft to the eaves' (Antarctic Heritage Trust).

Silver gelatin print, mounted, framed and glazed, captioned below image on mount. Image size: 214 x 289 mm; framed: 281 x 349 mm.



12. PONTING, HERBERT.

Simpson and the Magnetic hut.

£750 [ref: 108767]

Meteorologist George Simpson (1878-1965) outside the Magnetic hut where he spent most of his time. A 'first-class scientist', according to Cherry-Garrard, 'Sunny Jim', as he was known, installed and maintained the most sophisticated scientific instruments that had been taken to Antarctica at that time, producing reports which met with wide acclaim. He became Director of the Met Office in 1920, retiring in 1938, having been knighted in 1935.

Silver gelatin print, mounted, framed and glazed, captioned below image on mount. Image size: 212 x 289 mm; framed: 349 x 281 mm.



13. PONTING, HERBERT.

Clissold making bread.

£750 [ref: 108774]

The expedition's chef Thomas Clissold making bread for the team, prominently featuring rations provided by Griffiths McAlister and Co. Ponting recorded this image as having been shot on March 26th, 1911.

Silver gelatin print, mounted, framed and glazed, captioned below image on mount. Image size: 213 x 288 mm; framed: 282 x 348 mm.



14. PONTING, HERBERT.

Oates in the stable.

£650 [ref: 108800]

Showing Capt. Oates with the Manchurian ponies, which had been purchased by Meares, a canine rather than an equine expert.

Oates considered the ponies unfit for purpose, and insufficiently provisioned for and so he bought two extra tons of fodder with his own money to feed them, however two of the nineteen ponies were killed in a violent storm two days after the Terra Nova left New Zealand.

Silver gelatin print, mounted, framed and glazed, captioned below image on mount. Image size: 211 x 287 mm; framed: 282 x 349 mm.



15. PONTING, HERBERT.

Bowers returned from Southern journey.

£750 [ref: 108766]

Lieut. Henry Robertson Bowers, known as 'Birdie', one of the members of Robert Falcon Scott's polar party who all perished on their way back from the South Pole. Scott was so impressed by Bowers' organisational skills on the voyage out that he promoted him to the shore party and put him in charge of landing, stores, navigation and sledging rations.

Silver gelatin print, mounted, framed and glazed, captioned below image on mount. Image size: 287 x 211 mm; framed: 355 x 279 mm.



16. PONTING, HERBERT.

Clissold, Anton and Emperor Penguin.

£750 [ref: 108779]

Expedition cook Thomas Clissold and Anton Omelchenko, groom to the ponies, holding an emperor penguin tied to a staff - no doubt destined for the pot.

Silver gelatin print, mounted, framed and glazed, captioned below image on mount. Image size: 188 x 237 mm; framed: 255 x 301 mm.



17. PONTING, HERBERT.

P.O. Evans sewing tent.

£750 [ref: 108786]

Showing Petty Officer Edgar Evans, who died on the return journey from the South Pole. He first served with Scott on HMS Majestic as torpedo lieutenant, and sailed with him on the Discovery expedition.

Silver gelatin print, mounted, framed and glazed, captioned below image on mount. Image size: 214 x 288 mm; framed: 281 x 348 mm.



18. PONTING, HERBERT.

Taylor, Debenham and Gran.

£750 [ref: 108790]

Showing T. Griffith 'Grif' Taylor, Frank Debenham, and Tryggve Gran in the 'opium den', so named as the paper lining the shelves (with the zigzag pattern) was bright red, and a thick curtain hung over the entrance to this part of the Hut. This section of the hut was home to the two geologists, and the Norwegian skier Gran.

Silver gelatin print, mounted, framed and glazed, captioned below image on mount. Image size: 214 x 289 mm; framed: 282 x 349 mm.



'I BELIEVE HE REALLY IS THE FINEST CHARACTER I EVER MET' (R.F. SCOTT)

19. PONTING, HERBERT.

Edward Wilson.

£750 [ref: 108805]

Edward Wilson, the expedition's Chief Scientist, working on one of the most famous images to come from the Antarctic. Wilson had been with Scott on the Discovery expedition, and was not only an accomplished artist but a qualified doctor, an ornithologist, and a natural historian. He died with Scott on the return from the South Pole.

Silver gelatin print, mounted, framed and glazed, captioned below image on mount. Image size: 390 x 275 mm; framed: 455 x 345 mm.



20. PONTING, HERBERT.

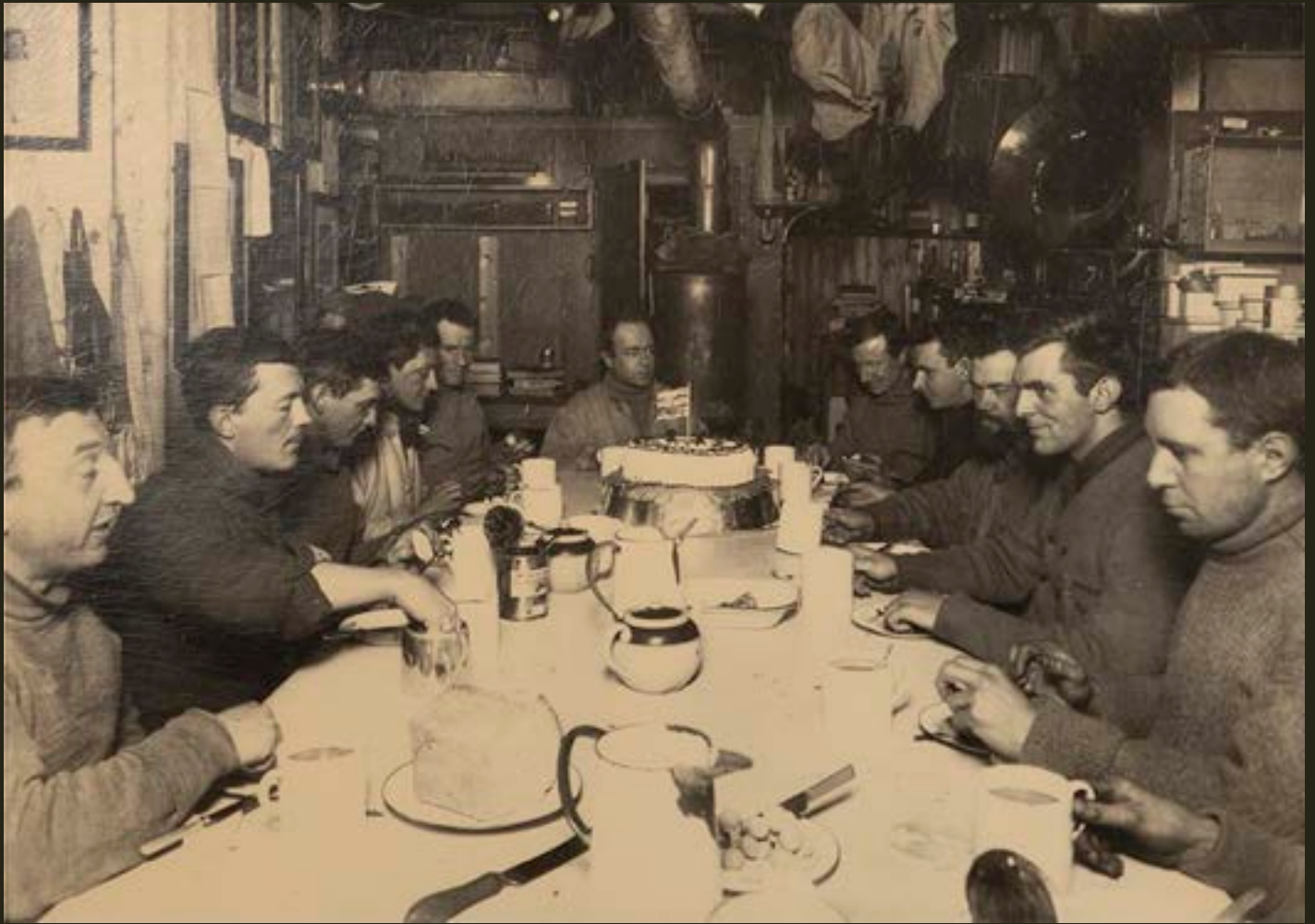
Wright taking transit at night.

£750 [ref: 108792]

'Mr. Wright, one of the physicists, made observation of the stars almost nightly, during the winter: he is working in a temperature of between 40° and 50° below zero.' (Fine Art Society).

Silver gelatin print, mounted, framed and glazed, captioned below image on mount. Image size: 214 x 289 mm; framed: 282 x 349 mm.

The Fine Art Society's exhibition of Ponting's photographs of The British Antarctic Expedition, 45.



'THE LEADER'S BIRTHDAY'

21. PONTING, HERBERT.

Captain Scott's last birthday dinner.

£750 [ref: 108810]

'The Leader's Birthday was the occasion of a festival in the hut, and the resources of the larder were drawn upon to the utmost, in honour of the occasion. It is perhaps needless to say that justice was done, not only by the cook but by the guests, to the ample delicacies which the stores were found to contain. The hut was decorated for this night with sledging flags. The portraits, from left to right are: Dr. Atkinson, Mr. Meares, Captain Oates standing, Mr. Cherry-Garrard, Mr. Taylor, Mr. Nelson, Commander Evans, Captain Scott in centre, Dr. Wilson, Dr. Simpson, Lieut. Bowers, Lieut. Gran standing, Mr. Wright, Mr. Debenham, Mr. Day. Mr. Ponting took the photograph, and therefore does not appear in it.' (Fine Art Society)

Silver gelatin print, mounted, framed and glazed, captioned below image on mount. Image size: 390 x 274 mm; framed: 455 x 343 mm.

The Fine Art Society's exhibition of Ponting's photographs of The British Antarctic Expedition, 51.



22. PONTING, HERBERT.

The Tenements.

£750 [ref: 108811]

'The name given to some of the Officers' bunks in the hut. The bunks are those of Mr. Cherry-Garrard, Lieut. Bowers, Capt. Oates, Mr. Meares and Dr. Atkinson. The occupants are seen in them' (Fine Art Society). Cherry-Garrard can be found bottom left looking at the camera, with 'Birdie' Bowers standing over him; Titus Oates is in the top centre bunk looking across to Cecil Meares who holds his pipe in his mouth, with 'Aitch' Atkinson below in the bottom right bunk.

Silver gelatin print, mounted, framed and glazed, captioned below image on mount. Image size: 392 x 273 mm; framed: 453 x 343 mm.

The Fine Art Society's exhibition of Ponting's photographs of The British Antarctic Expedition, 52.



23. PONTING, HERBERT.

Debenham grinding Geological specimens.

£750 [ref: 108783]

Frank Debenham, a geologist on the expedition, grinding geological specimens at the Hut at Cape Evans.

Silver gelatin print, mounted, framed and glazed, captioned below image on mount. Image size: 289 x 214 mm; framed: 355 x 278 mm.



24. PONTING, HERBERT.

Simpson in his laboratory.

£750 [ref: 108776]

George 'Sunny Jim' Simpson, the expedition's meteorologist, filling standard cells in his laboratory (known as Simpson's Corner) in the Hut at Cape Evans. He became Director of the Met Office in 1920, retiring in 1938, having been knighted in 1935.

Silver gelatin print, mounted, framed and glazed, captioned below image on mount. Image size: 214 x 289 mm; framed: 282 x 349 mm.

The Fine Art Society's exhibition of Ponting's photographs of The British Antarctic Expedition, 56.



25. PONTING, HERBERT.

Wilson, Bowers, Cherry-Garrard on their return from the 'Worst journey in the World'.

£750 [ref: 108801]

Taken on 1st August 1911, showing Dr Wilson, 'Birdie' Bowers and Apsley Cherry-Garrard having their first meal on their return from their winter journey to Cape Crozier: The Worst Journey in the World, the name Cherry-Garrard gave to his account of the expedition.

Silver gelatin print, mounted, framed and glazed, captioned below image on mount. Image size: 212 x 287 mm; framed: 282 x 349 mm.



26. PONTING, HERBERT.

Mount Erebus.

£750 [ref: 108803]

'The volcano is shown, in this study, with a long streamer of smoke issuing from the crater, and trailing across the sky to the horizon.' (Fine Art Society catalogue).

Silver gelatin print, mounted, framed and glazed, captioned below image on mount. Image size: 270 x 388 mm; framed: 455 x 343 mm.

The Fine Art Society's exhibition of Ponting's photographs of The British Antarctic Expedition, 82.



27. PONTING, HERBERT.

Shackleton's hut at Cape Royds. Nelson, Day, Lashly.

£750 [ref: 108804]

Biologist Edward Nelson, Bernard Day (who was Shackleton's former motor specialist), and Head Stoker William Lashly who had served in the same role on the Discovery expedition.

Silver gelatin print, mounted, framed and glazed, captioned below image on mount. Image size: 390 x 275 mm; framed: 465 x 345 mm.



28. PONTING, HERBERT.

Ponting with his camera sledge.

£750 [ref: 108791]

Ponting was one of the first people to utilise a handheld cine camera in Antarctica. The two machines, known as a cinematographs, which he took with him were rudimentary, and could only capture brief film sequences, however during his time in the Antarctic Ponting recorded roughly 25,000 feet of film. In addition, Ponting captured some of the first known colour still images in Antarctica using autochrome plates. He is joined in the photograph by two sledge dogs acquired by Mearns for the expedition.

Silver gelatin print, mounted, framed and glazed, captioned below image on mount. Image size: 214 x 288 mm; framed: 281 x 347 mm.



29. PONTING, HERBERT.

Scott at his desk - Cape Evans.

£750 [ref: 108802]

Taken on 7th October 1911, this is one of the most famous images shot by Ponting during his time in the Antarctic as part of Captain Scott's Terra Nova expedition (1910-1913). Capt. Scott sits cross-legged on the side of his bed writing in his journal at a table with his clothes and books behind him, and his leather suitcase under the bed. Scott described the hut's feeling of comfort: 'The word hut is misleading. Our residence is really a house of considerable size, in every respect the finest that has ever been erected in the polar regions; 50ft long by 25 wide and 9ft to the eaves' (Antarctic Heritage Trust).

Silver gelatin print, mounted, framed and glazed, captioned below image on mount. Image size: 390 x 275 mm; framed: 465 x 345 mm.



30. PONTING, HERBERT.

Lt. Evans.

£750 [ref: 108778]

Lieut. Edward Evans, later Admiral and 1st Baron Mountevans, standing next to one of the sledging theodolites. Evans served on the crew of the relief ship on the Discovery expedition and was planning his own Antarctic expedition when Scott offered him the post of second-in-command of the Terra Nova expedition. Photograph taken in October 1911.

Silver gelatin print, mounted, framed and glazed, captioned below image on mount. Image size: 214 x 288 mm; framed: 282 x 350 mm.



THE HUT AT CAPE EVANS

31. PONTING, HERBERT.

Cape Evans.

£750 [ref: 108798]

The hut at Cape Evans, surrounded by supplies with five members of the crew in the middle ground and Capt Scott smoking his pipe by the hut itself.

Silver gelatin print, mounted, framed and glazed, captioned below image on mount. Image size: 198 x 286 mm; framed: 281 x 351 mm.



32. PONTING, HERBERT.

Whole Team Photograph.

£750 [ref: 108806]

The Shore Party, except for Clissold and Ponting.

Silver gelatin print, mounted, framed and glazed, captioned below image on mount. Image size: 390 x 273 mm; framed: 453 x 345 mm.

33. PONTING, HERBERT.

Gran.

£750 [ref: 108770]

'Lt. Trygve Gran, one of the most expert ski runners of Norway, accompanied the expedition to instruct the members in the use of ski.' (Extract from Fine Art Society's catalogue). Gran was recommended to Scott by none other than Fridtjof Nansen, and was part of the search party that found the tent containing the bodies of Scott, Wilson and Bowers.

Silver gelatin print, mounted, framed and glazed, captioned below image on mount. Image size: 240 x 189 mm; framed: 308 x 253 mm.





34. PONTING, HERBERT.

The Gas Plant.

£750 [ref: 108796]

The gas plant where acetylene gas was produced for lighting in the dark winter months. A generator used water dripping onto calcium carbide to generate the gas which was then piped through the hut to various lamp fittings. As can be seen from the photograph the generators were well insulated to prevent the water from freezing.

Silver gelatin print, mounted, framed and glazed, captioned below image on mount. Image size: 214 x 189 mm; framed: 308 x 251 mm.



35. PONTING, HERBERT.

Dyne's Anemometer.

£750 [ref: 108795]

Dyne's anemometer in the meteorologist George Simpson's laboratory in The Hut at Cape Evans.

Silver gelatin print, mounted, framed and glazed, captioned below image on mount. Image size: 240 x 189 mm; framed: 308 x 251 mm.



36. PONTING, HERBERT.

Day and Lashly with motor sledge.

£750 [ref: 108793]

Bernard Day, who was in charge of the motor sledges, with William Lashly, an Antarctic veteran, who served as Chief Stoker on both the Discovery and Terra Nova expeditions. Photograph taken in November 1911.

Scott originally chose a light-weight French-designed motor sledge which he tested in the Alps, but this was abandoned for a sledge designed by Major B.T. Hamilton, built in Britain and tested in Norway. The weight of these sledges was a problem, and the first to be offloaded from the Terra Nova fell through the ice and sank to the ocean floor. The other two started well, but failed to master the terrain or the climate and were soon abandoned, Scott writing 'So the dream of great help from the machines is at an end!'

Silver gelatin print, mounted, framed and glazed, captioned below image on mount. Image size: 214 x 287 mm; framed: 281 x 349 mm.



37. PONTING, HERBERT.

Clissold making pies.

£750 [ref: 108799]

The expedition's chef Thomas Clissold making rhubarb pies for the team, prominently featuring ration tins provided by Frank Cooper.

Silver gelatin print, mounted, framed and glazed, captioned below image on mount. Image size: 214 x 287 mm; framed: 282 x 348 mm.



38. PONTING, HERBERT.

Stareek.

£650 [ref: 108769]

Showing the husky named Stareek, one of the members of the dog sledging team, resting.

Silver gelatin print, mounted, framed and glazed, captioned below image on mount. Image size: 189 x 230 mm; framed: 255 x 301 mm.



39. PONTING, HERBERT.

Packing sugar for sledging rations.

£750 [ref: 108775]

Cecil Meares and Thomas Clissold the cook, packing sugar for sledging rations, with six wooden boxes stamped Henry Tate and Sons 'cube sugar' in the foreground of the shot. The daily rations, which were soon found to be insufficient to offset the energy used in hauling sledges in the Antarctic cold consisted of: 340g pemmican, 450g biscuit, 57g butter, 20g tea, 85g sugar, and 16g cocoa.

Silver gelatin print, mounted, framed and glazed, captioned below image on mount. Image size: 215 x 290 mm; framed: 282 x 349 mm.



40. PONTING, HERBERT.

Meares and the Pianola.

£750 [ref: 108785]

Cecil Meares sitting at the pianola. Meares, who was in charge of the dog teams on the expedition, had a varied background having worked in the Siberian fur trade, taken part in the Brooke expedition to Tibet, and had been in Peking during the Boxer Rebellion.

Silver gelatin print, mounted, framed and glazed, captioned below image on mount. Image size: 214 x 289 mm; framed: 282 x 349 mm.



41. PONTING, HERBERT.

Anton cutting Keohane's hair.

£750 [ref: 108784]

The Ukrainian groom Anton Omelchenko, cutting the hair of Patrick Keohane (1879-1950).

Silver gelatin print, mounted, framed and glazed, captioned below image on mount. Image size: 282 x 214 mm; framed: 355 x 277 mm.



42. PONTING, HERBERT.

Finnesko with Crampons.

£750 [ref: 108768]

A pair of finnesko (boots made by the Sami people of reindeer hide), which due to the soft nature of the hide will not freeze solid as boot leather would do in the Antarctic temperatures.

'No furs were worn on this expedition, as they are very heavy, and as time goes on become more and more so from the ice which collects in them. Two suits of thick woollen underwear, covered with a thin wind-proof gabardine material were found to be sufficient to keep out the most intense cold. A helmet of the same material, with a shield to keep the side wind off the face, and a woollen helmet under it, kept the head warm. Finnesko, or Reindeer-skin boots, with three or four pairs of thick woollen socks inside them, served for the feet.' (Extract from Fine Art Society's catalogue of Ponting's photographs of the 1910-1918 British Antarctic Expedition).

Silver gelatin print, mounted, framed and glazed, captioned below image on mount. Image size: 188 x 239 mm; framed: 256 x 302 mm.



'TO STRIVE, TO SEEK, TO FIND, AND NOT TO YIELD'

43. PONTING, HERBERT.

Memorial Cross to Scott, Wilson, Bowers, Oates and Evans. Observation Hill, Ross Island, Antarctica.

£650 [ref: 108780]

The cross erected as a memorial to Scott, Wilson, Bowers, Oates and (Edgar) Evans who lost their lives returning from the South Pole.

Silver gelatin print, mounted, framed and glazed, captioned below image on mount. Image size: 379 x 248 mm; framed: 475 x 335 mm.



1



2



3



4



5



6



7



8



9



10



11



12



13



14



15



16



17



18



19



20



21



22



23



24



25



26



27



28



29



30



31



32



33



34



35



36



37



38



39



40



41



42



43

ANTARCTIC EXPLORATION

ARCTIC EXPLORATION

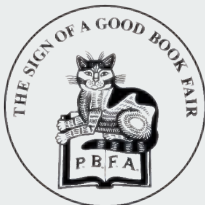
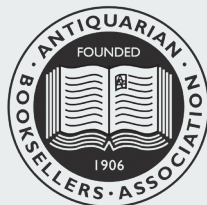
VINTAGE PHOTOGRAPHY



SHAPERO RARE BOOKS

105-106 New Bond Street
London W1S 1DN
+44 (0)20 7493 0876
rarebooks@shapero.com
www.shapero.com

A member of the Scholium Group



TERMS AND CONDITIONS

The conditions of all books has been described.

All items in this catalogue are guaranteed to be complete unless otherwise stated.

All prices are nett and do not include postage and packing.

Invoices will be rendered in GBP (£) sterling.

The title of goods does not pass to the purchaser until the invoice is paid in full.

VAT Number GB 105 103 675

NB: The illustrations are not equally scaled.

Catalogued by Julian MacKenzie

Edited by Jeffrey Kerr

Photography by Natasha Marshall

Design by Roddy Newlands



GUARANTEED
AUTHENTICITY



INTERNATIONAL
DELIVERY



MEET OUR
BOOKSELLERS



FREE GIFT
WRAPPING